



Share India
You generate, we multiply

SHARE INDIA
SECURITIES LTD

Investor Presentation Q2 & H1 FY26

Q2 FY26 - Consolidated Performance Highlights



Q2FY26



₹ 341 Cr

REVENUE
0% QoQ



₹ 164 Cr

EBITDA
16 % QoQ



48%

EBITDA MARGIN
679 bps



₹ 93 Cr

NET PROFIT
10 % QoQ



27%

NET PROFIT MARGIN
263 bps



₹ 4.25

BASIC EPS
10 % QoQ

Q2 FY26 – Operational Highlights



- A total of 7 DRHPs were filed in H1 FY26
- The filings include 1 Main-Board IPO and 6 SME IPOs
- The trend highlights sustained investor confidence and market readiness for new listings



- The Company has made an additional investment of **₹49.99 crore** in its wholly owned subsidiary, **Share India Fincap Private Limited (SIFPL)**.
- This strategic allocation is aimed at ensuring SIFPL has adequate funding for its ongoing development, ultimately contributing to the growth of the overall group.



- Board approved the incorporation of a new subsidiary, 'Share India Greyhill Private Limited,' or such other name as the ROC may approve, with an investment of up to Rs. 6 crore in its equity shares
- The subsidiary aims to develop India's technology-driven fixed income and investment distribution platform



- **Approved raising of funds by way of issue of Foreign Currency Convertible Bonds ("FCCBs")** up to an aggregate amount of USD 50 Million (Fifty Million US Dollars) on private placement basis, subject to the approvals of the shareholders of the Company and regulatory authorities, as may be necessary.



Company

Overview

Share India – At a Glance



Share India Securities Ltd. Was founded in 1994 and is headquartered at Noida, Uttar Pradesh, India.



It is a prominent, technology-driven financial services company in India, renowned for its expertise in algorithmic trading and a broad spectrum of investment solutions.



Stands as a diversified financial conglomerate with a strong emphasis on technology and innovation.



With a network of 275 branches and franchises across 16 states, Share India has established a strong footprint across India, providing accessible financial services to a broad clientele



30+
Years of Trust



11
Subsidiaries



4,201
Employees



200+
In house tech experts



₹ 2,509 Cr
Net worth (H1 FY26)



275
Branches & Franchises



48.2%
Q2 FY26 EBITDA Margin (%)

Growing Financial Services Conglomerate



Standalone Business



Broking in Equity, F&O,
Commodities and Currency segment



Prop Trading



Mutual Funds distribution



Research



Depository Participant



Institutional Business

Business in Subsidiaries



Equity Trading



Insurance Broking



NBFC



Investment banking



Algo Trading platform

Entities

Share India Algoplus Pvt. Ltd.
Share India Global Pte Ltd.
Share India Securities (IFSC) Pvt. Ltd.
Total Securities (IFSC) Pvt. Ltd.

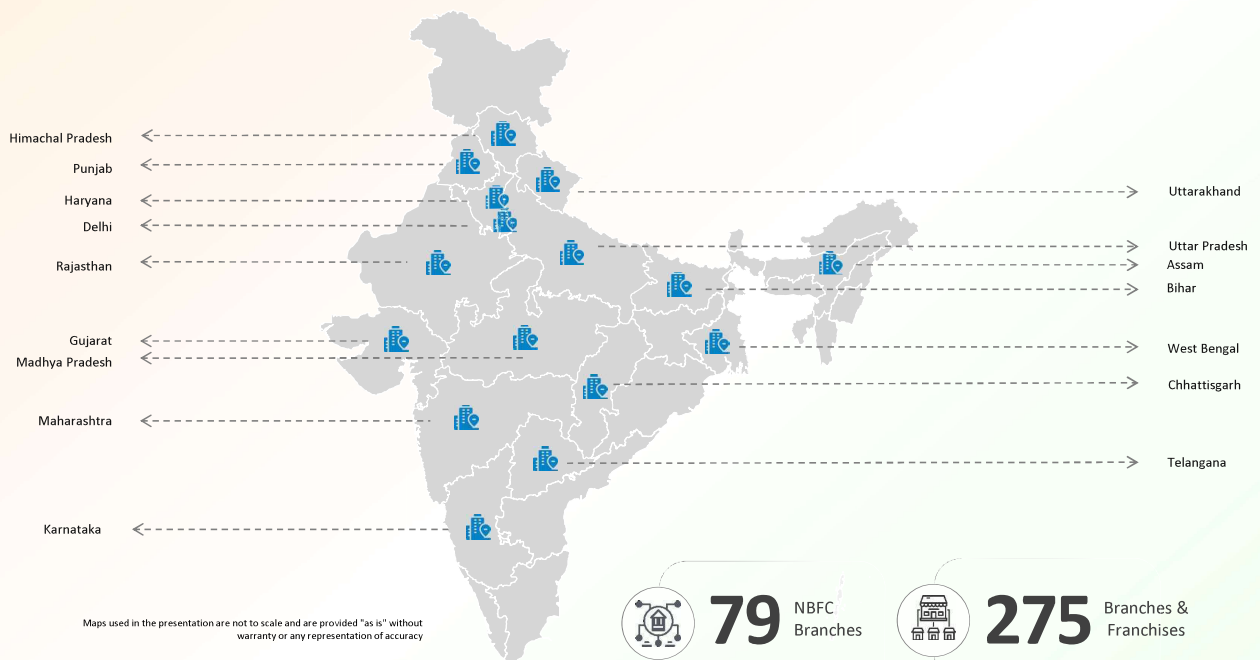
Share India Insurance
Brokers Pvt. Ltd.

Share India Fincap Pvt. Ltd.

Share India Capital
Services Pvt. Ltd.

Algowire Trading Technologies Pvt. Ltd.
uTrade Solutions Pvt. Ltd.
Silverleaf Securities Research Pvt Ltd

Pan India Presence



79 NBFC Branches



275 Branches & Franchises

A blue-tinted background image showing two hands shaking in a firm grip, symbolizing a business deal or partnership. In the background, a city skyline is visible. Overlaid on the image is a white line graph with an upward-pointing arrow and a bar chart, representing business growth.

Business

Overview



Broking and Trading segment

- Brokerage is charged on turnover.
- 0.01-0.05% is the range of the brokerage which is charged to the customers.
- According to McKinsey & Company and BoF, the world's fastest growth in ultra-high-net-worth individuals (UHNIs) will be witnessed by India, with their population projected to surge 50% between 2023 and 2028.
- According to Knight Frank's 'The Wealth Report 2025', India's HNWI population is estimated at 85,698 in 2024, up from 80,686 in the previous year, and is expected to rise to 93,753 by 2028, reflecting the country's expanding wealth landscape.



46,549
No. of Clients



₹ 7,500 Cr
Avg. Daily Turnover



₹ 443 Cr
Margin Trading Facility (MTF)

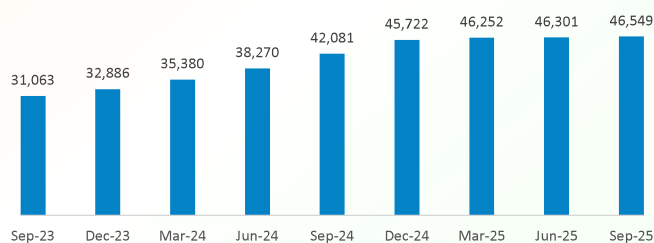


171
Initiated Coverage
Report Till now



154
Institutional clients

No of Clients in Broking



Sources: Economic times, DBS treasures



NBFC and Merchant Banking



NBFC

43,770
NBFC Client Base

4.78%
GNPA

79
NBFC Branches

3.03%
NNPA

₹ 253 Cr
NBFC Loan Book

4.24%
NIM*



Merchant Banking

21
IPO Listings
Till now

DRHP Filed for Main Board IPO

1
H1 FY26

13
Sectors Serviced

DRHP Filed for SME IPO

6
H1 FY26

7
Geographies Serviced

Successful Listing

3
H1 FY26



*Not Annualised

Insurance and Mutual Funds



Mutual Funds

₹ 197 Cr
AUM

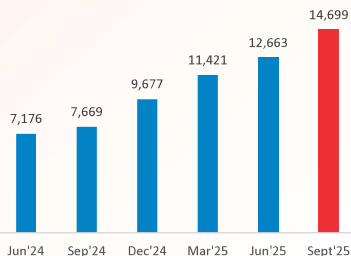
40
Distributorship

14,699
Active MF Customers

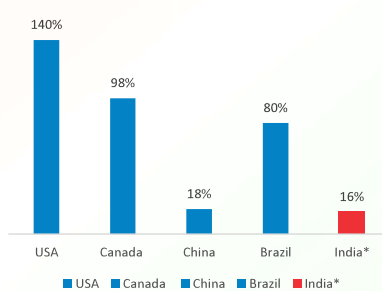


- India's MF penetration remains low compared to developed economies, despite rapid growth in SIPs and digital adoption.
- India's MF AUM-to-GDP ratio has reached an all-time high of 19.9% of GDP as of March 2025.
- The Indian market has **huge growth potential**, especially in **Tier 2-4 cities**, with increasing financial awareness and fintech push.
- Regulatory support** (SEBI, AMFI) and campaigns like *Mutual Funds Sahi Hai* are aiding this expansion.

Share India Active MF customers



2020 AUM/GDP Ratio (%)



Source: IRDAI, World Bank & economic survey, The Global Economy, AMFI, Business Standard, Economic times,

Insurance

3,661

No. Policies Sold in H1 FY26

₹ 26 Cr

Premium collected in H1 FY26

91,043

Total Lives Covered

15

Type of Insurance



- Global Average*: ~7%
- India ranks well below global average, highlighting the **immense growth potential**, especially in rural and underserved regions.

Segment (India)	FY24 Penetration* (% of GDP)
Life Insurance	~2.8%
Non-Life Insurance	~1.0%
Total	~3.8%

(*Insurance penetration = Total premiums as % of GDP)

Source: AMFI (Association of Mutual Funds in India)

Reliable Trading Platform



Adaptable Trading Tools to Match Your Every Move.

Rest API:

-REST based Trading API. Our REST API's will help you to develop your own trading, Using our REST API you can execute orders in real time, monitor your positions, manage your portfolio and much more.

Company Analytics:

-Users can easily access a company's fundamentals on our trading platform, including technical analysis, peer comparison, events, key statistics, and factor analysis—all in one place without any hassle.

AI Screener & AI Overview:

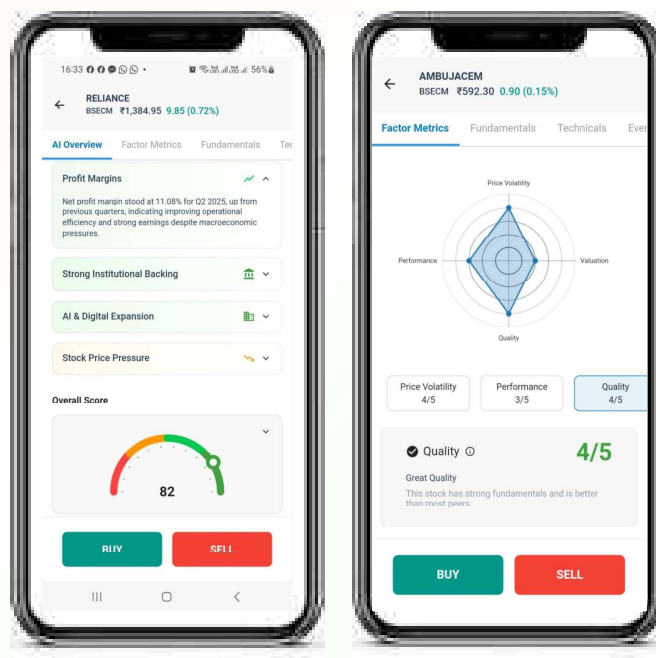
-AI-driven engine providing instant stock screening and predictive insights using real-time fundamentals and technical data.

SIP (Systematic Investment Plan)

-Automated periodic investment system for disciplined investing and portfolio growth tracking.

GTT Order (Good Till Triggered)

-Trigger-based order system that executes trades automatically once preset market conditions are met.



UTrade – Algo: Algo Trading that is modern, reliable and effortless



Unlock Your Trading Potential: Discover uTrade Algos Unique Offerings

Evolving Strategy Library – Shifting Master (BNF, NF & Sensex):

- Introduced new strategies that adapt to changing market dynamics, reinforcing our commitment to innovation and responsiveness.

Market Watch & Charts:

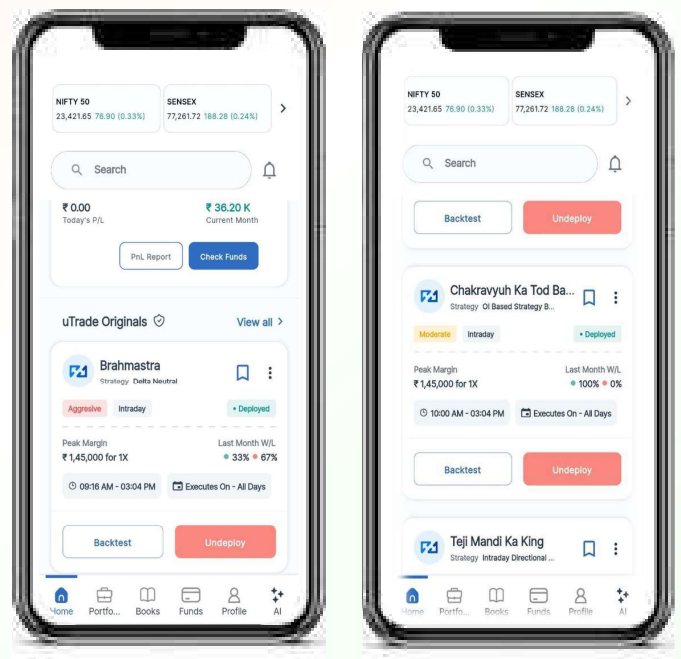
- Provide real-time price tracking and dynamic visual analysis to help traders make quick, informed decisions.

uTrade Intelligence:

- Delivers data-driven insights and analytics to optimize strategy performance and enhance trading decisions.

New Indicators (Bollinger Bands, WAP, ATR):

- Enhance trading precision by analyzing volatility, price trends, and volume-weighted market movements.



Awareness Events This Quarter



Event: Algorithm 2.0

Date: 27th July

Location: Rajkot

A tech-driven event showcasing algorithmic trading innovations



Event: Wealth Expo 2025

Date: 9th & 10th August

Location: Bengaluru

A networking platform for wealth managers, investors, and advisors.



Event: Finbridge Event 2025

Date: 20th & 21st September

Location: Ahmedabad

India's leading financial technology and investment expo.

A background image of a chessboard with various chess pieces, overlaid with a solid blue rectangle. The pieces are slightly out of focus, and the blue overlay is semi-transparent, allowing the chessboard pattern to be visible underneath.

Strategic

Overview

Mapping Our Path Ahead



Retail Expansion

- Focus on **Margin Trading Facility (MTF)** Book which will augur well in enhanced client retention thus aiding revenues with increased trading volumes
- Spreading the wings of our **Algo platforms** to reach maximum retail clients via **Utrade Algo**.
- Providing **Portfolio management services (PMS)** and enhancing the presence in Wealth management
- Increasing Digital presence and establishing a Phygital Broking Firm.
- Continue Strengthening technological investment to roll out more tech-based retail solutions and innovative products.



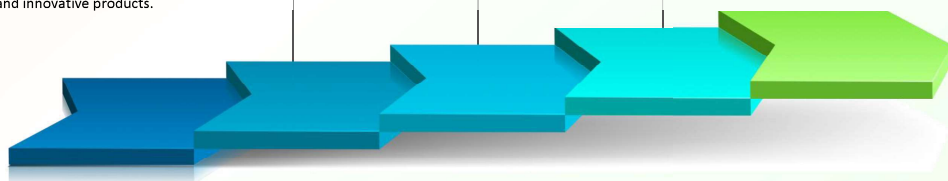
Institutional Clients

- Increasing Client Base
- Focus on High Frequency Trading (HFT) Players
- Leveraging Technology



Diversification

- Offerings in Merchant Banking
- Loan Against Property, Security and Mutual Funds in NBFC
- Harnessing Tech expertise to create inroads into global markets
- Growing focus on Insurance Broking



A blue horizontal band featuring a faint background image of financial data. It includes a line graph with peaks and valleys, and several stacks of silver coins. The word "Financial" is overlaid in large white letters.

Financial

Overview



Q2 & H1 FY26 Consolidated Results Highlights

P&L (Rs Cr)	Q2 FY26	Q2 FY25	Y-O-Y	Q1 FY26	Q-O-Q	H1 FY26	H1 FY25	Y-O-Y
Interest Income	68	55		61		129	105	
Fees & Commission	50	55		40		90	114	
Net Gain/Loss on FV Changes	207	275		218		425	539	
Dividend Income	7	12		4		11	16	
Sale of Products	6	53		17		23	89	
Sale of Services	2	2		3		5	5	
Total Revenue from Operations	341	453	-25%	341	0%	682	867	-21%
COGS	6	54		16		23	90	
Staff Cost	74	96		84		158	197	
Fees and commission expense	10	7		6		16	17	
Operating expenses	69	89		76		145	195	
Other expenses	23	20		21		43	34	
Total Expenses	182	266	-32%	203	-11%	385	534	-28%
Operating Profit	159	186		138		297	333	
Other Income	5	4		3		8	10	
EBITDA	164	190	-13%	141	16%	306	344	-11%
EBITDA Margin	48%	42%		41%		45%	40%	
Depreciation and Amortisation	4	4		4		8	8	
EBIT	160	186	-14%	137	17%	298	336	-11%
Finance costs	34	22		27		60	40	
PBT	126	164	-23%	111	14%	237	296	-20%
Exceptional Items	0	0		0		0	0	
Tax	33	40		26		60	68	
PAT	93	124	-25%	84	10%	178	227	-22%
PAT Margin	27%	27%		25%		26%	26%	
Basic EPS	4.25	6.03		3.86		8.10	11.21	

#EPS are not annualised for the quarters.

Balance Sheet



Particulars (In ₹ Cr)	H1 FY26	FY25
Liabilities		
Financial Liabilities		
Trade and Other Payables	527.7	413.3
Borrowings	424.2	483.3
Other Financial Liabilities	811.8	509.2
Non-Financial Liabilities		
Current & Def Tax (Net)	21.4	5.7
Provisions	10.3	7.5
Other Non-financial Liabilities	12.8	12.6
Total Liabilities	1808.1	1431.6
Net Worth	2509.1	2334.0
Non-Controlling Interest	15.4	14.9
Total Liabilities & Equity	4332.6	3780.5

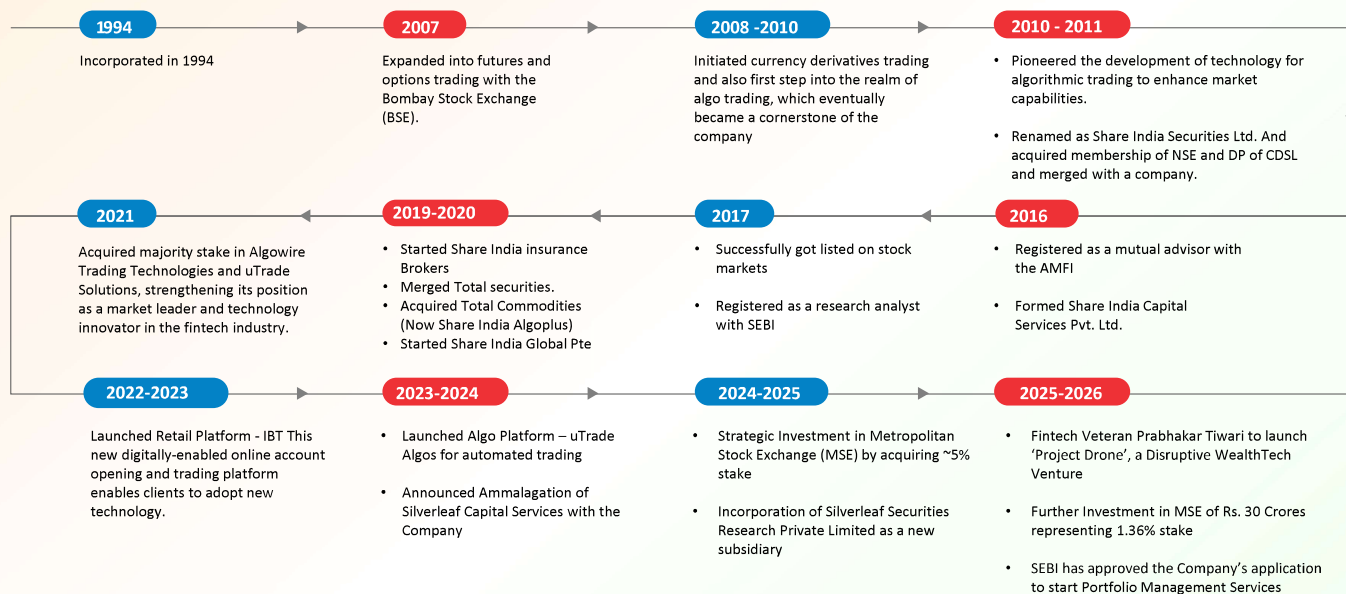
Particulars (In ₹ Cr)	H1 FY26	FY25
Assets		
Financial Assets		
Cash & Cash Equivalents	2,673.1	2,459.8
Trade & Other Receivables	39.5	33.7
Loans	672.3	526.1
Investments	274.6	354.5
Other Financial Assets	542.3	276.0
Non-financial Assets		
Fixed Assets	67.1	71.8
Current & Def. Tax (Net)	15.8	15.9
Other Non-Financial Assets	48.0	42.7
Total Assets	4,332.6	3,780.5



Annexures

Overview

Journey



Management Team



Mr. Parveen Gupta

Chairman and Managing Director



Mr. Kamlesh Vadilal Shah

Managing Director



Mr. Sachin Gupta

CEO & Whole Time Director



Mr. Vijay Vora

Whole Time Director



Mr. Rajesh Gupta

Director



Mr. Suresh Arora

Whole Time Director



Mr. Abhinav Gupta

President
Capital Markets & Products



Mr. Kunal Nandwani

Director Utrade



Mr. Ajay Patel

CEO
Share India Insurance



Mr. Bhavya Arnav

Director Algowire



Mr. Vijay Rana

CFO



Mr. Vikas Aggarwal

Company Secretary &
Compliance Officer



Mr. Keshav Goyal

Share India Greyhill



Mr. Piyush Kedia

Director Silverleaf Securities Research



Mr. Gajendra Nagpal

President Marketing



Mr. Kalpesh Pareek

Head Equity



Mr. Ganapathy Puranik

Head Asset Management

Thank You



COMPANY



Share India Securities Limited
CIN: L67120GJ1994PLC115132
Email: abhinav@shareindia.com

Website: www.shareindia.com

INVESTOR RELATIONS ADVISORS



Adfactors Investor Relations

Ms. Samruddhi Bane
+91 9619624264
Samruddhi.bane@adfactorspr.com

Mr. Amit Sharma
+91 9867726686
amit.sharma@adfactorspr.com

