

May 11, 2026

**The Manager – Listing  
National Stock Exchange of India Limited  
(Scrip Symbol: PVRINOX)**

**The Manager – Listing  
BSE Limited  
(Scrip Code: 532689)**

**Sub: 4<sup>th</sup> Quarter & FY 2025-26 - Investor Presentation**

Dear Sir/Madam,

Please find attached presentation on Investor update for the Fourth Quarter & Financial Year ended 31<sup>st</sup> March, 2026.

This is for your information and to all concerned.

Yours sincerely,  
For **PVR INOX Limited**

**Murlee Manohar Jain  
SVP - Company Secretary  
& Compliance Officer**

Encl: A/a.



**PVR** ★ **INOX**  
May 11<sup>th</sup>, 2026

**INVESTOR UPDATE**  
**Q4 & 12M FY'26**

# DISCLAIMER

---

This presentation has been prepared for general information purposes in respect of PVR INOX Limited (“Company”) together with its subsidiaries and joint venture (together, with the “Company”, the “Group”) only, without regard to any specific objectives, suitability, financial situations and needs of any particular person and does not constitute any recommendation or form part of any offer or invitation, directly or indirectly, in any manner, or inducement to sell or issue, or any solicitation of any offer to purchase or subscribe for, any securities of the Company in any jurisdiction, nor shall it or any part of it or the fact of its distribution form the basis of, or be relied on in connection with, any contract or commitment therefor. This presentation does not solicit any action based on the material contained herein. Nothing in this presentation is intended by the Group to be construed as legal, accounting or tax advice.

This presentation has not been approved and will not or may not be reviewed or approved by any statutory or regulatory authority in India or by any Stock Exchange in India.

This presentation contains certain forward-looking statements relating to the business, financial performance, strategy and results of the Group and/ or the industry in which it operates. Forward-looking statements are statements concerning future circumstances and results, and any other statements that are not historical facts, sometimes identified by the words including, without limitation “believes”, “expects”, “predicts”, “intends”, “projects”, “plans”, “estimates”, “aims”, “foresees”, “anticipates”, “targets”, and similar expressions. The forward-looking statements, including those cited from third party sources, contained in this presentation are based on numerous assumptions and are uncertain and subject to risks. A multitude of factors including, but not limited to, changes in demand, competition and technology, can cause actual events, performance or results to differ significantly from any anticipated development. Neither the Group nor its affiliates or advisors or representatives nor any of its or their parent or subsidiary undertakings or any such person's officers or employees guarantees that the assumptions underlying such forward-looking statements are free from errors nor does either accept any responsibility for the future accuracy of the forward-looking statements contained in this presentation or the actual occurrence of the forecasted developments. Forward-looking statements speak only as of the date of this presentation and are not guarantees of future performance. As a result, the Group expressly disclaims any obligation or undertaking to release any update or revisions to any forward-looking statements in this presentation as a result of any change in expectations or any change in events, conditions, assumptions or circumstances on which these forward looking statements are based. Given these uncertainties and other factors, viewers of this presentation are cautioned not to place undue reliance on these forward-looking statements. Certain numbers in these presentations and materials have been subject to routine rounding off and accordingly figures shown as total in tables and diagrams may not be an arithmetic aggregation of the figures that precede them.

The information contained in these presentations and materials are only current as of the dates specified herein and have not been independently verified. None of the Group, its directors, promoters or affiliates, nor any of its or their respective employees, advisers or representatives or any other person accepts any responsibility or liability whatsoever, whether arising in tort, contract or otherwise, for any errors, omissions or inaccuracies in such information or opinions or for any loss, cost or damage suffered or incurred howsoever arising, directly or indirectly, from any use of this presentation or its contents or otherwise in connection with this presentation, and makes no representation or warranty, express or implied, for the contents of this presentation including its accuracy, fairness, completeness or verification or for any other statement made or purported to be made by any of them, or on behalf of them, and nothing in this presentation or at this presentation shall be relied upon as a promise or representation in this respect, whether as to the past or the future. Past performance is not a guide for future performance. The information contained in this presentation is current, and if not stated otherwise, made as of the date of this presentation. The Group undertakes no obligation to update or revise any information in this presentation as a result of new information, future events or otherwise. Any person/ party intending to provide finance/ invest in the shares/ businesses of the Group shall do so after seeking their own professional advice and after carrying out their own due diligence procedure to ensure that they are making an informed decision.

# DISCLAIMER

---

This presentation is not a prospectus, a statement in lieu of a prospectus, an offering circular, an advertisement or an offer document under the Companies Act, 2013, as amended, the Securities and Exchange Board of India (Issue of Capital and Disclosure Requirements) Regulations, 2018, as amended, or any other applicable law in India.

This presentation is strictly confidential and may not be copied or disseminated, reproduced, re-circulated, re-distributed, published or advertised in any media, website or otherwise, in whole or in part, and in any manner or for any purpose. Any unauthorized use, disclosure or public dissemination of information contained herein is prohibited. No person is authorized to give any information or to make any representation not contained in or inconsistent with this presentation and if given or made, such information or representation must not be relied upon as having been authorized by any person. Failure to comply with this restriction may constitute a violation of the applicable securities laws. Accordingly, any persons in possession of the aforesaid should inform themselves about and observe any such restrictions. By reviewing this presentation, you agree to be bound by the foregoing limitations. You may not repackage or sell the presentation. Information contained in a presentation hosted or promoted by the Group is provided “as is” without warranty of any kind, either expressed or implied, including any warranty of fitness for a particular purpose.

By accessing this presentation, you accept this disclaimer and any claims arising out of or in connection with this presentation shall be governed by the laws of India and only the courts in Gurugram, India, and no other courts shall have jurisdiction over the same.

01	INDUSTRY UPDATE	5
02	Q4 & FY'26 RESULTS HIGHLIGHTS	9
03	RESULTS ANALYSIS	14
04	SCREEN GROWTH UPDATE	19
05	CASH FLOW AND BALANCE SHEET	25
06	ANNEXURES	29
07	CONTENT LINEUP	34

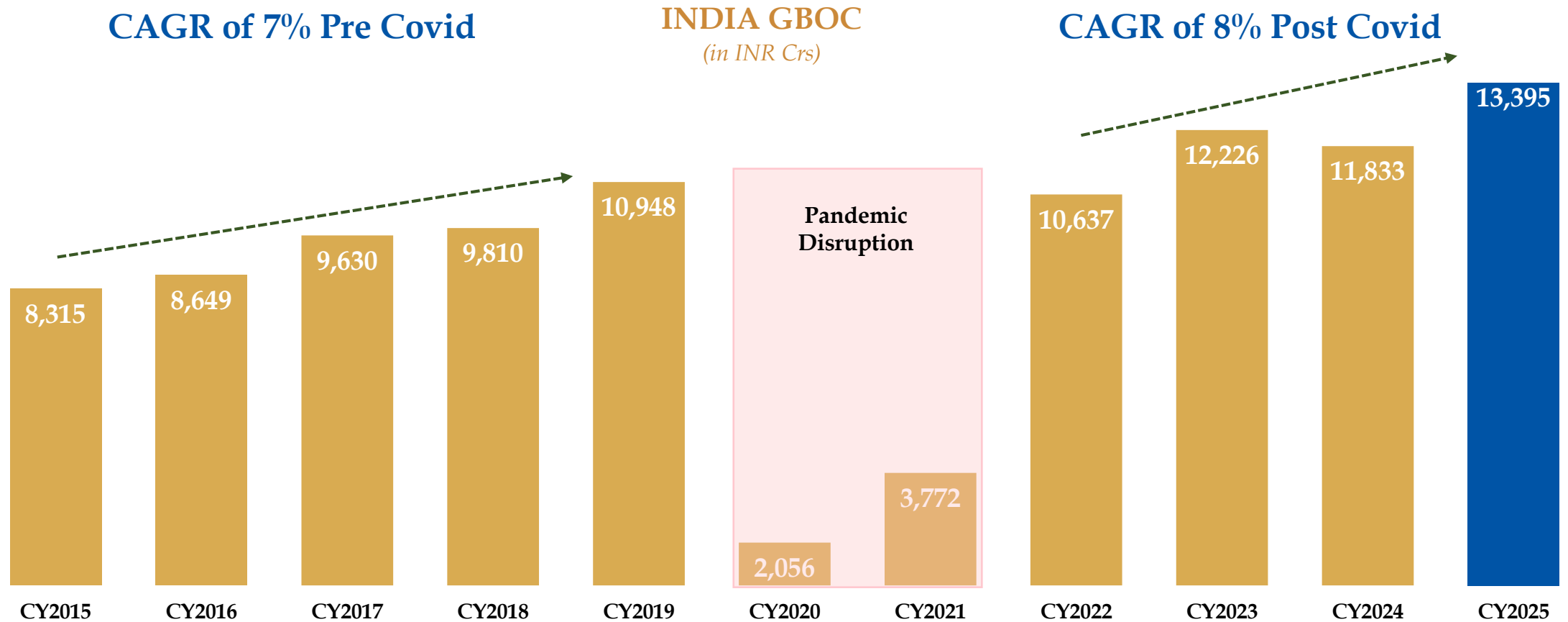


# THE REVENANT

INDUSTRY UPDATE

# India Box Office: A Clear Long Term Growth Story

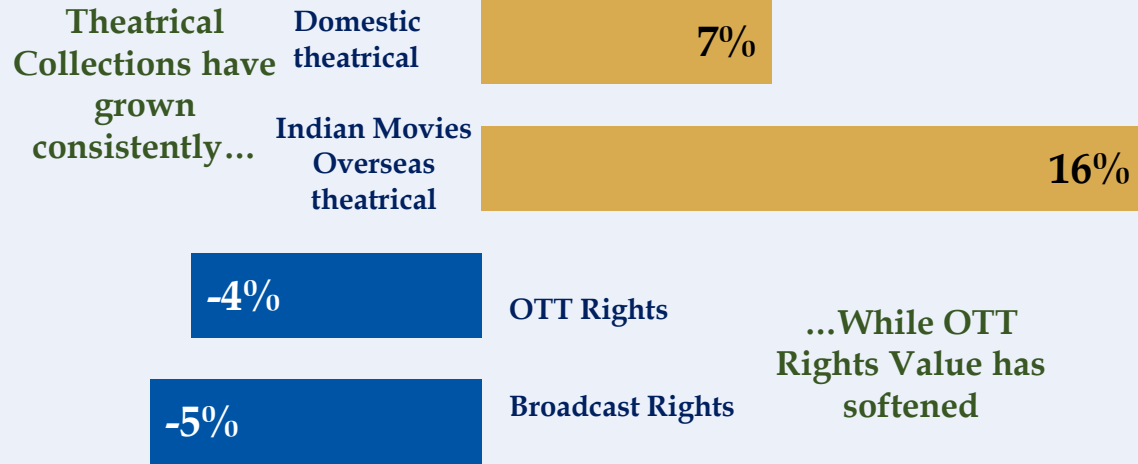
## STRONG STRUCTURAL DEMAND FOR OUT-OF-HOME ENTERTAINMENT IN INDIA



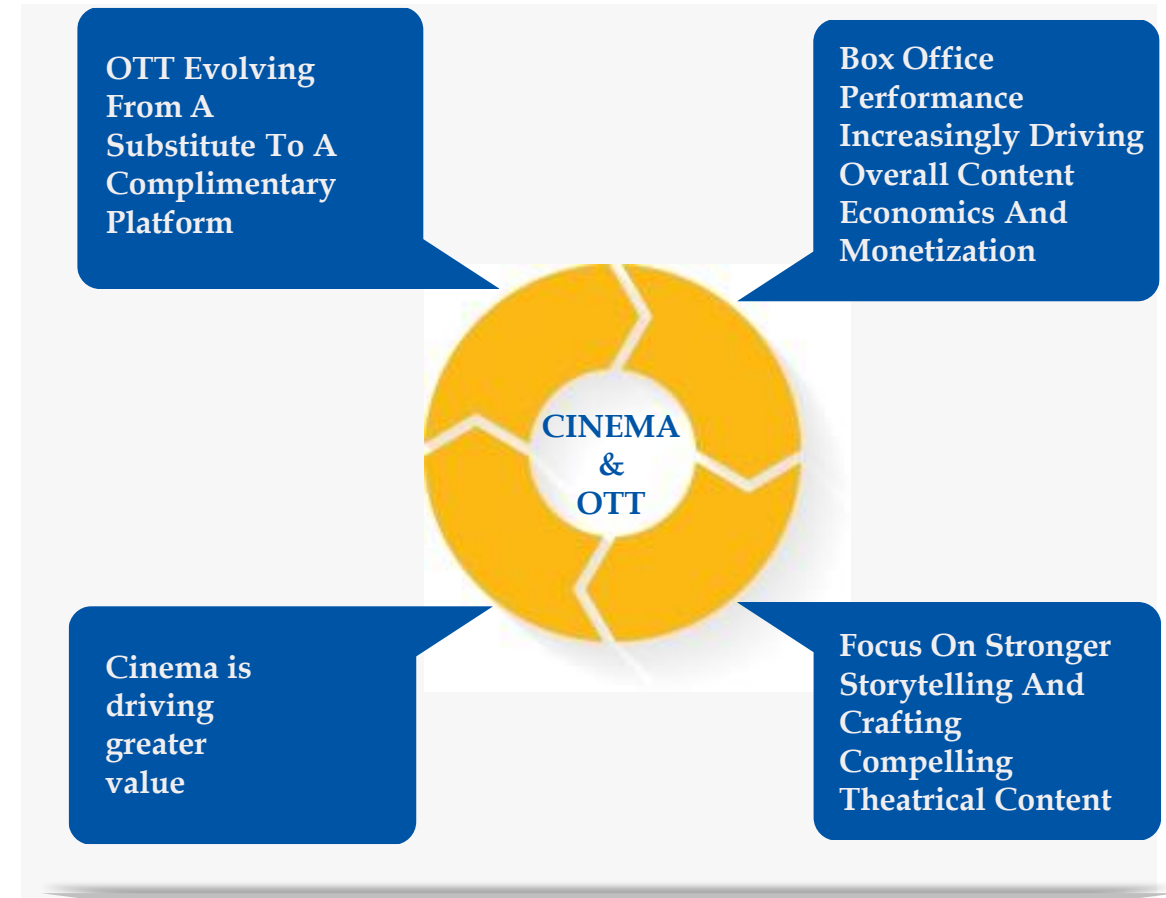
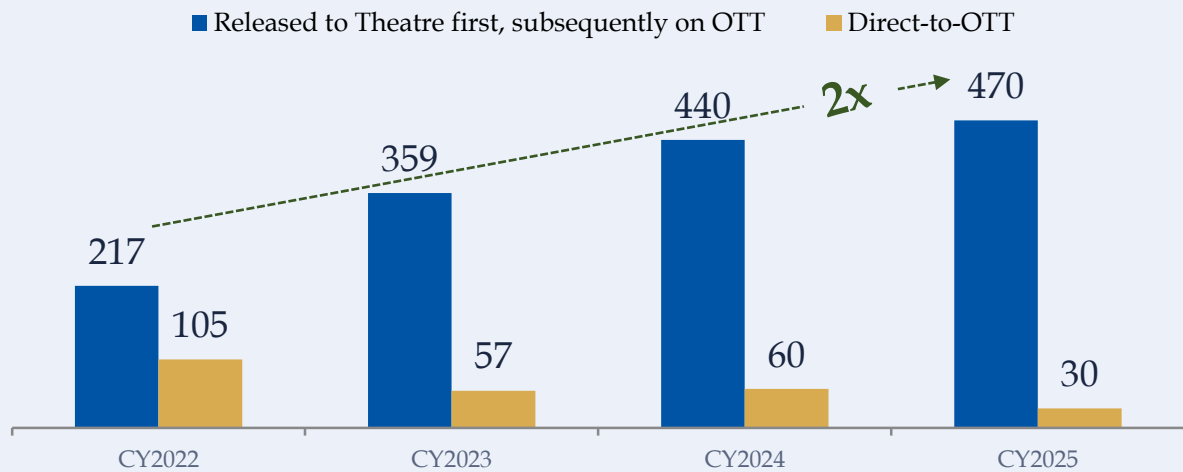
**INDIA BOX OFFICE HAS CONSISTENTLY GROWN AT 7-8% OVER LONG TERM**

# India Industry Dynamics Favor Theatres

## India Filmed Entertainment Revenue CAGR (2022 - 2025)



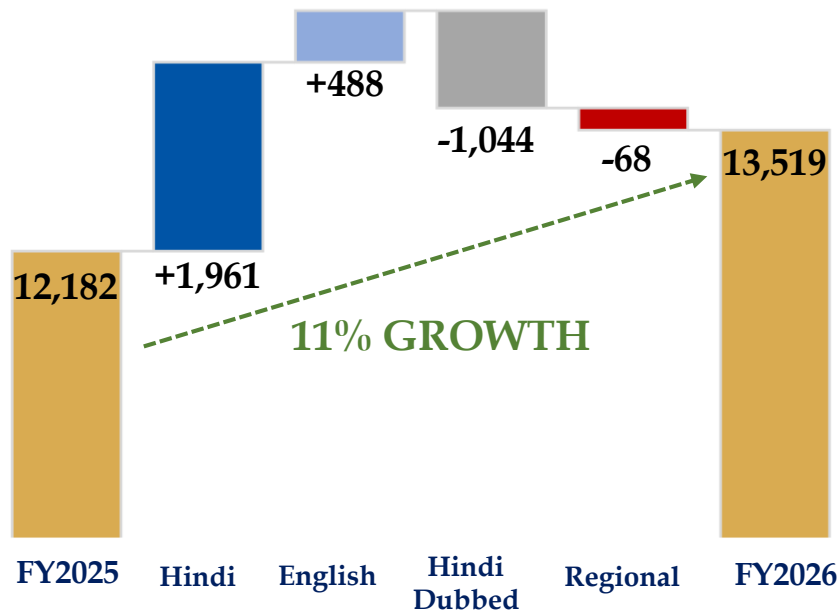
## Releases Shifting Back To Theatrical First, Multi Platform Model



**CINEMA SETS THE QUANTITATIVE & QUALITATIVE BENCHMARK FOR A FILM**

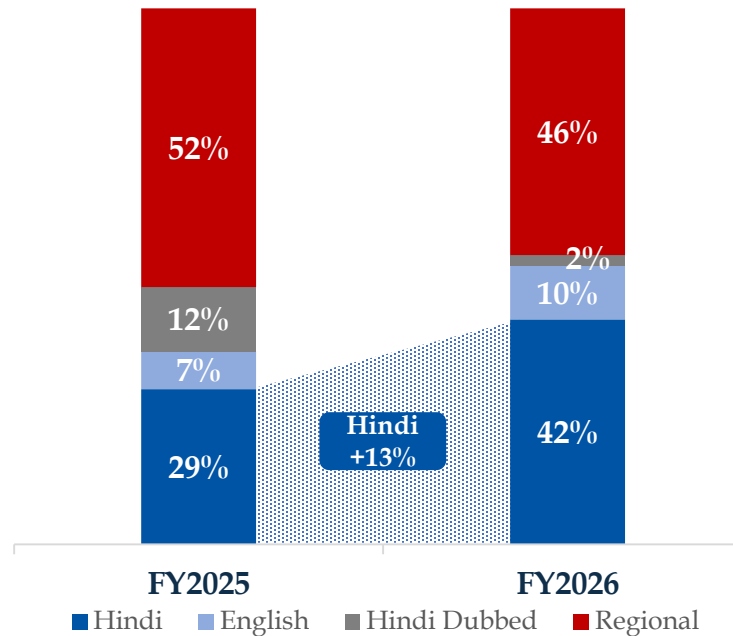
# India Box Office FY26: Broader & More Balanced Growth

## India GBOC Up 11% to INR 13,519 Cr in FY'26

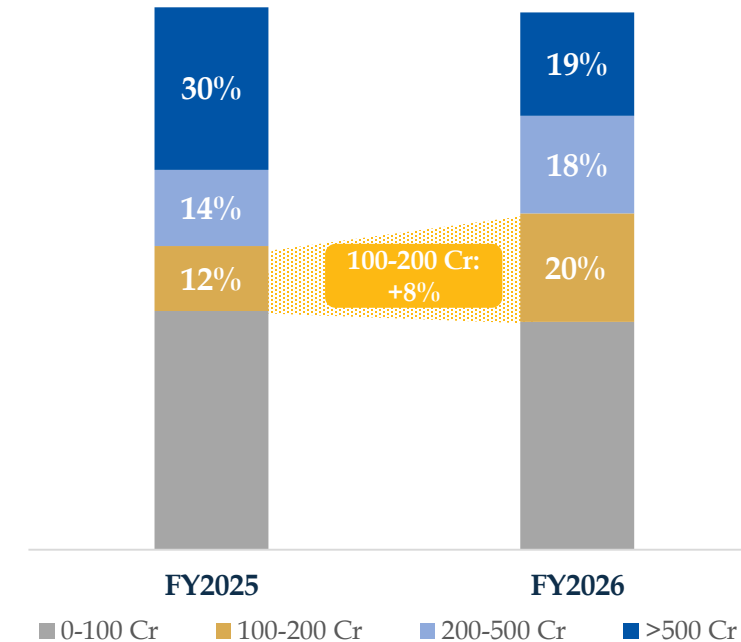


All Figures in INR Cr  
Chart Not to Scale

## Original Hindi Best Ever Performance



## Mid Budget Films Make A Comeback



- 55% Growth in Hindi GBOC driven by consistent Bollywood performance
- 54% Growth in English GBOC as Hollywood releases normalize post strike

- Compelling Hindi Content leading to increase in Original Hindi Share to 42%

- Share of 100-200 Cr. GBOC Films increased from 12% to 20 %
- Less reliance on Mega Blockbusters as its share drops from 30% to 19%



# Q4 & FY'26 RESULTS HIGHLIGHTS

# FY'26: Record Breaking Performance

## KEY MILESTONES



**HIGHEST  
Revenue**

**INR 67,426 Mn**

*Ever*



**HIGHEST  
EBITDA<sup>1</sup>**

**INR 9,680 Mn**

*Ever*



**HIGHEST  
PAT<sup>2</sup>**

**INR 3,868 Mn**

*Ever*



**HIGHEST  
ATP & SPH**

**280 | 147**

*Ever*



**NEGLIGIBLE  
Net Debt**

**INR 1,619 Mn**

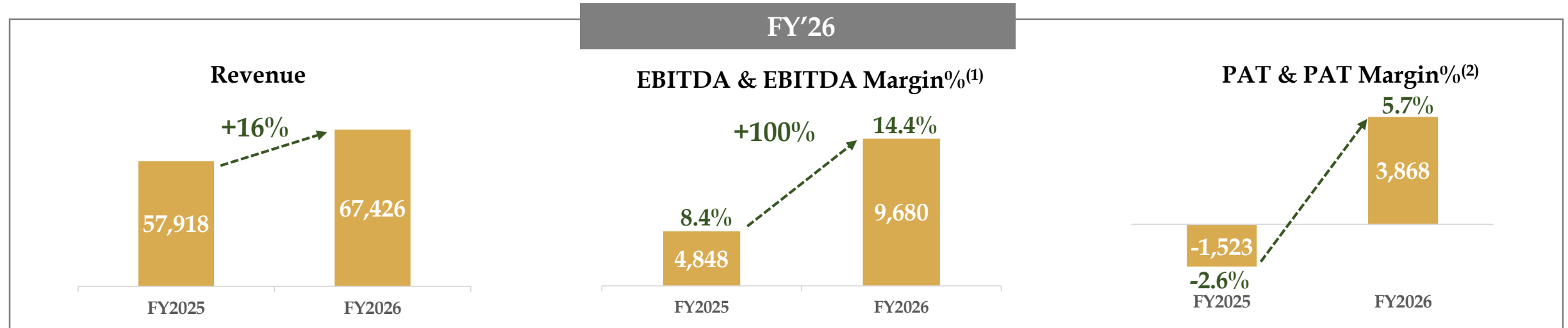
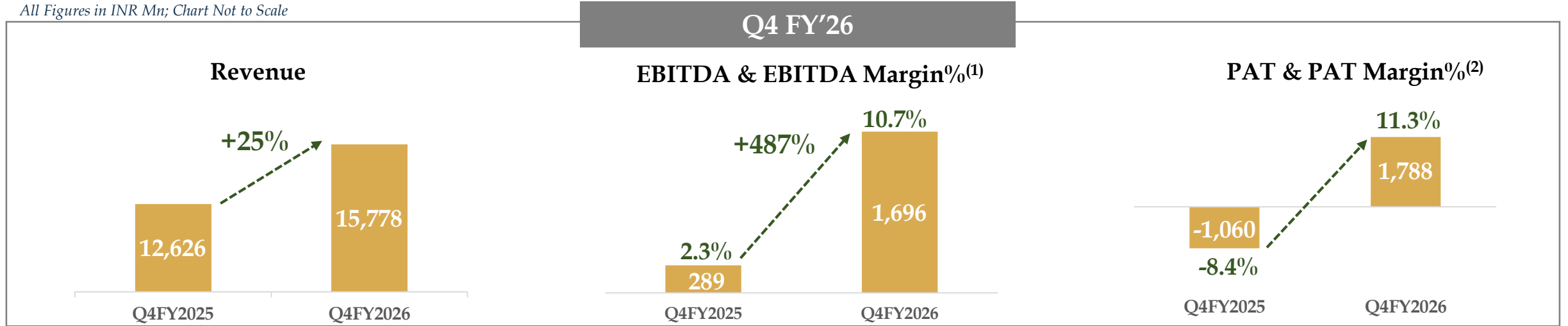
*Towards +ve Net Cash*

**BEST EVER OPERATING AND FINANCIAL PERFORMANCE - REINFORCING OUR LEADERSHIP IN  
INDIAN CINEMA EXHIBITION**

Note: Above Financial Numbers are after excluding the Impact of IND AS 116 - 'Leases'  
(1) EBITDA is before exceptional items (2) PAT includes gains on disposal of subsidiary 'Zea Maize Pvt. Ltd'(4700 BC)

# Key Financial Highlights

All Figures in INR Mn; Chart Not to Scale



## FY'26 REVENUE UP 16%, EBITDA DOUBLED, PAT TURNS POSITIVE

Note: Above Financial Numbers are after excluding the Impact of IND AS 116 'Leases'

(1) EBITDA is before exceptional items (2) PAT includes gain on disposal of subsidiary 'Zea Maize Pvt. Ltd'. PAT from continuing operations is INR 75 Mn for Q4FY'26 and INR 2,306 Mn for FY'26.

# Key Operating Highlights

Particulars		Q4, FY'26	Q4, FY'25	Y-o-Y Growth	12M, FY'26	12M, FY'25	Y-o-Y Growth
<b>Cinema Count (at the end of period) <sup>(1)</sup></b>		359	349	2.9% ↑	359	349	2.9% ↑
<b>Screen Count (at the end of period) <sup>(1)</sup></b>		1,798	1,723	4.4% ↑	1,798	1,723	4.4% ↑
<b>Admissions</b>	Mns	31.0	30.5	1.5% ↑	150.1	136.9	9.6% ↑
<b>Occupancy</b>	%	23.9%	20.5%	338 bps ↑	26.2%	23.0%	312 bps ↑
<b>Avg. Ticket Price (ATP)</b>	INR	315	258	22.4% ↑	280	259	8.1% ↑
<b>F&amp;B Spend per Head (SPH)</b>	INR	165	125	32.3% ↑	147	134	9.5% ↑

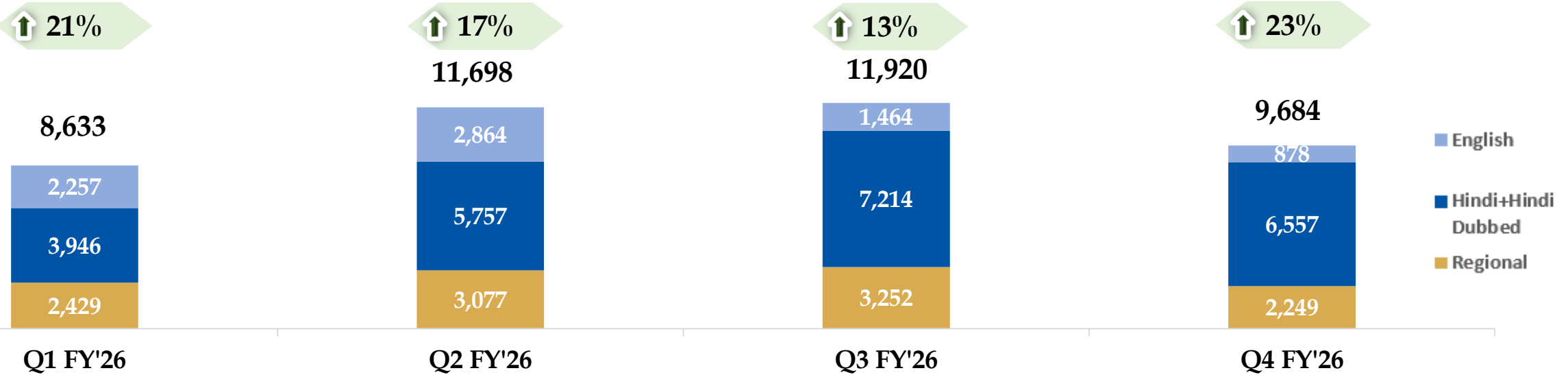
**FY'26 HIGHEST- EVER ATP AT INR 280 AND F&B SPH AT INR 147; ADMISSIONS UP 10%**

(1) Includes 71 management screens across 19 cinemas which are managed under a 'Management fee' model. The above table excludes Operating KPIs of management properties

## PVRINOX GBOC: FY'26 Witnessed Consistent YoY Growth Across Quarters

All Figures in INR Mn

YoY Growth%



**Sitaare Zameen Par**  
(Hindi)  
PVRINOX | Industry  
960 Mn | **2,006 Mn**



**Saiyaara**  
(Hindi)  
PVRINOX | Industry  
1,470 Mn | **3,990 Mn**



**Dhurandhar**  
(Hindi)  
PVRINOX | Industry  
3,280 Mn | **8,440 Mn**



**Dhurandhar: The Revenge**  
(Hindi)  
PVRINOX | Industry  
3,520 Mn | **9,220 Mn**



**Raid 2**  
(Hindi)  
PVRINOX | Industry  
840 Mn | **2,065 Mn**



**Mahavtaar Narsimha**  
(Hindi)  
PVRINOX | Industry  
1,140 Mn | **3,010 Mn**



**Kantara: The Legend**  
(Kannada)  
PVRINOX | Industry  
2,070 Mn | **7,240 Mn**



**Border 2**  
(Hindi)  
PVRINOX | Industry  
910 Mn | **3,790 Mn**



**Housefull 5**  
(Hindi)  
PVRINOX | Industry  
721 Mn | **2,185 Mn**



**War 2**  
(Hindi)  
PVRINOX | Industry  
840 Mn | **2,830 Mn**



**Avatar: Fire and Ice**  
(English)  
PVRINOX | Industry  
830 Mn | **1,720 Mn**



**Mana Shankara Vara Prasad Guru**  
(Telugu)  
PVRINOX | Industry  
280 Mn | **2,550 Mn**

Note: Collections are for the Quarter. Source: Ormax Media

INVESTOR UPDATE : Q4 & 12M FY'26



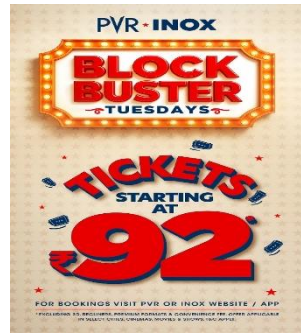
# RESULTS ANALYSIS

# Initiatives to Boost Revenue: *Driving Footfalls through Experience and Occasion*



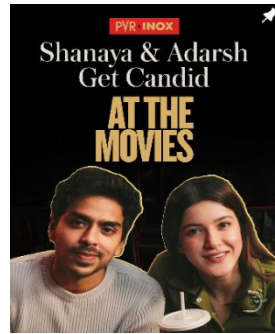
## Targeted Promotions

Weekday deals across segments



## Innovative Movie Marketing

Creating Buzz



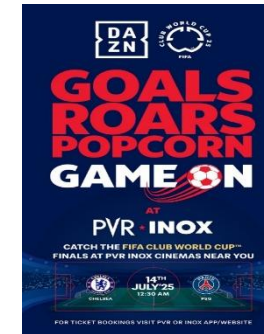
## Film Festivals & Curated Shows

Broaden Offering



## Alternate Content

Use Of Cinema Beyond Showcasing



## F&B Innovation & Promotion



# Revenue Analysis

Particulars (INR Mn)	Q4, FY'26	Q4, FY'25	Y-o-Y Growth	12M, FY'26	12M, FY'25	Y-o-Y Growth
<b>Weighted Average Screens <sup>(1)</sup></b>	<b>1,721</b>	<b>1,688</b>	<b>2.0%</b>	<b>1,703</b>	<b>1,701</b>	<b>0.1%</b>
Sale of Movie Tickets	8,185	6,447	27.0%	35,301	29,549	19.5%
Sale of Food & Beverages	4,820	3,612	33.4%	20,884	17,470	19.5%
<b>Advertisement Income</b>	<b>1,104</b>	962	14.8%	4,636	4,475	3.6%
Convenience Fees	579	442	31.0%	2,410	2,111	14.2%
Other Operating Income <sup>(2),(3)</sup>	785	836	-6.1%	3,231	3,394	-4.8%
Other Income <sup>(4)</sup>	305	327	-6.7%	964	919	4.9%
<b>Total Income</b>	<b>15,778</b>	<b>12,626</b>	<b>25.0%</b>	<b>67,426</b>	<b>57,918</b>	<b>16.4%</b>

Note: Above financial numbers are after excluding the impact of Ind AS 116 - 'Leases'

(1) Weighted average screens has been calculated basis the actual no. of days of operations of each cinema during the period, excluding 71 management screens across 19 cinemas

(2) Decrease in Other Operating Income in Q4FY'26 is due to decrease on account of Income from Film Distribution from INR 548 Mn to INR 525 Mn & Decrease in VPF income from INR 161 Mn to INR 145 Mn

(3) Decrease in Other Operating Income in FY'26 is primarily due to decrease on account of Income from Film Distribution from INR 2,364 Mn to INR 2,224 Mn

(4) Due to reversal of Old Provision in Q4FY'25, Other Income in Q4FY'25 is higher than Q4FY'26

# Expense Analysis

Particulars (INR Mn)	Q4, FY'26	Q4, FY'25	Y-o-Y Growth	12M, FY'26	12M, FY'25	Y-o-Y Growth
<b>Weighted Average Screens</b>	<b>1,721</b>	<b>1,688</b>	<b>2.0%</b>	<b>1,703</b>	<b>1,701</b>	<b>0.1%</b>
<b><u>Variable Cost</u></b>						
FHC (%)	45.4%	42.6%	279 bps	45.4%	44.6%	76 bps
COGS (%)	22.4%	25.1%	-263 bps	22.5%	24.9%	-241 bps
<b><u>Fixed Cost</u></b>						
Rent <sup>(1)</sup>	3,288	3,070	7.1%	13,055	12,358	5.6%
CAM	955	903	5.8%	3,773	3,632	3.9%
Personnel	1,778	1,615	10.1%	7,063	6,540	8.0%
Electricity & Water / Utilities	828	835	-0.8%	3,809	3,938	-3.3%
Other Expenses ex Movie Dist., Print	2,021	1,900	6.4%	7,589	7,192	5.5%
<b>Total Fixed Expenses ( ex Movie Distribution)</b>	<b>8,870</b>	<b>8,323</b>	<b>6.6%</b>	<b>35,289</b>	<b>33,660</b>	<b>4.8%</b>
Movie Dist., Print charges <sup>(2)</sup>	624	584	6.8%	3,160	3,281	-3.7%
<b>Total Fixed Expenses (including Movie Dist.)</b>	<b>9,494</b>	<b>8,907</b>	<b>6.6%</b>	<b>38,449</b>	<b>36,941</b>	<b>4.1%</b>

Consolidated Financials

Note: Above financial numbers are after excluding the impact of Ind AS 116 - 'Leases'

(1) Fixed Rent Escalation in Q4 FY'26 and in FY26 was 5.6% and 3.2%, respectively. The balance increase was on account of increase in variable rental.

(2) Expenses relating to Distribution of movies

		FY'20	6 Year CAGR	FY'26
		PVR + INOX Proforma		PVR + INOX
<b>On per screen basis (INR mn)</b>				
<b>Fixed Costs</b> <i>(excluding Rent &amp; CAM)</i>	Weighted Average Screens	1,371	4%	1,703
	Manpower Cost	5.5	-1%	5.2
	Total Headcount	24,285	15% reduction over 6 years	20,659
	Total Headcount per screen	17.7	32% reduction over 6 years	12.1
	Utilities (Electricity & Water)	2.3	-1%	2.2
	Other Overheads	3.8	-2%	3.4
	<b>Fixed Cost<sup>(2)</sup> / Screen</b>	<b>11.7</b>	<b>-1%</b>	<b>10.8</b>
	<b>Occupancy Cost</b>	Rent	6.2	4% <sup>(1)</sup>
CAM		1.6	6% <sup>(1)</sup>	2.2
<b>Total Fixed Cost<sup>(2)</sup> / Screen</b>		<b>19.4</b>	<b>1%</b>	<b>20.7</b>

(1) In line with contractual Rent & CAM escalation terms

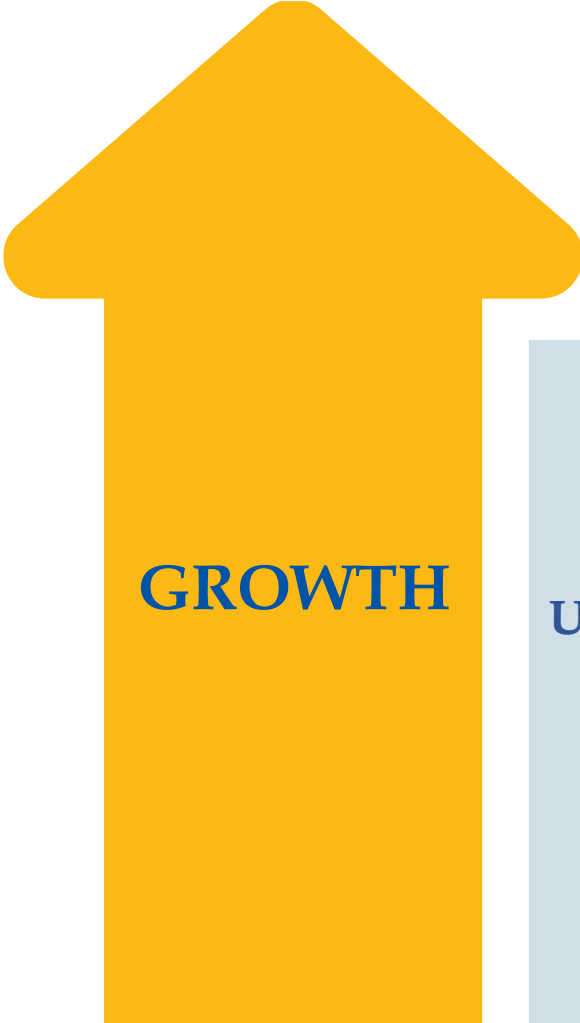
(2) Excluding Movie Distribution and Print charges

**SUSTAINED COST DISCIPLINE HAS HELD FIXED COST NEARLY FLAT OVER 6 YEARS, EVEN AS CPI ROSE ~37%**

Note: Above financial numbers are after excluding the impact of Ind AS 116 - 'Leases'



SCREEN GROWTH UPDATE



01

Accelerate Growth in Underpenetrated South Indian Markets

>40% NEW SCREEN ADDITIONS IN SOUTH

02

Capital light Expansion - Asset Light and FOCO

MAJORITY NEW SCREENS TO BE CAPITAL LIGHT

03

Expand in tier 2 & tier 3 cities

AFFORDABLE OFFERING

04

Increase premium formats share

DIFFERENTIATED EXPERIENCE

# FY'26 Screen Additions: Tilted to South

#	CINEMAS OPENED IN Q1 FY'26	OPENING DATE	SCREENS
1.	PVR ELAN MIRACLE 84, GURGAON	25-APR-25	6
2.	PVR ZORA MALL, RAIPUR	25-APR-25	5
3.	PVR KA MALL, JABALPUR	30-APR-25	4
4.	PVR DIRECTOR'S CUT, MALL OF INDIA, NOIDA <sup>(1)</sup>	2-MAY-25	5
<b>NEW SCREENS OPENED IN Q1 FY'26</b>			<b>20</b>

(1) 5 DIRECTOR'S CUT SCREENS WERE ADDED TO OUR EXISTING CINEMA IN MALL OF INDIA, NOIDA

#	CINEMAS OPENED IN Q2 FY'26	OPENING DATE	SCREENS
5.	INOX SMR VINAY METRO MALL, HYDERABAD	4-JUL-25	4
6.	INOX OBEROI SKY CITY, BORIVALI, MUMBAI	14-AUG-25	10
7.	INOX M5 E-CITY, BENGALURU	15-AUG-25	8
<b>NEW SCREENS OPENED IN Q2 FY'26</b>			<b>22</b>

#	CINEMAS OPENED IN Q3 FY'26	OPENING DATE	SCREENS
8.	INOX ML ACROPOLIS MALL, SILIGURI	15-OCT-25	4
9.	PVR WEST POINT, GANGTOK SIKKIM	24-OCT-25	3
10.	PVR ELEGANTE MALL, NSP PITAMPURA, NEW DELHI	20-NOV-25	6
11.	PVR INORBIT CYBERABAD, HYDERABAD <sup>(2)</sup>	12-DEC-25	5
12.	PVR LEH, J & K	20-DEC-25	2
<b>NEW SCREENS OPENED IN Q3 FY'26</b>			<b>20</b>

(2) 5 SCREENS WERE ADDED TO OUR EXISTING CINEMA IN INORBIT HYDERABAD

#	CINEMAS OPENED IN Q4 FY'26	OPENING DATE	SCREENS
13.	PVR LAKESHORE MALL, (Y JUNCTION) HYDERABAD	23-JAN-26	9
14.	INOX ODEON HYDERABAD	4-FEB-26	8
15.	PVR INORBIT MALL, HUBLI	20-FEB-26	7
16.	PVR ANJANA MALL, AGRA	19-MAR-26	4
17.	PVR DLF ONE MID TOWN PLAZA, NEW DELHI	19-MAR-26	3
<b>NEW SCREENS OPENED IN Q4 FY'26</b>			<b>31</b>

## NET SCREEN ADDITION - FY'26



NEW SCREENS  
OPENED

SCREENS  
CLOSED

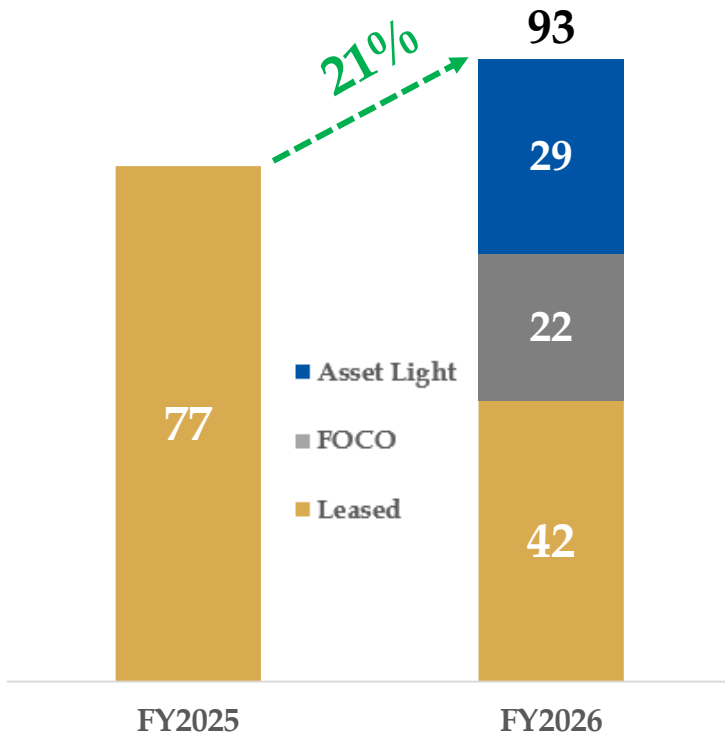
NET SCREEN  
ADDITION

44% of New Screen Additions  
Done In South

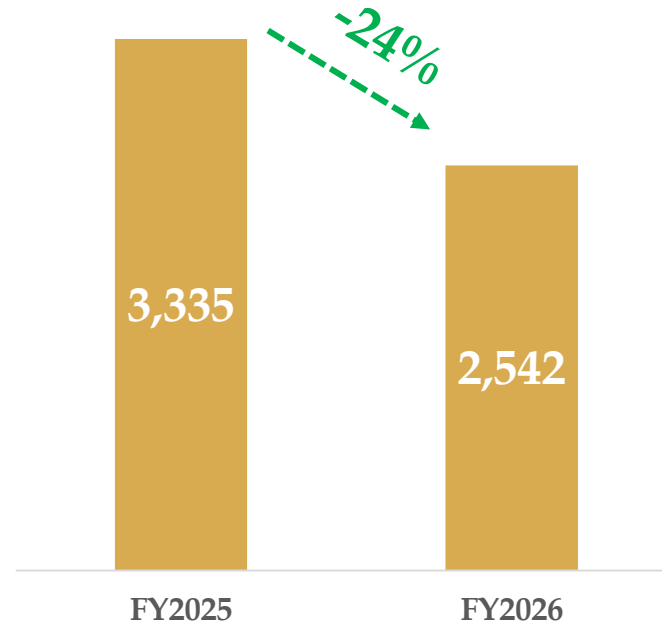


# 'Capital-Light' is Now 55% of New Screens; Capex Intensity Down 24%

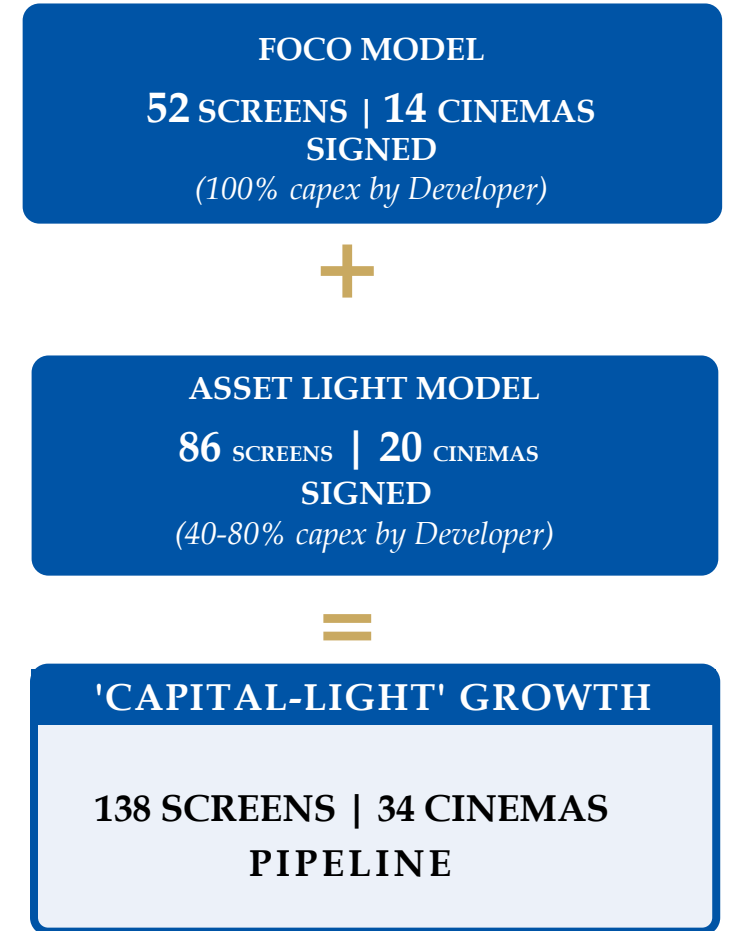
## New Screens Addition Mix



## Capex (INR Mn)

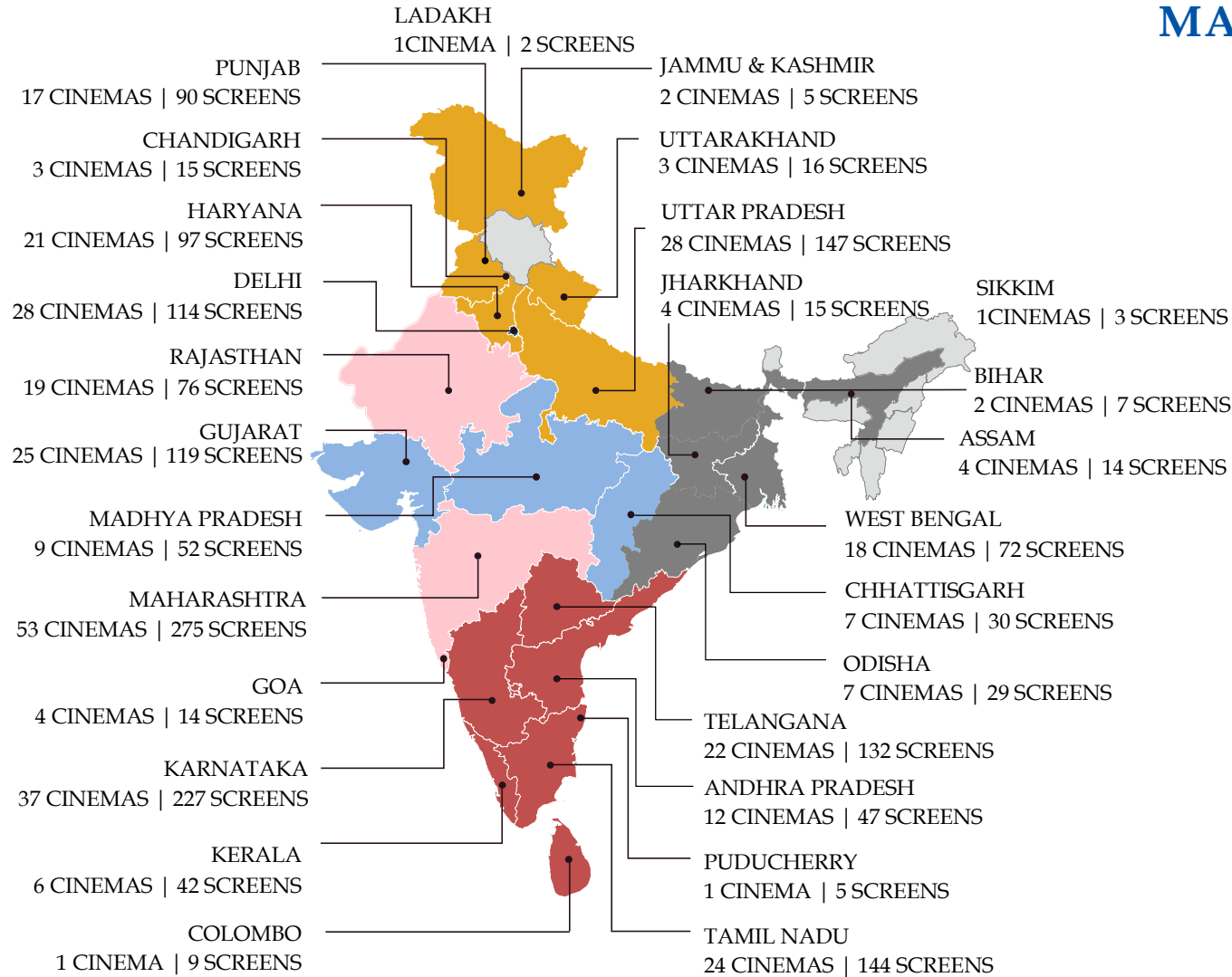


## New Screens Pipeline

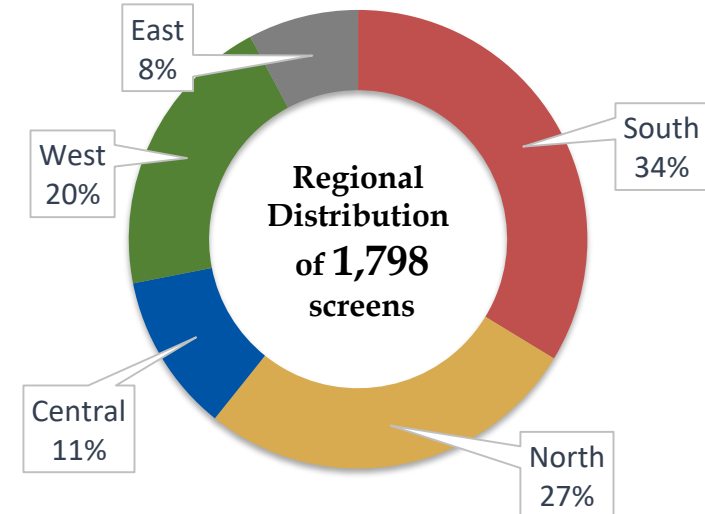
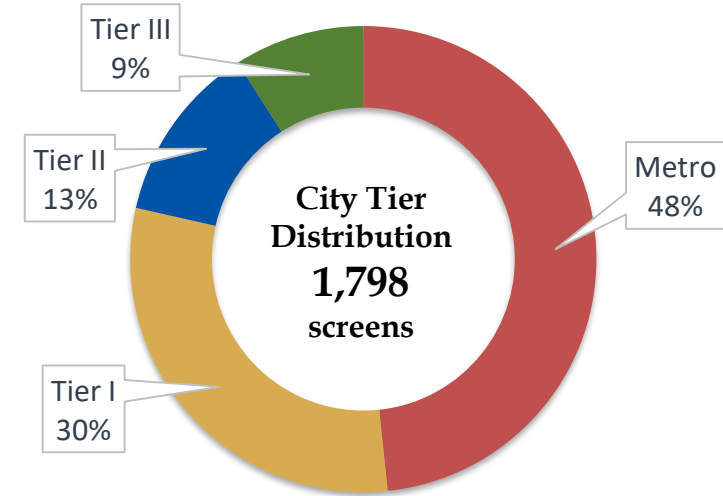


- Majority of New Screens Additions are Capital Light
- Leading to Drop in Capex Intensity by 24% YoY

# Diversified Network of 1,798 Screens in 113 Cities



## MAKING THE BRAND 'ASPIRATIONAL' & 'AFFORDABLE'



Note 1: Includes 19 Management Properties With 71 Screens. Screen Portfolio as on 31<sup>st</sup> March 2026

Note 2: South Includes Sri Lanka

# Growing Presence of Premium Formats

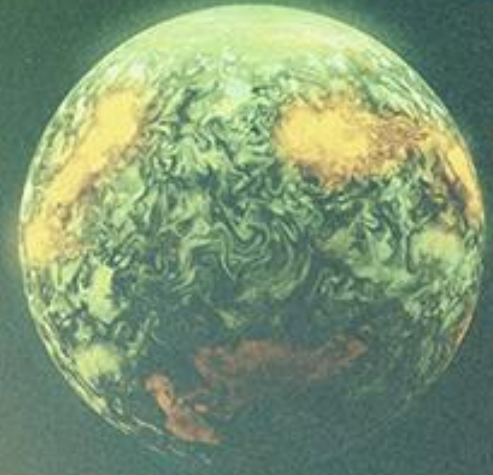


286 Screens	159	26	37	4	24	4	2	8	22
Features	<ul style="list-style-type: none"> <li>Experience luxury at its best.</li> </ul>	<ul style="list-style-type: none"> <li>Immersive movie experience</li> <li>Crystal-clear images</li> <li>Giant screens</li> <li>Powerful digital surround sound</li> </ul>	<ul style="list-style-type: none"> <li>Special designed motion seats and synchronized to on-screen action</li> <li>Environmental effects like wind, mist, bubbles and more</li> </ul>	<ul style="list-style-type: none"> <li>4K projection and superior surround Dolby Atmos® audio.</li> <li>LED panels on the side walls</li> </ul>	<ul style="list-style-type: none"> <li>Equipped with extra - large screens</li> <li>Dual 4K or RGB laser projection systems and advanced Dolby Atmos sound</li> </ul>	<ul style="list-style-type: none"> <li>270-degree, panoramic movie- watching experience</li> </ul>	<ul style="list-style-type: none"> <li>Offering a projector-less movie going experience by bringing the visual power of LED picture quality to the big screen</li> </ul>	<ul style="list-style-type: none"> <li>Premium movie watching concept.</li> </ul>	<ul style="list-style-type: none"> <li>Colorful décor and playful seating</li> <li>A selection of family-friendly films and an indoor play structure where kids can climb, slide and explore</li> </ul>

**PREMIUM FORMATS ACCOUNT FOR 16% OF TOTAL SCREENS**

RYAN GOSLING

BELIEVE



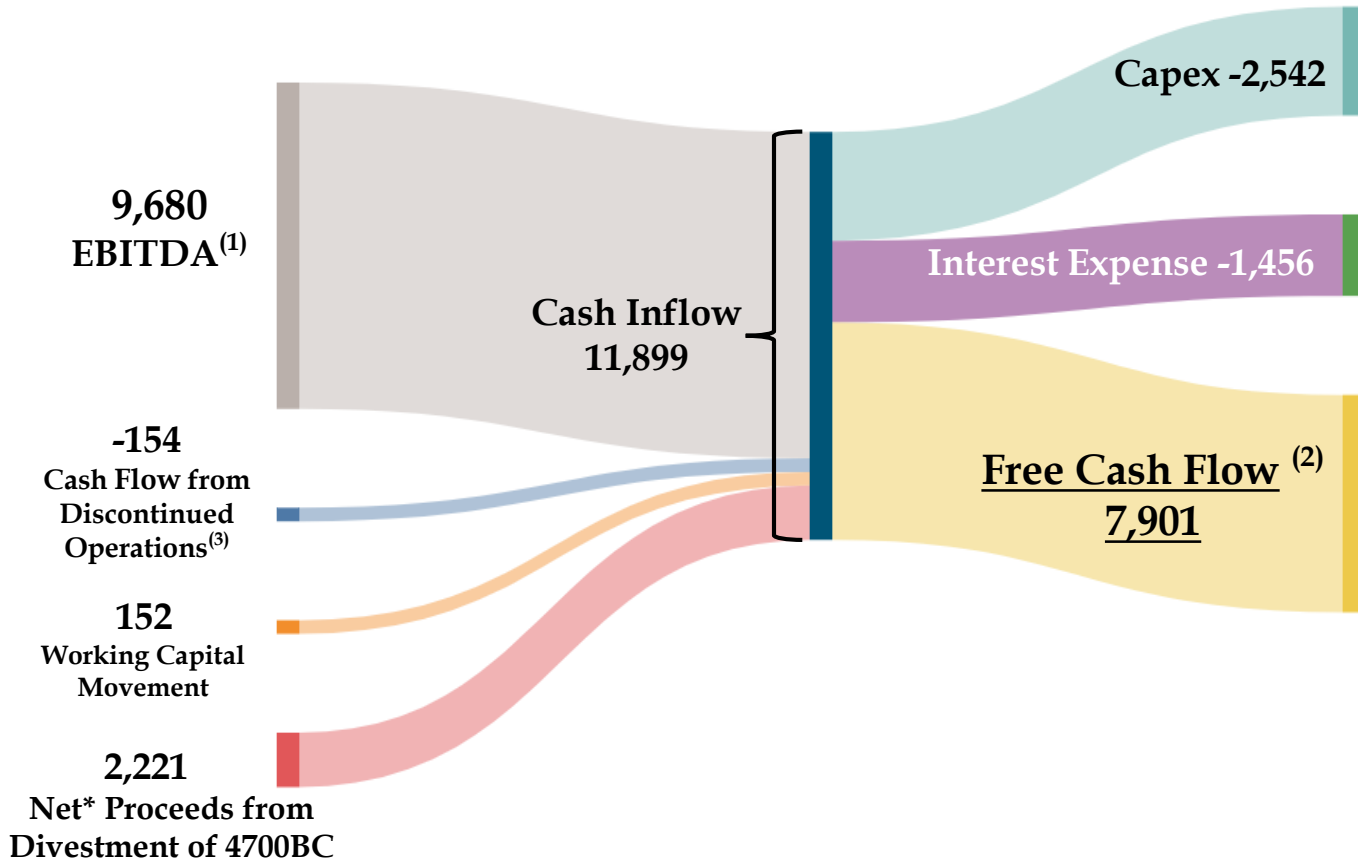
IN THE

**CASH FLOW AND BALANCE SHEET**

# Free Cash Flow: Consistently Stronger, Year After Year

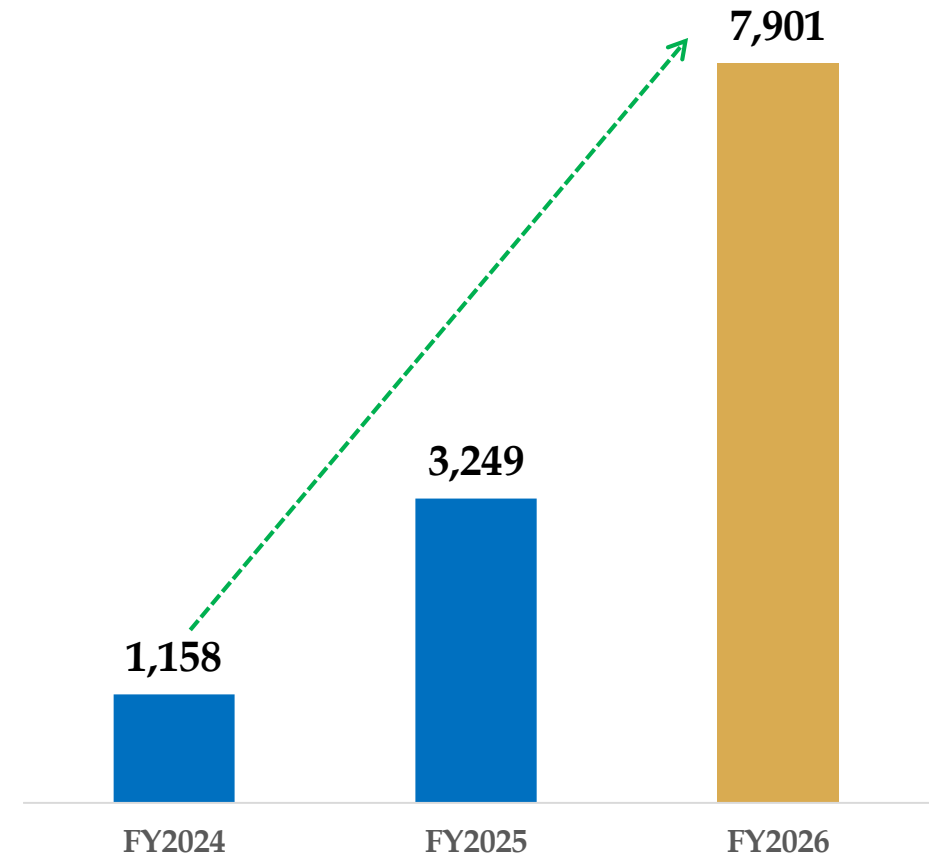
All Figures in INR Mn

## FREE CASH FLOW FY'26



\*Net of transaction expenses. Gross Proceeds : INR 2,268 Mn

## FY'26 FCF More Than 2x FY25, ~7x FY24



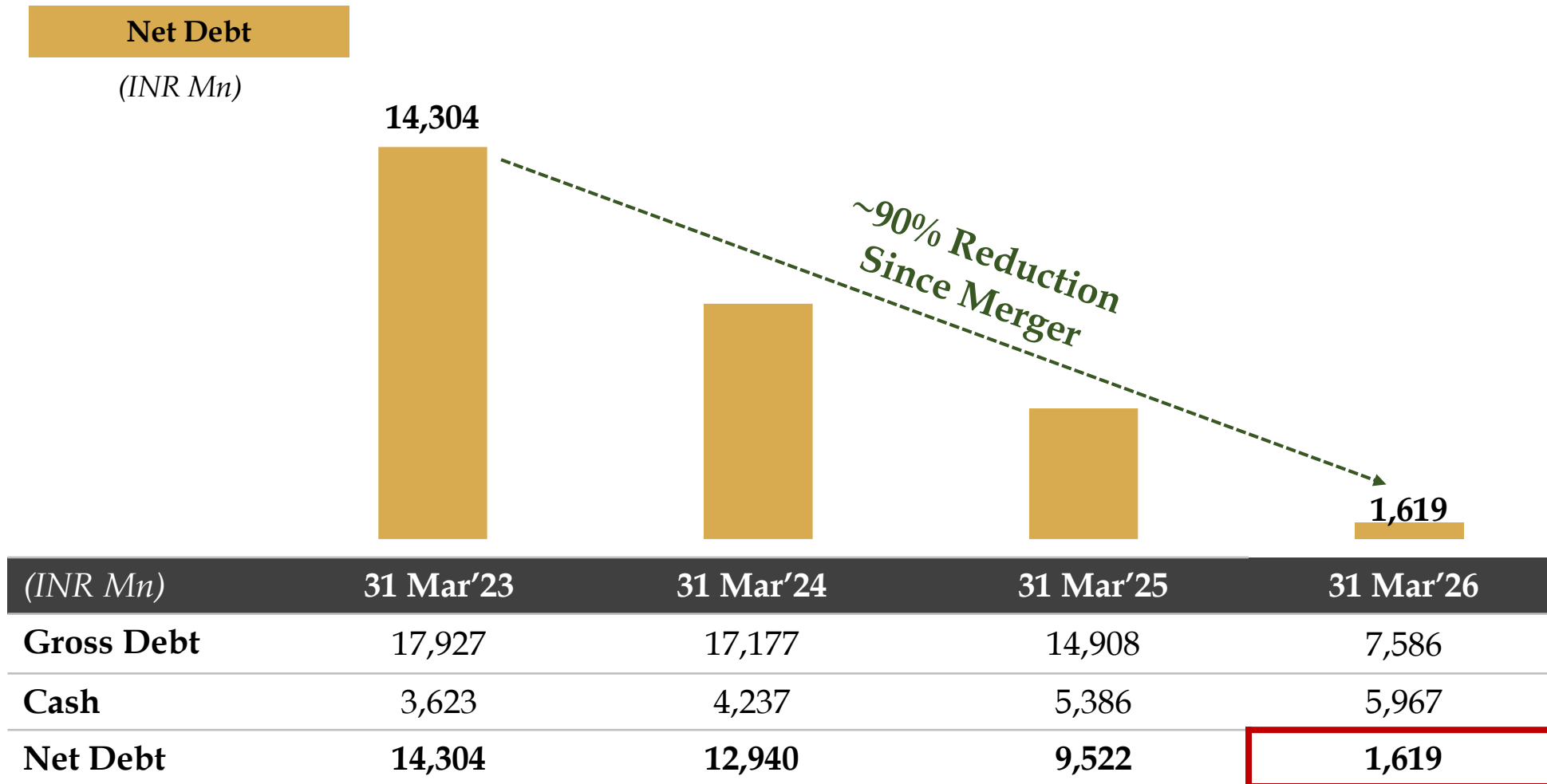
## ROBUST OPERATING CASH FLOWS AND REDUCED CAPEX INTENSITY DRIVING STRONG FREE CASH GENERATION

(1) EBITDA is before exceptional items and after excluding the impact of Ind AS 116 - 'Leases'

(2) Free Cash Flow has been calculated before changes in debt & equity

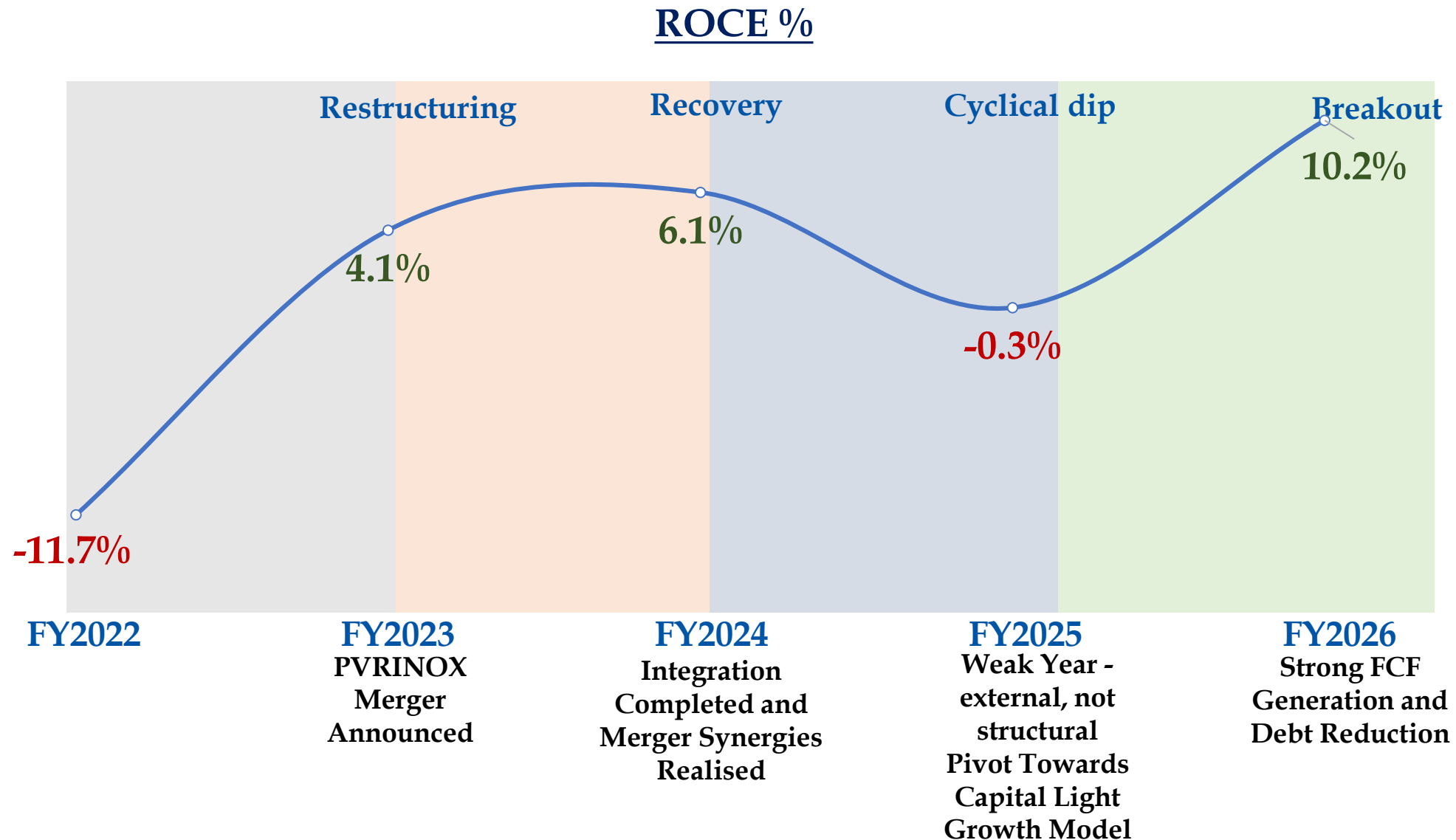
(3) Cash flow of 'Zea Maize Pvt. Ltd.' from 01 Apr 2025 to 28<sup>th</sup> Jan 2026

# Strengthened Balance Sheet Through Debt Reduction



 **Achieved Negligible Net Debt Level**

# Return On Capital Employed Break-Out



Note: Above financial numbers are after excluding the impact of Ind AS 116 - 'Leases' and adjusting for Merger Goodwill. EBIT is excluding the impact of exceptional items

Note: Refer to Annexure 4 for the calculation



ANNEXURES

# Annexure 1: Result Summary (Consol) - Q4, FY'26 vs Q4, FY'25

Particulars (INR Mn)	Q4, FY'26			Q4, FY'25		
	Reported	Ind-AS 116 Impact	Ind-AS 116 Adjusted	Reported	Ind-AS 116 Impact	Ind-AS 116 Adjusted
Total Income	16,239	461	15,778	12,885	259	12,626
Expenses	10,955	-3,127	14,082	9,405	-2,932	12,337
<b>EBITDA</b>	<b>5,284</b>	<b>3,588</b>	<b>1,696</b>	<b>3,480</b>	<b>3,191</b>	<b>289</b>
<b>EBITDA Margin</b>	<b>32.5%</b>		<b>10.7%</b>	<b>27.0%</b>		<b>2.3%</b>
Depreciation & Amortization	3,305	2,046	1,259	3,155	1,945	1,210
<b>EBIT</b>	<b>1,979</b>	<b>1,542</b>	<b>437</b>	<b>325</b>	<b>1,246</b>	<b>-921</b>
Finance Costs	1,730	1,443	287	1,955	1,505	450
Share in net loss of JV	-1		-1	-2		-2
<b>PBT Before Exceptional item</b>	<b>248</b>	<b>99</b>	<b>149</b>	<b>-1,632</b>	<b>-259</b>	<b>-1,373</b>
Exceptional Item <sup>(1)</sup>	-40		-40	0		0
<b>PBT</b>	<b>208</b>	<b>99</b>	<b>109</b>	<b>-1,632</b>	<b>-259</b>	<b>-1,373</b>
Corporate Tax	58	24	34	-424	-65	-359
<b>PAT from continuing operations</b>	<b>150</b>	<b>75</b>	<b>75</b>	<b>-1,208</b>	<b>-194</b>	<b>-1,014</b>
<b>PAT Margin from Continuing operations</b>	<b>0.9%</b>		<b>0.5%</b>	<b>-9.4%</b>		<b>-8.0%</b>
Loss before tax from discontinued operations	-41	1	-42	-45		-45
Exceptional gain on disposal of discontinued operations <sup>(2)</sup>	1,952		1,952			
Tax expense of discontinued operations	197		197			
<b>Profit/(Loss) after exceptional item and tax from discontinued operations</b>	<b>1,714</b>	<b>-1</b>	<b>1,713</b>	<b>-45</b>		<b>-45</b>
<b>Profit/(Loss) for the year</b>	<b>1,864</b>	<b>76</b>	<b>1,788</b>	<b>-1,253</b>	<b>-193</b>	<b>-1,060</b>
<b>PAT Margin</b>	<b>11.5%</b>		<b>11.3%</b>	<b>-9.7%</b>		<b>-8.4%</b>
EPS - Basic (INR) <sup>(3)</sup>	1.53		0.76	-12.30		-10.32
EPS - Diluted (INR) <sup>(3)</sup>	1.55		0.77	-12.30		-10.32

Note: Above financial numbers are after excluding the impact of Ind AS 116 - 'Leases

(1) Exceptional item includes the one-time impact of the New Labour Code (2) Exceptional gain on Sale of Zea Maize(4700 BC) (3) EPS is based on PAT from Continuing Operations

## Annexure 2: Result Summary (Consol) – 12M, FY’26 vs 12M, FY’25

Particulars (INR Mn)	12M, FY’26			12M, FY’25		
	Reported	Ind-AS 116 Impact	Ind-AS 116 Adjusted	Reported	Ind-AS 116 Impact	Ind-AS 116 Adjusted
Total Income	68,297	871	67,426	58,708	790	57,918
Expenses	45,508	-12,238	57,746	41,426	-11,644	53,070
<b>EBITDA</b>	<b>22,789</b>	<b>13,109</b>	<b>9,680</b>	<b>17,282</b>	<b>12,434</b>	<b>4,848</b>
<b>EBITDA Margin</b>	<b>33.4%</b>		<b>14.4%</b>	<b>29.4%</b>		<b>8.4%</b>
Depreciation & Amortization	12,704	8,016	4,688	12,774	7,948	4,826
<b>EBIT</b>	<b>10,085</b>	<b>5,093</b>	<b>4,992</b>	<b>4,508</b>	<b>4,486</b>	<b>22</b>
Finance Costs	7,328	5,821	1,507	8,087	6,207	1,880
Share in net loss of JV	-5		-5	-3		-3
<b>PBT Before Exceptional item</b>	<b>2,752</b>	<b>-728</b>	<b>3,480</b>	<b>-3,582</b>	<b>-1,721</b>	<b>-1,861</b>
Exceptional Item <sup>(1)</sup>	-483		-483	0		0
<b>PBT</b>	<b>2,269</b>	<b>-728</b>	<b>2,997</b>	<b>-3,582</b>	<b>-1,721</b>	<b>-1,861</b>
Corporate Tax	508	-183	691	-934	-433	-501
<b>PAT from continuing operations</b>	<b>1,761</b>	<b>-545</b>	<b>2,306</b>	<b>-2,648</b>	<b>-1,288</b>	<b>-1,360</b>
<i>PAT Margin from Continuing operations</i>	<i>2.6%</i>		<i>3.4%</i>	<i>-4.5%</i>		<i>-2.3%</i>
Loss before tax from discontinued operations	-188	5	-193	-161	2	-163
Exceptional gain on disposal of discontinued operations <sup>(2)</sup>	1,952		1,952			
Tax expense of discontinued operations	197		197			
<b>Profit/(Loss) after exceptional item and tax from discontinued operations</b>	<b>1,567</b>	<b>-5</b>	<b>1,562</b>	<b>-161</b>	<b>-2</b>	<b>-163</b>
<b>Profit/(Loss) for the year</b>	<b>3,328</b>	<b>-540</b>	<b>3,868</b>	<b>-2,809</b>	<b>-1,285</b>	<b>-1,523</b>
<i>PAT Margin</i>	<i>4.9%</i>		<i>5.7%</i>	<i>-4.8%</i>		<i>-2.6%</i>
EPS - Basic (INR) <sup>(3)</sup>	17.93		23.48	-26.97		-13.85
EPS - Diluted (INR) <sup>(3)</sup>	17.86		23.38	-26.97		-13.85

Note: Above financial numbers are after excluding the impact of Ind AS 116 – ‘Leases’

(1) Exceptional item includes the one-time impact of the New Labour Code (2) Exceptional gain on Sale of Zea Maize(4700 BC) (3) EPS is based on PAT from Continuing Operations

## Annexure 3: Balance Sheet

Particulars (INR Mn)	Mar 31, 2026	Mar 31, 2025
<b>Total Shareholder funds</b>	<b>73,787</b>	<b>70,534</b>
Equity Share Capital	982	982
Other Equity	72,805	69,533
Non-Controlling Interest		19
<b>Total Debt</b>	<b>7,586</b>	<b>14,908</b>
Long Term Borrowings	4,592	9,198
Short Term Borrowings	2,994	5,710
Lease Liability	60,205	62,838
Other Non Current Liabilities	1,590	1,576
<b>Total Sources of Funds</b>	<b>1,43,168</b>	<b>1,49,856</b>
Net Fixed Assets Incl. CWIP	30,349	32,665
Goodwill	57,367	57,431
Right of Use assets (ROU)	46,329	49,923
Other Non Current Assets	10,905	11,698
Cash & Cash Equivalents <sup>(1)</sup>	5,967	5,386
Current Assets	5,206	5,521
Less: Current Liabilities	12,955	12,768
Net Current Assets	-7,749	-7,247
<b>Total Assets</b>	<b>1,43,168</b>	<b>1,49,856</b>

(1) Includes Investments, Other Bank balances and Bank deposits (under 'Other Financials Assets')

## Annexure 4: ROCE% Calculation

Particulars (INR Mn)	FY2022 <sup>(1)</sup>	FY2023	FY2024	FY2025	FY2026
Gross Debt (A)	15,915	17,927	17,177	14,908	7,586
INDAS 116 Adjusted Net Worth (B) (Refer Calculation Below)	36,993	82,141	84,173	83,449	87,663
PVRINOX Merger goodwill - (C)		46,338	46,338	46,338	46,338
<b>Total Capital Employed (A)+(B)- ( C)</b>	<b>52,908</b>	<b>53,730</b>	<b>55,012</b>	<b>52,019</b>	<b>48,911</b>
EBIT	-6,205	2,177	3,380	-133	4,992
<b>ROCE % (EBIT / Capital Employed)</b>	<b>-11.7%</b>	<b>4.1%</b>	<b>6.1%</b>	<b>-0.3%</b>	<b>10.2%</b>

Reported Networth (X)	20,619	73,295	73,232	70,534	73,787
ROU Assets	48,131	53,746	54,917	49,923	46,329
Lease Liabilities	64,505	62,592	65,858	62,838	60,205
Net ROU assets (Y)	-16,374	-8,846	-10,941	-12,915	-13,876
<b>INDAS 116 Adjusted Networth (X)-(Y)</b>	<b>36,993</b>	<b>82,141</b>	<b>84,173</b>	<b>83,449</b>	<b>87,663</b>

Note: Above financial numbers are after excluding the impact of Ind AS 116 - 'Leases'. EBIT is excluding the impact of exceptional items

(1) FY2022 is proforma PVR + INOX combined

C O N T E N T



L I N E U P

Content Lineup



**KARUPPU**

**CAST**  
SURIYA SIVAKUMAR,  
TRISHA KRISHNAN,  
INDRANS

**DIRECTOR**  
RJ BALAJI

**TAMIL, KANNADA,  
TELUGU,  
MALAYALAM**

**14<sup>TH</sup> MAY'2026**



**PATI PATNI AUR  
WHO DO**

**CAST**  
AYUSHMANN  
KHURRANA,  
SARA ALI KHAN,  
RAKUL PREET SINGH,  
WAMIQA GABBI

**DIRECTOR**  
MUDASSAR AZIZ

**HINDI**

**15<sup>TH</sup> MAY'2026**



**DRISHYAM 3**

**CAST**  
MOHANLAL,  
MEENA,  
SIDDIQUE

**DIRECTOR**  
JEETHU JOSEPH

**MALAYALAM**

**21<sup>ST</sup> MAY'2026**



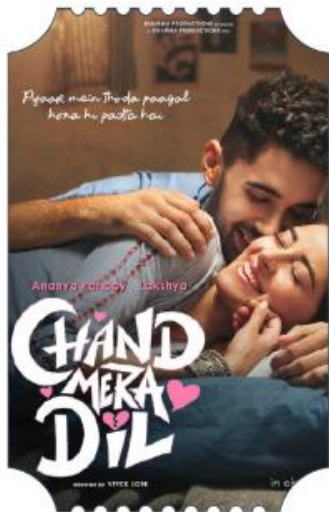
**STAR WARS : THE  
MANDALORIAN  
AND GROGU**  
**3D, IMAX, 4DX, ICE,  
SCREEN-X**

**CAST**  
PEDRO PASCAL,  
JEREMY ALLEN WHITE,  
SIGOURNEY WEAVER

**DIRECTOR**  
JON FAVREAU

**ENGLISH**

**22<sup>ND</sup> MAY'2026**



**CHAND MERA DIL**

**CAST**  
LAKSHYA,  
ANANYA PANDAY

**DIRECTOR**  
VIVEK SONI

**HINDI**

**22<sup>ND</sup> MAY'2026**



**RETURN OF THE  
JUNGLE**

**CAST**  
VOICE ARTISTS

**DIRECTOR**  
VAIBHAV KUMARESH

**HINDI**

**29<sup>TH</sup> MAY'2026**



**PEDDI**  
**4DX, ICE**

**CAST**  
RAM CHARAN,  
DR.SHIVA  
RAJKUMAR,  
JANHVI KAPOOR,

**DIRECTOR**  
BUCHI BABU SANA

**TELUGU, TAMIL,  
MALAYALAM,  
KANNADA, HINDI**

**04<sup>TH</sup> JUN'2026**



**HAI JAWANI TOH  
ISHQ HONA HAI**

**CAST**  
VARUN DHAWAN,  
POOJA HEGDE,  
MRUNAL THAKUR

**DIRECTOR**  
DAVID DHAWAN

**HINDI**

**05<sup>TH</sup> JUN'2026**

Content Lineup



**SCARY MOVIE 6**

**CAST**  
REGINA HALL,  
MARLON WAYANS,  
ANNA FARIS

**DIRECTOR**  
MICHAEL TIDDES

**ENGLISH**

**05<sup>TH</sup> JUN'2026**



**MASTERS OF THE UNIVERSE - 4DX**

**CAST**  
NICHOLAS GALITZINE,  
CAMILA MENDES,  
ALISON BRIE,  
IDRIS ELBA

**DIRECTOR**  
TRAVIS KNIGHT

**ENGLISH, HINDI,  
TAMIL, TELUGU**

**05<sup>TH</sup> JUN'2026**



**LAIKEY LAIKAA**

**CAST**  
RASHA THADANI,  
ABHAY VARMA

**DIRECTOR**  
SAURABH GUPTA

**HINDI**

**05<sup>TH</sup> JUN'2026**



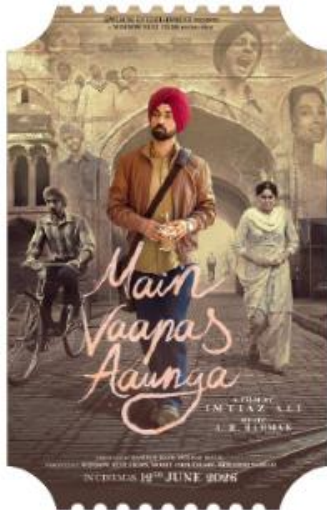
**BANDAR**

**CAST**  
BOBBY DEOL,  
SAPNA PABBI,  
SANYA MALHOTRA,  
SABA AZAD,  
JITENDRA JOSHI

**DIRECTOR**  
ANURAG KASHYAP

**HINDI**

**05<sup>TH</sup> JUN'2026**



**MAIN VAAPAS AAUNGA**

**CAST**  
DILJIT DOSANJH,  
VEDANG RAINA ,  
SHARVARI WAGH,  
NASEERUDDIN SHAH

**DIRECTOR**  
IMTIAZ ALI

**HINDI**

**12<sup>TH</sup> JUN'2026**



**TOY STORY 5  
IMAX, 4DX, ICE**

**CAST**  
TOM HANKS,  
TIM ALLEN,  
JOAN CUSACK

**DIRECTOR**  
ANDREW STANTON

**ENGLISH**

**19<sup>TH</sup> JUN'2026**



**COCKTAIL 2**

**CAST**  
SHAHID KAPOOR,  
RASHMIKA  
MANDANNA,  
KRITI SANON

**DIRECTOR**  
HOMI ADAJANIA

**HINDI**

**19<sup>TH</sup> JUN'2026**



**SUPERGIRL  
WOMAN OF  
TOMORROW  
IMAX, 4DX, ICE**

**CAST**  
MILLY ALCOCK,  
MATTHIAS  
SCHOENAERTS,  
EVE RIDLEY

**DIRECTOR**  
CRAIG GILLESPIE

**ENGLISH**

**26<sup>TH</sup> JUN'2026**

Content Lineup



**WELCOME TO THE JUNGLE**

**CAST**  
AKSHAY KUMAR,  
SUNIEL SHETTY,  
JACKIE SHROFF,  
RAVEENA TANDON,  
DISHA PATANI

**DIRECTOR**  
AHMED KHAN

**HINDI**

**26<sup>TH</sup> JUN'2026**



**CARRY ON JATTA 4**

**CAST**  
GIPPY GREWAL,  
BINNU DHILLON,  
JASWINDER BHALLA

**DIRECTOR**  
SMEEP KANG

**PUNJABI**

**26<sup>TH</sup> JUN'2026**



**LENIN**

**CAST**  
AKHIL AKKINENI,  
BHAGYASHRI BORSE

**DIRECTOR**  
MURALI KISHORE

**TELUGU**

**26<sup>TH</sup> JUN'2026**



**MINIONS AND MONSTERS**

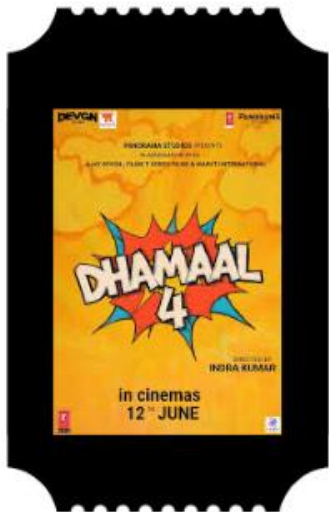
**IMAX, 4DX, ICE, SCREENX**

**CAST**  
PIERRE COFFIN,  
ALLISON JANNEY,  
CHRISTOPH WALTZ

**DIRECTOR**  
PIERRE COFFIN

**ENGLISH**

**02<sup>ND</sup> JUL'2026**



**DHAMAAL 4**

**CAST**  
AJAY DEVGN,  
RITEISH DESHMUKH,  
ARSHAD WARSI,  
SANJAY MISHRA,  
JAAVED JAAFERI

**DIRECTOR**  
INDRA KUMAR

**HINDI**

**03<sup>RD</sup> JUL'2026**



**MOANA**  
**IMAX, 4DX, ICE**

**CAST**  
CATHERINE,  
DWAYNE JOHNSON,  
JOHN TUI

**DIRECTOR**  
THOMAS KAIL

**ENGLISH**

**10<sup>TH</sup> JUL'2026**



**ALPHA**  
**ICE, 4DX**

**CAST**  
ALIA BHATT,  
SHARVARI WAGH,  
ANIL KAPOOR,  
BOBBY DEOL

**DIRECTOR**  
SHIV RAWAIL

**HINDI, TELUGU,  
TAMIL**

**10<sup>TH</sup> JUL'2026**



**THE ODYSSEY**  
**IMAX, 4DX**

**CAST**  
MATT DAMON,  
TOM HOLLAND,  
ANNE HATHAWAY

**DIRECTOR**  
CHRISTOPHER NOLAN

**ENGLISH**

**17<sup>TH</sup> JUL'2026**



**RAFTAAR**  
**CAST**  
 RAJKUMMAR RAO,  
 KEERTHY SURESH  
**DIRECTOR**  
 ADITYA NIMBALKAR  
**HINDI**

**24<sup>TH</sup> JUL'2026**



**SPIDER-MAN: BRAND NEW DAY**  
**3D, 4DX, ICE**  
**CAST**  
 TOM HOLLAND,  
 ZENDAYA,  
 SADIE SINK  
**DIRECTOR**  
 DESTIN DANIEL CRETTON  
**ENGLISH, HINDI,  
 TAMIL, TELUGU**

**31<sup>ST</sup> JUL'2026**



**LAHORE 1947/  
 BATWAARA 1947**  
**CAST**  
 SUNNY DEOL ,  
 PREITY ZINTA ,  
 SHABANA AZMI  
**DIRECTOR**  
 RAJKUMAR SANTOSHI  
**HINDI**

**13<sup>TH</sup> AUG'2026**



**AWARAPAN 2**  
**CAST**  
 EMRAAN HASHMI  
 DISHA PATANI  
**DIRECTOR**  
 NITIN KAKKAR  
**HINDI**

**14<sup>TH</sup> AUG'2026**



**JAILER 2**  
**4DX**  
**CAST**  
 RAJNIKANTH,  
 MOHANLAL,  
 SHIVRAJ KUMAR,  
**DIRECTOR**  
 NELSON  
 DILIPKUMAR  
**TAMI, TELUGU,  
 KANNADA,  
 MALAYALAM, HINDI**

**14<sup>TH</sup> AUG'2026**



**PAW PATROL:  
 THE DINO MOVIE**  
**CAST**  
 MCKENNA GRACE,  
 JAMEELA JAMIL,  
 TERRY CREWS  
**DIRECTOR**  
 CAL BRUNKER  
**ENGLISH**

**28<sup>TH</sup> AUG'2026**



**THE DOG STARS**  
**4DX, SCREEN-X  
 IMAX**  
**CAST**  
 JACOB ELORDI ,  
 JOSH BROLIN,  
 MARGARET  
 QUALLEY  
**DIRECTOR**  
 RIDLEY SCOTT  
**ENGLISH**

**28<sup>TH</sup> AUG'2026**



**KHOSLA KA  
 GHOSLA - 2**  
**CAST**  
 ANUPAN KHER,  
 KIRAN JUNEJA  
 SIPPY,  
 RANVIR SHOREY,  
 TARA SHARMA  
**DIRECTOR**  
 PRASHANT BHAGIA  
**HINDI**

**28<sup>TH</sup> AUG'2026**

Content Lineup



**VVAN - FORCE OF THE FORREST**  
**4DX**

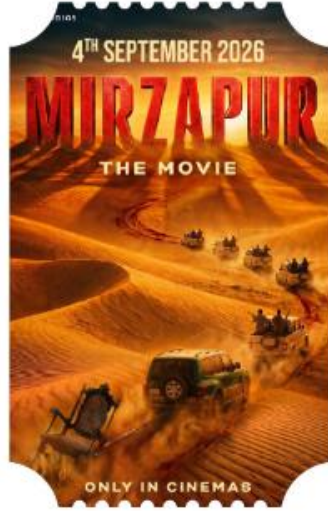
**CAST**  
SIDHARTH MALHOTRA,  
TAMANNAAH BHATIA

**DIRECTOR**  
DEEPAK KUMAR MISHRA

**HINDI**

---

**28<sup>TH</sup> AUG' 2026**



**MIRZAPUR: THE MOVIE**

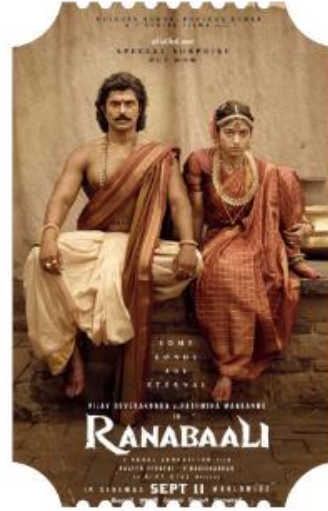
**CAST**  
PANKAJ TRIPATHI,  
ALI FAZAL,  
DIVYENDU,  
ABHISHEK BANERJEE

**DIRECTOR**  
GURMMEET SINGH

**HINDI**

---

**04<sup>TH</sup> SEP' 2026**



**RANABAALI**  
**4DX**

**CAST**  
VIJAY DEVERAKONDA,  
RASHMIKA MANDANNA

**DIRECTOR**  
RAHUL SANKRITYAN

**TELUGU, TAMIL, HINDI, KANNADA, MALAYALAM**

---

**11<sup>TH</sup> SEP' 2026**



**STREET FIGHTER**  
**IMAX, 4DX**

**CAST**  
JASON MOMOA,  
NOAH CENTINEO,  
ANDREW KOJI,  
VIDYUT JAMMAL

**DIRECTOR**  
KITAO SAKURAI

**ENGLISH**

---

**16<sup>TH</sup> OCT' 2026**



**DRISHYAM 3**

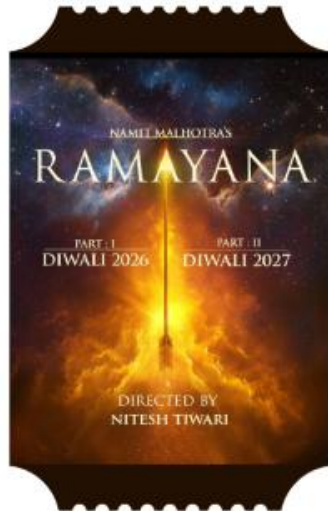
**CAST**  
AJAY DEVGN,  
SHRIYA SARAN,  
TABU,  
ISHITA DUTTA

**DIRECTOR**  
ABHISHEK PATHAK

**HINDI**

---

**02<sup>ND</sup> OCT' 2026**



**RAMAYANA: PART 1 - 4DX**

**CAST**  
RANBIR KAPOOR,  
SAI PALLAVI,  
SUNNY DEOL,  
YASH,  
KAJAL AGARWAL

**DIRECTOR**  
NITESH TIWARI

**HINDI/MULTIPLE**

---

**DIWALI RELEASE**



**RANGER**

**CAST**  
AJAY DEVGN,  
SANJAY DUTT,  
TAMANNAAH BHATIA

**DIRECTOR**  
JAGAN SHAKTI

**HINDI**

---

**04<sup>TH</sup> DEC' 2026**



**AVENGERS: DOOMSDAY**  
**4DX**

**CAST**  
ROBERT DOWNEY JR,  
VENESSA KIRBY,  
FLORENCE PUGH

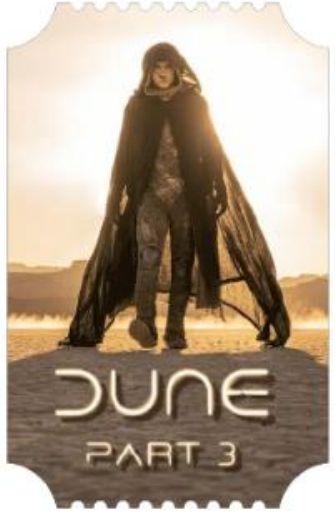
**DIRECTOR**  
ANTHONY RUSSO JOE RUSSO

**ENGLISH, HINDI, TAMIL, TELUGU**

---

**18<sup>TH</sup> DEC' 2026**

Content Lineup



**DUNE : PART THREE - IMAX**

**CAST**  
TIMOTHEE CHALAMET,  
ZENDAYA,  
FLORENCE PUGH,  
JASON MOMOA,  
ROBERT PATTINSON

**DIRECTOR**  
DENIS VILLENEUVE

**ENGLISH**

---

**18<sup>TH</sup> DEC'2026**



**KING**

**CAST**  
SHAHRUKH KHAN,  
SUHANA KHAN,  
ABHISHEK BACHAN,  
ABHAY VERMA

**DIRECTOR**  
SIDDHARTH ANAND

**HINDI**

---

**24<sup>TH</sup> DEC'2026**



**JUMANJI: OPEN WORLD**  
**IMAX, 4DX**

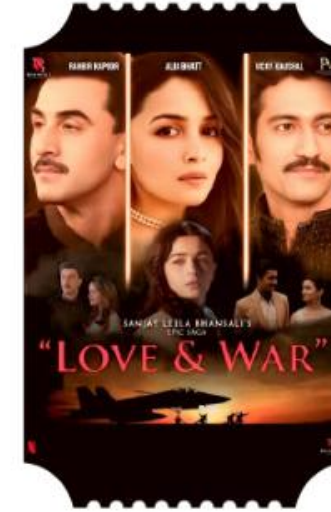
**CAST**  
DWAYNE JOHNSON,  
KAREN GILLAN,  
JACK BLACK

**DIRECTOR**  
JAKE KASDAN

**ENGLISH, HINDI,  
TAMIL, TELUGU**

---

**11<sup>TH</sup> DEC'2026**



**LOVE & WAR**

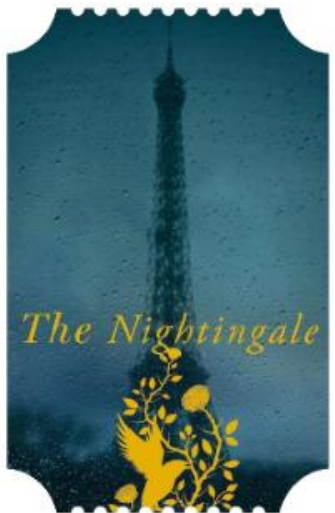
**CAST**  
RANBIR KAPOOR,  
ALIA BHATT,  
VICKY KAUSHAL

**DIRECTOR**  
SANJAY LEELA BHANSALI

**HINDI**

---

**21<sup>ST</sup> JAN'2027**



**THE NIGHTINGALE**

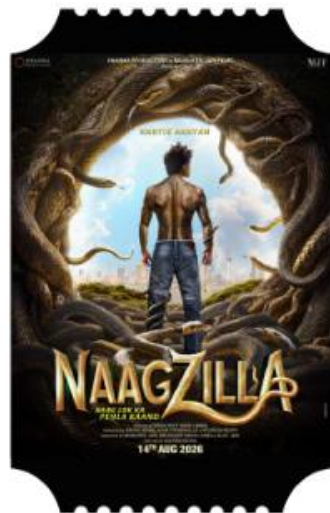
**CAST**  
ELLE FLANNING,  
DAKOTA FANNING,  
EDMUND DONOVAN,  
MARK RYLANCE,  
SHIRA HAAS

**DIRECTOR**  
MICHAEL MORRIS

**ENGLISH**

---

**12<sup>TH</sup> FEB'2026**



**NAAGZILLA**  
**4DX**

**CAST**  
KARTIK AARYAN

**DIRECTOR**  
MRIGHDEEP SINGH LAMBA

**HINDI**

---

**12<sup>TH</sup> FEB'2027**



**SPIRIT**

**CAST**  
PRABHAS,  
TRIPTII DIMRI,  
PRAKASH RAJ

**DIRECTOR**  
SANDEEP REDDY VANGA

**TELUGU**

---

**05<sup>TH</sup> MAR'2027**



**THE THOMAS CROWN AFFAIR**

**CAST**  
MICHAEL B. JORDAN  
ADRIA ARJONA  
KENNETH BRANAGH

**DIRECTOR**  
MICHAEL B. JORDAN

**ENGLISH**

---

**05<sup>TH</sup> MAR'2027**



**THANK  
YOU**