

October 17, 2025

The Manager - Listing

National Stock Exchange of India Limited
(Scrip Symbol: PVRINOX)

The Manager – Listing

BSE Limited
(Scrip Code: 532689)

Sub: 2nd Quarter, FY 2025-26 - Investor Presentation

Dear Sir / Madam,

Please find attached presentation on Investor update for the Second Quarter & first half year ended on 30th September, 2025.

This is for your information and to all concerned.

Yours sincerely,

For **PVR INOX Limited**

MURLEE
MANOHAR JAIN

Digitally signed by
MURLEE MANOHAR JAIN
Date: 2025.10.17
13:59:01 +05'30'

Murlee Manohar Jain
SVP - Company Secretary
& Compliance Officer

Encl: A/a.



PVR ★ INOX
OCTOBER 17th, 2025

INVESTOR UPDATE
Q2 & H1 FY'26

This presentation has been prepared for general information purposes in respect of PVR INOX Limited ("Company") together with its subsidiaries and joint venture (together, with the "Company", the "Group") only, without regard to any specific objectives, suitability, financial situations and needs of any particular person and does not constitute any recommendation or form part of any offer or invitation, directly or indirectly, in any manner, or inducement to sell or issue, or any solicitation of any offer to purchase or subscribe for, any securities of the Company in any jurisdiction, nor shall it or any part of it or the fact of its distribution form the basis of, or be relied on in connection with, any contract or commitment therefor. This presentation does not solicit any action based on the material contained herein. Nothing in this presentation is intended by the Group to be construed as legal, accounting or tax advice.

This presentation has not been approved and will not or may not be reviewed or approved by any statutory or regulatory authority in India or by any Stock Exchange in India.

This presentation contains certain forward-looking statements relating to the business, financial performance, strategy and results of the Group and/ or the industry in which it operates. Forward-looking statements are statements concerning future circumstances and results, and any other statements that are not historical facts, sometimes identified by the words including, without limitation "believes", "expects", "predicts", "intends", "projects", "plans", "estimates", "aims", "foresees", "anticipates", "targets", and similar expressions. The forward-looking statements, including those cited from third party sources, contained in this presentation are based on numerous assumptions and are uncertain and subject to risks. A multitude of factors including, but not limited to, changes in demand, competition and technology, can cause actual events, performance or results to differ significantly from any anticipated development. Neither the Group nor its affiliates or advisors or representatives nor any of its or their parent or subsidiary undertakings or any such person's officers or employees guarantees that the assumptions underlying such forward-looking statements are free from errors nor does either accept any responsibility for the future accuracy of the forward-looking statements contained in this presentation or the actual occurrence of the forecasted developments. Forward-looking statements speak only as of the date of this presentation and are not guarantees of future performance. As a result, the Group expressly disclaims any obligation or undertaking to release any update or revisions to any forward-looking statements in this presentation as a result of any change in expectations or any change in events, conditions, assumptions or circumstances on which these forward looking statements are based. Given these uncertainties and other factors, viewers of this presentation are cautioned not to place undue reliance on these forward-looking statements. Certain numbers in these presentations and materials have been subject to routine rounding off and accordingly figures shown as total in tables and diagrams may not be an arithmetic aggregation of the figures that precede them.

The information contained in these presentations and materials are only current as of the dates specified herein and have not been independently verified. None of the Group, its directors, promoters or affiliates, nor any of its or their respective employees, advisers or representatives or any other person accepts any responsibility or liability whatsoever, whether arising in tort, contract or otherwise, for any errors, omissions or inaccuracies in such information or opinions or for any loss, cost or damage suffered or incurred howsoever arising, directly or indirectly, from any use of this presentation or its contents or otherwise in connection with this presentation, and makes no representation or warranty, express or implied, for the contents of this presentation including its accuracy, fairness, completeness or verification or for any other statement made or purported to be made by any of them, or on behalf of them, and nothing in this presentation or at this presentation shall be relied upon as a promise or representation in this respect, whether as to the past or the future. Past performance is not a guide for future performance. The information contained in this presentation is current, and if not stated otherwise, made as of the date of this presentation. The Group undertakes no obligation to update or revise any information in this presentation as a result of new information, future events or otherwise. Any person/ party intending to provide finance/ invest in the shares/ businesses of the Group shall do so after seeking their own professional advice and after carrying out their own due diligence procedure to ensure that they are making an informed decision.

This presentation is not a prospectus, a statement in lieu of a prospectus, an offering circular, an advertisement or an offer document under the Companies Act, 2013, as amended, the Securities and Exchange Board of India (Issue of Capital and Disclosure Requirements) Regulations, 2018, as amended, or any other applicable law in India.

This presentation is strictly confidential and may not be copied or disseminated, reproduced, re-circulated, re-distributed, published or advertised in any media, website or otherwise, in whole or in part, and in any manner or for any purpose. Any unauthorized use, disclosure or public dissemination of information contained herein is prohibited. No person is authorized to give any information or to make any representation not contained in or inconsistent with this presentation and if given or made, such information or representation must not be relied upon as having been authorized by any person. Failure to comply with this restriction may constitute a violation of the applicable securities laws. Accordingly, any persons in possession of the aforesaid should inform themselves about and observe any such restrictions. By reviewing this presentation, you agree to be bound by the foregoing limitations. You may not repackage or sell the presentation. Information contained in a presentation hosted or promoted by the Group is provided “as is” without warranty of any kind, either expressed or implied, including any warranty of fitness for a particular purpose.

By accessing this presentation, you accept this disclaimer and any claims arising out of or in connection with this presentation shall be governed by the laws of India and only the courts in Gurugram, India, and no other courts shall have jurisdiction over the same.

01	KEY HIGHLIGHTS	5
02	BOX OFFICE UPDATE	8
03	RESULT SUMMARY	15
04	BALANCE SHEET & CASH FLOW	21
05	SCREEN GROWTH UPDATE	24
06	CONTENT PIPELINE	28

KEY FINANCIAL HIGHLIGHTS

PVR INOX

(INR Mn)

REVENUE & GROWTH%

EBITDA & EBITDA%

PAT & PAT %

Q2,FY'26

18,432

+12%

3,273

17.8%

1,265

6.9%

Q2,FY'25

16,419

2,069

12.6%

224

1.4%

H1,FY'26

33,311

+17%

4,414

13.3%

929

2.8%

H1,FY'25

28,505

1,870

6.6%

-1,142

NM

HIGHEST REVENUE, EBITDA & PAT IN LAST 2 YEARS

Note: Above financial numbers are after excluding the impact of Ind AS 116 - 'Leases'

NM : Not Meaningful

INVESTOR UPDATE : Q2 & H1 FY'26

KEY OPERATING HIGHLIGHTS

PVRINOX

ADMITS (Mn)

ATP (INR)

SPH (INR)

Q2,FY'26

Q2,FY'25

44.5

38.8

+15%

262

257

+2%

134

136

-1%

H1,FY'26

H1,FY'25

78.5

69.2

+13%

259

247

+5%

140

135

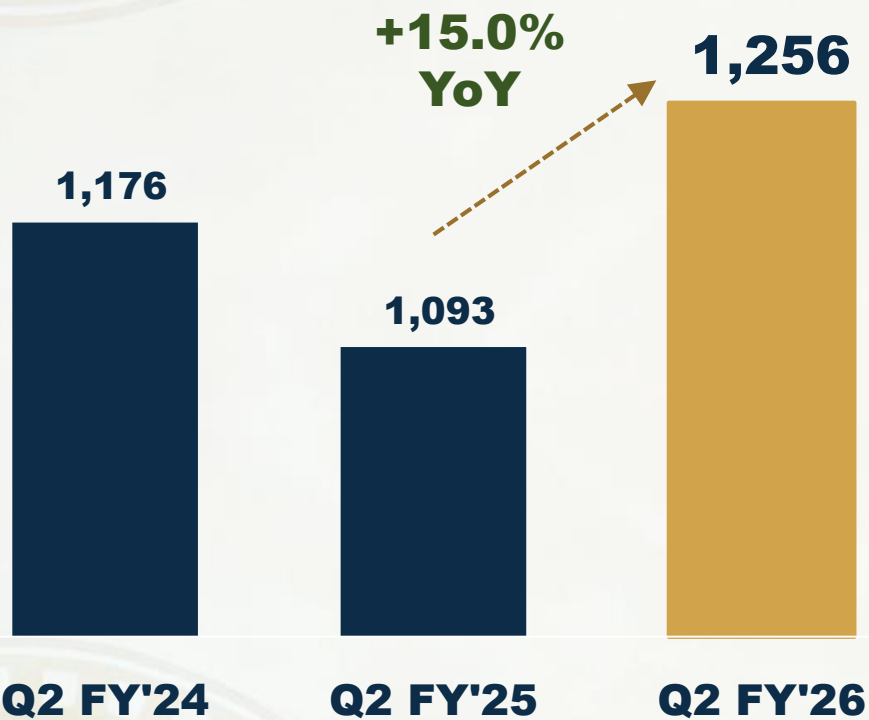
+4%

HIGHEST ADMISSIONS IN LAST 2 YEARS WITH STRONG ATP & SPH

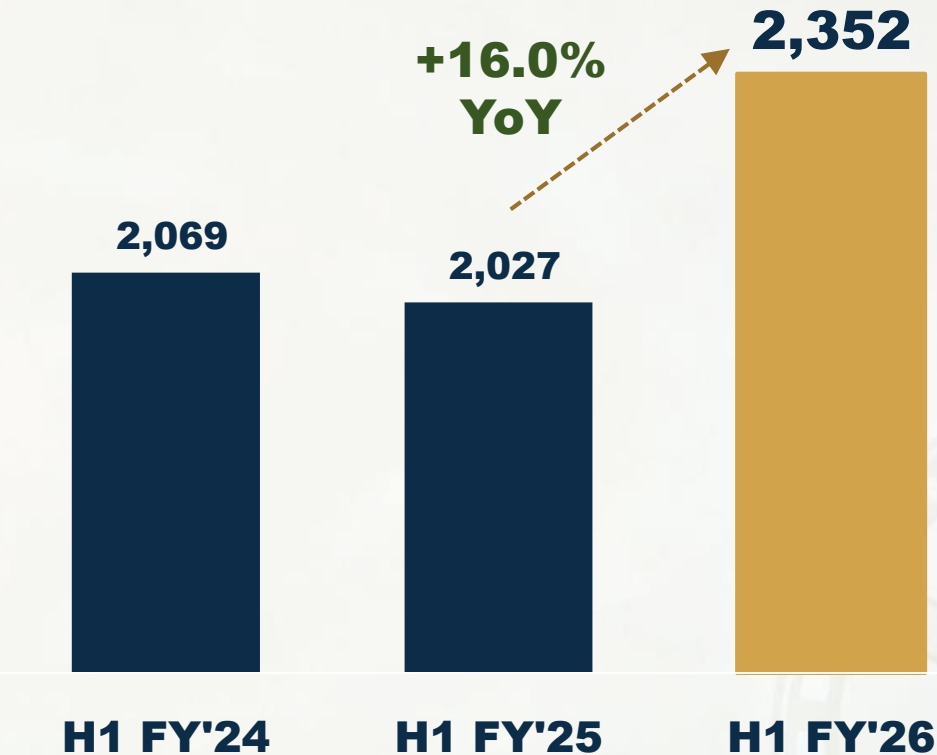
HIGHEST AD REVENUE POST PANDEMIC (Q2 & H1)

(INR Mn)

2nd QUARTER



1st HALF



Increase in Ad Income was Driven by Longer Campaigns due to Blockbuster-led Visibility

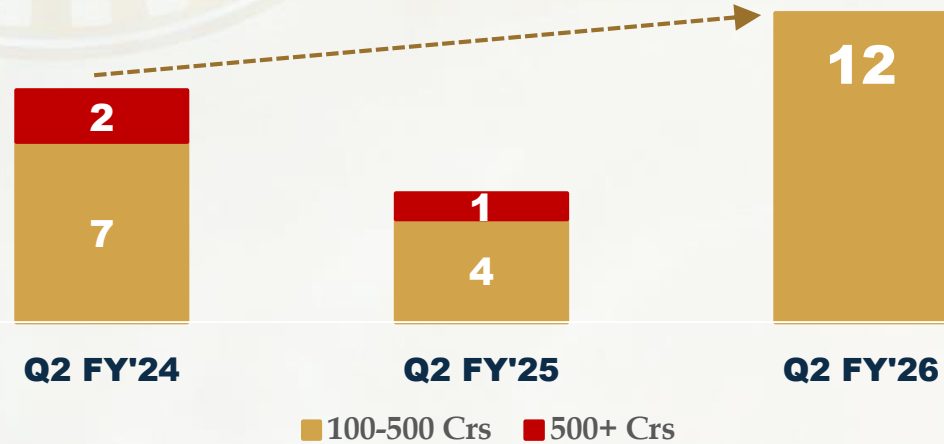


BOX OFFICE UPDATE

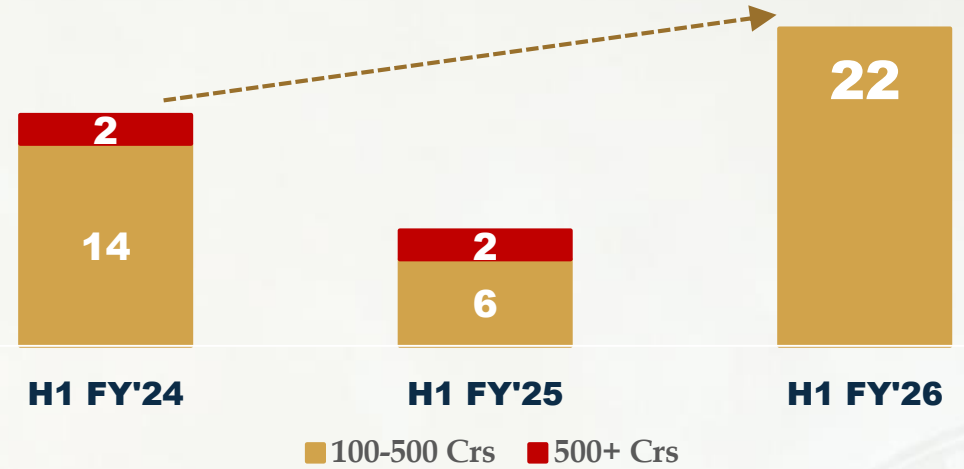
RECORD NUMBER OF 100 CR+ FILMS IN THE 1ST HALF

PVR INOX

NO. OF FILMS >100 Cr. IN Q2 FY'26



NO. OF FILMS >100 Cr. IN H1 FY'26



22 Hits in H1 FY'26 Signal Strong Structural Performance beyond a Few Mega Blockbusters

Success Of Saiyaara, Mahavatar Narsimha, Lokah and Su From So Shows Content, Not Star Power, is Driving Demand

BALANCED MIX DRIVING BOX OFFICE PERFORMANCE

PVR INOX

CATEGORY-WISE SHARE OF FILMS (INDUSTRY GBOC)

■ <100 crs ■ 100-200 crs ■ 200-500 crs ■ >500 crs

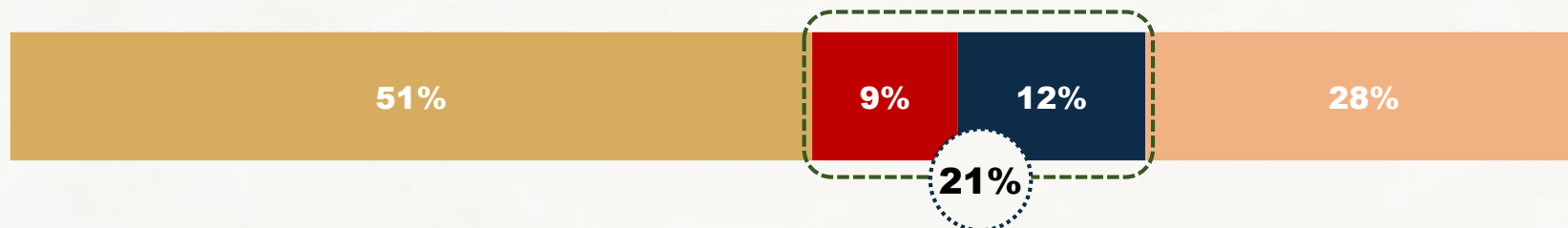
GBOC INR Cr.

**H1
FY'26**



6,241

**H1
FY'25**



5,446

**H1
FY'24**



6,316

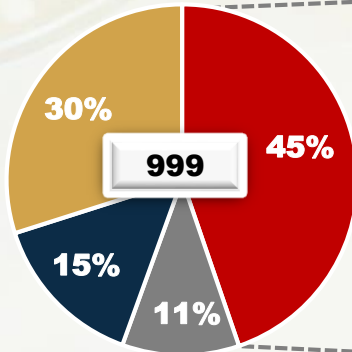
Collections from 100-500 Cr. Films Surged to 59% in H1 FY'26 vs. 21% in H1 FY'25 - Now Acts as a Core Growth Driver

Performance is Less Dependent on 500Cr.+ Mega Blockbusters

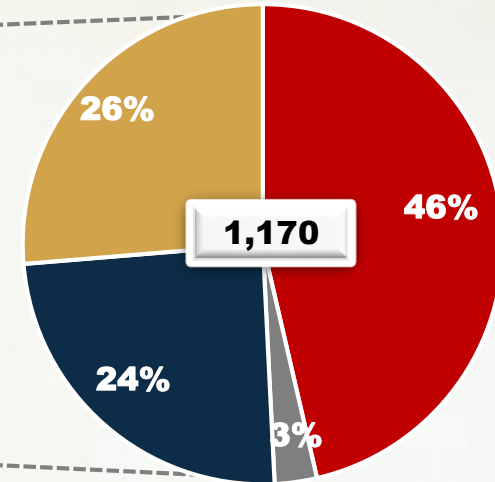
STRONG BOX OFFICE GROWTH ACROSS LANGUAGES

PVRINOX

PVRINOX
GBOC
(INR Cr.)



+17% YoY Growth



Q2 FY'25

■ Hindi ■ Hindi Dubbed ■ English ■ Regional

Q2 FY'26



STREE 2



KALKI 2898 AD



DEADPOOL & WOLVERINE



SAIYAARA



MAHAVATAR NARSIMHA



WAR 2



BAD NEWZ



G.O.A.T. (TAMIL)



DEVARA (TELUGU)



F1 THE MOVIE



COOLIE (TAMIL)



JURASSIC WORLD: REBIRTH

BOLLYWOOD DRIVEN BY CONSISTENT FLOW OF HITS

PVR INOX

PVR INOX HINDI GBOC (INR Crs)

JULY

300 Cr.+



SAIYAARA

147 | 399

300 Cr.+



MAHAVATAR NARSIMHA (All Languages)

114 | 301

AUGUST

200 Cr.+



WAR 2 (All Languages)

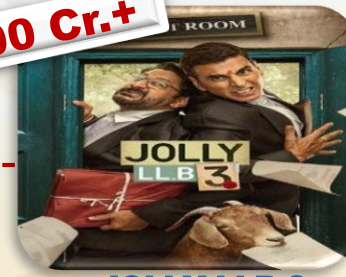
84 | 283



PARAM SUNDARI

29 | 62

100 Cr.+



JOLLY LLB 3

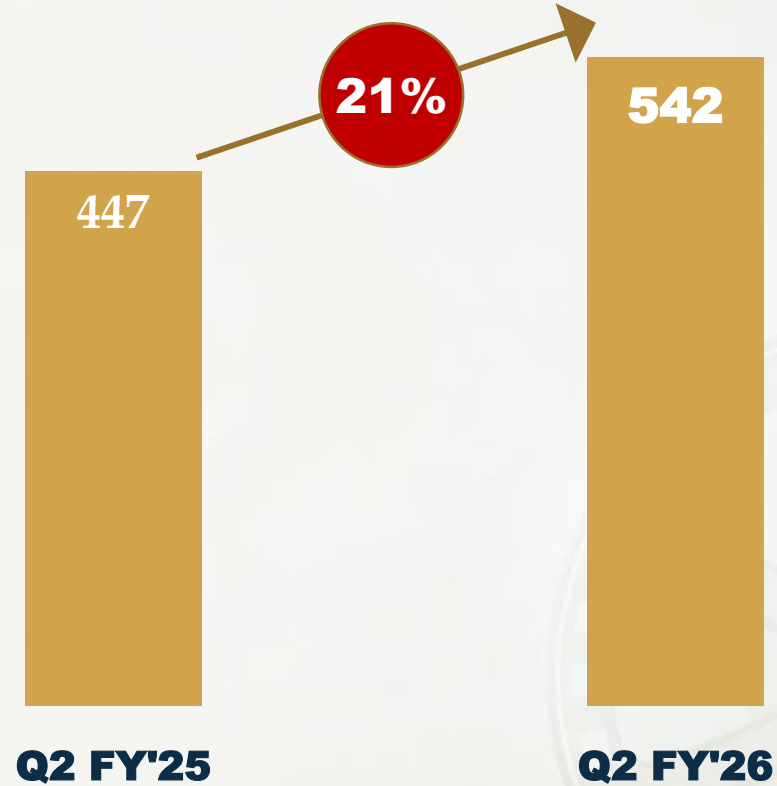
63 | 135



BAAGHI 4

23 | 65

SEPTEMBER



Strong Content Takes Precedence Over Presence of Superstars

PVR INOX GBOC | India GBOC (INR Crs)

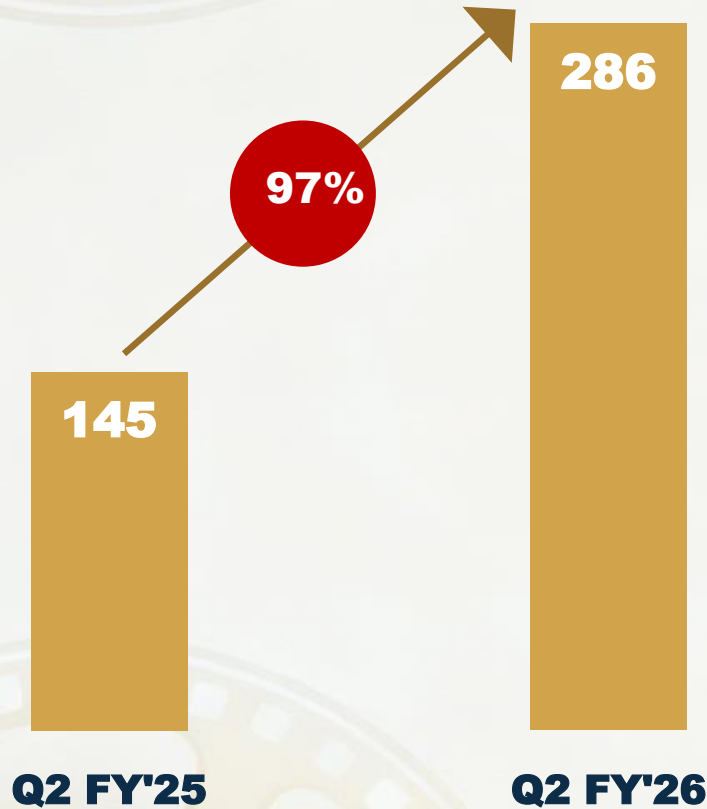
Hindi + Hindi Dubbed GBOC for PVR INOX increased by 4% from INR 555 crs to INR 576 crs

Life time Box Office collections have been considered

SUSTAINED OUTPERFORMANCE BY HOLLYWOOD

PVR INOX

PVR INOX HOLLYWOOD GBOC (INR Crs)



PVR INOX GBOC | India GBOC (INR Crs)



F1 : THE MOVIE ⁽¹⁾

85 | 128



JURASSIC WORLD: REBIRTH

56 | 125



THE CONJURING: LAST RITES

49 | 101



DEMON SLAYER KIMETSU NO YAIBA INFINITY CASTLE

43 | 87



SUPERMAN

34 | 61



THE FANTASTIC FOUR: FIRST STEPS

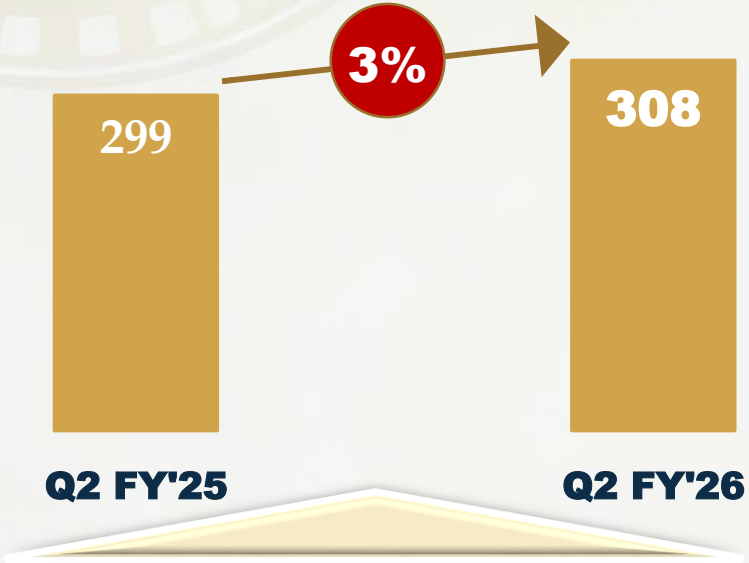
26 | 47

Successful Franchisee Titles Drive Hollywood Box Office

REGIONAL FILMS DELIVER A STEADY PERFORMANCE



PVR INOX REGIONAL GBOC (INR Crs)



COOLIE (TAMIL)

58 | 338



THEY CALL HIM OG (TELUGU)

24 | 223

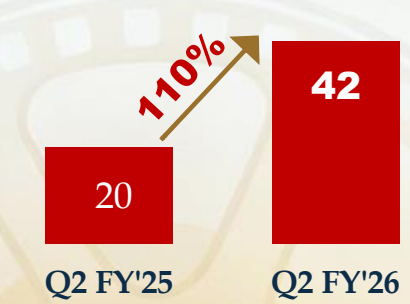


MIRAI (TELUGU)

21 | 111

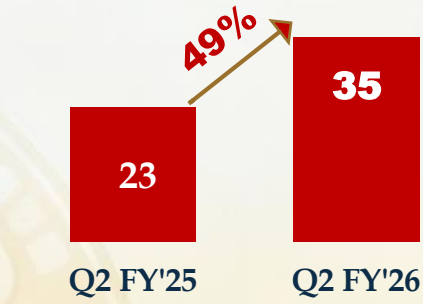
KANNADA AND MALAYALAM OUTPERFORM

KANNADA (INR Cr)

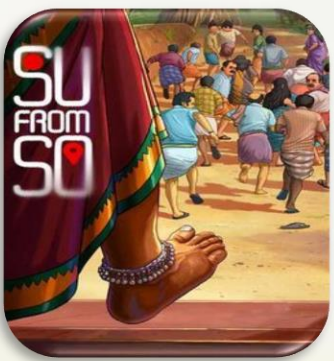


'Su from So' contributed 72%

MALAYALAM (INR Cr)



'Lokah Chapter 1' contributed 61%



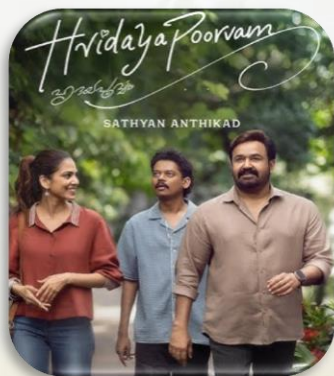
SU FROM SO (KANNADA)

32 | 108



LOKAH CHAPTER 1 (MALAYALAM)

33 | 181



HRIDYAPOORVAM (MALAYALAM)

5 | 46

PVR INOX GBOC | India GBOC (INR Crs)

Life time Box Office collections in all languages have been considered
Source : Ormax Media, Sacnilk, Company estimates



RESULT SUMMARY

RESULT SUMMARY (CONSOL) – Q2, FY'26 vs Q2, FY'25

Particulars (INR Mn)	Q2, FY'26			Q2, FY'25		
	Reported	Ind-AS 116 Impact	Ind-AS 116 Adjusted	Reported	Ind-AS 116 Impact	Ind-AS 116 Adjusted
Total Income	18,589	157	18,432	16,639	220	16,419
Expenses	12,113	-3,046	15,159	11,428	-2,922	14,350
EBITDA	6,476	3,203	3,273	5,211	3,142	2,069
EBITDA Margin	34.8%		17.8%	31.3%		12.6%
Depreciation & Amortization	3,167	2,010	1,157	3,294	2,028	1,266
EBIT	3,309	1,193	2,116	1,917	1,114	803
Finance Costs	1,883	1,473	410	2,064	1,575	489
Share in net loss of JV	-2		-2	0		0
PBT	1,424	-280	1,704	-147	-461	314
Corporate Tax	369	-70	439	-26	-116	90
PAT	1,055	-210	1,265	-121	-345	224
PAT Margin	5.7%		6.9%	-0.7%		1.4%
EPS - Basic (INR)	10.78		12.92	-1.20		2.22
EPS - Diluted (INR)	10.73		12.87	-1.20		2.22

RESULT SUMMARY (CONSOL) – H1, FY'26 vs H1, FY'25

Particulars (INR Mn)	H1, FY'26			H1, FY'25		
	Reported	Ind-AS 116 Impact	Ind-AS 116 Adjusted	Reported	Ind-AS 116 Impact	Ind-AS 116 Adjusted
Total Income	33,604	293	33,311	28,833	328	28,505
Expenses	22,831	-6,066	28,897	20,820	-5,815	26,635
EBITDA	10,773	6,359	4,414	8,013	6,143	1,870
EBITDA Margin	32.1%		13.3%	27.8%		6.6%
Depreciation & Amortization	6,252	3,972	2,280	6,436	4,006	2,430
EBIT	4,521	2,387	2,134	1,577	2,137	-560
Finance Costs	3,797	2,947	850	4,105	3,165	940
Share in net loss of JV	-3		-3	-0		-0
PBT	721	-560	1,281	-2,528	-1,028	-1,500
Corporate Tax	211	-141	352	-617	-259	-358
PAT	510	-419	929	-1,911	-769	-1,142
PAT Margin	1.5%		2.8%	-6.6%		-4.0%
EPS - Basic (INR)	5.26		9.59	-19.41		-11.60
EPS - Diluted (INR)	5.24		9.55	-19.41		-11.60

KEY OPERATING NUMBERS

Particulars	Units	Q2, FY'26			Q2, FY'25			H1, FY'26			H1, FY'25		
<u>Operating Numbers</u>		Reported (A)	Reported (B)	YoY Change (%) (A / B-1)	Reported (A)	Reported (B)	YoY Change (%) (A / B-1)	Reported (A)	Reported (B)	YoY Change (%) (A / B-1)	Reported (A)	Reported (B)	YoY Change (%) (A / B-1)
Cinema Count <i>(at the end of period)</i> ⁽¹⁾		353	356	-0.8%				353	356	-0.8%			
Screen Count <i>(at the end of period)</i> ⁽¹⁾		1,757	1,745	0.7%				1,757	1,745	0.7%			
Weighted Average Screens ⁽²⁾		1,700	1,708	-0.4%				1,695	1,705	-0.6%			
Admits	Mns	44.5	38.8	14.7%				78.5	69.2	13.5%			
Occupancy	%	28.7%	25.7%	302 bps				25.4%	23.0%	243 bps			
Avg. Ticket Price (ATP)	INR	262	257	1.9%				259	247	4.6%			
F&B Spend per Head (SPH)	INR	134	136	-1.4%				140	135	3.6%			

(1) Includes 58 management screens across 15 cinemas which are managed under a 'Management fee' model. The above table excludes Operating KPIs of management properties

(2) Weighted average screens has been calculated basis the actual no. of days of operations of each cinema during the period, excluding 58 management screens across 15 cinemas

REVENUE ANALYSIS

Particulars (INR Mn)	Q2, FY'26			Q2, FY'25			H1, FY'26			H1, FY'25		
Weighted Average Screens ⁽¹⁾	1700			1,708		-0.4%	1,695			1,705		-0.6%
<u>Financials</u>	<i>Reported</i>			<i>Reported</i>		<i>YoY Change (%)</i>	<i>Reported</i>			<i>Reported</i>		<i>YoY Change (%)</i>
	(A)			(B)		(A / B-1)	(A)			(B)		(A / B-1)
Sale of Movie Tickets	9,834			8,376		17.4%	17,060			14,311		19.2%
Sale of Food & Beverages	5,882			5,232		12.4%	10,856			9,250		17.4%
Advertisement Income	1,256			1,093		14.9%	2,352			2,027		16.0%
Convenience Fees	676			650		4.0%	1,157			1,088		6.3%
Other Operating Income	582			870		-33.1%	1,496			1,452		3.0%
Other Income	202			198		2.0%	390			377		3.4%
Total Income	18,432			16,419		12.3%	33,311			28,505		16.9%

Consolidated Financials

(1) Weighted average screens has been calculated basis the actual no. of days of operations of each cinema during the period, excluding 58 management screens across 15 cinemas

(2) Decrease in Other operating income due to:

➤ Decrease in Income from Film Distribution from INR 603 mn in Q2 FY'25 (Stree 2) to INR 318 mn in Q2 FY'26 (Son of Sardaar 2).

EXPENSE ANALYSIS – CONSOLIDATED

Particulars (INR Mn)	Q2, FY'26			Q2, FY'25			H1, FY'26			H1, FY'25		
Weighted Average Screens ⁽¹⁾	1,700			1,708			1,695			1,705		
Variable Cost	Reported (A)	Reported (B)	YoY Change (%) (A/B-1)	Reported (A)	Reported (B)	YoY Change (%) (A/B-1)	Reported (A)	Reported (B)	YoY Change (%) (A/B-1)	Reported (A)	Reported (B)	YoY Change (%) (A/B-1)
FHC (%)	45.5%	44.9%	58 bps	45.5%	44.9%	58 bps	45.7%	44.4%	128 bps	45.7%	44.4%	128 bps
COGS (%)	21.7%	25.0%	-336 bps	21.7%	25.0%	-336 bps	22.5%	24.8%	-235 bps	22.5%	24.8%	-235 bps
Fixed Cost												
Rent	3,282	3,128	4.9%	3,282	3,128	4.9%	6,462	6,157	5.0%	6,462	6,157	5.0%
CAM	932	909	2.5%	932	909	2.5%	1,859	1,800	3.3%	1,859	1,800	3.3%
Personnel	1,926	1,773	8.6%	1,926	1,773	8.6%	3,652	3,416	6.9%	3,652	3,416	6.9%
Electricity & Water / Utilities	1,050	1,092	-3.8%	1,050	1,092	-3.8%	2,073	2,158	-3.9%	2,073	2,158	-3.9%
Other Expenses ex Movie Dist., Print	1,984	1,884	5.3%	1,984	1,884	5.3%	3,772	3,663	3.0%	3,772	3,663	3.0%
Total Fixed Expenses ex Movie Dist.	9,174	8,786	4.4%	9,174	8,786	4.4%	17,818	17,194	3.6%	17,818	17,194	3.6%
Movie Dist., Print charges ⁽²⁾	429	977	-56.1%	429	977	-56.1%	1,523	1,398	8.9%	1,523	1,398	8.9%
Total Fixed Expenses incl. Movie Dist.	9,603	9,763	-1.6%	9,603	9,763	-1.6%	19,341	18,592	4.0%	19,341	18,592	4.0%

Consolidated Financials

(1) Weighted average screens has been calculated basis the actual no. of days of operations of each cinema during the period, excluding 58 management screens across 15 cinemas

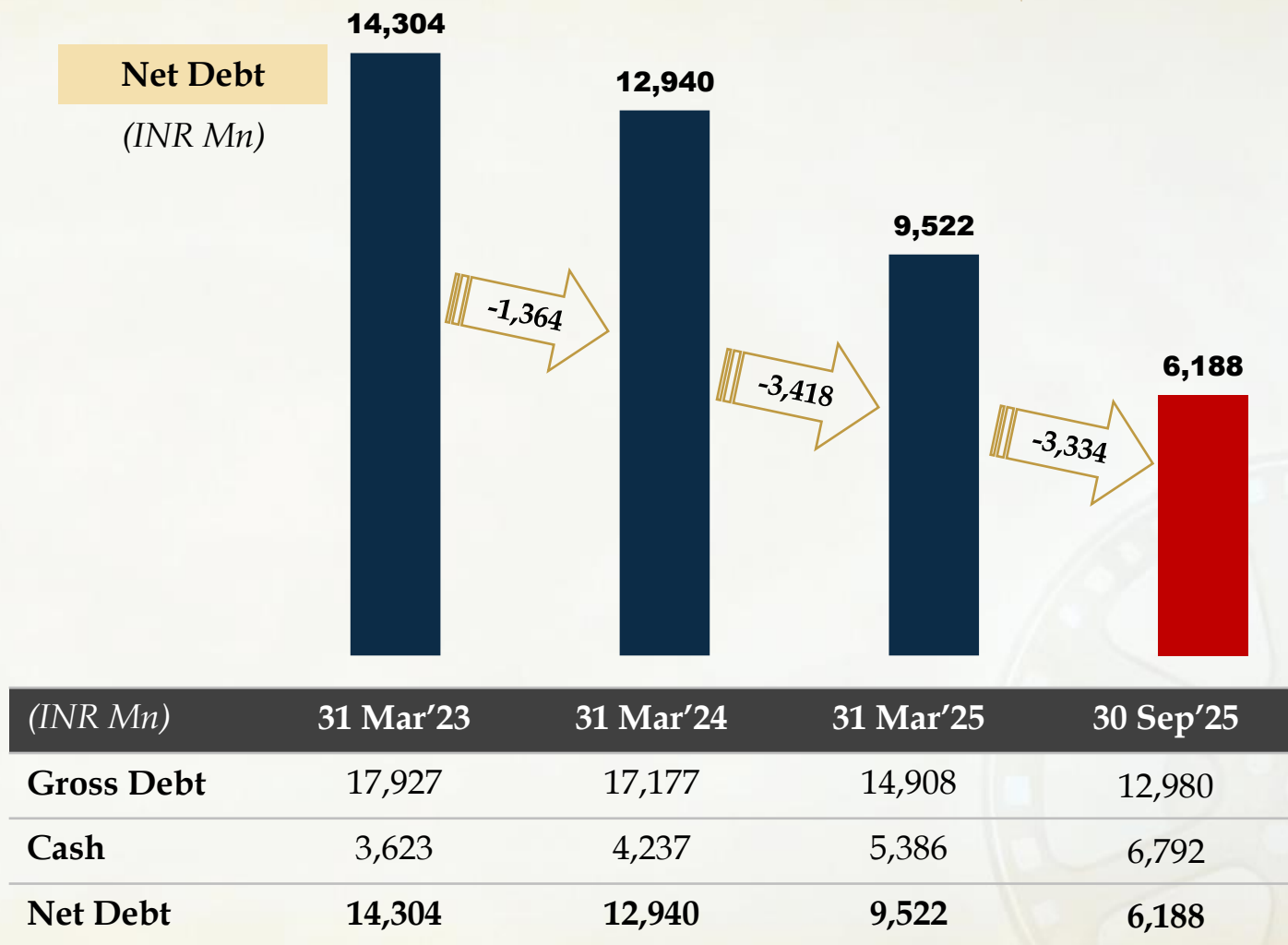
(2) Expenses relating to Distribution of movies



BALANCE SHEET & CASH FLOW

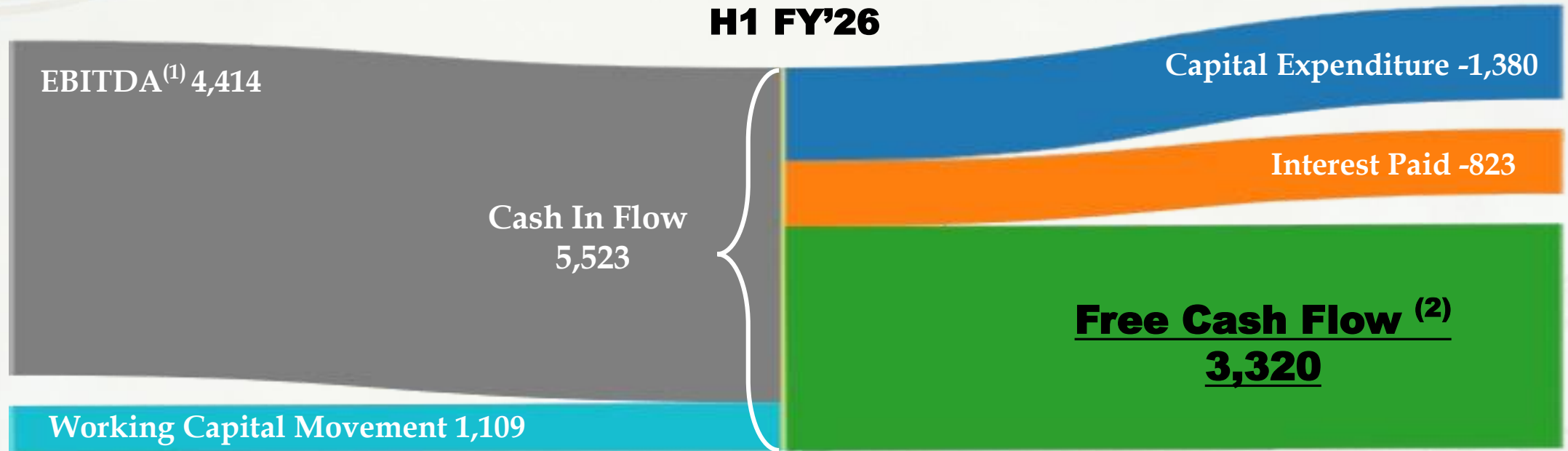
BALANCE SHEET & DEBT REDUCTION

	Consolidated	
Particulars (INR Mn)	30 Sep 2025	31 March, 2025
Total Shareholder funds	71,068	70,534
Equity Share Capital	982	982
Other Equity	70,066	69,533
Non-Controlling Interest	20	19
Total Debt	12,980	14,908
Long Term Borrowings	8,573	9,198
Short Term Borrowings	4,407	5,710
Lease Liability	61,682	62,838
Other Non Current Liabilities	1,749	1,576
Total Sources of Funds	1,47,479	1,49,856
Net Fixed Assets Incl. CWIP	31,722	32,665
Goodwill	57,431	57,431
Right of Use assets (ROU)	48,134	49,923
Other Non Current Assets	11,509	11,698
Cash & Cash Equivalents ⁽¹⁾	6,792	5,386
Current Assets	5,350	5,521
Less: Current Liabilities	13,459	12,768
Net Current Assets	-8,109	-7,247
Total Assets	1,47,479	1,49,856



NET DEBT POST MERGER HAS REDUCED BY MORE THAN HALF

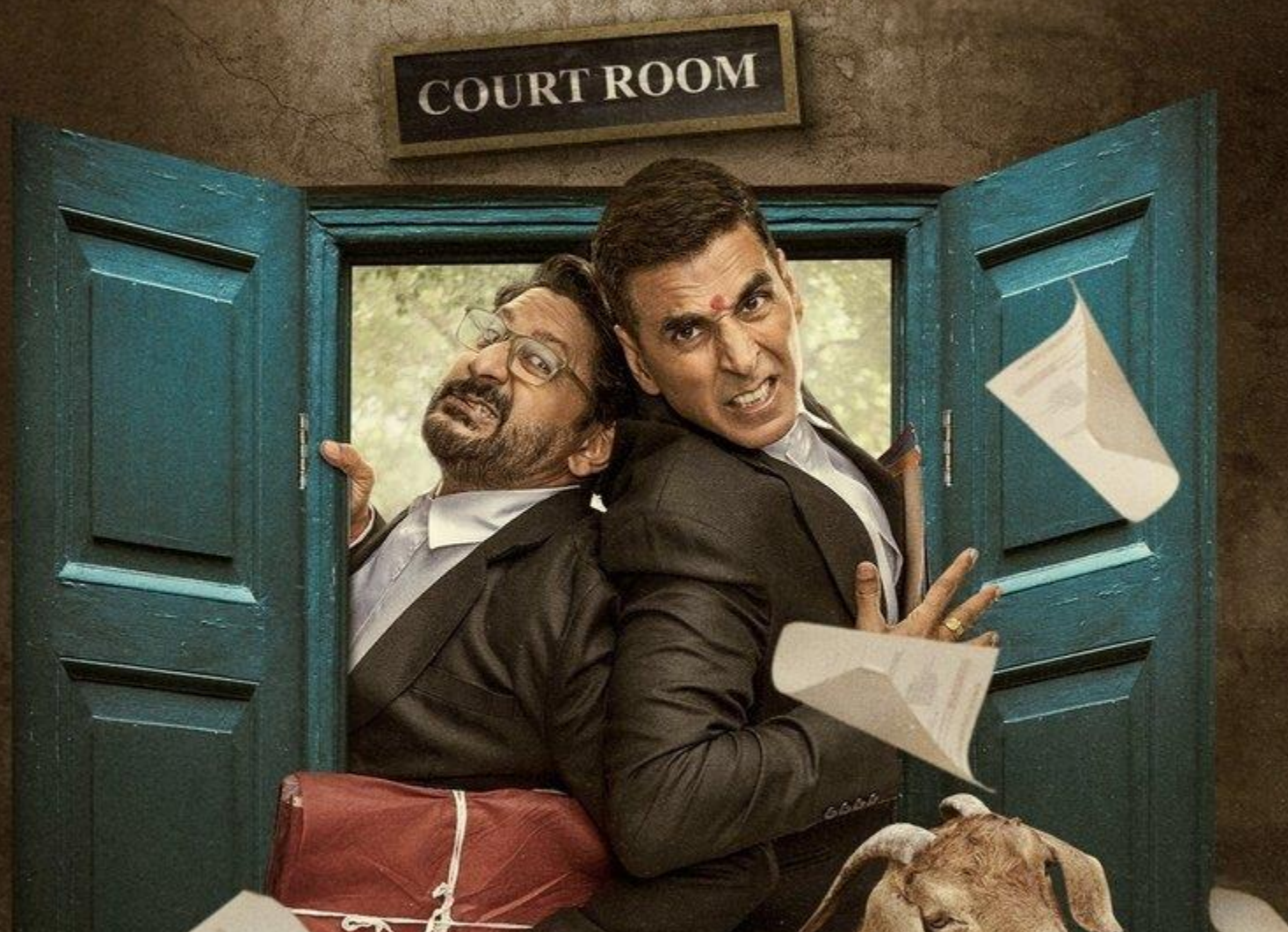
(1) Includes Investments, Other Bank balances and Bank deposits (under 'Other Financials Assets')



Robust operating cash flows and reduced capex intensity driving strong free cash generation

(1) Pre-IndAS 116 EBITDA

(2) Free Cash Flow has been calculated before changes in debt & equity



SCREEN GROWTH UPDATE

SCREEN GROWTH UPDATE – H1 FY’26

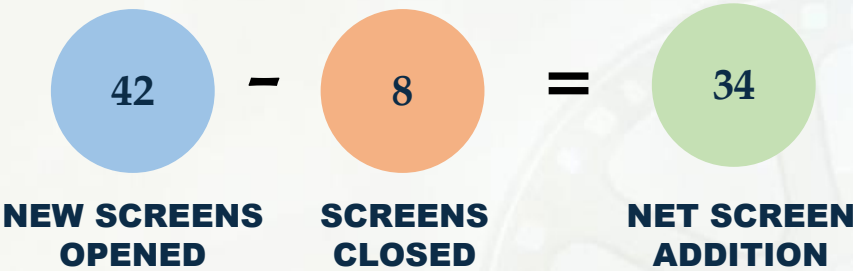
#	CINEMAS OPENED IN Q1 FY’26	MODEL	OPENING DATE	SCREENS
1.	PVR ELAN MIRACLE 84, GURGAON	LEASE	25-APR-25	6
2.	PVR ZORA MALL, RAIPUR	FOCO	25-APR-25	5
3.	PVR KA MALL, JABALPUR	FOCO	30-APR-25	4
	PVR DIRECTOR'S CUT, MALL OF INDIA, NOIDA ⁽¹⁾	ASSET LIGHT	2-MAY-25	5
NEW SCREENS OPENED IN Q1 FY’26				20

(1) 5 DIRECTOR’S CUT SCREENS WERE ADDED TO OUR EXISTING CINEMA IN MALL OF INDIA, NOIDA

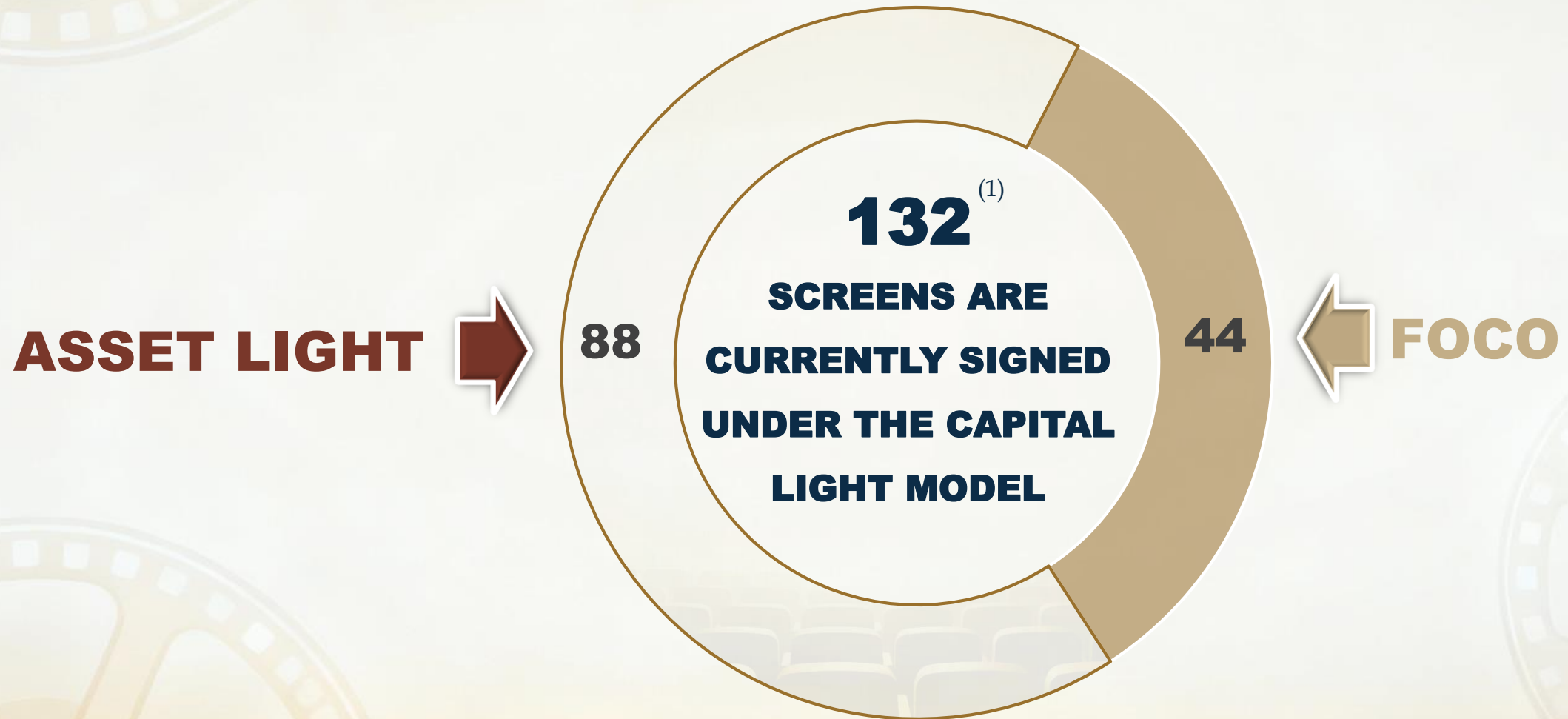
#	CINEMAS OPENED IN Q2 FY’26	MODEL	OPENING DATE	SCREENS
4.	INOX SMR VINAY METRO MALL, HYDERABAD	LEASE	4-JUL-25	4
5.	INOX OBEROI SKY CITY, BORIVALI, MUMBAI	LEASE	14-AUG-25	10
6.	INOX M5 E-CITY, BENGALURU	LEASE	15-AUG-25	8
NEW SCREENS OPENED IN Q2 FY’26				22

4 SCREEN FOCO CINEMA WAS OPENED IN ML ACROPOLIS MALL, SILIGURI, WEST BENGAL ON 15th OCTOBER 2025

NET SCREEN ADDITION – H1 FY’26



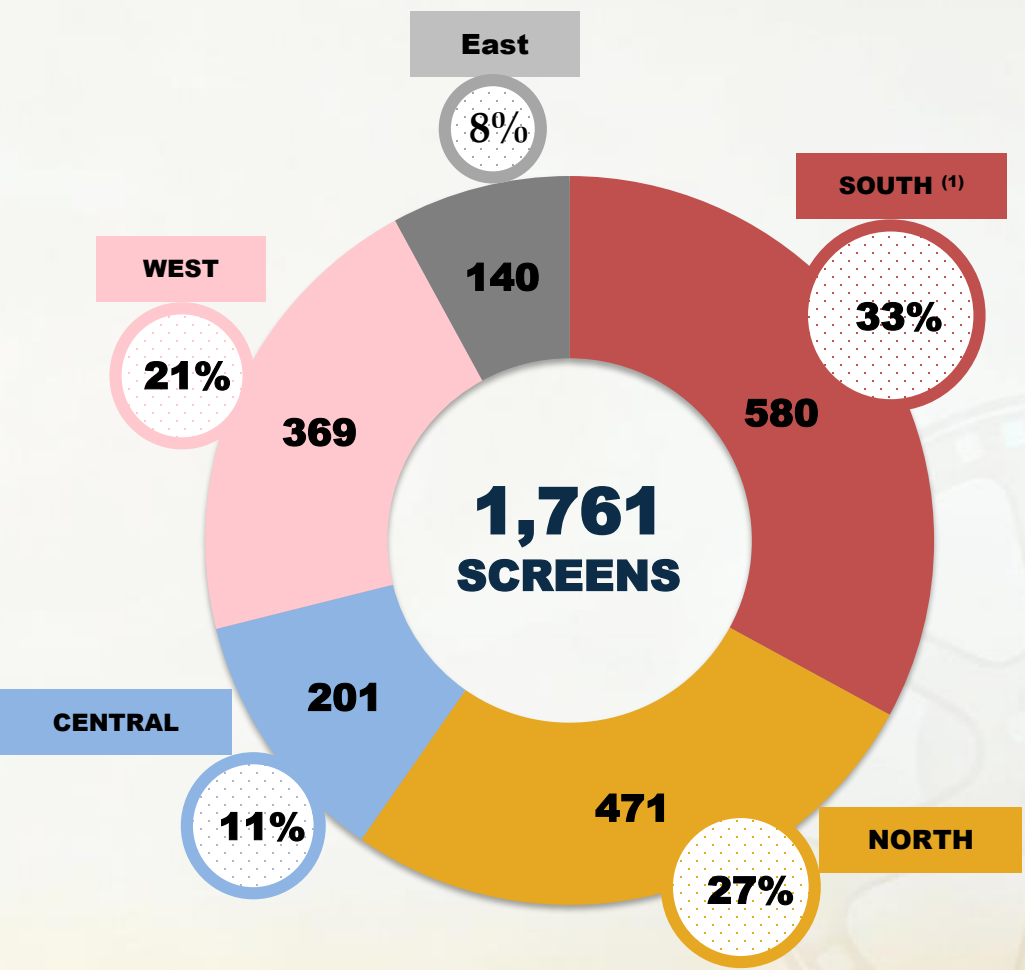
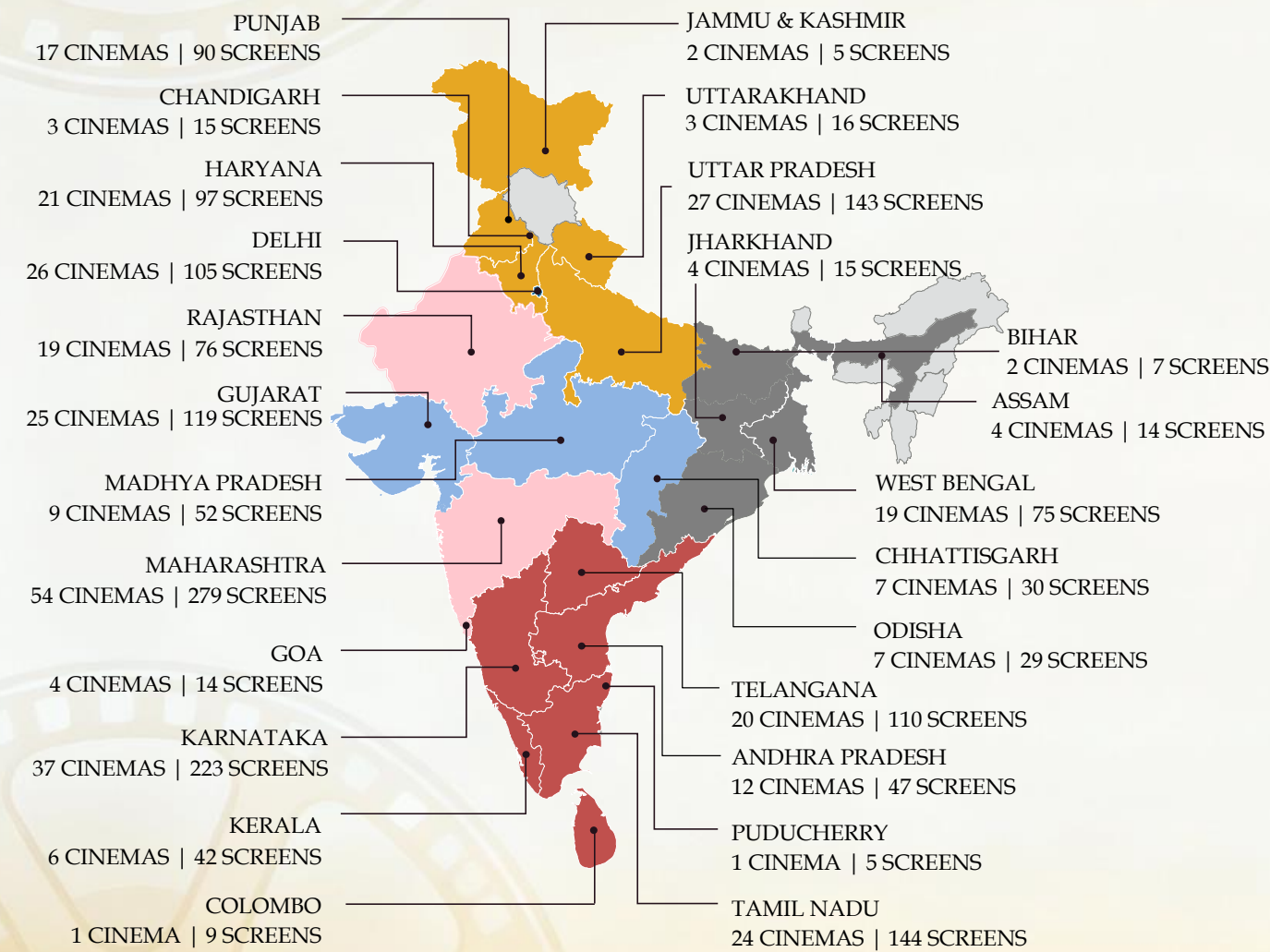
ON TRACK TO OPEN ~100 NEW SCREENS IN FY’26



(1) AS ON DATE: 4 SCREEN FOCO CINEMA WAS OPENED IN ML ACROPOLIS MALL, SILIGURI, WEST BENGAL ON 15th OCTOBER 2025

DIVERSIFIED NETWORK OF 1,761 SCREENS IN 111 CITIES

PVRINOX



SCREEN PORTFOLIO AS ON DATE: 4 SCREEN FOCO CINEMA WAS OPENED IN ML ACROPOLIS MALL, SILIGURI, WEST BENGAL ON 15TH OCTOBER 2025
INCLUDES 16 MANAGEMENT PROPERTIES WITH 62 SCREENS
MAP NOT TO SCALE
(1) SOUTH INCLUDES SRI LANKA



CONTENT LINEUP



THE BLACK PHONE 2

CAST
ETHAN HAWKE,
MASON THAMES,
JEREMY DAVIES

DIRECTOR
SCOTT DERRICKSON

ENGLISH

17TH OCT'2025



THAMA

CAST
AYUSHMANN
KHURRANA,
RASHMIKA
MANDANNA,
NAWAZUDDIN
SIDDIQUI,
PARESH RAWAL

DIRECTOR
ADITYA SARPOTDAR

HINDI

21ST OCT'2025



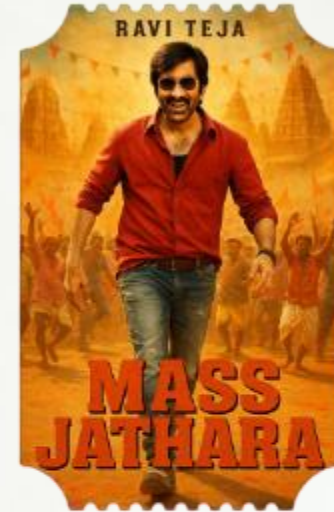
EK DEEWANE KI DEEWANIYAT

CAST
HARSHVARDHAN
RANE,
SONAM BAJWA

DIRECTOR
MILAP ZAVERI

HINDI

21ST OCT'2025



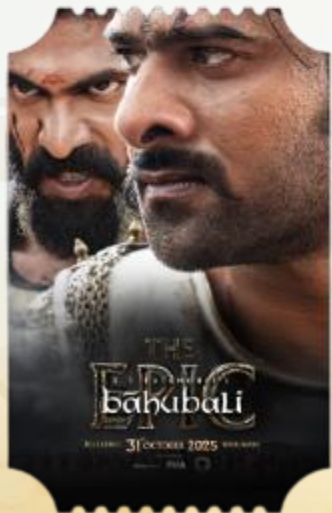
MASS JATHARA

CAST
RAVI TEJA,
SREE LEELA

DIRECTOR
BHANU BOGAVARAPU

TELUGU

31ST OCT'2025



BAAHUBALI THE EPIC IMAX

CAST
PRABHAS,
TAMANNAH BHATIA,
ANUSHKA SHETTY,
RANA DAGGUBATI

DIRECTOR
S.S RAJAMOULI

TELUGU, TAMIL,
HINDI

31ST OCT'2025



VRUSSHABHA

CAST
MOHANLAL,
SAMARJIT LANKESH,
NAYAN SARIKA,
RAGIINI DWIVEDI

DIRECTOR
NANDA KISHORE

MALAYALAM,
TAMIL, TELUGU,
HINDI

06TH NOV'2025



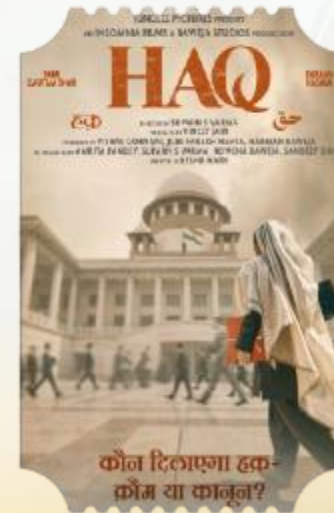
PREDATOR : BADLANDS IMAX, 4DX, SCREEN-X, ICE

CAST
ELLE FANNING,
DIMITRIUS
SCHUSTER -
KOLDAMATANGI

DIRECTOR
DAN TRACHTENBERG

ENGLISH

07TH NOV'2025



HAQ

CAST
YAMI GAUTAM,
EMRAAN HASHMI,
VARTIKA SINGH,
DANISH HUSSAIN

DIRECTOR
SUPARN VARMA

HINDI

07TH NOV'2025



NOW YOU SEE ME: NOW YOU DON'T

CAST
JESSE EISENBERG,
WOODY HARRELSON,
ROSAMUND PIKE,
MORGAN FREEMAN

DIRECTOR
RUBEN FLEISCHER

ENGLISH

14TH NOV'2025



THE RUNNING MAN
IMAX, 4DX

CAST
GLEN POWELL,
KATY O'BRIAN,
DANIEL EZRA

DIRECTOR
EDGAR WRIGHT

ENGLISH

14TH NOV'2025



DE DE PYAAR DE 2

CAST
AJAY DEVGN,
RAKUL PREET SINGH,
R MADHAVAN

DIRECTOR
ANSHUL SHARMA

HINDI

14TH NOV'2025



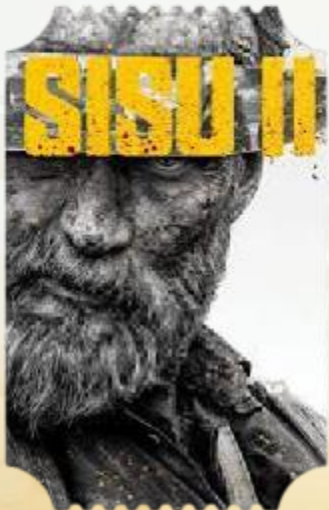
WICKED : FOR GOOD
IMAX, 4DX, SCREEN X

CAST
JONATHAN BAILEY,
JEFF GOLDBLUM,
ARIANA GRANDE

DIRECTOR
JON M CHU

ENGLISH

21ST NOV'2025



SISU SEQUEL

CAST
STEPHEN LANG,
RICHARD BRAKE,
JORMA TOMMILA

DIRECTOR
JALMARI HELANDER

**ENGLISH ,
HINDI,TAMIL,
TELUGU**

21ST NOV'2025



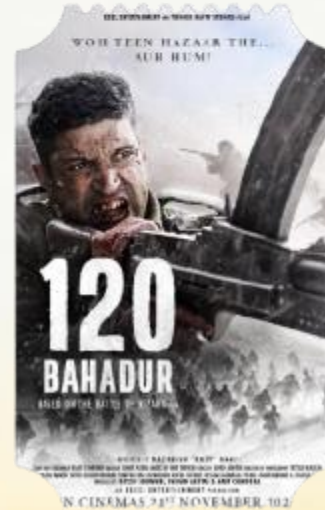
MASTII 4

CAST
VIVEK OBEROI,
RITEISH DESHMUKH,
AFTAB SHIVDASANI

DIRECTOR
MILAP ZAVERI

HINDI

21ST NOV'2025



120 BAHADUR

CAST
FARAN AKHTAR,
RAASHI KHANNA

DIRECTOR
RAZNEESH GHAI

HINDI

21ST NOV'2025



ZOOTOPIA
IMAX

CAST
JASON BATEMAN,
FORTUNE FEIMSTER,
GINNIFER GOODWIN

DIRECTOR
JARED BUSH,
BYRON HOWARD

ENGLISH

28TH NOV'2025



TERE ISHK MEIN

CAST
DHANUSH,
KRITI SANON

DIRECTOR
AANAND L RAI

HINDI, TAMIL

28TH NOV'2025



DHURANDHAR

CAST
RANVEER SINGH,
SANJAY DUTT,
ARJUN RAMPAL,
R MADHAVAN,
AKSHAYE KHANNA

DIRECTOR
ADITYA DHAR

HINDI

05TH DEC'2025



AKHANDA 2

CAST
NANDAMURI
BALAKRISHNA,
SASWATA
CHATTERJEE,
SAMYUKTHA MENON

DIRECTOR
BOYAPATI SRINU

TELUGU

05TH DEC'2025



KD - THE DEVIL

CAST
DHRUVA SARJA,
SHILPA SHETTY,
REESHMA NANAIAH,
SANJAY DUTT

DIRECTOR
PREM

KANNADA, HINID,
TELUGU, TAMIL,
MALAYALAM

12TH DEC'2025



AVATAR : FIRE AND ASH (3D)

IMAX, ICE,
SCREEN-X, 4DX

CAST
SAM WORTHINGTON,
ZOE SALDANA,
CLIFF CURTIS,

DIRECTOR
JAMES CAMERON

ENGLISH/HINDI/TA
MIL/TELEGU

19TH DEC'2025



THE ANACONDA

CAST
JACK BLACK,
PAUL RUDD,
DANIELA MELCHIOR

DIRECTOR
TOM GORMICAN

ENGLISH

25TH DEC'2025



ALPHA ICE

CAST
ALIA BHATT,
SHARVARI WAGH

DIRECTOR
SHIV RAWAIL

HINDI

25TH DEC'2025



MARK

CAST
KICCHA SUDEEP

DIRECTOR
VIJAY KARTIKEYAA

KANNADA,
MALAYALAM,
TELUGU, HINDI

25TH DEC'2025



TU MERI MAIN TERA, MAIN TERA TU MERI

CAST
KARTIK ARYAN,
ANANYA PANDEY

DIRECTOR
SAMEER VIDWANS

HINDI

31ST DEC'2025



JANA NAYAGAN

CAST
VIJAY,
POOJA HEDGE,
BOBBY DEOL

DIRECTOR
H VINOTH

TAMIL

09TH JAN'2026



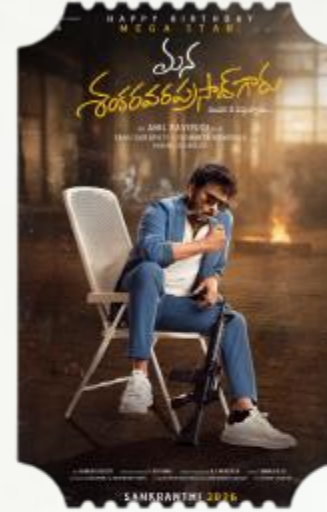
THE RAJA SAAB

CAST
PRABHAS,
NIDHI AGERWAL,
MALAVIKA MOHANAN

DIRECTOR
MARUTHI DASARI

TELUGU,
KANNADA,
TAMIL, HINDI

09TH JAN'2026



MANA SHANKARA VARAPRASAD GARU

CAST
CHIRANJEEVI

DIRECTOR
ANIL RAVIPUDI

TELUGU

11TH JAN'2026



28 YEARS LATER: THE BONE TEMPLE

CAST
RALPH FIENNES,
JACK O'CONNELL

DIRECTOR
NIA DCOSTA

ENGLISH , HINDI

16TH JAN'2026



BORDER 2

CAST
SUNNY DEOL,
VARUN DHAWAN,
DILJIT DOSANJH

DIRECTOR
ANURAG SINGH

HINDI

23RD JAN'2026



TU YAA MAIN

CAST
SHANAYA KAPOOR,
ADARSH GOURAV

DIRECTOR
BEJOY NAMBIAR

HINDI

13TH FEB'2026



O' ROMEO

CAST
SHAHID KAPOOR ,
TRIPTI DIMRI,
NANA PATEKAR,
RANDEEP HOODA,
DISHA PATANI,
DIA MIRZA

DIRECTOR
VISHAL BHARDWAJ

HINDI

13TH FEB'2026



SCREAM 7

CAST
ISABEL MAY,
MCKENNA GRACE,
NEVE CAMPBELL

DIRECTOR
KEVIN WILLIAMSON
ENGLISH

27TH FEB'2026



MARDAANI 3

CAST
RANI MUKHERJEE

DIRECTOR
ABHIRAJ MINAWALA
HINDI

27TH FEB'2026



TOXIC

CAST
YASH,
KIARA ADVANI

DIRECTOR
GEETHU MOHANDAS
KANNADA, HINDI

19TH MAR'2026



STREET FIGHTER

CAST
JASON MOMOA,
NOAH CENTINEO,
ANDREW KOJI

DIRECTOR
KITAO SAKURAI
ENGLISH

20TH MAR'2026



PROJECT HAIL MARY 4DX, SCREEN -X

CAST
RYAN GOSLING,
MILANA,
SANDRA HULLER

DIRECTOR
PHIL LORD
ENGLISH

20TH MAR'2026



DHAMAAL 4

CAST
AJAY DEVGN
RITEISH DESHMUKH,
ARSHAD WARSII,
JAAVED JAAFERI

DIRECTOR
INDRA KUMAR
HINDI

20TH MAR'2026



LOVE AND WAR

CAST
RANBIR KAPOOR,
ALIA BHATT,
VICKY KAUSHAL

DIRECTOR
SANJAY LEELA
BHANSALI

HINDI

20TH MAR'2026



PEDDI

CAST
RAM CHARAN,
DR.SHIVA RAJKUMAR,
JANHVI KAPOOR

DIRECTOR
BUCHI BABU SANA

**TELUGU, TAMIL,
MALAYALAM,
KANNADA, HINDI**

27TH MAR'2026

The background is a light cream color with a subtle gradient. It features faint, large-scale patterns of film reels in the corners. Scattered across the background are several yellow stars and circles of varying sizes. A dark grey circle is located in the bottom right corner.

**THANK
YOU**