



Capital Trust

INVESTOR PRESENTATION Q3 FY21

Enriching Lives



Empowering Enterprises



COMPANY OVERVIEW

COVID-19 UPDATE

MARKET SEGMENT

UNIQUE SELLING PROPOSITION

PRODUCT OFFERINGS

OPERATING MODEL

PORTFOLIO UPDATE

FINANCIALS

PARTNERS



STORY

CTL pioneers the **digitalization of the rural financing model**.

While maintaining the robustness of a decade-old disciplined lending model, CTL supplements it with advanced technologies to create a one-of-a-kind business that finds the perfect balance between technology and traditional financing



ORIGINS

Capital Trust is a publicly listed **Systematically Important Non Banking Finance Company with 35 years of rich legacy**.

Initial promoters of the company include former Governor Reserve Bank of India, Deputy Governor Reserve Bank of India and the Chief Justice of India



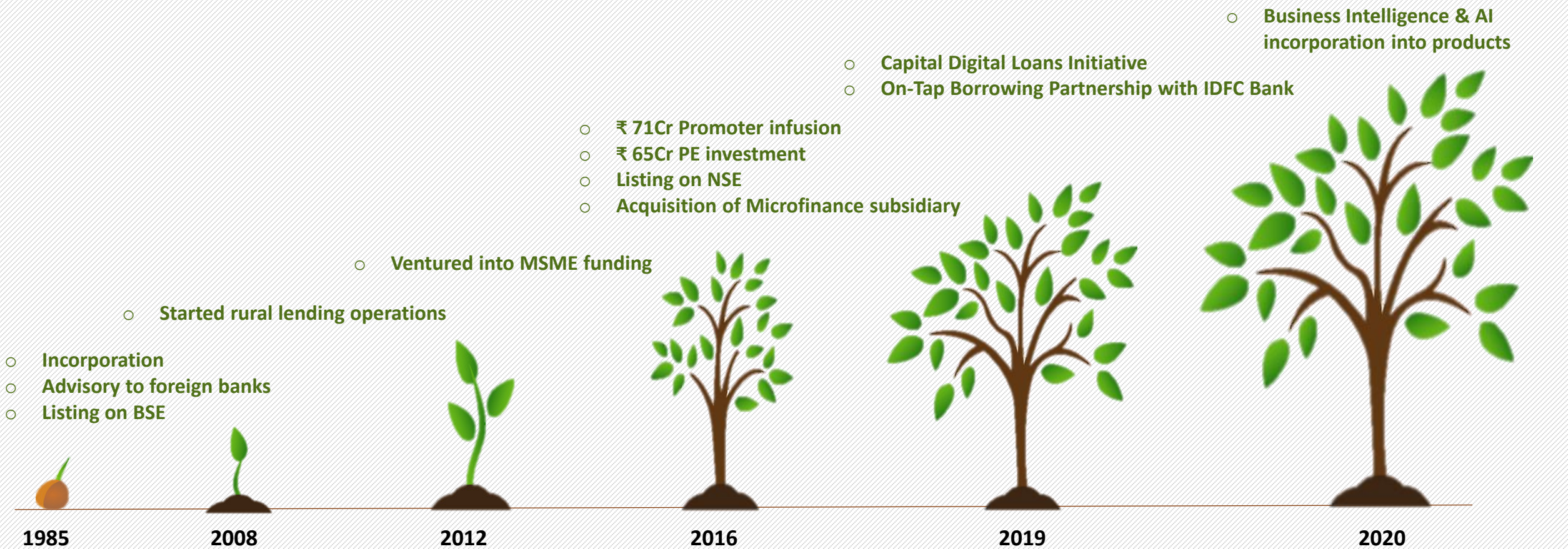
MISSION

To provide financial assistance to the **unbanked in deep interiors of rural India using “low-cost, high-tech” digital processes**

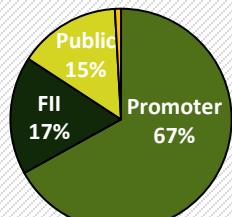



VISION

To become the first fully digital and cashless, technology-enabled lending model in rural India that **redefines the rules of MSME financing**



Company Position as on 31.12.2020

Portfolio: ₹ 427 Cr	Clients: 1,53,751	Branches: 233	States: 10	Employees: 2316	Q3 FY21 PAT: (₹ 0.4 Cr)	FY21 PAT (Till Q3): ₹ 2.6 Cr	Net Worth: ₹ 157 Cr	Shareholding: 	
-------------------------------	-----------------------------	-------------------------	----------------------	---------------------------	-----------------------------------	--	-------------------------------	---	---

COMPANY OVERVIEW

COVID-19 UPDATE

MARKET SEGMENT

UNIQUE SELLING PROPOSITION

PRODUCT OFFERINGS

OPERATING MODEL

PORTFOLIO UPDATE

FINANCIALS

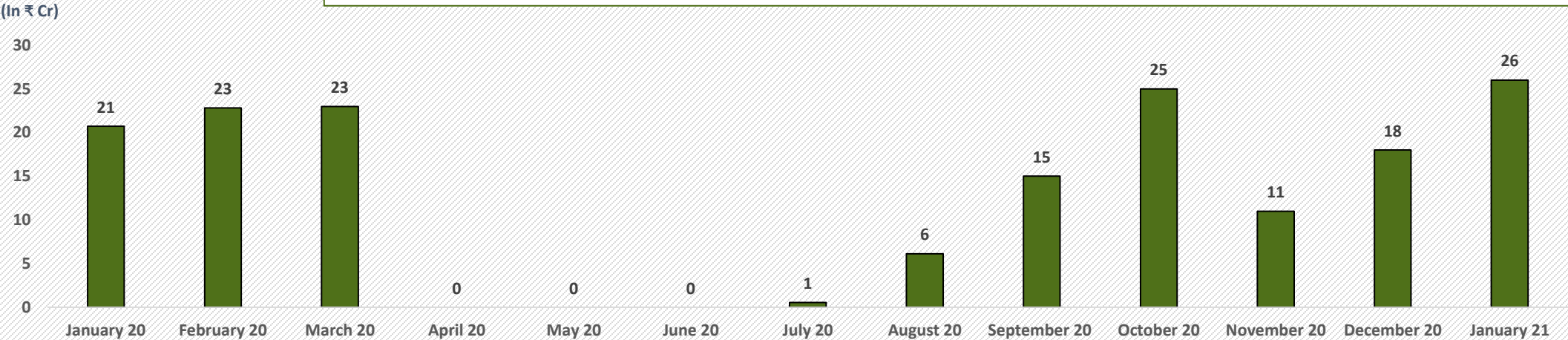
PARTNERS



BUSINESS UPDATE

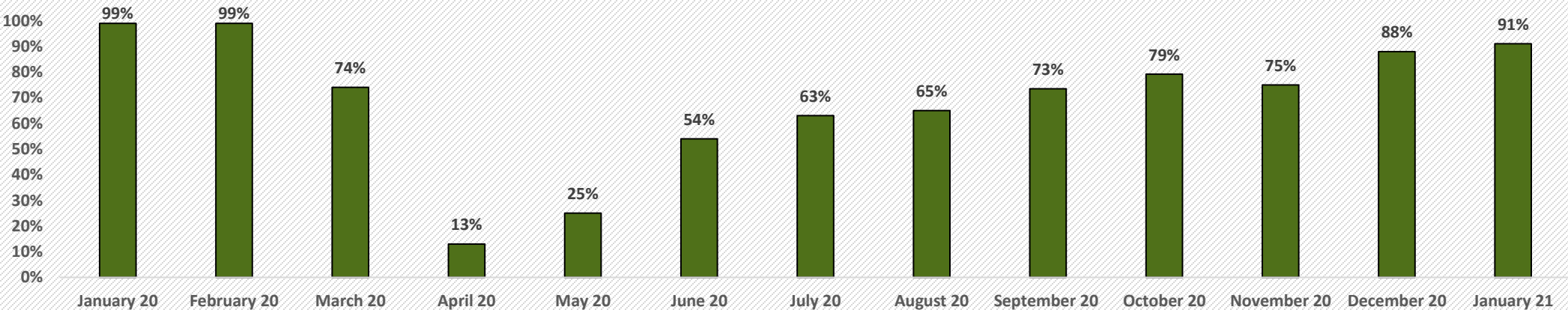
Disbursement

- Higher than Pre-Covid times
- Subject to newly developed automated disbursement engine and algorithmic credit scorecard



Collection *

- Increased month on month
- ₹ 75 Cr portfolio disbursed in FY21 has a collection efficiency of 99.85%



* Without factoring moratorium given to clients



High Liquidity Buffers (Actual and Systematic)

Actual

- ₹ 28Cr Opening Cash Balance in January 2021
- Capital Adequacy of 51%
- Leverage Ratio of 1.5x

Systematic

- Positive ALM
- Business Correspondent Relationship with IDFC First Bank
- Co-Lending Agreement Signed with Poonawalla Finance

Low Cost Funds Raised (FY21)		
	Average ROI	Amount (Cr)
Term Loan	11.5%	10
Non-Convertible Debenture	11.5%	30
Others (PTC / AFF / DA / OD)	12.6%	51
Total	12.1%	91



High Cost Funds Paid Off (FY21)		
	Average ROI	Amount (Cr)
Term Loan	13.4%	50
Non-Convertible Debenture	16.5%	48
Others (PTC / AFF / DA / OD)	14.0%	8
Total	14.9%	106

COMPANY OVERVIEW

COVID-19 UPDATE

MARKET SEGMENT

UNIQUE SELLING PROPOSITION

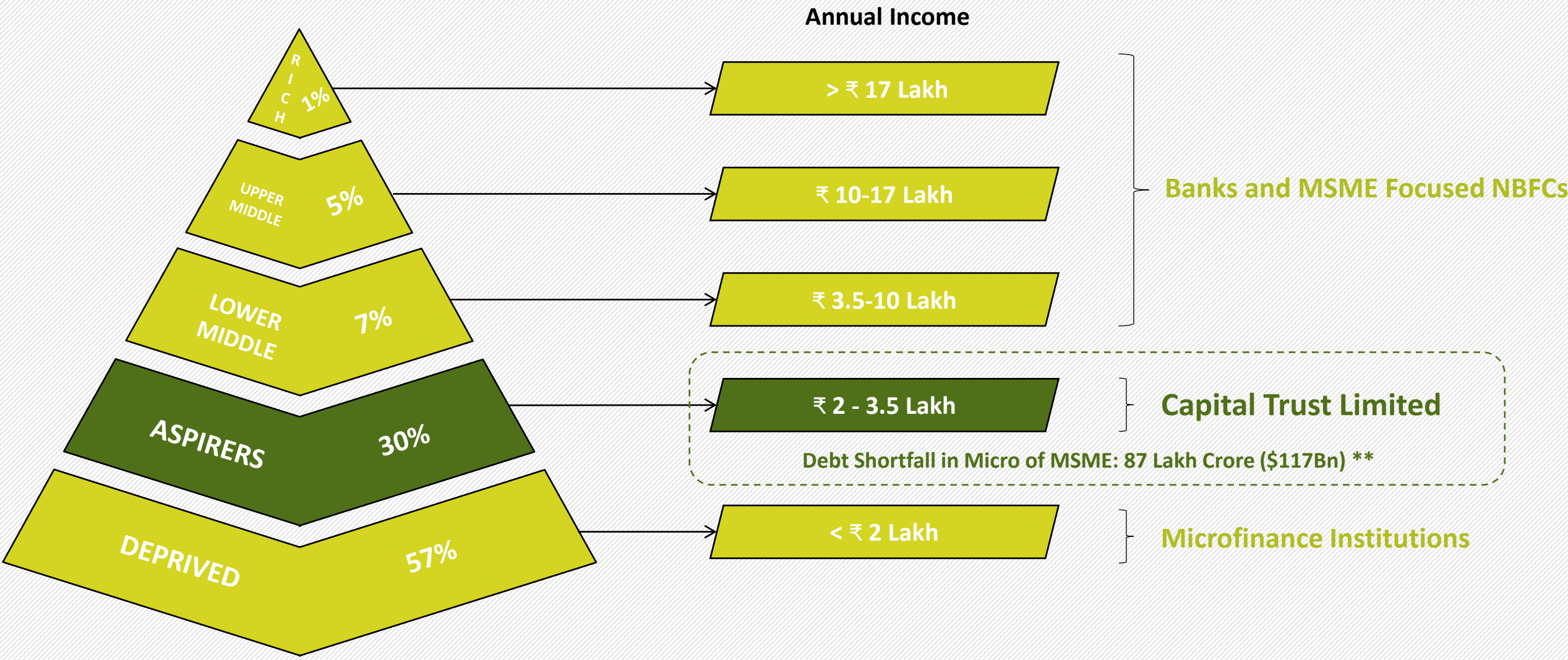
PRODUCT OFFERINGS

OPERATING MODEL

PORTFOLIO UPDATE

FINANCIALS

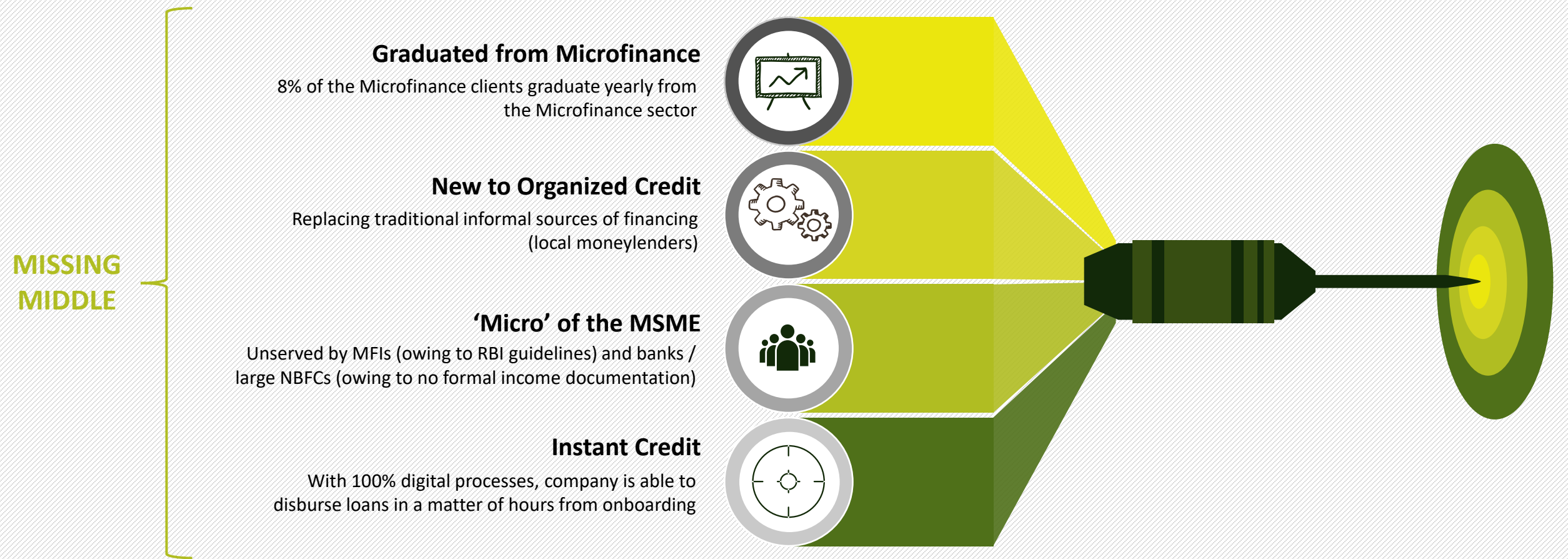
PARTNERS



*NCAER-CMCR Annual Income Data
**IFC Report on MSMEs (Nov 2018)

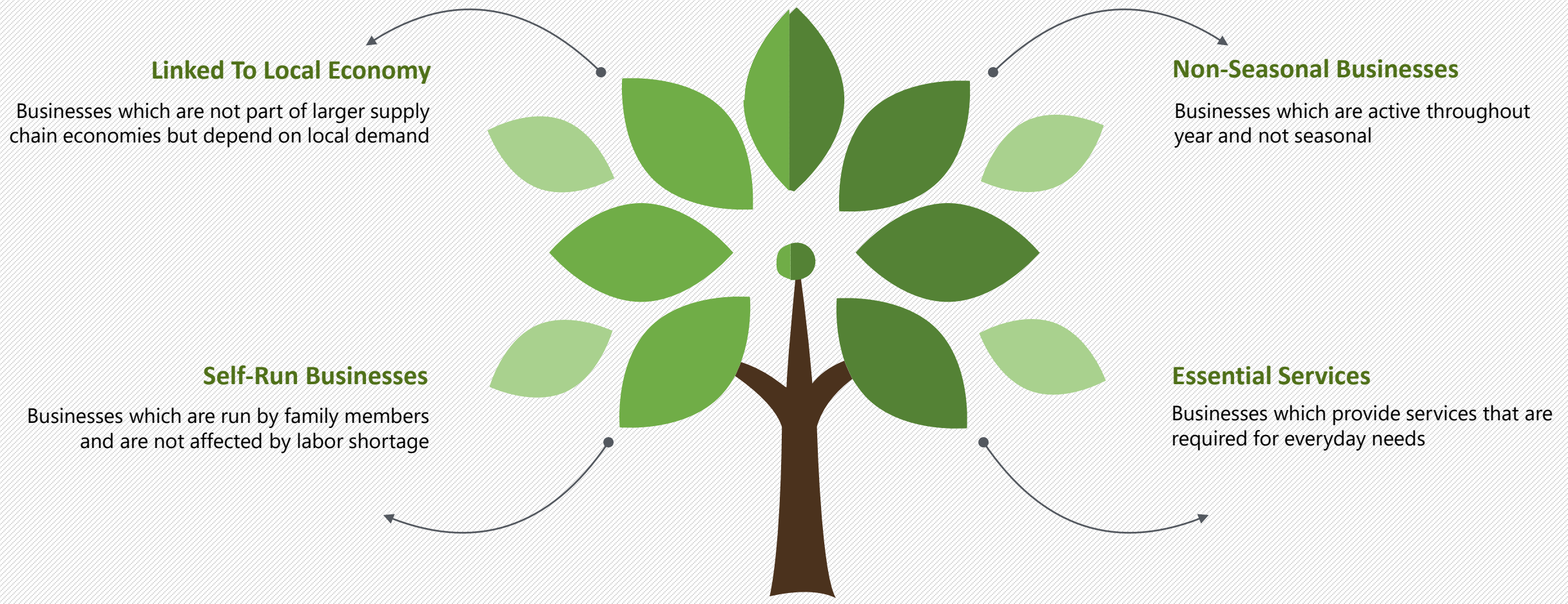


TARGET CLIENTELE





CUSTOMER SEGMENT





TYPICAL CLIENTELE



Kirana Stores



Dairy and Livestock Farmers



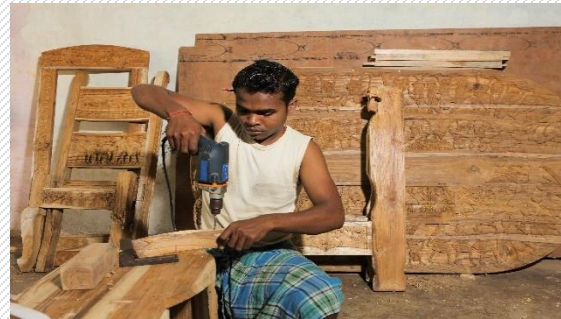
Grocery Vendors



Small Eateries



Textile Stores



Local Handicraft Producers



Utensil Stores



Hair Salons



Flower Sellers

COMPANY OVERVIEW

COVID-19 UPDATE

MARKET SEGMENT

UNIQUE SELLING PROPOSITION

PRODUCT OFFERINGS

OPERATING MODEL

PORTFOLIO UPDATE

FINANCIALS

PARTNERS



UNIQUE SELLING PROPOSITION

RURAL DOORSTEP-FINTECH COMPANY:



One-of-a-kind business that finds the perfect balance between technology and traditional financing

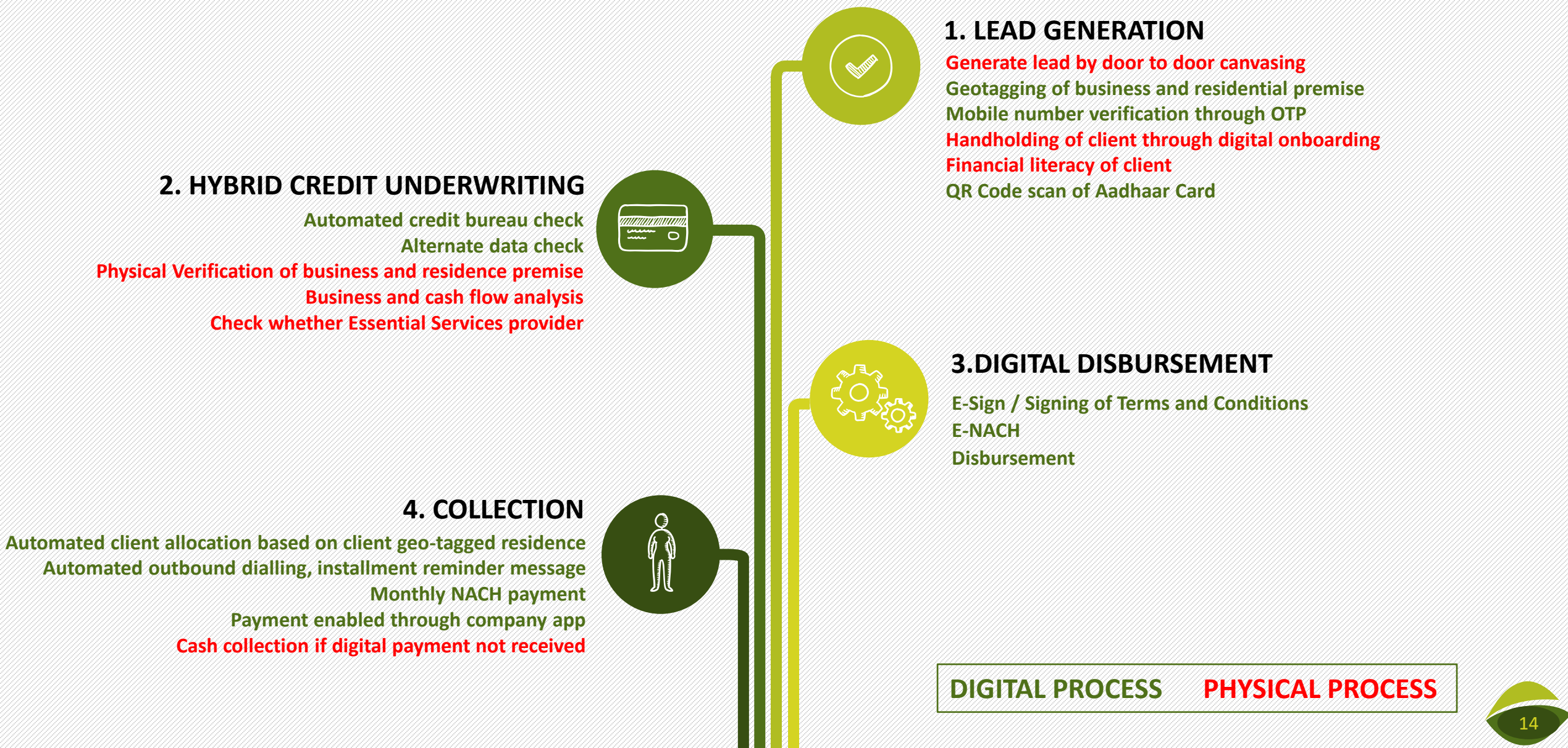
Hybrid Fintech-Physical Credit Model

Use of a credit decision scorecard that merges automated credit (credit bureau and alternate data) with physical credit (on-site cash flow analysis)

-  **Deep Rural Penetration**
241 brick-and-mortar branches in 63 districts and 10 states allowing company to reach where other NBFCs cannot
-  **Business Intelligence**
Use of advanced statistical models and predictive analysis before sanctioning a loan and after for performance evaluation



-  **Digitally Assisted Rural Collection Model**
Incentivized digital repayment with cashback for clients and staff. Followed up by physical visit for cash collection in case of non-clearance
-  **Transparency For Clients**
Use of client facing app (Capital Connect) to see real-time loan information



COMPANY OVERVIEW

COVID-19 UPDATE

MARKET SEGMENT

UNIQUE SELLING PROPOSITION

PRODUCT OFFERINGS

OPERATING MODEL

PORTFOLIO UPDATE

FINANCIALS

PARTNERS

MOVE TO DIGITAL COLLECTION

Group Loan

Cash Collection

Safety
Efficiency

Individual Loan

Digital Collection

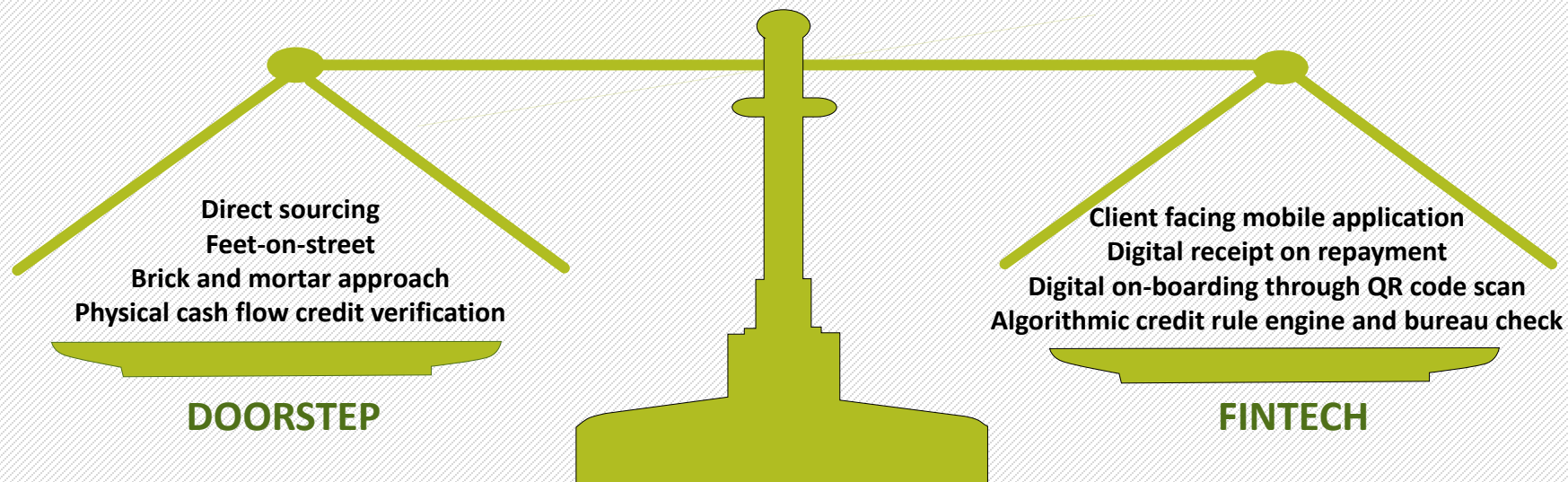
DISBURSEMENT

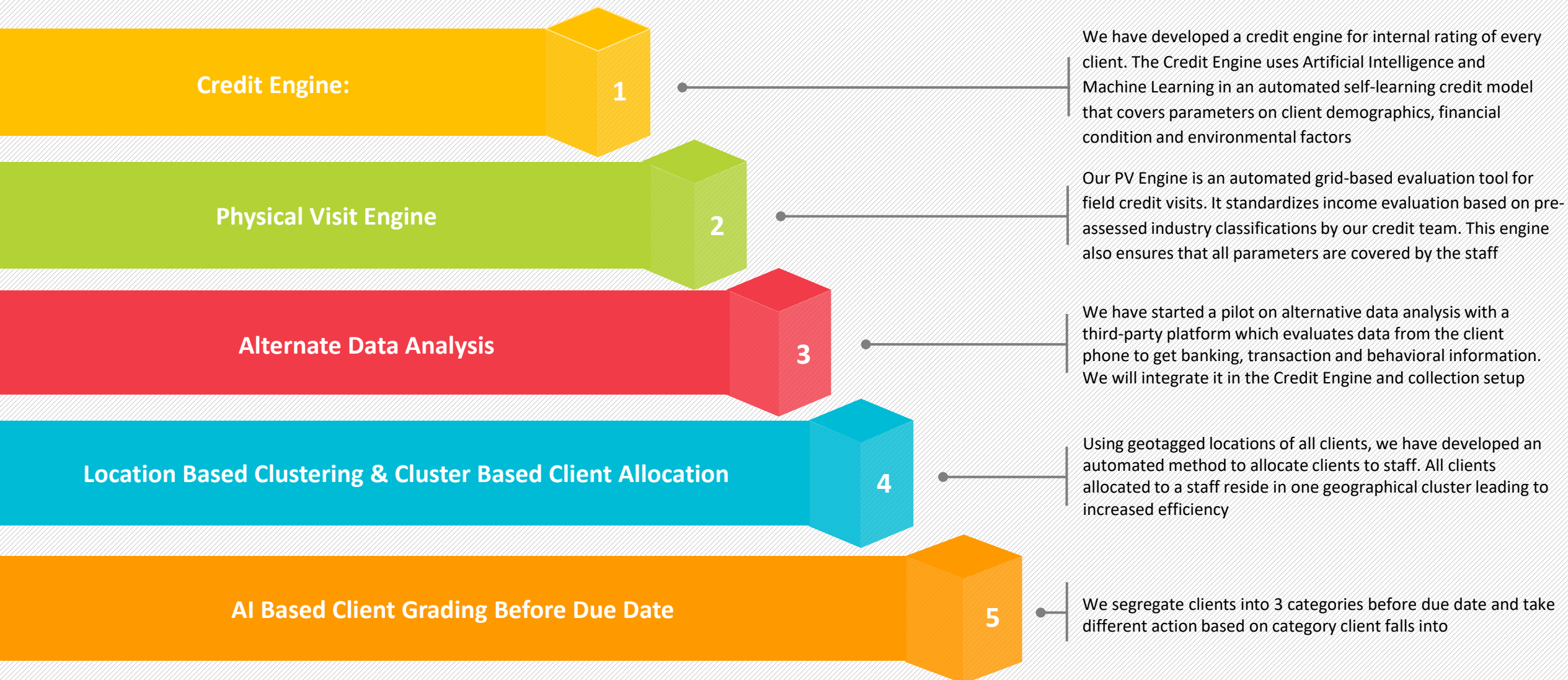
- One of the first rural NBFCs to start 100% cashless disbursement in 2015

COLLECTION

- Pioneered digital collection in rural lending in 2019
- Loans given since January 2019 have online collection mode
- Enabled all forms of online payment modes: NACH + Payment Gateway

TRADITIONAL LENDING PLUS TECHNOLOGICAL INNOVATION





Staff Engine

Our staff engine is an integrated tool for real time monitoring of current staff availability and projected staff sufficiency at branch level. By looking at past attendance, this engine predicts staff shortfall in times to come

Performance Management Engine

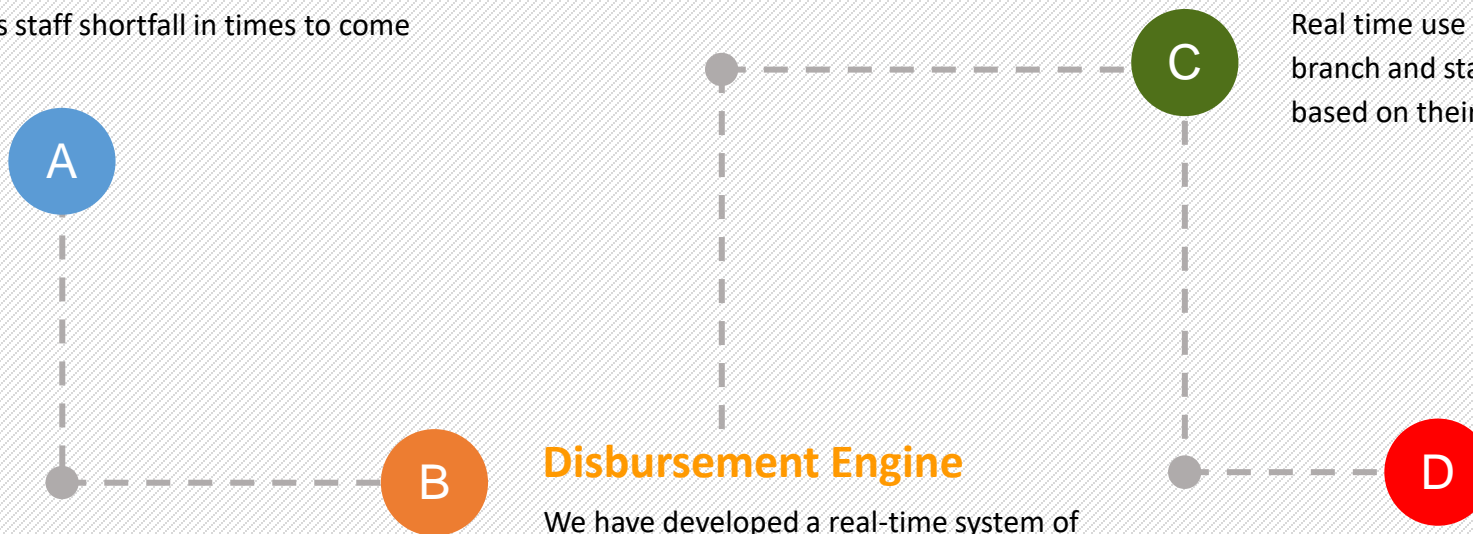
Real time use of data to segregate branch and staff into different tiers based on their operational productivity

Portfolio Risk Management Engine

Early warning signals to monitor real time delinquency trends in actual portfolio and factors that can have potential portfolio impact

Disbursement Engine

We have developed a real-time system of automated controls on disbursement to avoid risk build up in branches. This engine helps monitor internal and external parameters and ensures automatic stoppage of branch / staff disbursement where collection parameters fall below a prescribed level





PRODUCTS OFFERED



Capital Magic Loan

Unsecured Digital Business Loan

Ticket Size (₹): 30,000 – 50,000

Tenure: 12-18 months

ROI: 40%

Repayment: Digital followed by physical cash collection



Micro Business Loan

Unsecured Digital Business Loan

Ticket Size (₹): 60,000

Tenure: 24 months

ROI: 32%

Repayment: Digital followed by physical cash collection



WHY CTL?

- Branch banking
- Ease of getting loan
- Unsecured loan
- Multiutility business loan
- Human connect
- Quick turnaround time
- Transparency with Capital Connect app
- Paperless processes

PRODUCT OPTIMIZATION

- Small ticket size
- Short tenure
- Optimal EMI amount
- Short Turn-Around-Time
- High yield
- Digital collection enabled
- Full cash collection setup
- Geo-tagged and Analytics backed

COMPANY OVERVIEW

COVID-19 UPDATE

MARKET SEGMENT

UNIQUE SELLING PROPOSITION

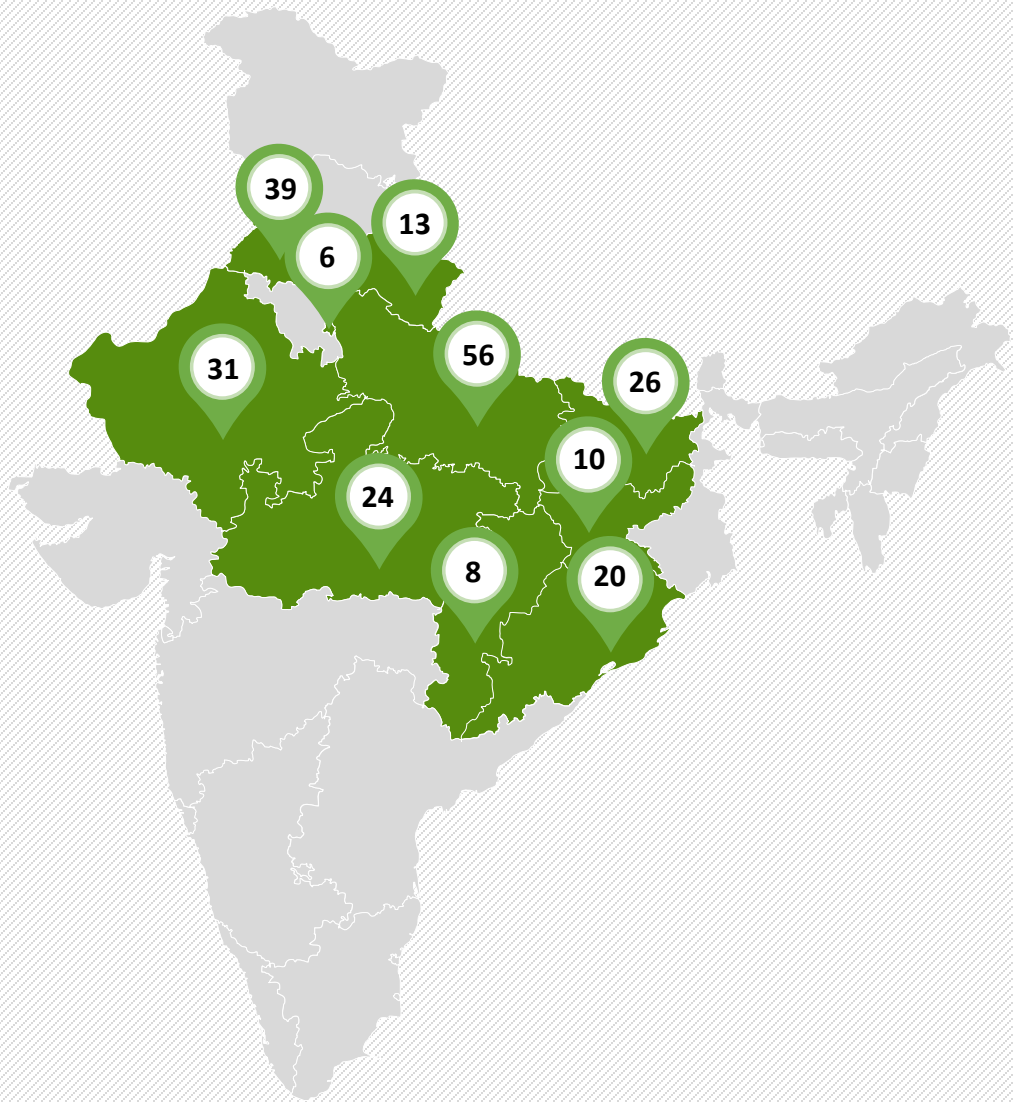
PRODUCT OFFERINGS

OPERATING MODEL

PORTFOLIO UPDATE

FINANCIALS

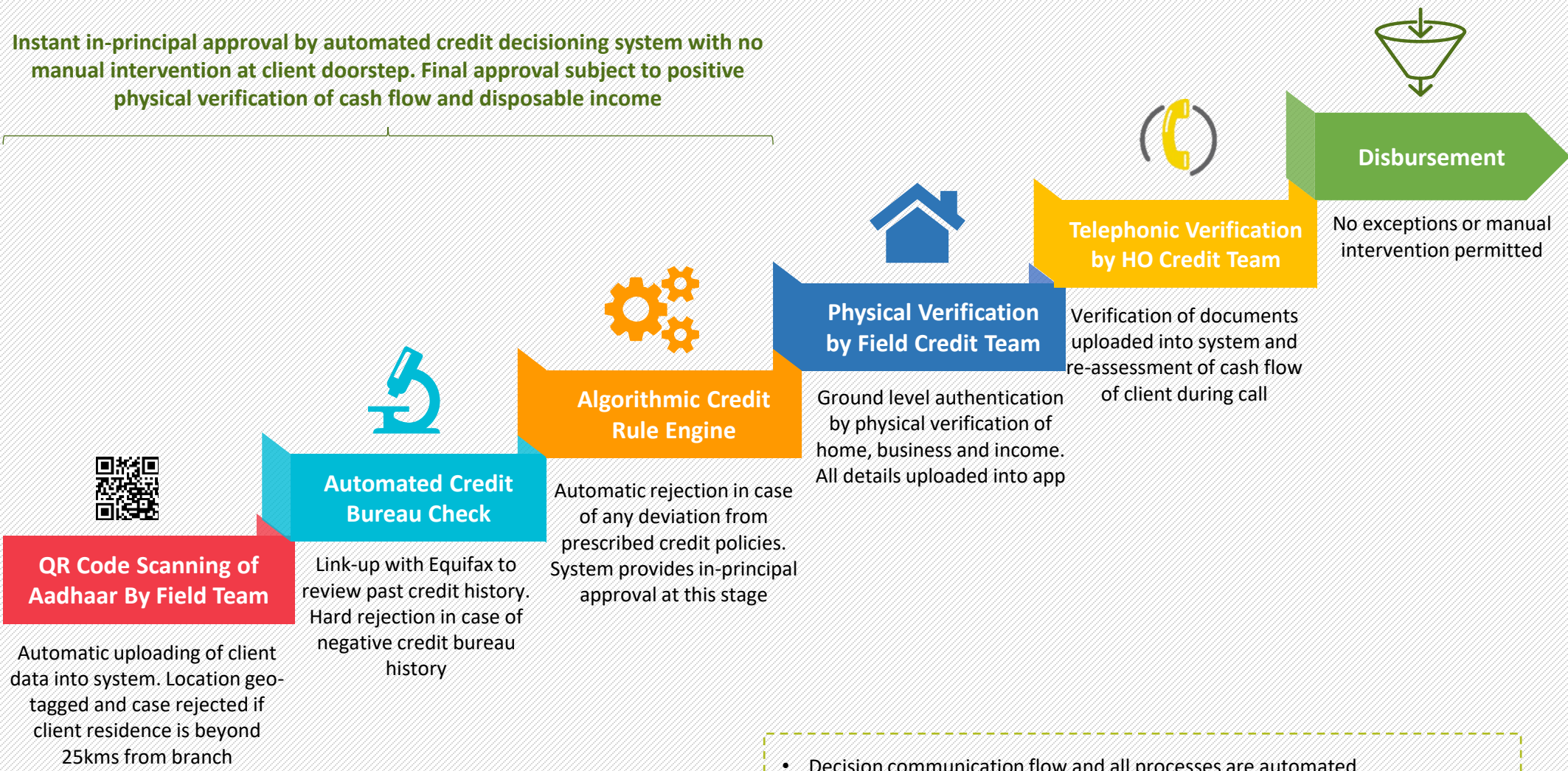
PARTNERS



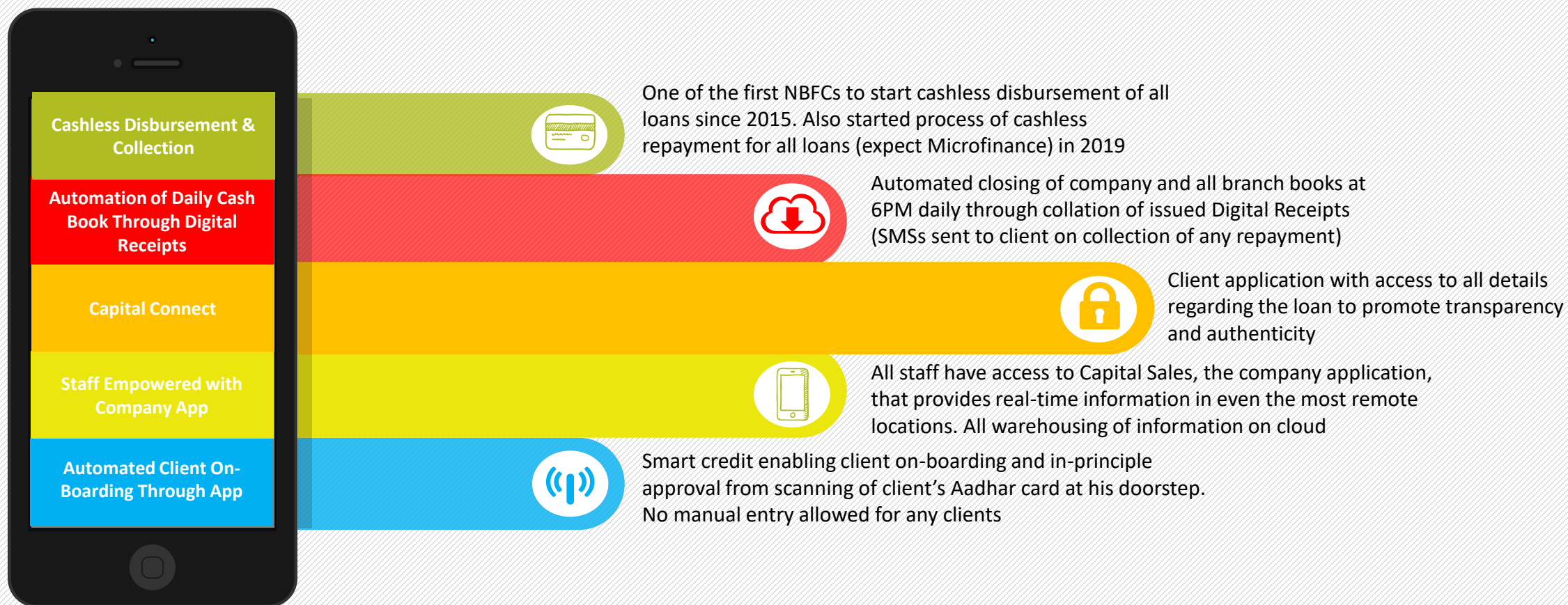
Branches: 233
Districts: 63
States: 10



SMART CREDIT



- Decision communication flow and all processes are automated
- Technology used at all stages of loan cycle eliminating requirement of physical movement of documents
- All processes time stamped and tracking of cases available on live basis



COMPANY OVERVIEW

COVID-19 UPDATE

MARKET SEGMENT

UNIQUE SELLING PROPOSITION

PRODUCT OFFERINGS

OPERATING MODEL

PORTFOLIO UPDATE

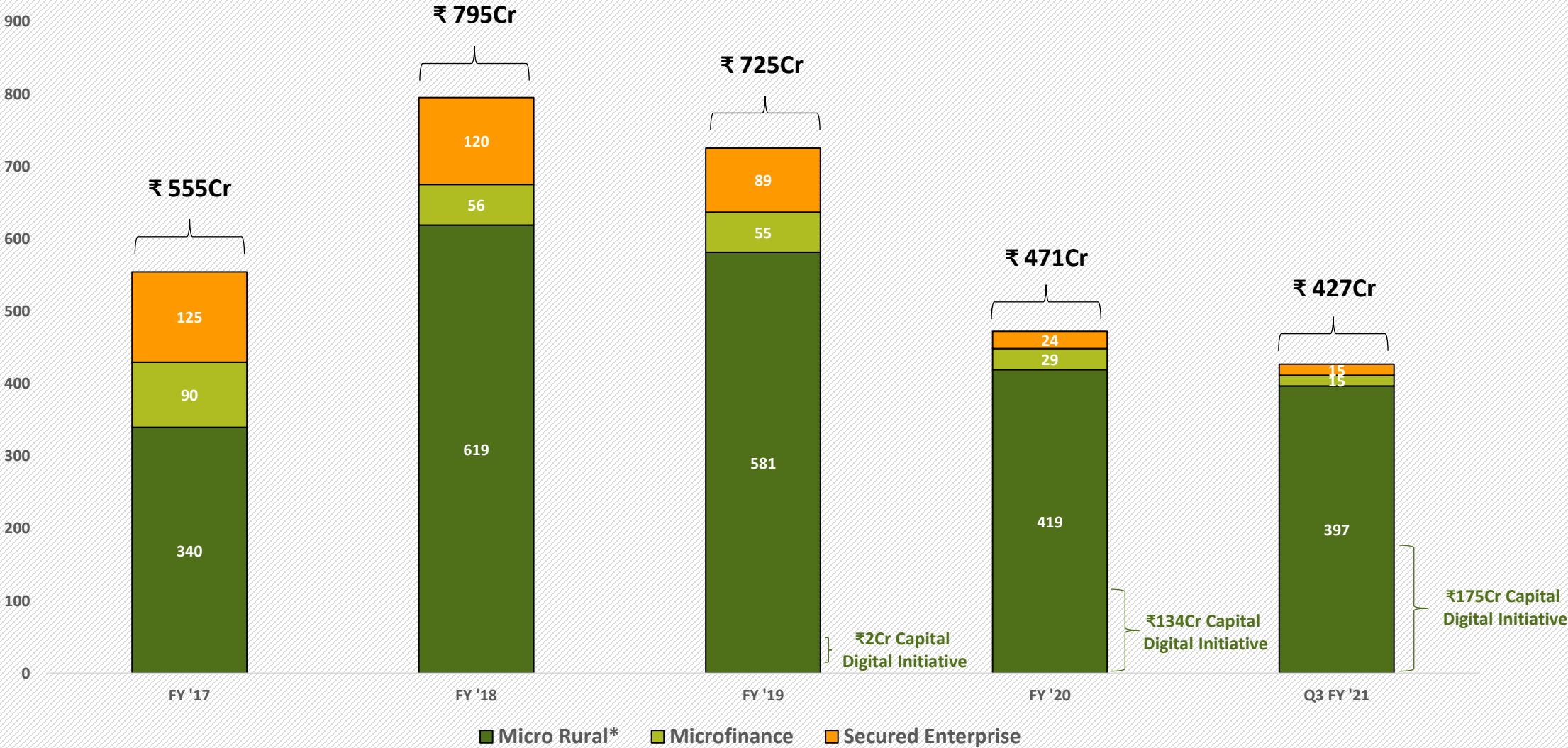
FINANCIALS

PARTNERS



PRODUCTWISE PORTFOLIO

(In ₹ Cr)



*Further Classified into Micro-Enterprise, Micro-Business and Capital Magic Loan



STATEWISE PORTFOLIO

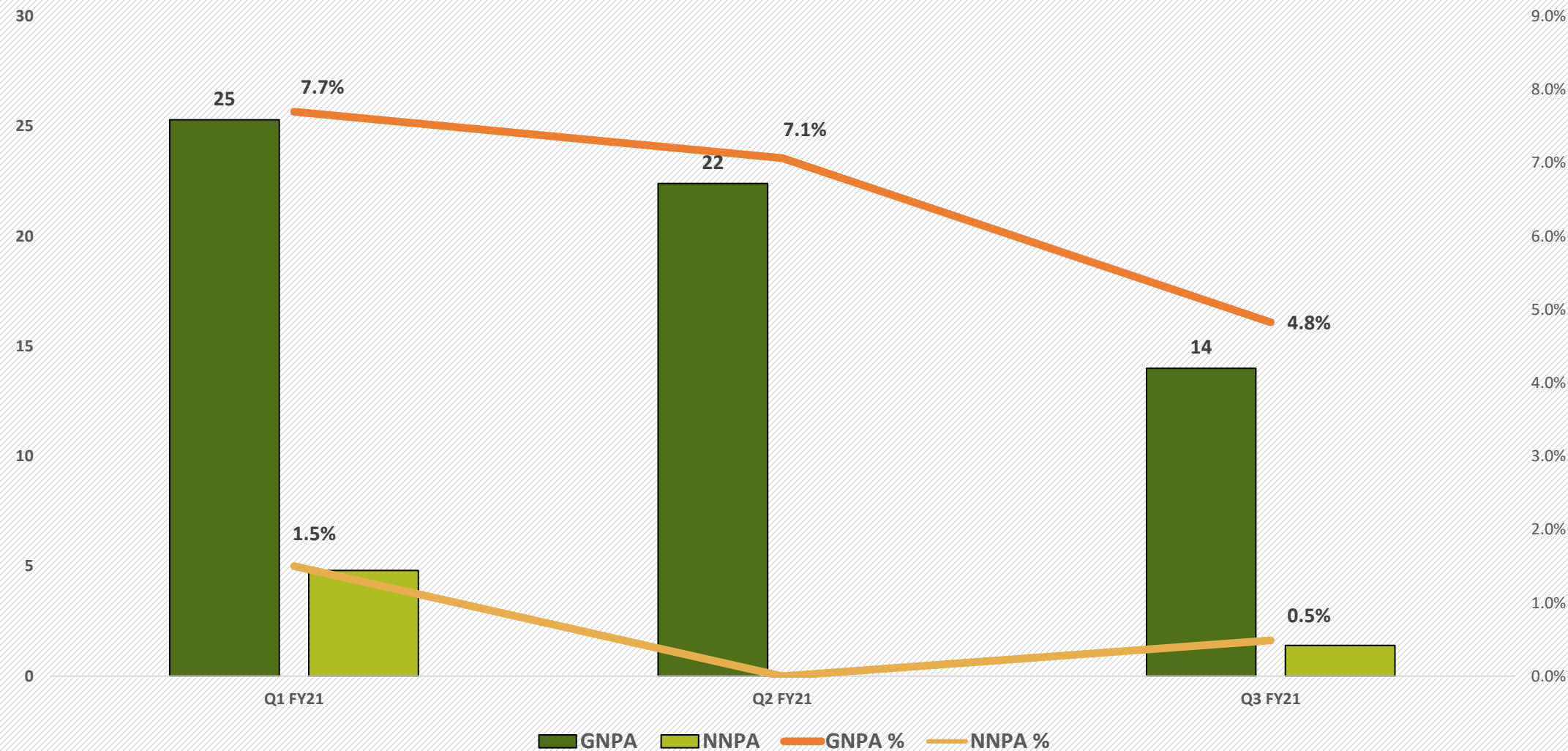
(In ₹ Cr)





PORTFOLIO QUALITY

(In ₹ Cr)



COMPANY OVERVIEW

COVID-19 UPDATE

MARKET SEGMENT

UNIQUE SELLING PROPOSITION

PRODUCT OFFERINGS

OPERATING MODEL

PORTFOLIO UPDATE

FINANCIALS

PARTNERS

ANNUAL CHANGE (Q3 FY20 vs Q3 FY21)

Assets Under Management (in Cr):

508.5



(-16%)

426.8

Capital Digital Initiative (in Cr.):

174.9



(88%)

93.1

Net Worth (in Cr):

162.2



(-3%)

157.0

Book Value Per Share (in Rs):

100.0



(-3%)

96.8

Capital Adequacy Ratio (in %):

51.2



(23%)

41.6

Gross NPA (in %):

6.4



(-24%)

4.8

Provision Coverage Ratio (in %):

89.9



(92%)

46.9

Borrowings (in Cr):

325.4



(-27%)

236.9

Leverage (in X)

2.0



(-25%)

1.5

QUARTERLY CHANGE (Q2 FY21 vs Q3 FY21)

Assets Under Management (in Cr):

429.5



(-1%)

426.8

Capital Digital Initiative (in Cr.):

174.9



(22%)

144.3

Net Worth (in Cr):

157.5



(-0%)

157.0

Book Value Per Share (in Rs):

97.1



(-1%)

96.8

Capital Adequacy Ratio (in %):

51.2



(3%)

49.8

Gross NPA (in %):

7.7



(-37%)

4.8

Provision Coverage Ratio (in %):

89.9



(12%)

80.6

Borrowings (in Cr):

258.5



(-8%)

236.9

Leverage (in X)

1.6



(-8%)

1.5



KEY FINANCIALS

Line Item	Q3 FY20	Q3 FY21	(YoY)	Q2 FY21	Q3 FY21	(QoQ)
Total Income	41.5	31.2	-25%	27.0	31.2	15%
Total Expense (excluding tax)	30.4	31.2	2%	25.9	31.2	20%
Profit / (loss) before tax	11.1	0.0	-100%	1.1	0.0	-99%
Profit / (loss) after tax	8.2	-0.4	-105%	0.9	-0.4	-147%
Net Worth	162.2	157.0	-3%	157.5	157.0	0%
Micro-Enterprise Loan	347.1	222.0	-36%	245.1	222.0	-9%
Micro-Business Loan	55.1	89.6	63%	91.0	89.6	-1%
Capital Magic Loan	38.0	85.2	124%	53.3	85.2	60%
Total Micro-Rural Loan	440.3	396.9	-10%	389.3	396.9	2%
Secured Enterprise Loan	27.7	15.1	-45%	20.3	15.1	-26%
Microfinance Loan	40.6	14.8	-63%	19.8	14.8	-25%
Total Assets Under Management (AUM)	508.5	426.8	-16%	429.5	426.8	-1%
On-Book Portfolio	374.1	290.0	-22%	317.3	290.0	-9%
Off-Book Portfolio	134.4	136.8	2%	112.2	136.8	22%
Total Assets Under Management (AUM)	508.5	426.8	-16%	429.5	426.8	-1%



KEY RATIOS



Line Item	Q3 FY20	Q3 FY21	(YoY)	Q2 FY21	Q3 FY21	(QoQ)
Net Interest Margin*	10.7%	11.6%	9%	9.6%	11.6%	21%
Operating Cost to AUM Ratio*	12.4%	15.1%	22%	13.0%	15.1%	16%
Earning Per Share (Rs.)*	20.3	-1.0	-105%	2.2	-1.0	-147%
Book Value Per Share (Rs.)	100.0	96.8	-3%	97.1	96.8	0%
Return on Assets*	6.1%	-0.4%	-106%	0.8%	-0.4%	-150%
Return on Equity*	20.7%	-1.1%	-105%	2.2%	-1.1%	-147%
Gross NPA (%)	6.4%	4.8%	-24%	7.7%	4.8%	-37%
Net NPA (%)	3.5%	0.5%	-86%	2.5%	0.5%	-80%
Capital Adequacy Ratio	41.6%	51.2%	23%	49.8%	51.2%	3%
Provision Coverage Ratio	46.9%	89.9%	92%	80.6%	89.9%	12%
Cost of Borrowing	14.2%	13.1%	-8%	13.1%	13.1%	1%
Leverage	2.0	1.5	-25%	1.6	1.5	-8%

*Annualized

COMPANY OVERVIEW

COVID-19 UPDATE

MARKET SEGMENT

UNIQUE SELLING PROPOSITION

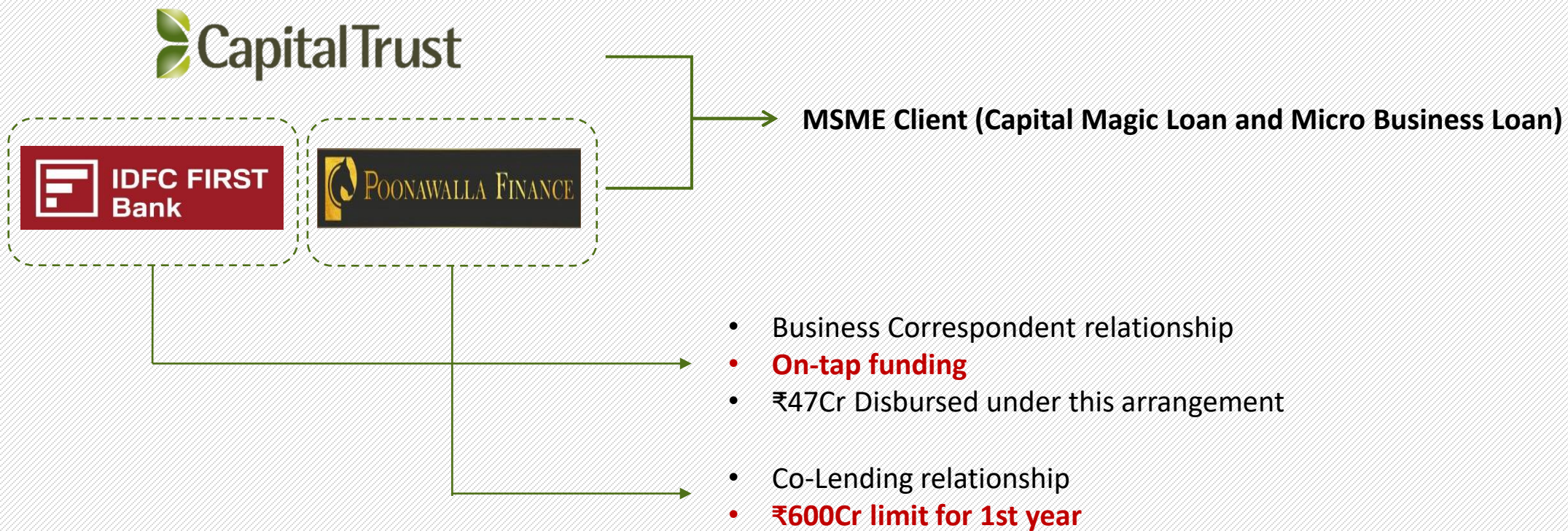
PRODUCT OFFERINGS

OPERATING MODEL

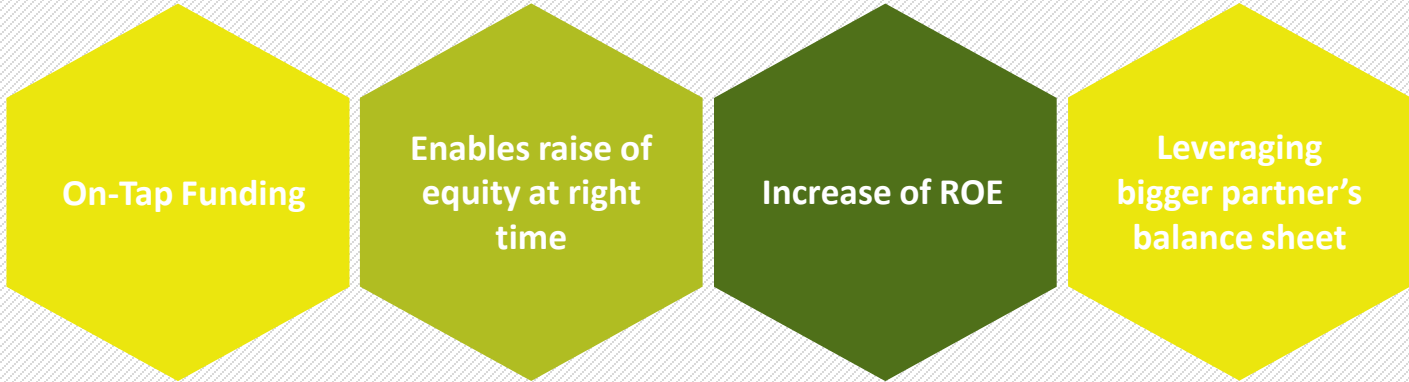
PORTFOLIO UPDATE

FINANCIALS

PARTNERS



Benefits of Long-Term Funding Secured:





DEBT & DIRECT ASSIGNMENT PARTNERSHIPS

Public Sector Banks: 5



Private Banks: 2



NBFCs: 5



THANK YOU



DISCLAIMER

This presentation has been prepared by and is the sole responsibility of Capital Trust Limited. By accessing this presentation, you are agreeing to be bound by the trailing restrictions.

This presentation does not constitute or form part of any offer or invitation or inducement to sell or issue, or any solicitation of any offer or recommendation to purchase or subscribe for, any securities of the Company, nor shall it or any part of it or the fact of its distribution form the basis of, or be relied on in connection with, any contractor commitment therefore. In particular, this presentation is not intended to be a prospectus or offer document under the applicable laws of any jurisdiction, including India. No representation or warranty, express or implied, is made as to, and no reliance should be placed on, the fairness, accuracy, completeness or correctness of the information or opinions contained in this presentation. Such information and opinions are in all events not current after the date of this presentation. There is no obligation to update, modify or amend this communication or to otherwise notify the recipient if information, opinion, projection, forecast or estimate set forth herein, changes or subsequently becomes inaccurate.

Certain statements contained in this presentation that are not statements of historical fact constitute “forward-looking statements.” You can generally identify forward-looking statements by terminology such as “aim”, “anticipate”, “believe”, “continue”, “could”, “estimate”, “expect”, “intend”, “may”, “objective”, “goal”, “plan”, “potential”, “project”, “pursue”, “shall”, “should”, “will”, “would”, or other words or phrases of similar import. These forward-looking statements involve known and unknown risks, uncertainties, assumptions and other factors that may cause the Company’s actual results, performance or achievements to be materially different from any future results, performance or achievements expressed or implied by such forward-looking statements or other projections. Important factors that could cause actual results, performance or achievements to differ materially include, among others: (a) material changes in the regulations governing our businesses; (b) the Company's inability to comply with the capital adequacy norms prescribed by the RBI; (c) decrease in the value of the Company's collateral or delays in enforcing the Company's collateral upon default by borrowers on their obligations to the Company; (d) the Company's inability to control the level of NPAs in the Company's portfolio effectively; (e) certain failures, including internal or external fraud, operational errors, systems malfunctions, or cyber security incidents; (f) volatility in interest rates and other market conditions; and (g) any adverse changes to the Indian economy.

This presentation is for general information purposes only, without regard to any specific objectives, financial situations or informational needs of any particular person. The Company may alter, modify or otherwise change in any manner the content of this presentation, without obligation to notify any person of such change or changes.