



Mindteck Investor Presentation

Quarter and Nine months ended December 31, 2022

Financial Performance

Performance Highlights – Consolidated Results

Q3 FY 2022-23:

- Revenue at ₹826.6 million (\$10.4 million) for the quarter ended December 31, 2022 compared to ₹840.7 million (\$10.7 million) for the quarter ended September 30, 2022 and ₹757.2 million (\$10.2 million) for the quarter ended December 31, 2021.
- EBITDA for the quarter ended December 31, 2022, at ₹74.8 million (\$0.9 million) compared to ₹61.7 million (\$0.8 million) for the quarter ended September 30, 2022, and ₹54.6 million (\$0.7 million) for the quarter ended December 31, 2021.
- Profit After Tax (“PAT”) for the quarter ended December 31, 2022, at ₹55.1 million (\$0.7 million) as against ₹ 47.3 million (\$0.6 million) for the quarter ended September 30, 2022, and ₹44.5 million (\$0.6 million) for the quarter ended December 31, 2021.

Year to Date 2022-23:

- Revenue at ₹2479.9 million (\$31.1 million), growth of 10.2% as against the preceding year.
- EBITDA at ₹202.3 million (\$2.5 million), growth of 24.1% as against the preceding year.
- Profit After Tax (“PAT”) at ₹153.6 million (\$1.9 million) compared to ₹303.2 million (\$ 4.1 million) in the preceding year which includes exceptional income of ₹181.8 million.

Performance Highlights – Consolidated Results

SEQUENTIAL Q3'23 VS Q2'23

Amount in ₹ million

SI No.	Particulars	Q3'23 (Unaudited)	Q2'23 (Unaudited)	Change%
1	Income:			
	a) Revenue	826.6	840.7	-1.7%
	b) Other income	9.8	10.3	-4.9%
	Total Income (a+b)	836.4	851.0	-1.7%
2	Expenses:			
	a) Cost of technical sub-contractors	177.7	174.3	2.0%
	b) Employee benefits expense	526.8	537.8	-2.0%
	c) Finance cost	2.6	2.5	4.0%
	d) Depreciation and amortization	11.0	11.0	0.0%
	e) Other expenses	47.3	66.9	-29.3%
	Total Expenses (a+b+c+d+e)	765.4	792.5	-3.4%
3	Profit Before Tax ("PBT") (1-2)	71.0	58.5	21.4%
4	Tax expense	15.9	11.2	42.0%
5	Profit After Tax ("PAT") (3-4)	55.1	47.3	16.5%

Performance Summary – Consolidated Results

YOY Q3'23 VS Q3'22

Amount in ₹ million

SI No.	Particulars	Q3'23 (Unaudited)	Q3'22 (Unaudited)	Change%
1	Income:			
	a) Revenue	826.6	757.2	9.2%
	b) Other income	9.8	10.5	-6.7%
	Total Income (a+b)	836.4	767.7	8.9%
2	Expenses:			
	a) Cost of technical sub-contractors	177.7	160.9	10.4%
	b) Employee benefits expense	526.8	470.5	12.0%
	c) Finance cost	2.6	2.1	23.8%
	d) Depreciation and amortization	11.0	11.6	-5.2%
	e) Other expenses	47.3	71.2	-33.6%
	Total Expenses (a+b+c+d+e)	765.4	716.3	6.9%
3	Profit Before Tax ("PBT") (1-2)	71.0	51.4	38.1%
4	Tax expense	15.9	6.9	130.4%
5	Profit After Tax ("PAT") (3-4)	55.1	44.5	23.8%

Performance Summary – Consolidated Results

YTD FY 23 Vs. YTD FY 22

Amount in ₹ million

SI No.	Particulars	YTD –'23 (Unaudited)	YTD –'22 (Unaudited)	Change%
1	Income:			
	a) Revenue	2,479.9	2,251.1	10.2%
	b) Other income	33.4	34.2	-2.3%
	Total Income (a+b)	2,513.3	2,285.3	10.0%
2	Expenses:			
	a) Cost of technical sub-contractors	526.5	472.8	11.4%
	b) Employee benefits expense	1,573.6	1,410.2	11.6%
	c) Finance cost	7.6	6.8	11.8%
	d) Depreciation and amortization	34.2	37.5	-8.8%
	e) Other expenses	177.5	205.1	-13.5%
	Total Expenses (a+b+c+d+e)	2,319.4	2,132.4	8.8%
3	Profit Before Tax & Exceptional Items ("PBT") (1-2)	193.9	152.9	26.8%
4	Exceptional Items*	-	181.8	(a)
5	Profit Before Tax ("PBT") (3+4)	193.9	334.7	-42.1%
6	Tax expense	40.3	31.5	27.9%
7	Profit After Tax ("PAT") (5-6)	153.6	303.2	-49.3%

(a) - % change is not computed since there is no comparative available.

* Benefit received under Paycheck Protection Program (PPP)

Mindteck Fact Sheet

Fact Sheet

FINANCIAL PERFORMANCE HIGHLIGHTS

Amount in ₹ million

Highlights (INR)		Q3-2023	Q2-2023	Q3-2022	Growth %		FY 22
					QoQ	YoY	
	Revenue	826.6	840.7	757.2	-1.7%	9.2%	2,987.8
	EBITDA	74.8	61.7	54.6	21.2%	37.0%	207.7
	PAT	55.1	47.3	44.5	16.5%	23.8%	333.1

Amount in \$ million

Highlights (USD)		Q3-2023	Q2-2023	Q3-2022	Growth %		FY 22
					QoQ	YoY	
	Revenue	10.4	10.7	10.2	-2.8%	2.0%	40.1
	EBITDA	0.9	0.8	0.7	12.5%	28.6%	2.8
	PAT	0.7	0.6	0.6	16.7%	16.7%	4.5

Exchange Rate		Q2-2023	Q1-2023	Q2-2022	FY 22
	Average (P&L) USD/INR	79.8	78.5	74.0	74.4

Fact Sheet

REVENUE METRICS

Geography		Q3-2023	Q2-2023	Q3-2022	FY 22
	USA	56%	60%	60%	59%
	IMEA	9%	8%	8%	9%
	Europe	17%	17%	18%	18%
	APAC	18%	15%	14%	14%

Delivery Centers		Q3-2023	Q2-2023	Q3-2022	FY 22
	USA	47%	51%	52%	52%
	India	13%	13%	12%	13%
	Singapore	11%	9%	8%	8%
	Malaysia	7%	6%	6%	6%
	UK	10%	11%	14%	14%
	Germany	7%	5%	4%	3%
	Bahrain	5%	5%	4%	4%

Fact Sheet

REVENUE METRICS

Project Type		Q3-2023	Q2-2023	Q3-2022	FY 22
	Time and Material	97%	95%	93%	95%
	Fixed	3%	5%	7%	5%

Services		Q3-2023	Q2-2023	Q3-2022	FY 22
	Managed Service ("MS")	38%	40%	41%	39%
	Professional Services ("PS")	62%	60%	59%	61%

Revenue Mix-Efforts		Q3-2023	Q2-2023	Q3-2022	FY 22
	Onsite	58%	57%	58%	59%
	Offshore	42%	43%	42%	41%

Revenue Mix-Business Offerings		Q3-2023	Q2-2023	Q3-2022	FY 22
	Talent Management	53%	50%	43%	43%
	Product Engineering	28%	30%	36%	37%
	Information Technology Services	19%	20%	21%	20%

Fact Sheet

CLIENT METRICS

Clients		Q3-2023	Q2-2023	Q3-2022	FY 22
	Top 5	61%	61%	60%	55%
	Top 10	71%	72%	70%	67%

Other details		Q3-2023*	Q2-2023*	Q3-2022	FY 22
	No of Clients	115	112	103	148
	1 Mn+	11	12	10	10
	5 Mn+	2	2	3	2

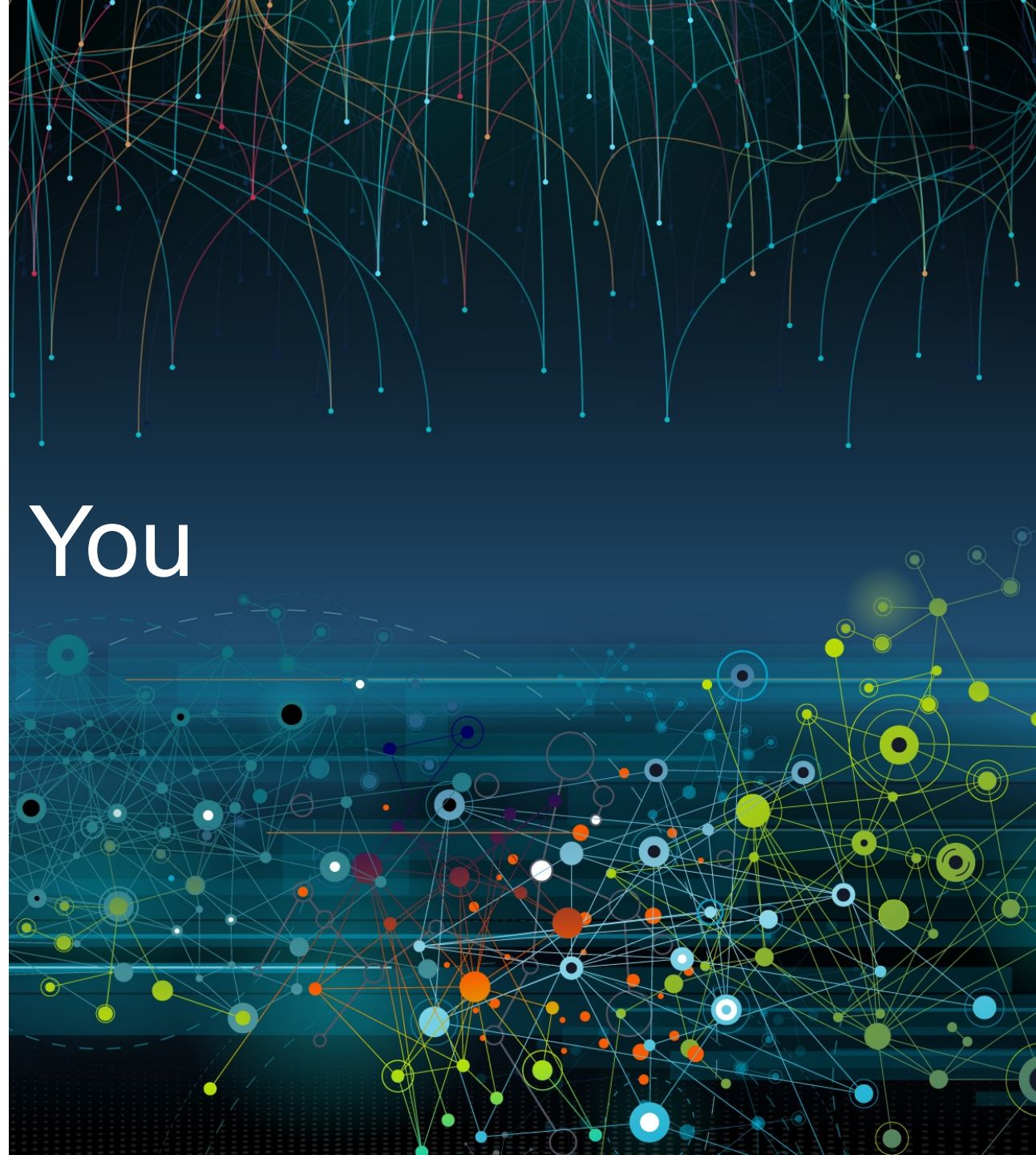
* Entities within the same group/conglomerate are considered as one client.

EMPLOYEE METRICS

People		Q3-2023	Q2-2023	Q3-2022	FY 22
	Total Headcount	1,182	1,173	1,055	1,022
	Technical	1,037	1,026	918	889
	Support	145	147	137	133



Thank You





Please contact us

If you have any questions,
or need assistance:

Mr. Ramachandra Magadi

Chief Financial Officer

Email: ram.magadi@mindteck.com

Telephone: +91 80 4154 8000