



Mindteck Investor Presentation

Quarter and Year ended March 31, 2022



Financial Performance

Performance Highlights – Consolidated Results

Q4 FY 2021-22:

- Revenue at ₹736.7 million (\$9.9 million) compared to ₹757.2 million (\$10.2 million) for the quarter ended December 31, 2021 and ₹725.7 million (\$9.8 million) for the quarter ended March 31, 2021.
- EBITDA for the quarter ended March 31, 2022, at ₹44.7 million (\$0.6 million) compared to ₹54.6 million (\$0.7 million) for the quarter ended December 31, 2021, and ₹74.1 million (\$1.0 million) for the quarter ended March 31, 2021.
- Profit After Tax (“PAT”) for the quarter ended March 31, 2022, at ₹29.9 million (\$0.4 million) as against ₹44.5 million (\$0.6 million) for the quarter ended December 31, 2021, and ₹54.2 million (\$0.7 million) for the quarter ended March 31, 2021.

Year to Date 2021-22:

- Revenue at ₹2,987.8 million (\$40.1 million), growth of 4.2% as against the preceding year.
- EBITDA at ₹207.7 million (\$2.8 million), growth of 5.9% as against the preceding year.
- Profit After Tax (“PAT”) at ₹333.1 million (\$4.5 million), includes exceptional income of ₹181.8 million recognised in Q1 2022, compared to ₹108.6 million (\$1.5 million) in the preceding year.

Performance Highlights – Consolidated Results

SEQUENTIAL Q4'22 VS Q3'22

Amount in ₹ million

SI No.	Particulars	Q4'22 (audited)	Q3'22 (Unaudited)	Change%
1	Income:			
	a) Revenue	736.7	757.2	-2.7%
	b) Other income	16.5	10.5	57.1%
	Total Income (a+b)	753.2	767.7	-1.9%
2	Expenses:			
	a) Cost of hardware, software and technical sub-contractors	164.0	160.9	1.9%
	b) Employee benefits expense	478.8	470.5	1.8%
	c) Finance cost	2.4	2.1	14.3%
	d) Depreciation and amortization	12.7	11.6	9.5%
	e) Other expenses	49.2	71.2	-30.9%
	Total Expenses (a+b+c+d+e)	707.1	716.3	-1.3%
3	Profit Before Tax & Exceptional Items ("PBT") (1-2)	46.1	51.4	-10.3%
4	Exceptional Items	-	-	-
5	Profit Before Tax ("PBT") (3+4)	46.1	51.4	-10.3%
6	Tax expense	16.2	6.9	134.8%
7	Profit After Tax ("PAT") (5-6)	29.9	44.5	-32.8%

Performance Summary – Consolidated Results

YOY Q4'22 VS Q4'21

Amount in ₹ million

Sl No.	Particulars	Q4'22 (audited)	Q4'21 (audited)	Change%
1	Income:			
	a) Revenue	736.7	725.7	1.5%
	b) Other income	16.5	4.5	266.7%
	Total Income (a+b)	753.2	730.2	3.1%
2	Expenses:			
	a) Cost of hardware, software and technical sub-contractors	164.0	132.4	23.9%
	b) Employee benefits expense	478.8	466.3	2.7%
	c) Finance cost	2.4	3.2	-25.0%
	d) Depreciation and amortization	12.7	14.8	-14.2%
	e) Other expenses	49.2	52.9	-7.0%
	Total Expenses (a+b+c+d+e)	707.1	669.6	5.6%
3	Profit Before Tax & Exceptional Items ("PBT") (1-2)	46.1	60.6	-23.9%
4	Exceptional Items	-	-	-
5	Profit Before Tax ("PBT") (3+4)	46.1	60.6	-23.9%
6	Tax expense	16.2	6.4	153.1%
7	Profit After Tax ("PAT") (5-6)	29.9	54.2	-44.8%

Performance Summary – Consolidated Results

YTD FY 22 Vs. YTD FY 21

Amount in ₹ million

SI No.	Particulars	YTD Q4'22 (audited)	YTD Q4'21 (audited)	Change%
1	Income:			
	a) Revenue	2,987.8	2,867.2	4.2%
	b) Other income	50.7	45.5	11.4%
	Total Income (a+b)	3,038.5	2,912.7	4.3%
2	Expenses:			
	a) Cost of hardware, software and technical sub-contractors	636.8	491.1	29.7%
	b) Employee benefits expense	1,889.0	1,947.8	-3.0%
	c) Finance cost	9.2	16.5	-44.2%
	d) Depreciation and amortization	50.2	63.9	-21.4%
	e) Other expenses	254.3	232.1	9.6%
	Total Expenses (a+b+c+d+e)	2,839.5	2,751.4	3.2%
3	Profit Before Tax & Exceptional Items ("PBT") (1-2)	199.0	161.3	23.4%
4	Exceptional Items*	181.8	-	(a)
5	Profit Before Tax ("PBT") (3+4)	380.8	161.3	136.1%
6	Tax expense	47.7	52.7	-9.5%
7	Profit After Tax ("PAT") (5-6)	333.1	108.6	206.7%

a) % change is not computed since there is no comparative available for the comparative period.

* Benefit received under Paycheck Protection Program (PPP)

Mindteck Fact Sheet

Fact Sheet

FINANCIAL PERFORMANCE HIGHLIGHTS

Amount in ₹ million

Highlights (INR)		Q4-2022	Q3-2022	Q4-2021	Growth %		FY 22	FY 21	Growth %
					QoQ	YoY			
	Revenue	736.7	757.2	725.7	-2.7%	1.5%	2,987.8	2,867.2	4.2%
	EBITDA	44.7	54.6	74.1	-18.1%	-39.7%	207.7	196.2	5.9%
	PAT	29.9	44.5	54.2	-32.8%	-44.8%	333.1	108.6	206.7%

Amount in \$ million

Highlights (USD)		Q4-2022	Q3-2022	Q4-2021	Growth %		FY 22	FY 21	Growth %
					QoQ	YoY			
	Revenue	9.9	10.2	9.8	-3.0%	1.4%	40.1	38.7	3.8%
	EBITDA	0.6	0.7	1.0	-18.4%	-39.8%	2.8	2.6	5.4%
	PAT	0.4	0.6	0.7	-33.0%	-44.9%	4.5	1.5	205.5%

Exchange Rate		Q4-2022	Q3-2022	Q4-2021	FY 22	FY 21
	Average (P&L) USD/INR	74.3	74.0	74.2	74.4	74.1

Fact Sheet

REVENUE METRICS

Geography		Q4-2022	Q3-2022	Q4-2021	FY 22	FY 21
	USA	61%	60%	63%	59%	67%
	IMEA	8%	8%	7%	9%	7%
	Europe	17%	18%	15%	18%	12%
	APAC	14%	14%	15%	14%	14%

Delivery Centers		Q4-2022	Q3-2022	Q4-2021	FY 22	FY 21
	USA	53%	52%	55%	52%	58%
	India	12%	12%	13%	13%	13%
	Singapore	8%	8%	9%	8%	9%
	Malaysia	6%	6%	5%	6%	5%
	UK	14%	14%	11%	14%	9%
	Germany	3%	4%	3%	3%	2%
	Bahrain	4%	4%	4%	4%	4%

Fact Sheet

REVENUE METRICS

Project Type		Q4-2022	Q3-2022	Q4-2021	FY 22	FY 21
	Time and Material	99%	93%	94%	95%	95%
	Fixed	1%	7%	6%	5%	5%
Services		Q4-2022	Q3-2022	Q4-2021	FY 22	FY 21
	Managed Service ("MS")	37%	41%	40%	39%	37%
	Professional Services ("PS")	63%	59%	60%	61%	63%
Revenue Mix-Efforts		Q4-2022	Q3-2022	Q4-2021	FY 22	FY 21
	Onsite	61%	58%	59%	59%	62%
	Offshore	39%	42%	41%	41%	38%
Revenue Mix-Business Offerings		Q4-2022	Q3-2022	Q4-2021	FY 22	FY 21
	Talent Management	44%	43%	49%	43%	55%
	Product Engineering	37%	36%	31%	37%	26%
	Information Technology Services	19%	21%	20%	20%	19%

Fact Sheet

CLIENT METRICS

Clients		Q4-2022	Q3-2022	Q4-2021	FY 22	FY 21
	Top 5	56%	60%	44%	55%	53%
	Top 10	70%	70%	59%	67%	69%

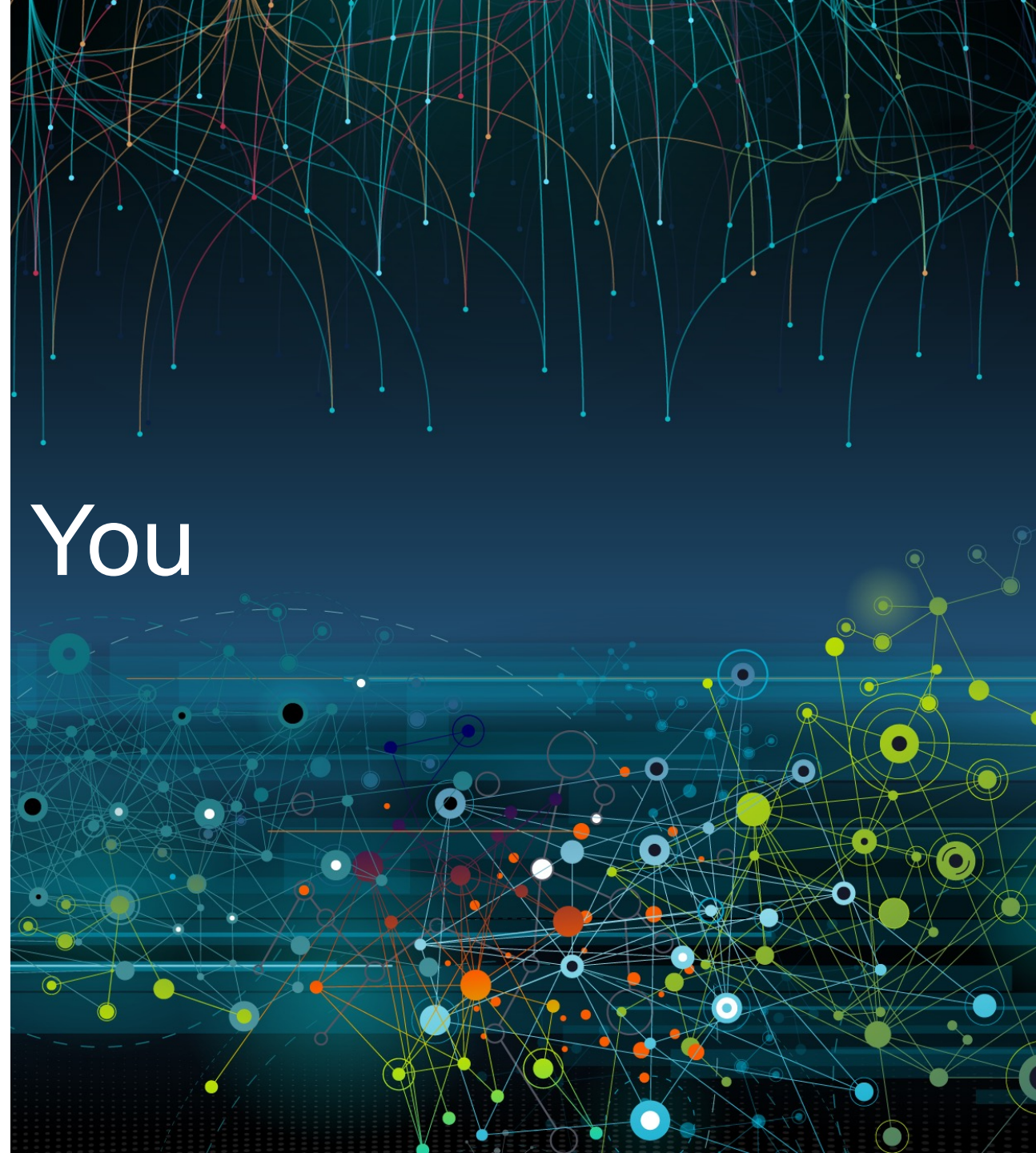
Other details		Q4-2022	Q3-2022	Q4-2021	FY 22	FY 21
	No of Clients	117	103	101	148	104
	1 Mn+	10	10	10	10	10
	5 Mn+	2	3	2	2	2

EMPLOYEE METRICS

People		Q4-2022	Q3-2022	Q4-2021	FY 22	FY 21
	Total Headcount	1,090	1,055	1,021	1,022	1,021
	Technical	952	918	880	889	880
	Support	138	137	141	133	141



Thank You





Please contact us

If you have any questions,
or need assistance:

Mr. Ramachandra Magadi

Chief Financial Officer

Email: ram.magadi@mindteck.com

Telephone: +91 80 4154 8000