

K.P. ENERGY LIMITED

CIN: L40100GJ2010PLC059169

KPEL/INV/PPT/Q1FY25/501

August 14, 2024

To,
BSE Limited
Phiroze Jeejeebhoy Towers,
Dalal Street, Mumbai - 400001

Ref: Scrip Code: 539686

Sub: Investor Presentation/Key highlights of Q1FY25 performance

Dear Sir,

Apropos the captioned subject, please find attached herewith the Investor Presentation along with the performance key highlights of the quarter ended June 30, 2024.

This is for your information and records.

Thanking You,

Yours faithfully,

For K.P. Energy Limited

Karmit Sheth
Company Secretary & Compliance Officer

Encl.: a/a

Reg. Office:

'KP House', Opp. Ishwar Farm Junction BRTS, Near Bliss IVF Circle,
Canal Road, Bhatar, Surat - 395017, Gujarat, India.

Phone: +91-261-2234757, Fax: +91-261-2234757

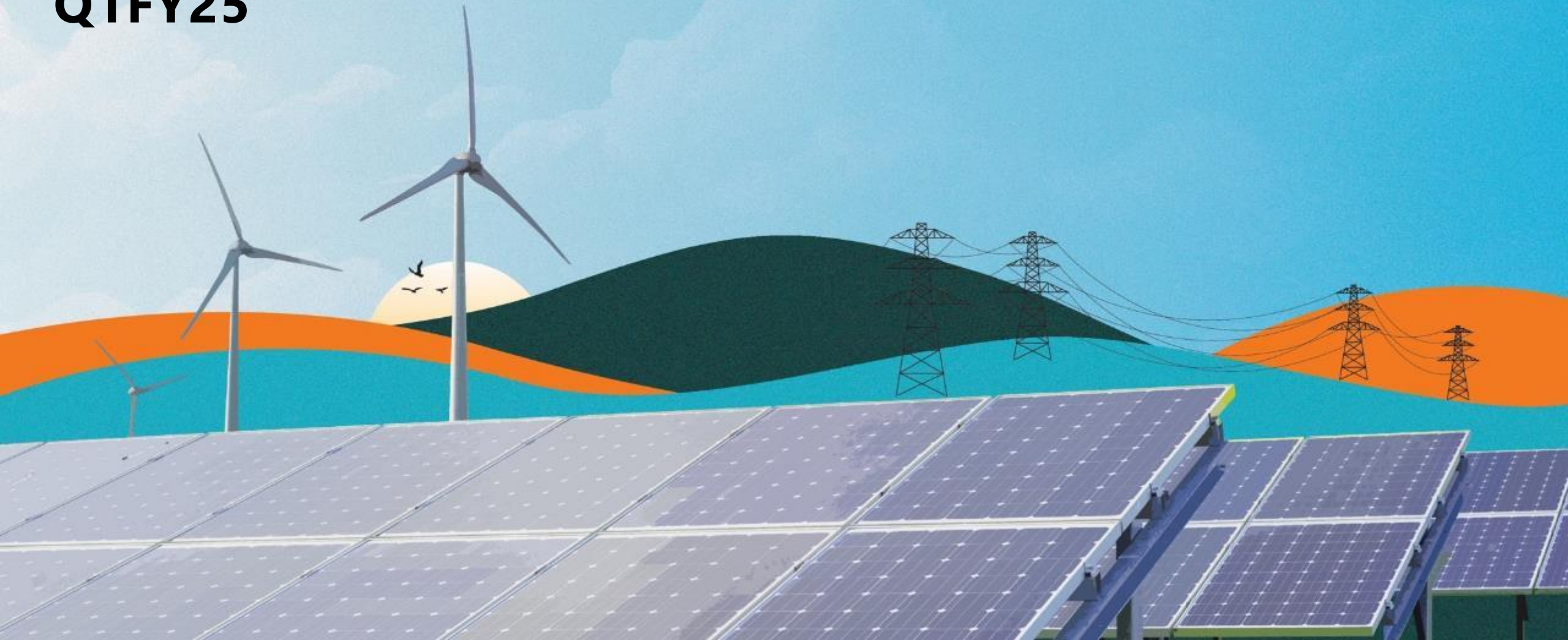
E-mail: info@kpenergy.in, Website: www.kpenergy.in

ISO 14001:2015, ISO 9001:2015 and ISO 45001: 2018 Certified Company

BSE Listed Company

KP ENERGY LIMITED

EARNINGS PRESENTATION Q1FY25



Inside this *Presentation*

Company Snapshot	03	Supplementing Vertical	11
Q1FY25 Financial Highlights	04	KP-NOC	12
Income Statement Summary (Consolidated)	05	Light Detection and Ranging (LIDAR) technology	13
KP Energy's Growth Trajectory	06	Growth of Renewable Energy in India	14
Growth Avenues	07	Market Statistics	15
Company Overview	08	Glossary	16
Business Model	09	Contact Us	17
EPCC Scope of Services	10	Disclaimer	18



Company Snapshot

KP Energy Limited is Gujarat's prominent balance of plant solution provider in Wind Industry engaged, from conceptualization till the commissioning of a wind energy & wind-solar hybrid power project.

#1

Gujarat's #1 BOP solutions provider for Wind Projects and Wind & Solar Hybrid Projects

1+ GW

Projects in Hand totaling 1,009+ MW

840+ MW

Capacity energized till date including CTU and STU projects

520+ MW

Total O&M Portfolio

19.9 MW IPP

Operational consisting of 4 wind energy assets having capacity of 2.1 MW each and 11.5 MW dc solar power projects**

₹2,551 CR

Market Capitalization as of 14th August 2024

1,000+

Qualified, experienced and committed team of 1,000* people, across technical, commercial and corporate functions

10+ GW

Ambitious Group target by 2030

KP Energy OMS

O&M services for BOP infrastructure developed by KP Energy are managed under wholly-owned subsidiary KP Energy OMS Limited

BSE Listed

Scrip Code: 539686

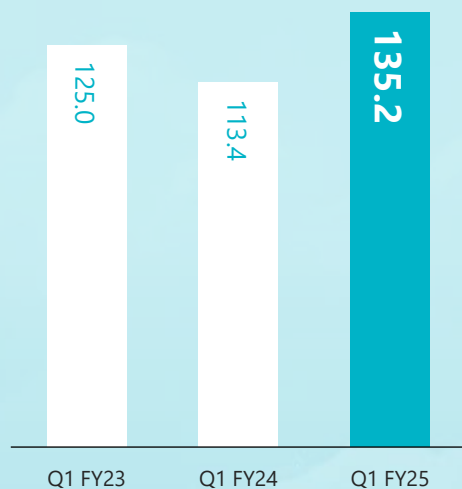
**Note – Consolidated Basis
*Note – Consolidated Workforce

Q1FY25 Financial Highlights

TOTAL REVENUE

(₹ IN CRORES)

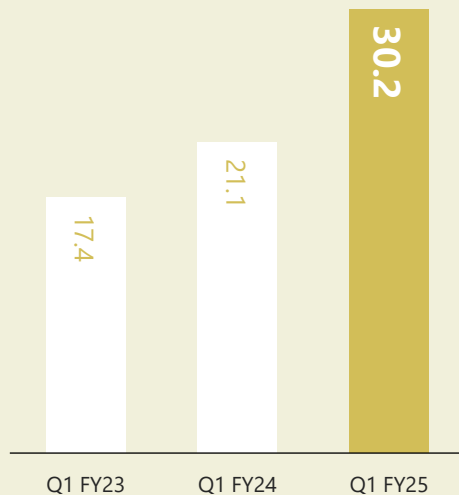
↑ 19%
YOY



EBITDA

(₹ IN CRORES)

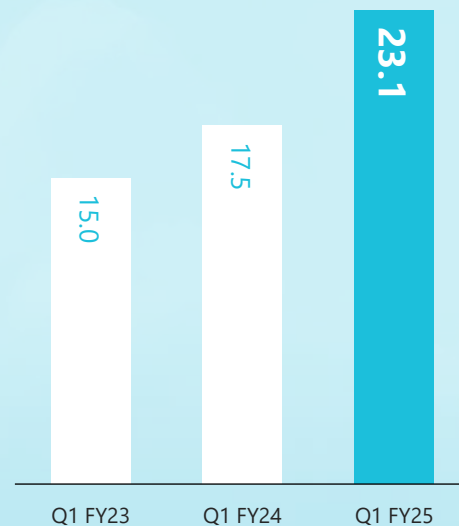
↑ 43%
YOY



PBT

(₹ IN CRORES)

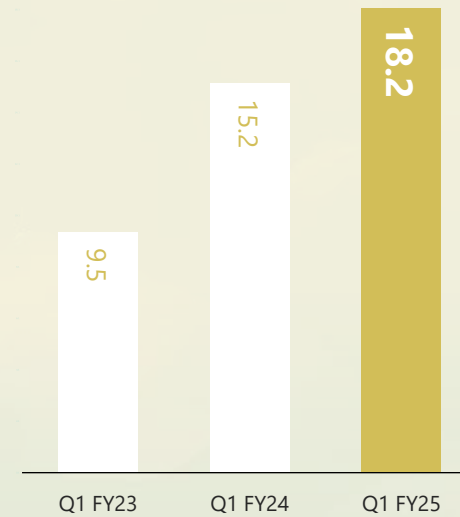
↑ 32%
YOY



PAT

(₹ IN CRORES)

↑ 19%
YOY



Note – Consolidated figures

Income Statement Summary

(Consolidated)

(₹ In Crores)

Particulars	Q1 FY25	Q1 FY24	YOY% change
	Unaudited	Unaudited	
REVENUE FROM OPERATIONS	127.2	112.9	12.7%
TOTAL INCOME	135.2	113.4	19.2%
TOTAL OPERATING EXPENSE	104.8	91.9	14.0%
EBITDA	30.2	21.1	43.1%
EBITDA MARGINS %	22.3%	18.6%	19.9%
INTEREST COST	4.8	1.9	152.6%
DEPRECIATION AND AMORTISATION	2.4	2.0	20.0%
PROFIT BEFORE TAXES	23.1	17.5	32.0%
PROFIT AFTER TAXES	18.2	15.2	19.7%
EPS (₹)	2.73	2.28	19.7%

↑ **19%**

Q1FY25 Total Income at ₹135.2 Crore as compared to ₹113.4 Crore in Q1FY24

↑ **43%**

Q1FY25 EBITDA at ₹30.2 Crore as compared to ₹21.1 Crore in Q1FY24

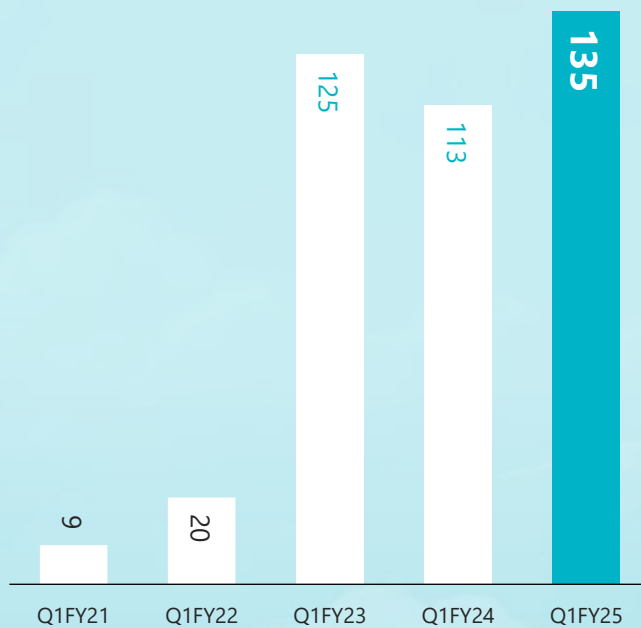
↑ **32%**

Q1FY25 PBT at ₹23.1 Crore as compared to ₹17.5 Crore in Q1FY24

KP Energy's Growth Trajectory

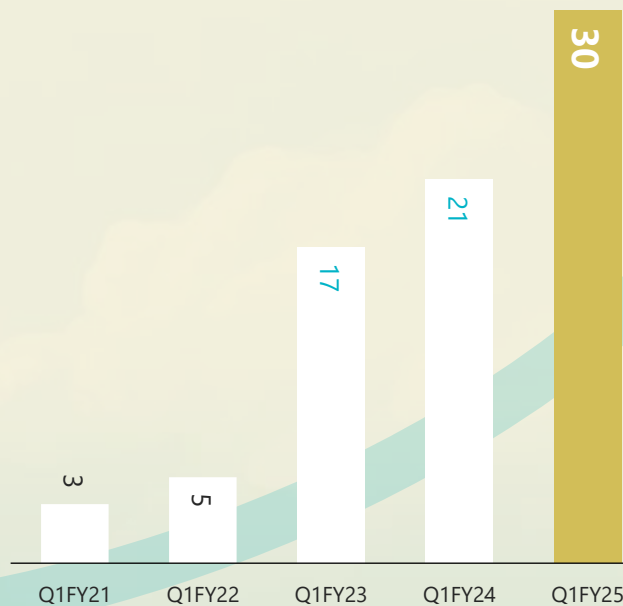
TOTAL REVENUE

(₹ IN CRORES)



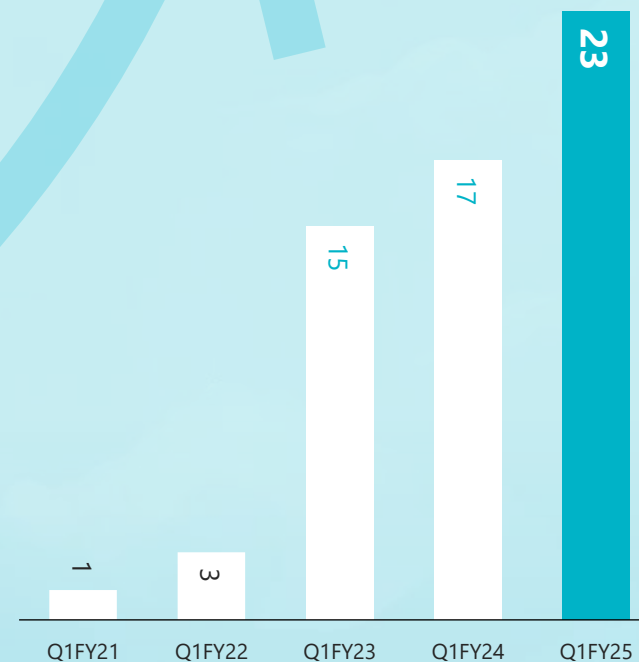
EBIDTA MARGIN

(₹ IN CRORES)



PBT MARGIN

(₹ IN CRORES)



Growth Avenues



IPP Portfolio

KP Energy has the consolidated IPP portfolio of 19.9 MW.

Additionally, the Company is developing a 30 MW Wind IPP Project is also under development.

To further expand its IPP portfolio, the Company has applied for 100 MW connectivity to develop a wind power project connected to the Inter-State Transmission System (ISTS).



Robust Business Pipeline

Current order book exceeding 1GW, highlighting strong demand for sustainable renewable energy projects.

The strong order book of the Company ensures continuous workflow and operational stability helping the Company engage in strategic planning towards future growth.



O&M Capabilities

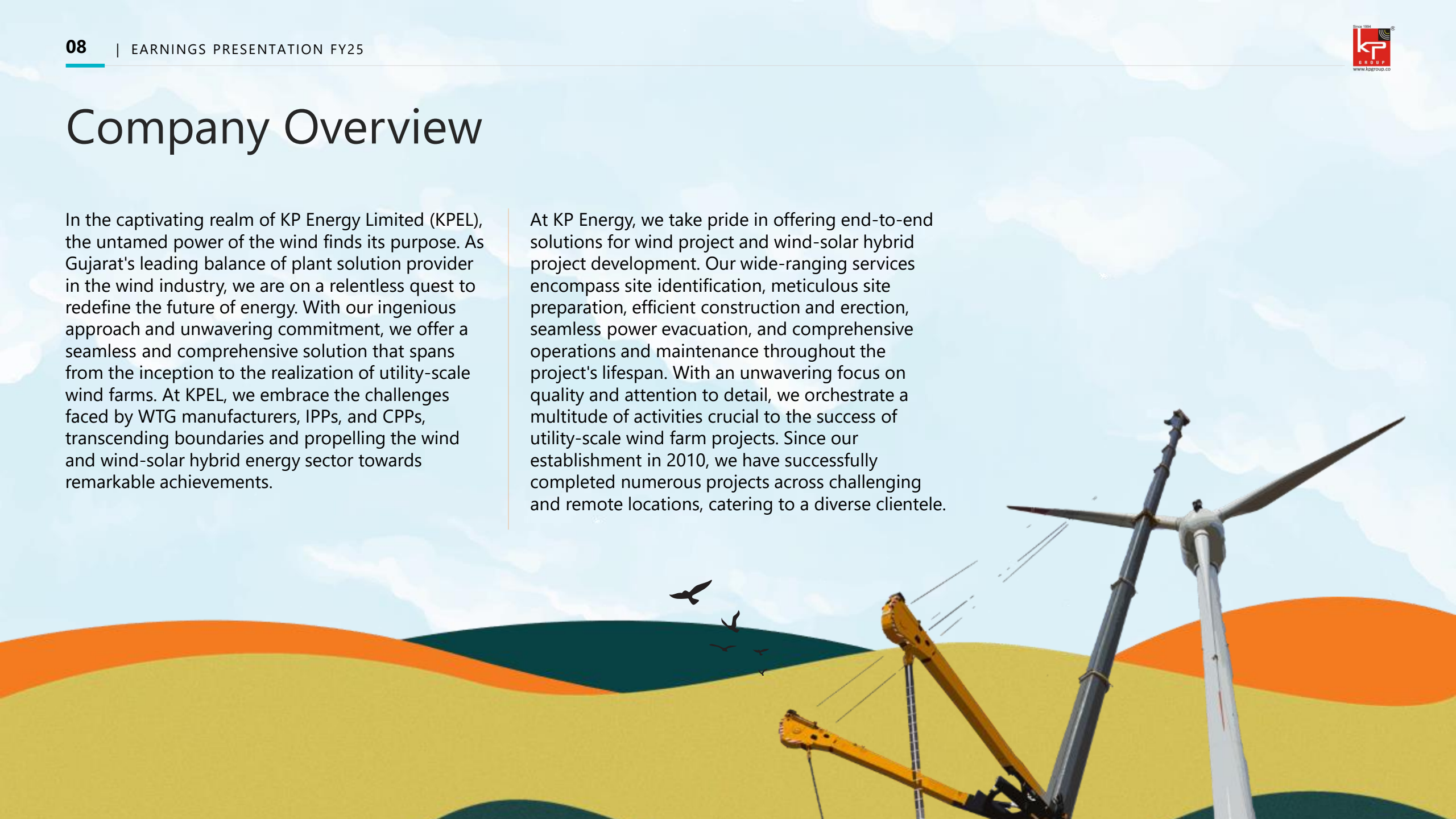
The O&M portfolio of KP Energy ensures the optimal performance of wind energy projects through proactive monitoring, regular servicing, and advanced predictive maintenance techniques.

The Team ensures maximum energy output, minimize downtime, and enhance the reliability of wind assets. By leveraging cutting-edge technology and industry expertise, we deliver efficient, cost-effective solutions that support sustainable energy production.

Company Overview

In the captivating realm of KP Energy Limited (KPEL), the untamed power of the wind finds its purpose. As Gujarat's leading balance of plant solution provider in the wind industry, we are on a relentless quest to redefine the future of energy. With our ingenious approach and unwavering commitment, we offer a seamless and comprehensive solution that spans from the inception to the realization of utility-scale wind farms. At KPEL, we embrace the challenges faced by WTG manufacturers, IPPs, and CPPs, transcending boundaries and propelling the wind and wind-solar hybrid energy sector towards remarkable achievements.

At KP Energy, we take pride in offering end-to-end solutions for wind project and wind-solar hybrid project development. Our wide-ranging services encompass site identification, meticulous site preparation, efficient construction and erection, seamless power evacuation, and comprehensive operations and maintenance throughout the project's lifespan. With an unwavering focus on quality and attention to detail, we orchestrate a multitude of activities crucial to the success of utility-scale wind farm projects. Since our establishment in 2010, we have successfully completed numerous projects across challenging and remote locations, catering to a diverse clientele.



Business Model

EPCC

KPEL offers a unique value proposition that has been designed to address all the issues that WTG manufacturers, IPPs, and CPPs face when setting up a wind farm. We provide end-to-end BOP solutions for Wind Farm & Wind-Solar Hybrid Projects, from idea to commissioning.

VALUE DELIVERED

KPEL acts as a one-stop solution provider for its client, the entire responsibility and accountability for execution of a utility-scale Wind Farm & Wind-Solar Hybrid Projects is undertaken by the Company.

OUTCOME

Projects are executed on-time and with optimal resources.

O&M

For the BOP section of the project, KPEL through its wholly owned subsidiary KP Energy OMS Limited provides comprehensive operations and maintenance services.

VALUE DELIVERED

KPEL undertakes O&M services for the BOP portion, for its projects, so that its clients don't have to engage in the same.

OUTCOME

Energised wind assets are maintained for smooth functioning over their lifecycle.

IPP

At Wind Farm & Wind-Solar Hybrid Projects developed by KPEL, the Company owns power generation assets with a total capacity of 19.9 MW, including 8.4 MW wind generation assets and 11.5 MWdc solar power projects.

VALUE DELIVERED

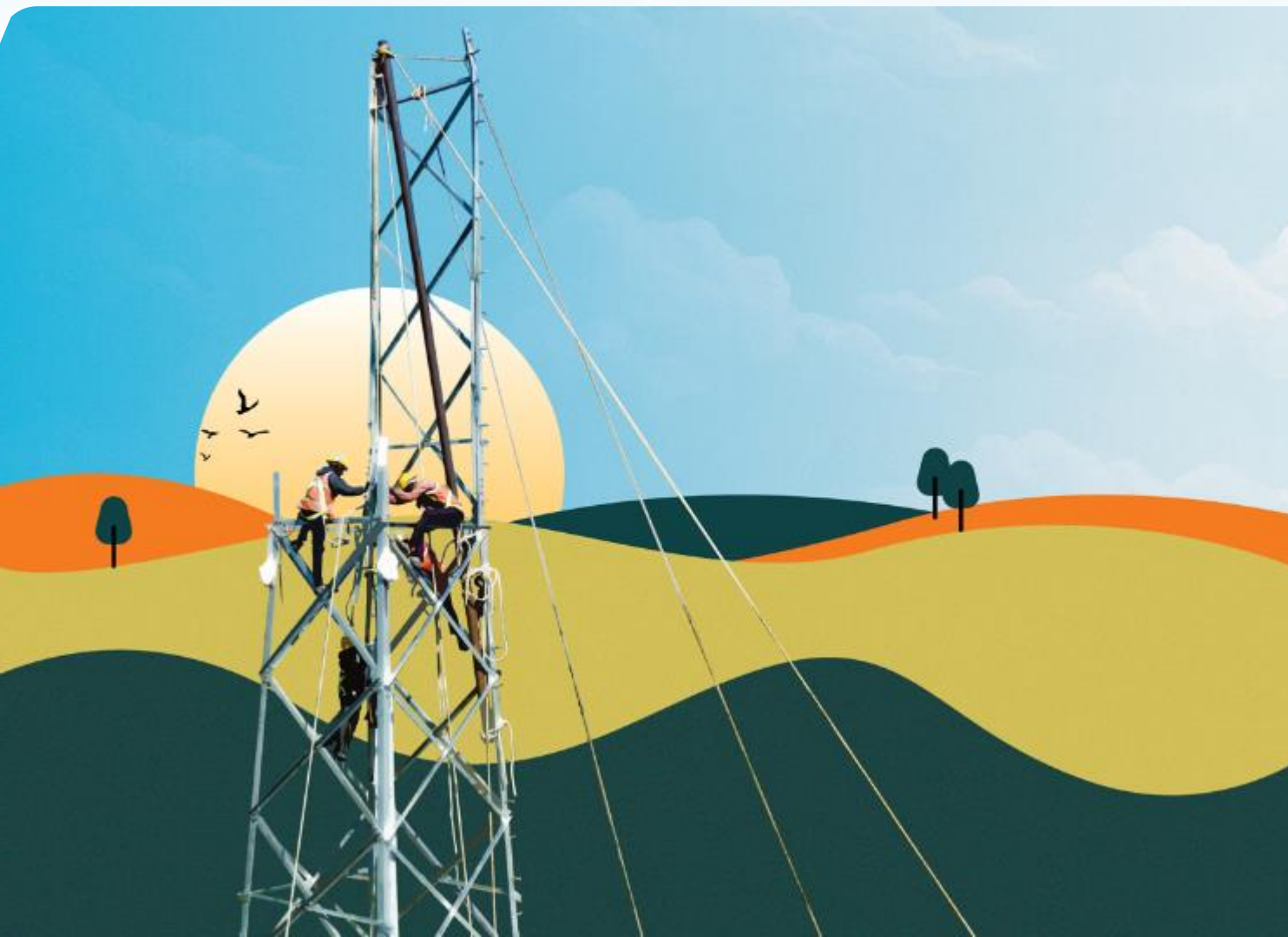
Recurring, annuity revenue stream for the Company.

OUTCOME

Complementing & durable cash flows from our annuity revenue stream of IPP strengthens the resilience of our overall business model.



EPCC Scope of Services



SITE IDENTIFICATION & ACQUISITION

Our key competence is identifying and acquiring good windy sites for utility scale wind farms



SITE PREPARATION

We construct access roads and fetch ROWs in tough and challenging situations



CONSTRUCTION & ERECTION

WTG civil foundation, 33 kV USS & internal network as well as logistics, installation & erection of Wind Farms and Wind-Solar Hybrid Power projects.



POWER EVACUATION

We undertake EPCC of 33/66 & 33/220 kv windfarm pooling substation and EHV lines



PERMITS & APPROVALS

We obtain all requisite permits & approvals from government authorities for the project execution and its operational life thereof



OPERATIONS & MAINTENANCE

O&M services for the entire BOP portion of wind farm for its operational life

Supplementing Verticals

INDEPENDENT POWER PRODUCERS (IPP)



19.9 MW

KP Energy has its own renewable energy generation capacity of 19.9 MW including wind energy assets of 8.4 MW (4*2.1 MW) and 11.5 MWdc solar power plants.



Dual Objectives of becoming an IPP

Strategic set-up: providing assurance to clients about the quality of assets and annuity-based income to the Company

OPERATIONS & MAINTENANCE (O&M)



O&M services

Provides O&M services for Balance of Plant (BOP) portion of windfarms through its wholly owned subsidiary KP Energy OMS Limited



EPCC directly drives the growth of this segment.

EPCC directly drives the growth of this segment. However, the existing portfolio creates an annuity-based revenue stream for the Company



KP-NOC (Network Operations Centre)

Our commitment to maximizing the efficiency of Wind assets is at the forefront of our operations. We take pride in our innovative approach to Operations and Maintenance (O&M), leveraging a state-of-the-art Centralized Monitoring System (CMS) and a dedicated Network Operations Center (NOC). This system enables us to monitor, analyze, and address any issues promptly, leading to increased asset efficiency and reduced downtime.

The key benefits of implementing NOC center are as follows:

- Continuous Monitoring for Proactive Management
- Predictive Maintenance for Optimal Performance
- 24/7 Operations from the Network Operations Center
- Efficient Resource Allocation
- Automated Reporting for Informed Decision-Making
- Remote Troubleshooting and Support
- Continuous Improvement through Data Insights



Light Detection and Ranging (LIDAR) technology

The company has successfully integrated Windcube LIDAR (Light Detection and Ranging) technology to enhance its wind resource assessment and analysis capabilities. This advanced technology is pivotal for precise evaluation of site suitability, calibration, and power curve measurements. Windcube LIDAR provides several unique features that contribute significantly to the evolution of operational continuity in wind assessments.

Key features and benefits of Windcube LIDAR include:

- High-Resolution Data Collection
- Enhanced Site Suitability Analysis
- Improved Calibration
- Robust Power Curve Measurements
- Advanced Data Analytics
- Versatile Wind Data Exploration



Growth of Renewable Energy in India



GOVERNMENT SUPPORT

- The Indian government has installed over 800 wind-monitoring stations all over the country through the National Institute of Wind Energy (NIWE)
- As per Ministry of Power, Wind RPO to increase by approximately 54% in FY2024-2025
- Indian govt. will issue bids with a cumulative capacity of about 8 GW every calendar year from 2023 up to 2030



STORAGE SOLUTIONS

- About 3 GW of standalone storage and around 10 GW of storage-linked projects with about 2 GW of storage were auctioned in the past two fiscal years
- VGF and PLI is expected to decrease the cost of storage. VGF has been finalized for 4000 MWh while PLI will boost domestic manufacturing and reduce dependency of imports



INCREASED INSTALLATIONS

- India added 3.2 GW of total wind power capacity in 2023-24; the growth has increased as first seven months of 2024 saw an addition of 2.3 GW
- Wind & Solar encapsulate 80% of renewable capacity in India; Solar leads at ~87GW followed by wind at ~47 GW

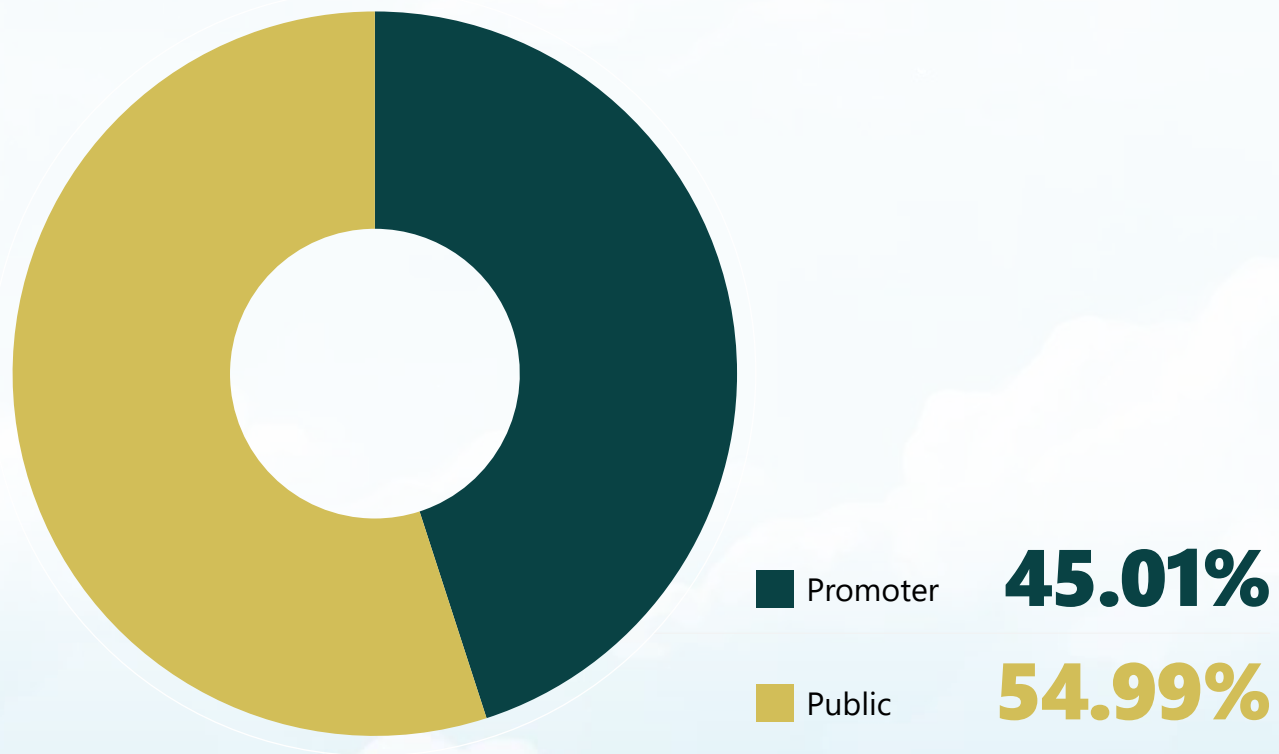


C&I DEMAND

- Apart from the key drivers of high grid tariffs and corporate climate commitments, the C&I renewable market in India is also witnessing an increase in renewables' uptake due to concessional credit lines, and open access and net metering regulations
- Further, decarbonization ambition (apart from BEE) would also provide an additional boost to the C&I demand

Market Statistics

SHAREHOLDING SUMMARY FOR KP ENERGY LIMITED



Shareholding Data as on 30th June 2024

CURRENT MARKET PRICE	₹ 382.55
52 WEEK HIGH/LOW	₹ 513.90/110.77
MARKET CAPITALIZATION	₹ 2,551.23 Cr
SHARES OUTSTANDING	6.67 Cr
BSE SCRIP CODE	539686

Market Price Data as on 14th August 2024

Glossary

BOP Balance of Plant

O&M Operations & Maintenance

WTG Wind Turbine Generators

EPCC Engineering, Procurement,
Construction and Commissioning

IPP Independent Power Producers

MW Mega Watt

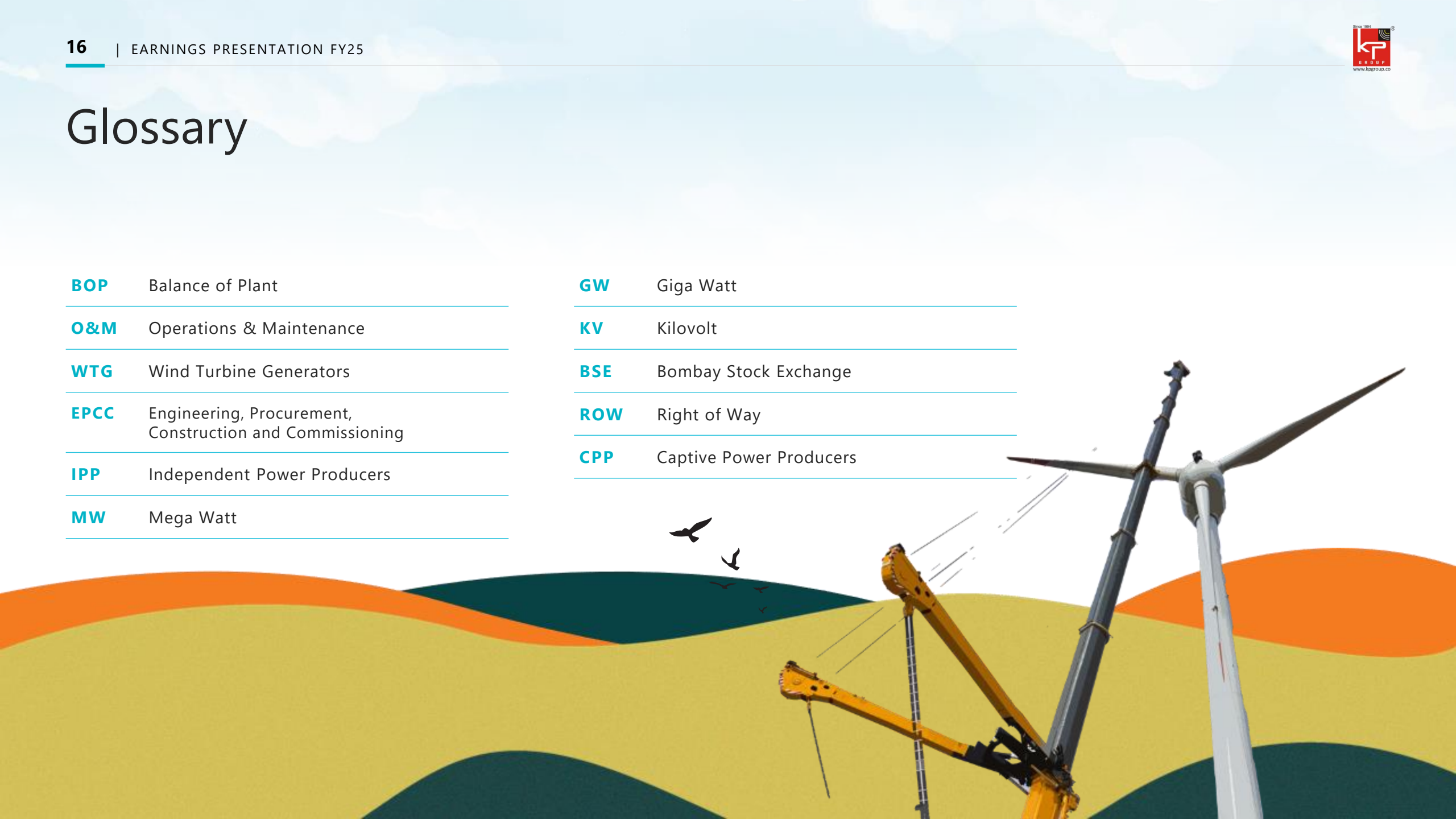
GW Giga Watt

KV Kilovolt

BSE Bombay Stock Exchange

ROW Right of Way

CPP Captive Power Producers




Contact Us


KP ENERGY LIMITED

OFFICE ADDRESS:

'KP House', Opp Ishwar Farm Junction BRTS,
Near Bliss IVF Circle, Canal Road, Bhatar,
Surat - 395 017, Gujarat, India


 +91 261 2234757

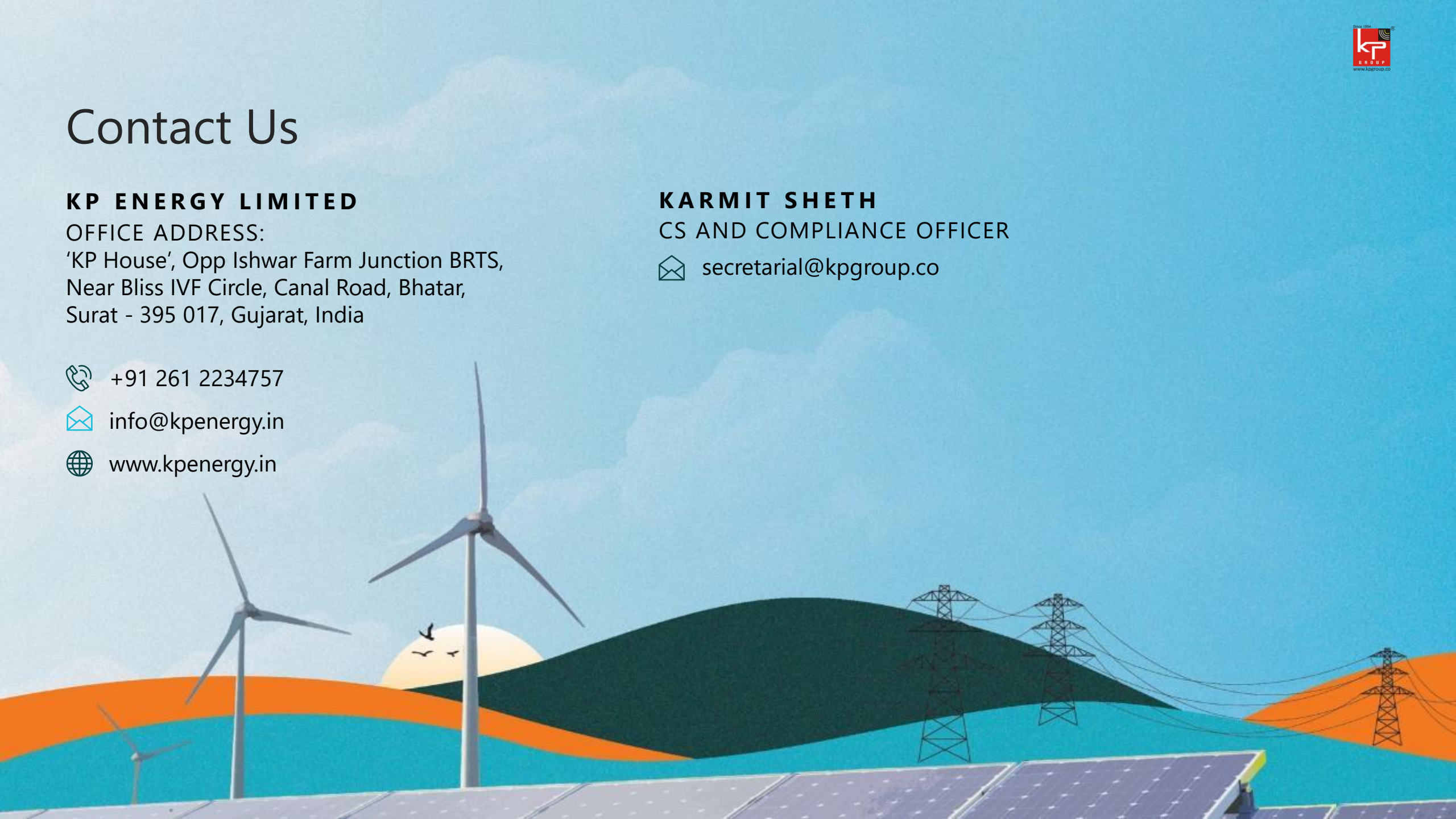
 info@kpenergy.in

 www.kpenergy.in

KARMIT SHETH

CS AND COMPLIANCE OFFICER

 secretarial@kpgroup.co



Disclaimer

No representation or warranty, express or implied, is made as to, and no reliance should be placed on, the fairness, accuracy, completeness or correctness of the information or opinions contained in this presentation. Such information and opinions are in all events not current after the date of this presentation. Certain statements made in this presentation may not be based on historical information or facts and may be “forward looking statements” based on the currently held beliefs and assumptions of the management of KP Energy Limited (“Company” or “KP Energy”), which are expressed in good faith and in their opinion reasonable, including those relating to the Company’s general business plans and strategy, its future financial condition and growth prospects and future developments in its industry and its competitive and regulatory environment. Forward-looking statements involve known and unknown risks, uncertainties and other factors, which may cause the actual results, financial condition, performance or achievements of the Company or industry results to differ materially from the results, financial condition, performance or achievements expressed or implied by such forward-looking statements, including future changes or developments in the Company’s business, its competitive environment and political, economic, legal and social conditions. Further, past performance is not necessarily indicative of future results. Given these risks, uncertainties and other factors, viewers of this presentation are cautioned not to place undue reliance on these forward- looking statements. The Company disclaims any obligation to update these forward-looking statements to reflect future events or developments. This presentation is for general information purposes only, without regard to any specific objectives, financial situations or informational needs of any particular person. This presentation does not constitute an offer or invitation to purchase or subscribe for any securities in any jurisdiction. No part of it should form the basis of or be relied upon in connection with any investment decision or any contract or commitment to purchase or subscribe for any securities. This presentation may not be copied or disseminated, in whole or in part, and in any manner.

Note - All figures in the presentation rounded-off to first decimal.