

May 17, 2025

The Manager - Listing
National Stock Exchange of India Limited
(Scrip Symbol: PVRINOX)

The Manager – Listing
BSE Limited
(Scrip Code: 532689)

Sub: 4th Quarter & FY 2024-25 - Investor Presentation

Dear Sir/Madam,

In continuation to our letter dated May 12, 2025 with respect to the Investor update submitted with stock exchanges for 4th quarter and financial year ended on 31st March, 2025, please find attached the revised presentation on Investor update for the Fourth Quarter & Financial Year ended 31st March, 2025.

Kindly note that the only change made to the presentation was replacing the poster on the content line up slide from Aashiqui 3 to Kartik Aaryan and Sree Leela's Next. All the other slides of the presentation as reported earlier remains same without any change.

This is for your information and to all concerned.

Kindly take the same on record.

Thanking You.

Yours sincerely,
For **PVR INOX Limited**

Murlee Manohar Jain
SVP - Company Secretary
& Compliance Officer

Encl: A/a



PVR INOX

MAY 12th, 2025

INVESTOR UPDATE
Q4 & 12M FY'25

This presentation has been prepared for general information purposes in respect of PVR INOX Limited (“Company”) together with its subsidiaries and joint venture (together, with the “Company”, the “Group”) only, without regard to any specific objectives, suitability, financial situations and needs of any particular person and does not constitute any recommendation or form part of any offer or invitation, directly or indirectly, in any manner, or inducement to sell or issue, or any solicitation of any offer to purchase or subscribe for, any securities of the Company in any jurisdiction, nor shall it or any part of it or the fact of its distribution form the basis of, or be relied on in connection with, any contract or commitment therefor. This presentation does not solicit any action based on the material contained herein. Nothing in this presentation is intended by the Group to be construed as legal, accounting or tax advice.

This presentation has not been approved and will not or may not be reviewed or approved by any statutory or regulatory authority in India or by any Stock Exchange in India.

This presentation contains certain forward-looking statements relating to the business, financial performance, strategy and results of the Group and/ or the industry in which it operates. Forward-looking statements are statements concerning future circumstances and results, and any other statements that are not historical facts, sometimes identified by the words including, without limitation “believes”, “expects”, “predicts”, “intends”, “projects”, “plans”, “estimates”, “aims”, “foresees”, “anticipates”, “targets”, and similar expressions. The forward-looking statements, including those cited from third party sources, contained in this presentation are based on numerous assumptions and are uncertain and subject to risks. A multitude of factors including, but not limited to, changes in demand, competition and technology, can cause actual events, performance or results to differ significantly from any anticipated development. Neither the Group nor its affiliates or advisors or representatives nor any of its or their parent or subsidiary undertakings or any such person's officers or employees guarantees that the assumptions underlying such forward-looking statements are free from errors nor does either accept any responsibility for the future accuracy of the forward-looking statements contained in this presentation or the actual occurrence of the forecasted developments. Forward-looking statements speak only as of the date of this presentation and are not guarantees of future performance. As a result, the Group expressly disclaims any obligation or undertaking to release any update or revisions to any forward-looking statements in this presentation as a result of any change in expectations or any change in events, conditions, assumptions or circumstances on which these forward looking statements are based. Given these uncertainties and other factors, viewers of this presentation are cautioned not to place undue reliance on these forward-looking statements. Certain numbers in these presentations and materials have been subject to routine rounding off and accordingly figures shown as total in tables and diagrams may not be an arithmetic aggregation of the figures that precede them.

The information contained in these presentations and materials are only current as of the dates specified herein and have not been independently verified. None of the Group, its directors, promoters or affiliates, nor any of its or their respective employees, advisers or representatives or any other person accepts any responsibility or liability whatsoever, whether arising in tort, contract or otherwise, for any errors, omissions or inaccuracies in such information or opinions or for any loss, cost or damage suffered or incurred howsoever arising, directly or indirectly, from any use of this presentation or its contents or otherwise in connection with this presentation, and makes no representation or warranty, express or implied, for the contents of this presentation including its accuracy, fairness, completeness or verification or for any other statement made or purported to be made by any of them, or on behalf of them, and nothing in this presentation or at this presentation shall be relied upon as a promise or representation in this respect, whether as to the past or the future. Past performance is not a guide for future performance. The information contained in this presentation is current, and if not stated otherwise, made as of the date of this presentation. The Group undertakes no obligation to update or revise any information in this presentation as a result of new information, future events or otherwise. Any person/ party intending to provide finance/ invest in the shares/ businesses of the Group shall do so after seeking their own professional advice and after carrying out their own due diligence procedure to ensure that they are making an informed decision.

This presentation is not a prospectus, a statement in lieu of a prospectus, an offering circular, an advertisement or an offer document under the Companies Act, 2013, as amended, the Securities and Exchange Board of India (Issue of Capital and Disclosure Requirements) Regulations, 2018, as amended, or any other applicable law in India.

This presentation is strictly confidential and may not be copied or disseminated, reproduced, re-circulated, re-distributed, published or advertised in any media, website or otherwise, in whole or in part, and in any manner or for any purpose. Any unauthorized use, disclosure or public dissemination of information contained herein is prohibited. No person is authorized to give any information or to make any representation not contained in or inconsistent with this presentation and if given or made, such information or representation must not be relied upon as having been authorized by any person. Failure to comply with this restriction may constitute a violation of the applicable securities laws. Accordingly, any persons in possession of the aforesaid should inform themselves about and observe any such restrictions. By reviewing this presentation, you agree to be bound by the foregoing limitations. You may not repackage or sell the presentation. Information contained in a presentation hosted or promoted by the Group is provided “as is” without warranty of any kind, either expressed or implied, including any warranty of fitness for a particular purpose.

By accessing this presentation, you accept this disclaimer and any claims arising out of or in connection with this presentation shall be governed by the laws of India and only the courts in Gurugram, India, and no other courts shall have jurisdiction over the same.

Particulars	Slide No.
Key Highlights	5
Box Office Performance	7
Result Summary	11
Update on Key Strategic Initiatives	17
Screen Growth Update	23
Content Lineup	25

Key Financial Highlights

(INR Mn)	TOTAL INCOME	EBITDA & EBITDA%	PAT & PAT%
Q4, FY'25	12,853	250 1.9%	-1,058 -8.2%
Q4, FY'24	12,904	352 2.7%	-901 -7.0%
12M, FY'25	58,746	4,703 8.0%	-1,519 -2.6%
12M, FY'24	62,037	8,087 13.0%	1,143 1.8%

Note: Above financial numbers are after excluding the impact of Ind AS 116 - 'Leases'

Key Operating Highlights

	ADMITS (Mn)	ATP (INR)	SPH (INR)
Q4, FY'25	30.5	258	125
Q4, FY'24	32.6	233	129
	-6.3%	+10.5%	-3.5%
12M, FY'25	136.9	259	134
12M, FY'24	151.4	259	132
	-9.5%	0.0%	+1.5%

BOX OFFICE UPDATE

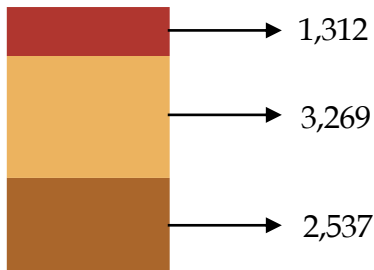


Box Office Performance in FY'25 Reflects Uneven Content Supply

PVR INOX GBOC (INR Mn)

7,118

- ★ ENGLISH
- ★ HINDI + HINDI DUBBED
- ★ REGIONAL



Q1 FY'25

ADMITS (Mn)

30.4



KALKI 2898 AD
(HINDI/TELUGU)
842 MN

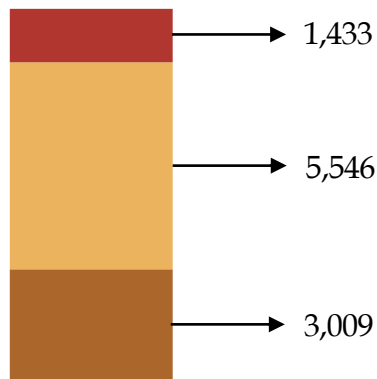


MUNJYA
(HINDI)
457 MN



GODZILLA x KONG: THE NEW EMPIRE
(ENGLISH)
385 MN

9,987



Q2 FY'25

38.8



STREE 2
(HINDI)
2,785 MN

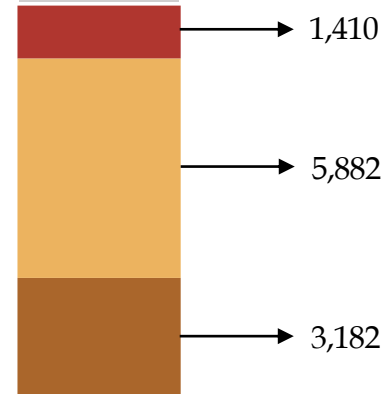


KALKI 2898 AD
(HINDI/TELUGU)
1,345 MN



DEADPOOL AND WOLVERINE
(ENGLISH)
863 MN

10,474



Q3 FY'25

37.3



PUSHPA 2
(HINDI/TELUGU)
3,211 MN

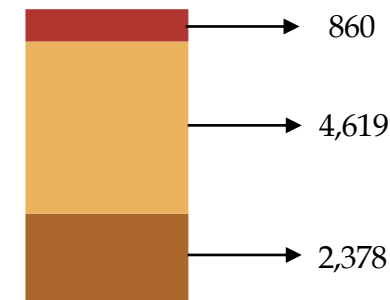


BHOOL BHULAIYA 3
(HINDI)
1,094 MN



SINGHAM AGAIN
(HINDI)
1,068 MN

7,858



Q4 FY'25

30.5



CHAAVA
(HINDI)
2,280 MN



SKY FORCE
(HINDI)
578 MN



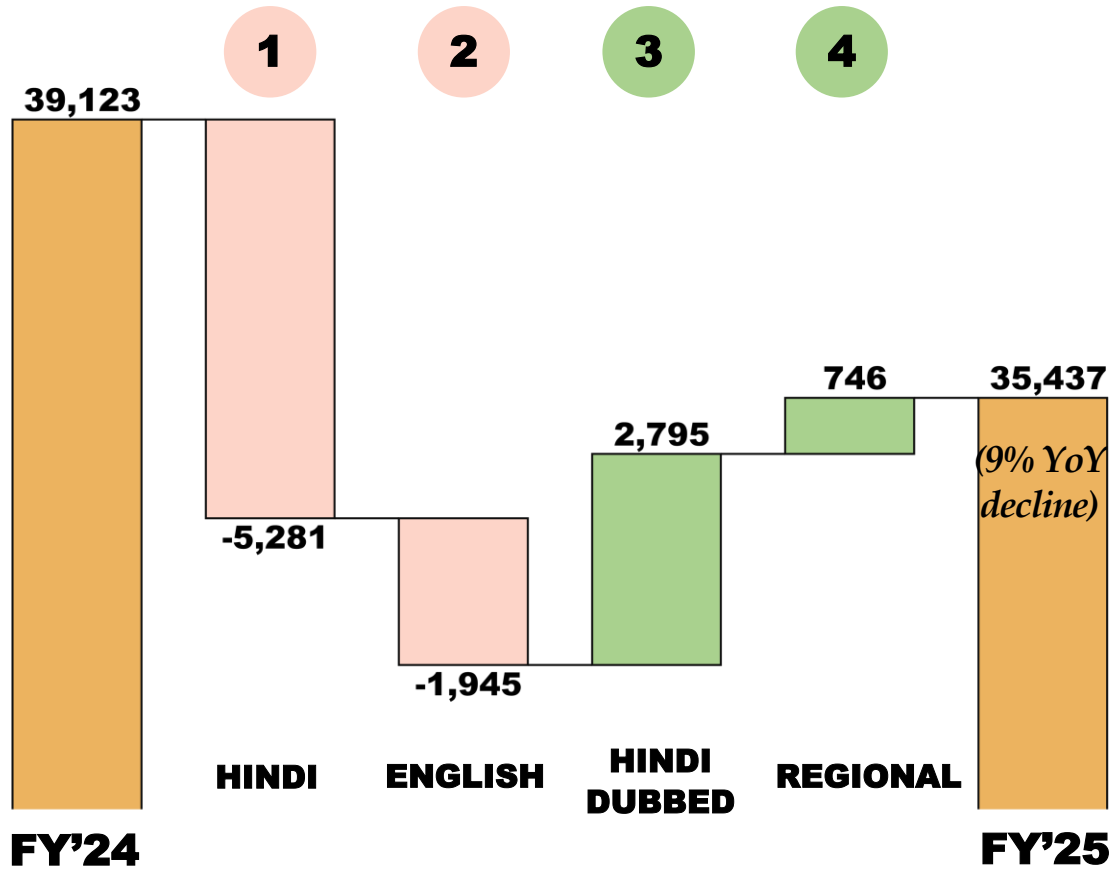
MUFASA: THE LION KING
(ENGLISH)
271 MN

TOP 3 MOVIES IN THE QUARTER*

Muted Bollywood & Hollywood Releases Impacted Overall GBOC

PVR INOX GBOC

(INR Mn)



Note: Chart not to scale

1 Hindi Box Office Declined by 26% due to:

- 14% drop in number of Bollywood titles
- Lack of Superstar movies
- Postponement of release dates

2 English Box Office Declined by 28% due to:

- Lingering impact of 2023-24 Hollywood strike resulting in 6% drop in number of English releases
- Lack of Tentpoles

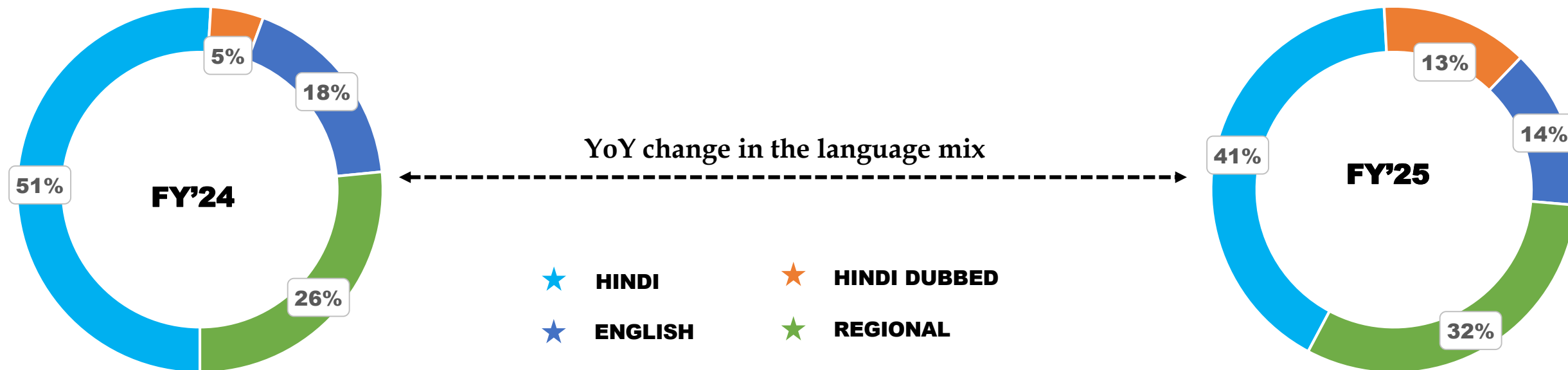
3 Hindi Dubbed Box Office Surged by 153%

- 'Pushpa 2' and 'Kalki' emerged as Pan India hits
- Indicates evolved consumer choices

4 Regional Box Office witnessed a 7% increase

Both Hindi & English Movies are expected to make a Strong Comeback in FY'26

PVR INOX : YoY Change in Language Mix



- **Hindi Box Office** share dropped from 51% to 41%. **Hindi Dubbed** increased from 5% to 13%
- **English Box Office** share dropped from 18% to 14%
- **Regional Box Office** share jumped from 26% to 32%

Result Summary (Consolidated) – Q4, FY'25 vs Q4, FY'24

Particulars (INR Mn)	Q4, FY'25			Q4, FY'24		
	Reported	Ind-AS 116 Impact	Ind-AS 116 Adjusted	Reported	Ind-AS 116 Impact	Ind-AS 116 Adjusted
Total Income	13,112	259	12,853	13,055	151	12,904
Expenses	9,667	-2,936	12,603	9,780	-2,772	12,552
EBITDA	3,445	3,195	250	3,275	2,923	352
EBITDA Margin	26.3%		1.9%	25.1%		2.7%
Depreciation & Amortization	3,161	1,949	1,212	3,028	1,906	1,122
EBIT	284	1,246	-962	247	1,017	-770
Finance Costs	1,959	1,506	453	1,999	1,546	453
PBT	-1,677	-260	-1,417	-1,752	-529	-1,223
Corporate Tax	-424	-65	-359	-455	-133	-322
PAT	-1,253	-195	-1,058	-1,297	-396	-901
PAT Margin	-9.6%		-8.2%	-9.9%		-7.0%
EPS - Basic (INR)	-12.73		-10.75	-13.21		-9.18
EPS - Diluted (INR)	-12.73		-10.75	-13.21		-9.18

Result Summary (Consolidated) – 12M, FY'25 vs 12M, FY'24

Particulars (INR Mn)	12M, FY'25			12M, FY'24		
	Reported	Ind-AS 116 Impact	Ind-AS 116 Adjusted	Reported	Ind-AS 116 Impact	Ind-AS 116 Adjusted
Total Income	59,536	790	58,746	62,637	600	62,037
Expenses	42,383	-11,660	54,043	42,970	-10,980	53,950
EBITDA	17,153	12,450	4,703	19,667	11,580	8,087
EBITDA Margin	28.8%		8.0%	31.4%		13.0%
Depreciation & Amortization	12,798	7,962	4,836	12,193	7,486	4,707
EBIT	4,355	4,488	-133	7,474	4,094	3,380
Finance Costs	8,095	6,212	1,883	7,913	6,059	1,854
PBT	-3,743	-1,724	-2,019	-439	-1,965	1,526
Corporate Tax	-934	-434	-500	-112	-495	383
PAT	-2,809	-1,290	-1,519	-327	-1,470	1,143
PAT Margin	-4.7%		-2.6%	-0.5%		1.8%
EPS - Basic (INR)	-28.48		-15.40	-3.26		11.41
EPS - Diluted (INR)	-28.48		-15.40	-3.26		11.34

Key Operating Numbers

Particulars	Units	Q4, FY'25	Q4, FY'24		12M, FY'25	12M, FY'24	
<u>Operating Numbers</u>		<i>Reported (A)</i>	<i>Reported (B)</i>	<i>YoY Change (%) (A / B-1)</i>	<i>Reported (A)</i>	<i>Reported (B)</i>	<i>YoY Change (%) (A / B-1)</i>
Cinema Count (at the end of period) ⁽¹⁾		349	359	-2.8%	349	359	-2.8%
Screen Count (at the end of period) ⁽¹⁾		1,723	1,718	0.3%	1,723	1,718	0.3%
Weighted Average Screens ⁽²⁾		1,688	1,674	0.8%	1,701	1,668	1.9%
Admits	Mn	30.5	32.6	-6.3%	136.9	151.4	-9.5%
Occupancy	%	20.5%	22.6%	-208 bps	23.0%	25.6%	-261 bps
Avg. Ticket Price (ATP)	INR	258	233	10.5%	259	259	0.0%
F&B Spend per Head (SPH)	INR	125	129	-3.5%	134	132	1.5%

(1) Includes 42 management screens across 12 cinemas which are managed under a 'Management fee' model. The above table excludes Operating KPIs of management properties

(2) Weighted average screens has been calculated basis the actual no. of days of operations of each cinema during the period, excluding 42 management screens across 12 cinemas

Revenue Analysis

Particulars (INR Mn)	Q4, FY'25			Q4, FY'24			12M, FY'25			12M, FY'24		
Weighted Average Screens ⁽¹⁾	1,688			1,674			1,701			1,668		
<u>Financials</u>	<i>Reported</i>			<i>Reported</i>			<i>Reported</i>			<i>Reported</i>		
	(A)			(B)			(A)			(B)		
				YoY Change (%)						YoY Change (%)		
				(A / B-1)						(A / B-1)		
Sale of Movie Tickets	6,447			6,353			29,549			32,799		
Sale of Food & Beverages	3,811			4,132			18,270			19,584		
Advertisement Income	962			1,045			4,475			4,519		
Convenience Fees	442			437			2,111			2,181		
Other Operating Income	836			597			3,394			1,988		
Other Income	355			340			947			966		
Total Income	12,853			12,904			58,746			62,037		
				-0.4%						-5.3%		

Consolidated Financials

- (1) Weighted average screens has been calculated basis the actual no. of days of operations of each cinema during the period, excluding 42 management screens across 12 cinemas
- (2) Increase in Other operating income is due to increase on account of 'Income from Film Distribution from INR 397 mn in Q4 FY'24 to INR 548 mn in Q4 FY'25 for distributing 'SkyForce'
- (3) Increase in Other operating income is due to increase on account of 'Income from Film Distribution from INR 1,199 mn in FY'24 to INR 2,364 mn in FY'25 for distributing 'Singham Again', 'Stree 2', 'SkyForce' etc

Fixed Expense Analysis – Comparable Cinemas

Particulars (INR Mn)	Q4, FY'25		Q4, FY'24		12M, FY'25		12M, FY'24	
Comparable Screens ⁽¹⁾	1,533		1,533	0%	1,433		1,433	0%
Fixed Cost								
Rent	2,825		2,765	2.2%	10,697		10,634	0.6%
CAM	821		779	5.4%	3,090		2,912	6.1%
Rent + CAM	3,646		3,544	2.9%	13,786		13,547	1.8%
Personnel	1,509		1,525	-1.0%	5,786		5,778	0.1%
Electricity & Water / Utilities	762		707	7.8%	3,416		3,391	0.7%
Other Expenses	1,722		1,833	-6.1%	6,284		6,381	-1.5%
Other Fixed Costs	3,993		4,065	-1.8%	15,485		15,551	-0.4%
Total Fixed Expenses	7,639		7,609	0.4%	29,271		29,097	0.6%

Disciplined Control on Fixed Cost

(1) Comparable screens are screens which were fully operational in both the periods. Excludes Lanka

Expense Analysis – Consolidated

Particulars (INR Mn)	Q4, FY'25			Q4, FY'24			12M, FY'25			12M, FY'24		
Weighted Average Screens ⁽¹⁾	1,688			1,674			1,701			1,668		
Variable Cost	Reported (A)	Reported (B)	YoY Change (%) (A/B-1)	Reported (A)	Reported (B)	YoY Change (%) (A/B-1)	Reported (A)	Reported (B)	YoY Change (%) (A/B-1)	Reported (A)	Reported (B)	YoY Change (%) (A/B-1)
FHC (%)	42.6%	44.4%	-188 bps	42.6%	44.4%	-188 bps	44.6%	46.0%	-137 bps	44.6%	46.0%	-137 bps
COGS (%)	25.1%	27.4%	-237 bps	25.1%	27.4%	-237 bps	24.9%	25.2%	-27 bps	24.9%	25.2%	-27 bps
Fixed Cost												
Rent	3,076	2,993	2.8%	3,076	2,993	2.8%	12,378	11,928	3.8%	12,378	11,928	3.8%
CAM	903	832	8.5%	903	832	8.5%	3,632	3,296	10.2%	3,632	3,296	10.2%
Personnel	1,704	1,706	-0.1%	1,704	1,706	-0.1%	6,860	6,573	4.4%	6,860	6,573	4.4%
Electricity & Water / Utilities	836	758	10.3%	836	758	10.3%	3,949	3,853	2.5%	3,949	3,853	2.5%
Other Expenses ex Movie Dist., Print	1,978	2,017	-1.9%	1,978	2,017	-1.9%	7,489	7,310	2.4%	7,489	7,310	2.4%
Total Fixed Expenses ex Movie Dist.	8,497	8,306	2.3%	8,497	8,306	2.3%	34,308	32,960	4.1%	34,308	32,960	4.1%
Movie Dist., Print charges ⁽²⁾	584	646	-9.6%	584	646	-9.6%	3,281	1,883	74.2%	3,281	1,883	74.2%
Total Fixed Expenses incl. Movie Dist.	9,081	8,952	1.4%	9,081	8,952	1.4%	37,589	34,843	7.9%	37,589	34,843	7.9%

Consolidated Financials

(1) Weighted average screens has been calculated basis the actual no. of days of operations of each cinema during the period, excluding 42 management screens across 12 cinemas

(2) Expenses relating to Distribution of movies

A dramatic scene of a fighter jet launching from a runway at sunset. The jet is seen from below, ascending into a sky filled with large, orange and yellow clouds. A bright trail of fire and smoke follows the jet's path. In the foreground, two pilots in flight suits and helmets walk away from the camera on the runway. Two other fighter jets are parked on the tarmac on either side of the pilots. The overall atmosphere is heroic and powerful.

KEY STRATEGIC INITIATIVES

1

**From
Managing to
Manufacturing
Footfalls**

2

**Control
Costs**

3

**Transition
towards
'Capital Light
Growth
Model'**

4

**Reduce
Debt**

1 From Managing to Manufacturing Footfalls



RE-RELEASES

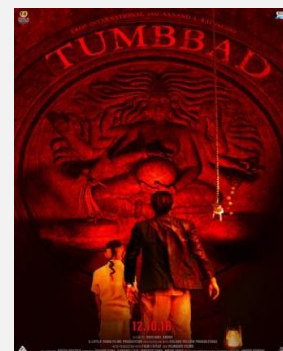


71 LAC +
ADMITS FY'25



1,240 MN
GBOC FY'25

TOP 3 RE-RELEASES OF FY'25



AFFORDABLE PRICING INITIATIVES

34 LACS
ADMITS ACROSS 5
CINEMA LOVERS /
NATIONAL CINEMA DAYS



2 Relentless Cost Control

		FY'20	5 Year CAGR	FY'25
On per screen basis (INR mn)		PVR + INOX Proforma		PVR + INOX
Fixed Costs (excluding Rent & CAM)	Weighted Average Screens ⁽¹⁾	1,371	4%	1,701
	Manpower Cost	5.5	- 2%	5.0
	Total Headcount	24,285	- 13% reduction over 5 years	21,035
	Total Headcount per screen	17.7	- 30% reduction over 5 years	12.4
	Utilities (Electricity & Water)	2.3	0%	2.3
	Other Overheads	3.8	- 2%	3.4
	Fixed Cost⁽³⁾ / Screen	11.7	-1.6%	10.8
Occupancy Cost	Rent	6.2	3% ⁽²⁾	7.3
	CAM	1.6	7% ⁽²⁾	2.1
Total Fixed Cost⁽³⁾ / Screen		19.4	0.8%	20.2

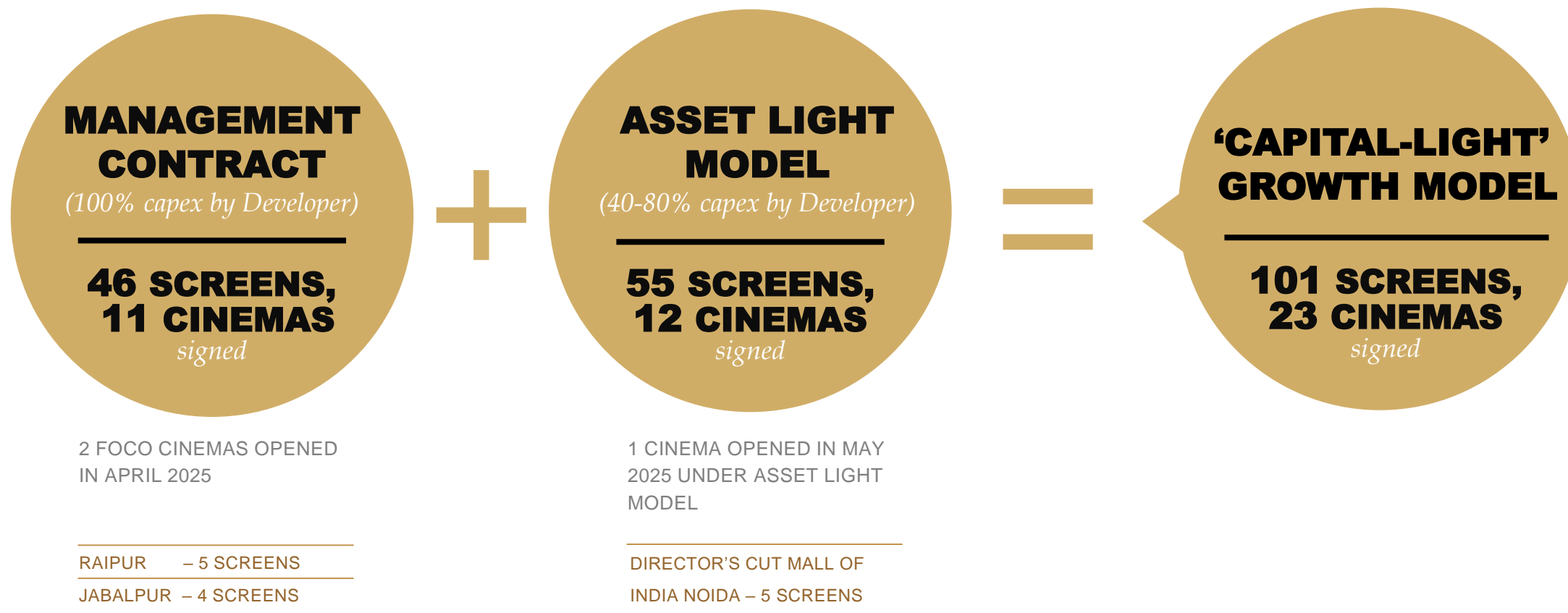
(1) Weighted average screens has been calculated basis the actual no. of days of operations of each cinema in an year.

(2) In line with contractual Rent & CAM escalation terms

(3) excluding Movie Distribution and Print charges

Significant cost reduction measures resulted in near zero growth in fixed cost per screen over 5 years, despite of 29% growth in CPI Index

3 Transition towards 'Capital Light' Growth Model

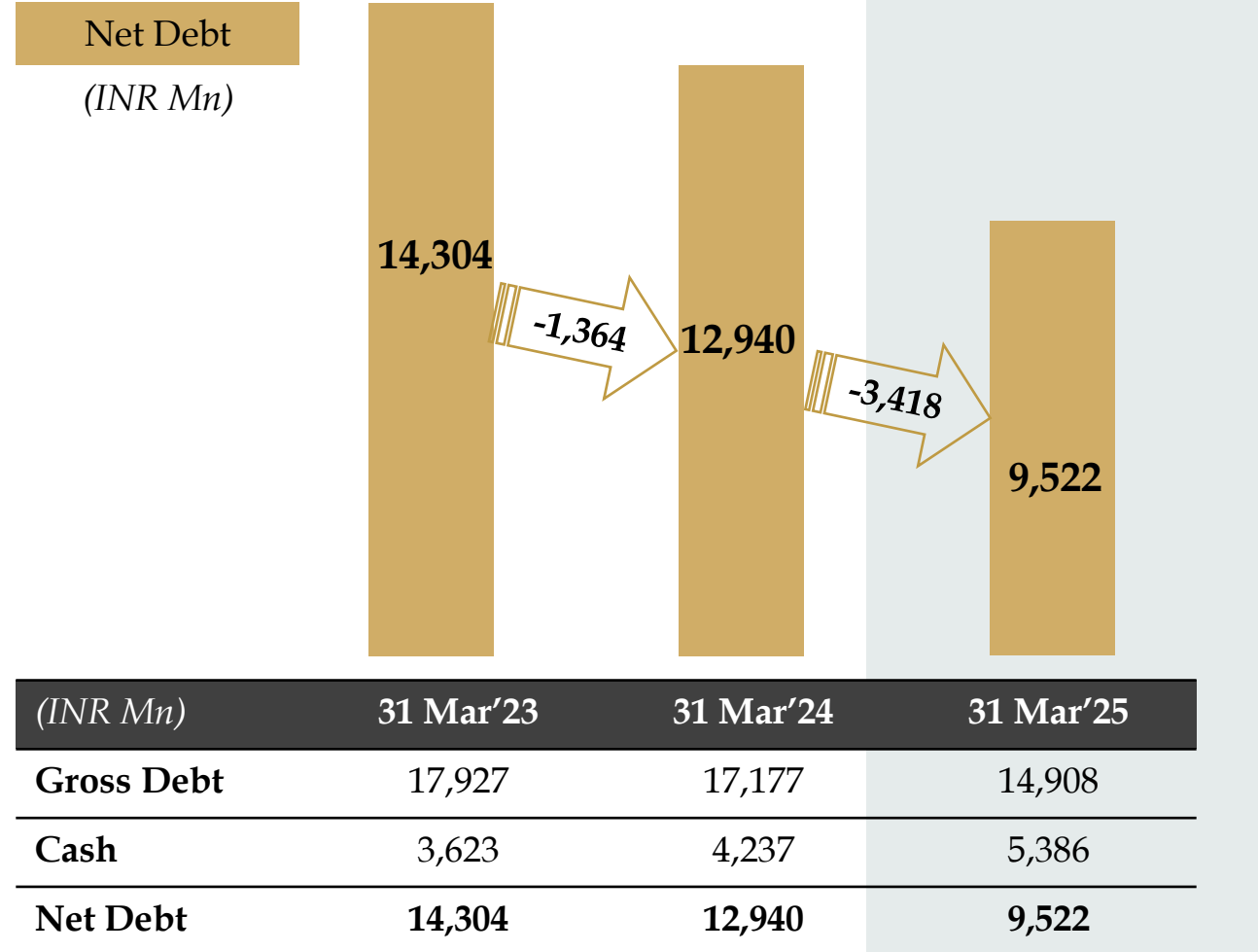


Majority of New Screen additions will be under the 'Capital Light' growth model

4 Strengthening the Balance Sheet & Consistent Debt Reduction

	Consolidated	
Particulars (INR Mn)	March 31, 2025	March 31, 2024
Total Shareholder funds	70,534	73,232
Equity Share Capital	982	981
Other Equity	69,533	72,254
Non-Controlling Interest	19	-3
Total Debt	14,908	17,177
Long Term Borrowings	9,198	10,474
Short Term Borrowings	5,710	6,703
Lease Liability	62,838	65,858
Other Non Current Liabilities	1,576	930
Total Sources of Funds	1,49,856	1,57,197
Net Fixed Assets Incl. CWIP	32,665	34,897
Goodwill	57,431	57,431
Right of Use assets (ROU)	49,923	54,917
Other Non Current Assets	11,698	11,010
Cash & Cash Equivalents ⁽¹⁾	5,386	4,237
Current Assets	5,521	5,712
Less: Current Liabilities	12,768	11,007
Net Current Assets	-7,247	-5,295
Total Assets	1,49,856	1,57,197

(1) Includes Investments, Other Bank balances and Bank deposits (under 'Other Financials Assets')



SCREENS OPENED

#	CINEMAS OPENED	OPENING DATE	SCREENS
1.	PVR FORUM MALL, KOCHI	10-APR-24	9
2.	INOX PHOENIX MARKET CITY, BENGALURU	11-APR-24	14
3.	PVR KOPA, KOREGAON PARK, PUNE	8-MAY-24	7
	PVR AMBIENCE GURGAON (EXPERIENCE ZONE) ⁽¹⁾	9-MAY-24	4
4.	INOX URBAN SQUARE UDAIPUR	30-MAY-24	6
5.	PVR MACHLIPATNAM, ANDHRA PRADESH	31-MAY-24	3
6.	PVR LIDO MUMBAI	31-MAY-24	3
7.	INOX PRISM, HYDERABAD	27-JUN-24	4
8.	PVR PALLADIUM, AHMEDABAD	1-AUG-24	9
9.	PVR PP MALL, MOHALI	6-SEP-24	7
10.	PVR ALVEAL, COIMBATORE	2-OCT-24	5
11.	PVR MALL OF DEHRADUN (PACIFIC)	13-DEC-24	6
NEW SCREENS OPENED IN FY'25			77

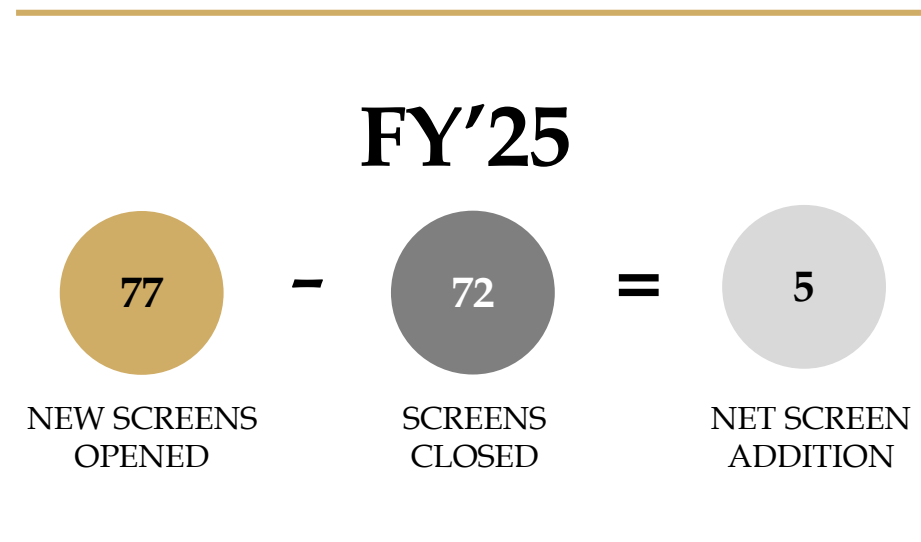
(1) 4 SCREENS WERE ADDED TO OUR EXISTING CINEMA IN AMBIENCE MALL, GURGAON

6 SCREENS AT ELAN MIRACLE, GURGAON WERE ADDED ON 25TH APRIL '25

5 SCREENS AT ZORA MALL, RAIPUR, WERE ADDED ON 25TH APRIL '25 - MANAGEMENT

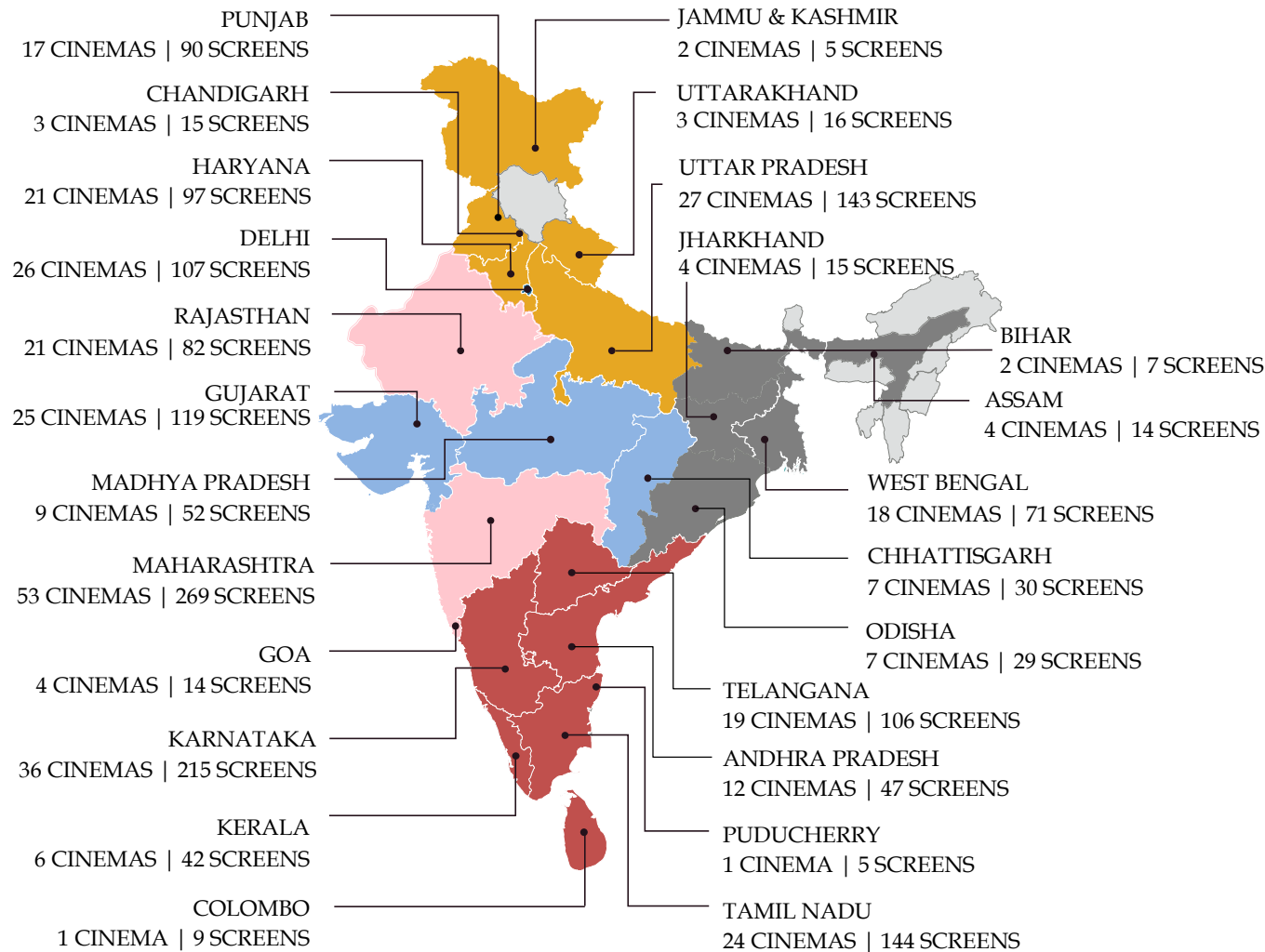
4 SCREENS AT KA MALL, JABALPUR WERE ADDED ON 30TH APRIL '25 - MANAGEMENT

5 DC SCREENS AT, MALL OF INDIA, NOIDA WERE ADDED ON 2ND MAY '25 - ASSET LIGHT

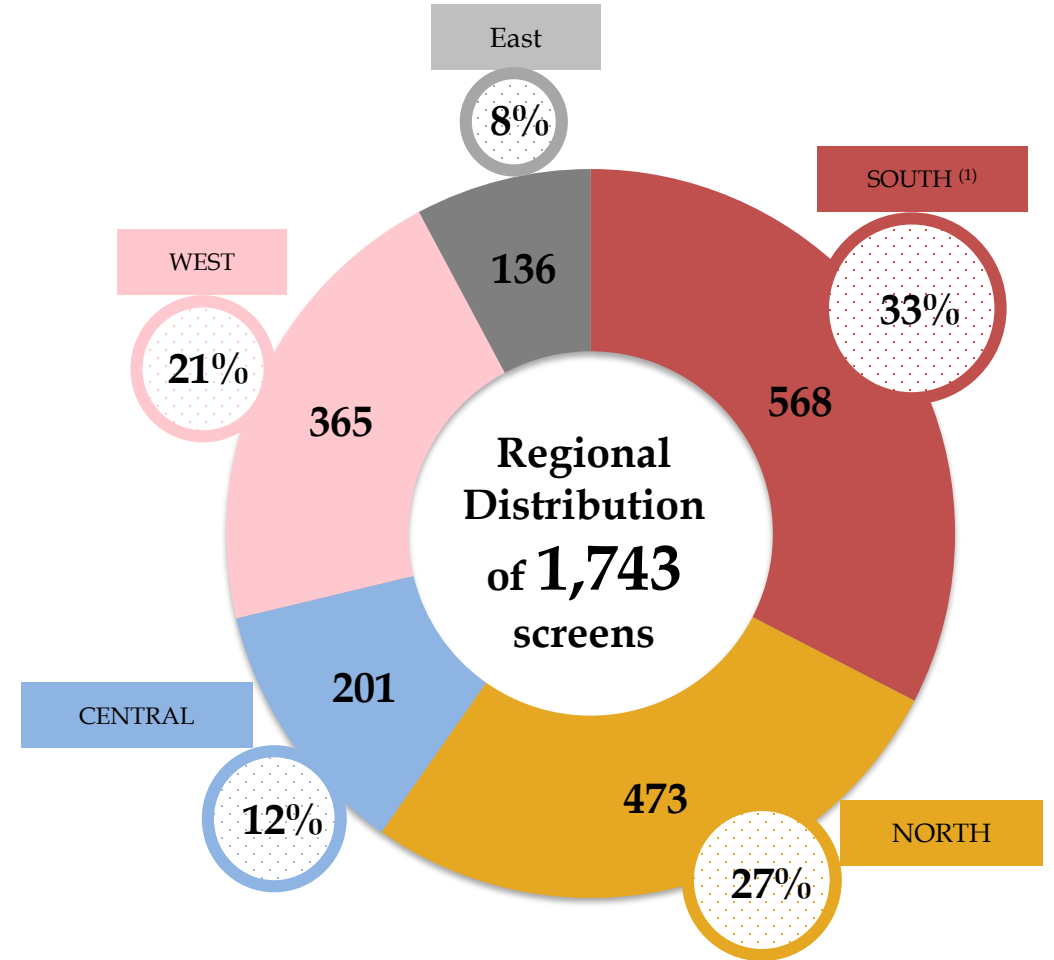


Expect to open 100-110 New Screens in FY'26

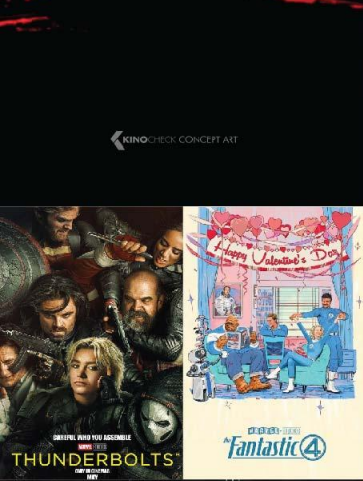
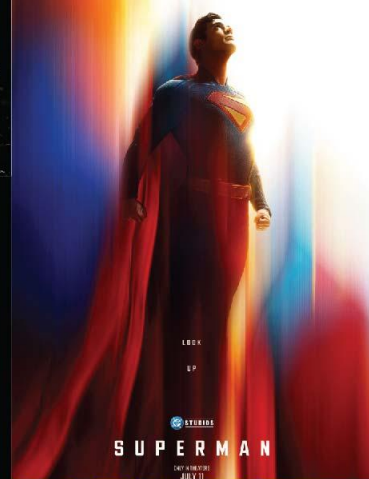
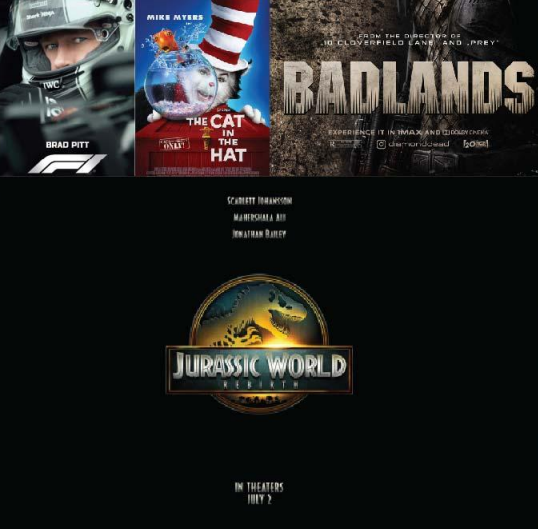
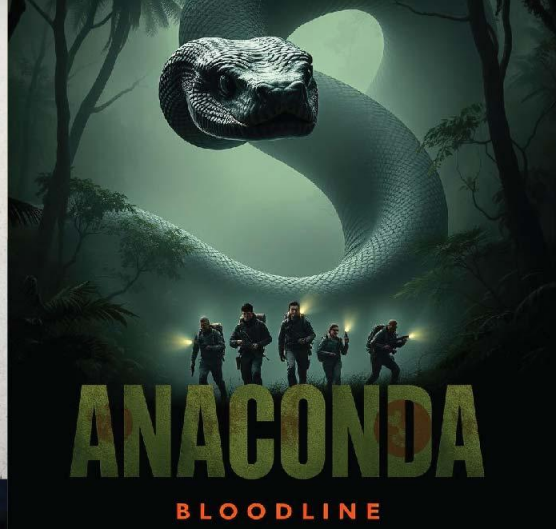
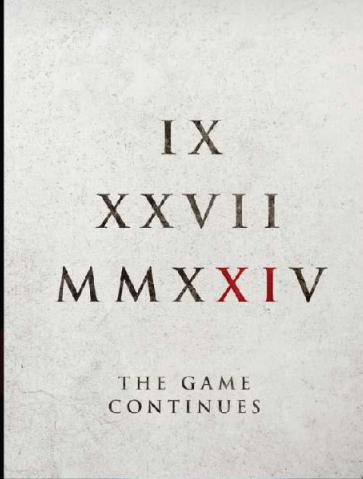
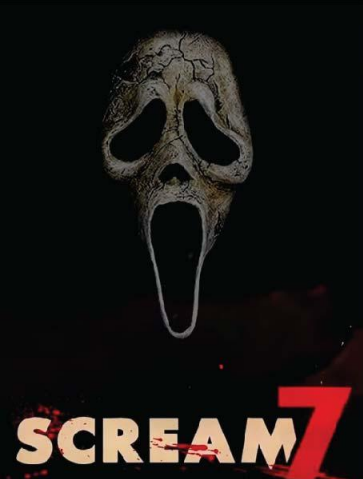
Diversified Screen Network of 1,743 Screens across 111 Cities



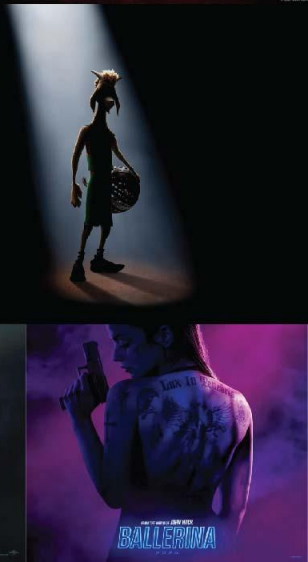
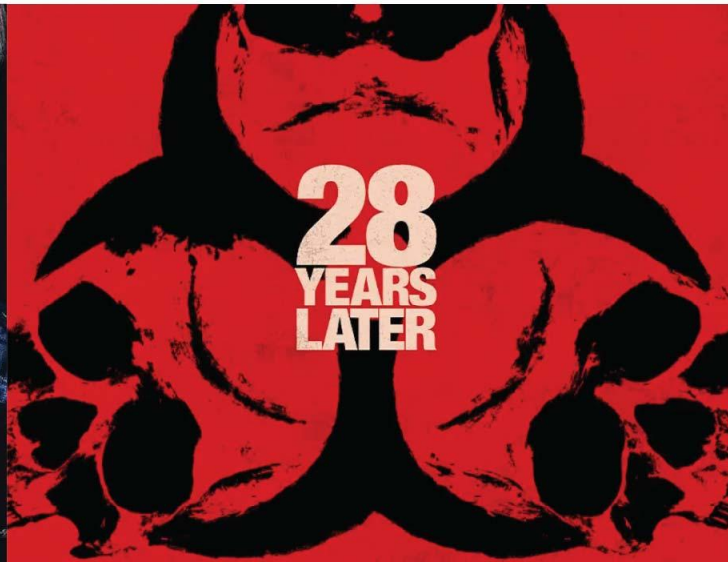
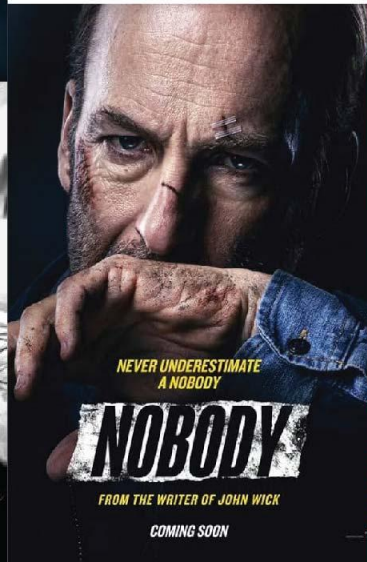
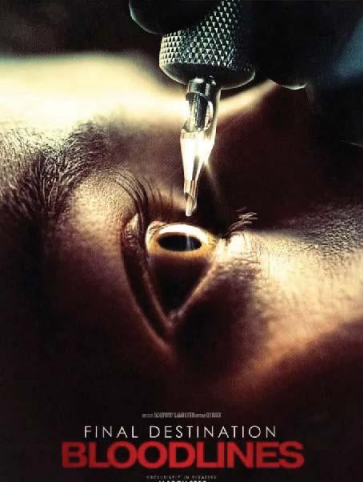
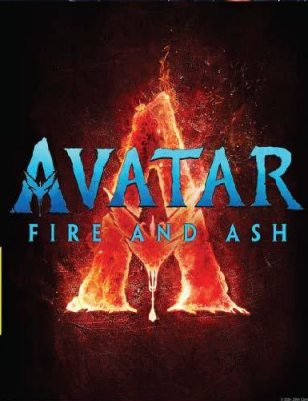
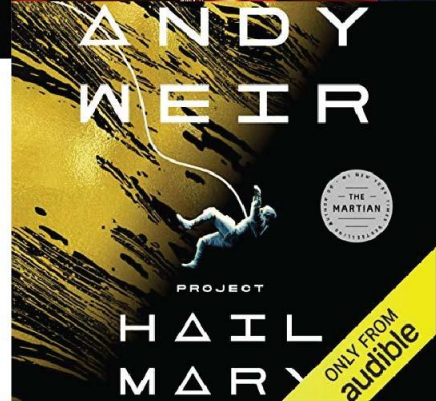
Note : Includes 14 Management Properties with 51 screens
Map not to scale, Screen Portfolio as on date



(1) South includes Sri Lanka



CONTENT LINEUP



Content Lineup



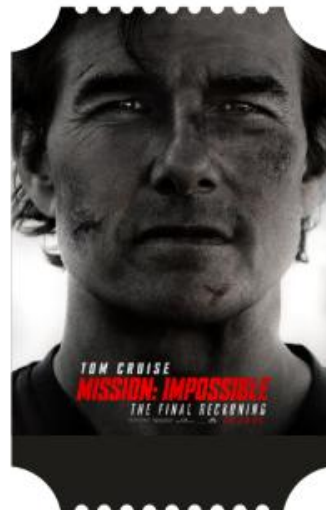
FINAL DESTINATION : BLOODLINES IMAX

CAST
TONY TODD,
BREC BASSINGER,
RICHARD HARMON

DIRECTOR
ZACH LIPOVSKY,
ADAM STEIN

ENGLISH

15TH MAY'2025



MISSION IMPOSSIBLE - THE FINAL RECKONING IMAX, 4DX, SCREEN-X

CAST
TOM CRUISE,
REBECCA FERGUSON

DIRECTOR
CHRISTOPHER
MCQUARRIE

ENGLISH

17TH MAY'2025



LILO & STICH

CAST
HANNAH
WADDINGHAM,
SYDNEY AGUDONG,
BILLY MAGNUSSEN

DIRECTOR
DEAN CAMP

ENGLISH

23RD MAY'2025



KARATE KID : LEGENDS

CAST
JACKIE CHAN,
RALPH MACCHIO

DIRECTOR
JONATHAN
ENTWISTLE

ENGLISH

30TH MAY'2025



KINGDOM

CAST
VIJAY DEVERAKONDA,
RUKMINI VASANTH,
BHAGYASHRI BORSE

DIRECTOR
GOWTAM TINNANURI

TELUGU

30TH MAY'2025



THUG LIFE

CAST
KAMAL HAASAN,
JAYAM RAVI,
TRISHA KRISHNAN

DIRECTOR
MANI RATNAM

TAMIL

05TH JUN'2025



BALLERINA

CAST
KEANU REEVES,
ANA DE ARAMAS,
IAN MC SHANE

DIRECTOR
LEN WISEMAN

ENGLISH

06TH JUN'2025



HOUSEFULL 5

CAST
AKSHAY KUMAR,
RITEISH DESHMUKH,
SANJAY DUTT

DIRECTOR
TARUN MANSUKHANI

HINDI

06TH JUN'2025

Content Lineup



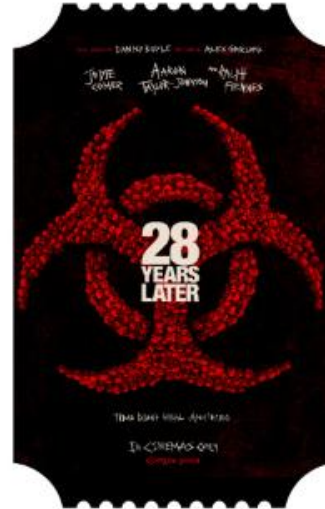
HOW TO TRAIN YOUR DRAGON (LIVE ACTION) IMAX, 4DX, SCREEN-X

CAST
NICO PARKER,
MASON THOMAS

DIRECTOR
DEAN DEBLOIS

ENGLISH

13TH JUN'2025



28 YEARS LATER

CAST
JODIE COMER,
AARON TAYLOR
JOHNSON,
RALPH FIENNES

DIRECTOR
DANNY BOYLE

ENGLISH

20TH JUN'2025



KUBERAA

CAST
DHANUSH,
NAGARJUNA,
RASHMIKA,
JIM SARBH

DIRECTOR
SEKHAR KAMMULA

**TAMIL, TELUGU,
HINDI,
MALAYALAM,
KANNADA**

20TH JUN'2025



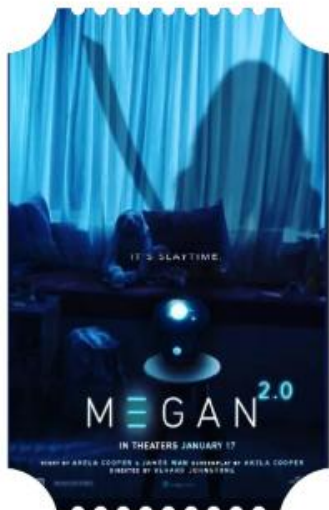
SITARE ZAMEEN PAR

CAST
AAMIR KHAN,
DARSHEEL SAFARY

DIRECTOR
R.S PRASANNA

HINDI

20TH JUN'2025



MEGAN 2.0

CAST
ALLISON WILLIAMS,
VIOLET MCGRAW,
AMIE DONALD

DIRECTOR
GERARD JOHNSTONE

ENGLISH

27TH JUN'2025



FORMULA ONE IMAX

CAST
BRAD PITT,
DAMSON IDRIS,
KERRY CODON,
TOBIAS MENZIES

DIRECTOR
JOSEPH KOSINSKI

ENGLISH

27TH JUN'2025



SARDAARJI 3

CAST
DILJIT DOSANJH,
NEERU BAJWA,
MANDY TAKHAR

DIRECTOR
AMAR HUNDAL

PUNJABI

27TH JUN'2025



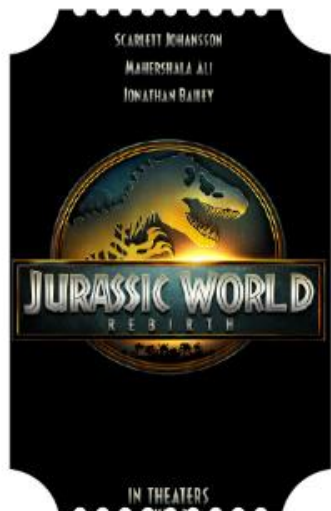
KANNAPPA

CAST
MANCHU VISHNU,
PRABHAS, MOHAN
BABU, MADHOO,
MOHANLAL

DIRECTOR
MUKESH KUMAR
SINGH

**TELUGU, HINDI ,
TAMIL, KANNADA**

27TH JUN'2025



JURASSIC WORLD REBIRTH

CAST
SCARLETT JOHANSSON,
MAHERSHALA ALI,
JONATHAN BAILEY,
RUPERT FRIEND

DIRECTOR
GARETH EDWARDS
ENGLISH

04TH JUL'2025



METRO IN DINO

CAST
ADITYA ROY KAPOOR,
SARA ALI KHAN, ALI
FAZAL, FATIMA SANA
SHAIKH, KONKONA
SEN SHARMA,
ANUPAM KHER

DIRECTOR
ANURAG BASU
HINDI

04TH JUL'2025



MAALIK

CAST
RAJKUMMAR RAO,
MEDHA SHANKR,
MANUSHI CHILLAR

DIRECTOR
PULKIT
HINDI

11TH JUL'2025



SUPERMAN IMAX

CAST
ISABELA MERCED,
NICHOLAS HOULT,
RACHEL
BROSNAHAN

DIRECTOR
JAMES GUNN
ENGLISH

11TH JUL'2025



SARBALA JI

CAST
GIPPY GREWAL,
AMMI VIRK,
SARGUN MEHTA,
NIMRAT KHAIRA

DIRECTOR
MANDEEP KUMAR
PUNJABI

18TH JUL'2025

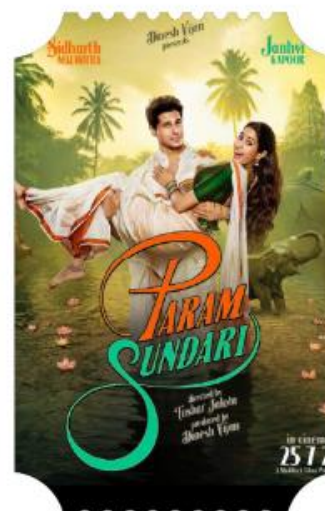


FANTASTIC FOUR, THE FIRST STEPS IMAX

CAST
VANESSA KIRBY,
PEDRO PASCAL

DIRECTOR
MATT SHAKMAN
ENGLISH

25TH JUL'2025



PARAM SUNDARI

CAST
SIDDHARTH
MALHOTRA,
JANVI KAPOOR

DIRECTOR
TUSHAR JALOTA
HINDI

25TH JUL'2025



SON OF SARDAR 2

CAST
AJAY DEVGN

DIRECTOR
VIJAY KUMAR ARORA

HINDI

25TH JUL'2025

Content Lineup



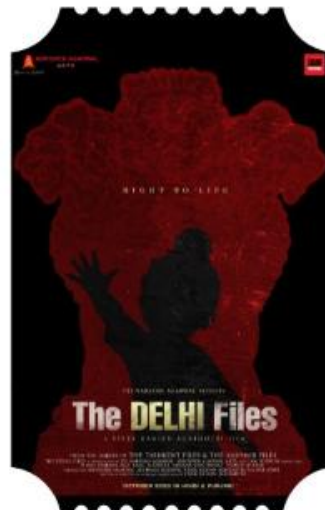
THE BAD GUYS 2

CAST
ZAZIE BEETZ,
SAM ROCKWELL,
AWKWAFINA

DIRECTOR
PIERRE PERIFEL

ENGLISH

01ST AUG'2025



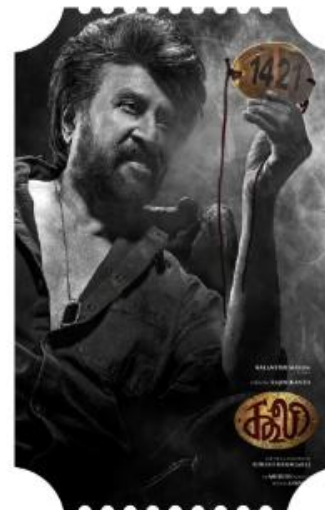
THE DELHI FILES

CAST
ANUPAM KHER,
MITHUN
CHAKRABORTY,
PUNEET ISSAR

DIRECTOR
VIVEK AGNIHOTRI

HINDI

14TH AUG'2025



COOLIE

CAST
RAJNIKANTH

DIRECTOR
LOKESH KANAGARAJ

**TAMIL, KANNADA,
TELUGU, HINDI**

14TH AUG'2025



WAR 2

CAST
HRITIK ROSHAN,
JR NTR

DIRECTOR
AYAN MUKERJI

HINDI

14TH AUG'2025



THE CONJURING: LAST RITES - IMAX

CAST
VERA FARMIGA ,
PATRICK WILSON

DIRECTOR
MICHAEL CHAVES

ENGLISH

05TH SEP'2025



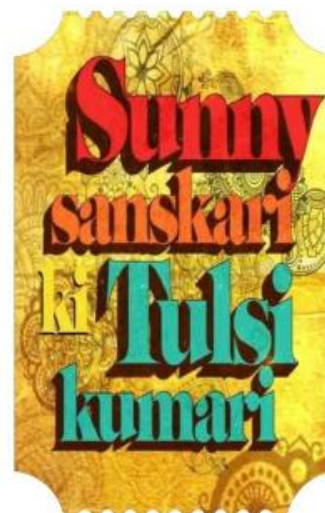
BAAGHI 4

CAST
TIGER SHROFF,
SARA ALI KHAN

DIRECTOR
AHMED KHAN

HINDI

05TH SEP'2025



SUNNY SANSKARI KI TULSI KUMARI

CAST
VARUN DHAVAN,
JANHVI KAPOOR

DIRECTOR
SHASHANK KHAITAN

HINDI

12TH SEP'2025



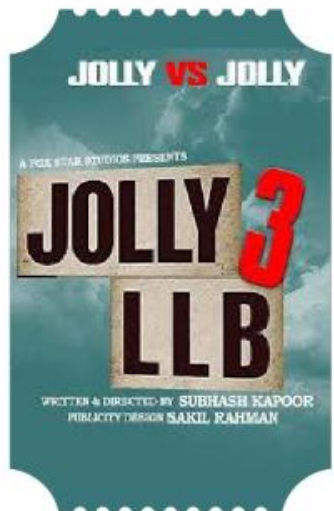
NIKAA ZAILDAR 4

CAST
AMMY VIRK,
SONAM BAJWA

DIRECTOR
SIMERJIT SINGH

PUNJABI

12TH SEP'2025



JOLLY LLB 3

CAST
AKSHAY KUMAR,
ARSHAD WARSİ,
HUMA QURESHI

DIRECTOR
SUBHASH KAPOOR

HINDI

19TH SEP'2025



SAW XI

CAST
TOBIN BELL,
COSTAS MANDYLOR

DIRECTOR
KEVIN GREUTERT

ENGLISH

26TH SEP'2025



IDLI KADAI

CAST
DHANUSH,
NITHYA MENON

DIRECTOR
DHANUSH

TAMIL

01ST OCT'2025



KANTARA: A LEGEND CHAPTER 1

CAST
RISHAB SHETTY

DIRECTOR
RISHAB SHETTY

KANNADA, TAMIL,
TELUGU, HINDI

02ND OCT'2025



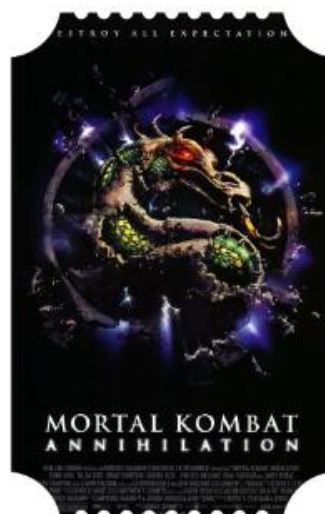
TRON : ARES - IMAX

CAST
JODIE TURNER
SMITH,
JEFF BRIDGES,
EVAN PETERS

DIRECTOR
JOACHIM RØNNING

ENGLISH

10TH OCT'2025



MORTAL KOMBAT 2 - IMAX

CAST
KARL URBAN,
HIROYUKI SANADA,
TADANOBU ASANO

DIRECTOR
SIMON MCQUOID

ENGLISH

24TH OCT'2025



THAMA

CAST
AAYUSHMAN
KHURANA,
RASHMIKA
MANDANNA,
NAWAZUDDIN
SIDDIQUI

DIRECTOR
ADITYA SARPOTDAR

HINDI

24TH OCT'2025



KARTIK AARYAN & SREE LEELA's NEXT

CAST
KARTIK AARYAN,
SREE LEELA

DIRECTOR
ANURAG BASU

HINDI

24TH OCT'2025



THANK YOU