



INVESTOR UPDATE
FINANCIAL RESULTS
Q2 & H1, FY 2015-2016

Table of Contents

S. No.	Particulars	Slide No.
1	Key Numbers	1
2	Screen Portfolio	2
3	Results Snapshot	3-4
4	Revenue Analysis	5
5	Box Office	6-7
6	F&B Revenues	8
7	Sponsorship Revenues	9
8	Expenditure Analysis	10
9	Balance Sheet	11
10	ROCE Analysis - Exhibition Business	12
11	Property Opening	13
12	Content Pipeline	14-18

Key numbers – Q2, FY 15-16

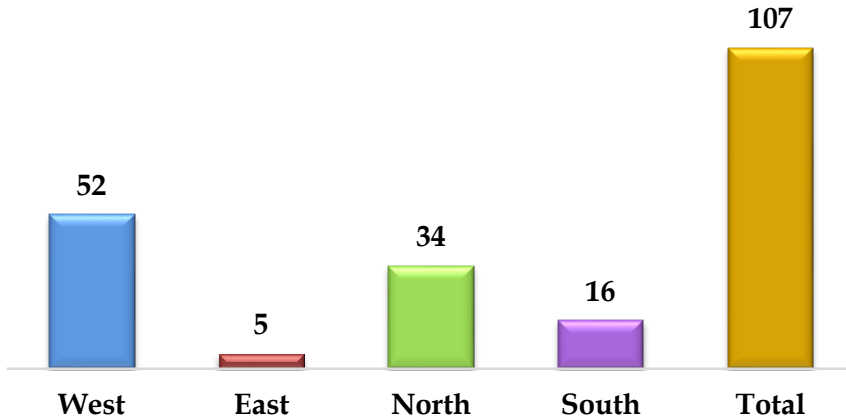
Admits Lacs	Revenue Lacs	EBITDA Lacs	EBITDA Margin	PAT Lacs
188 +20%	48,409 +21%	10,003 +73%	20.7% +6.2%	4,113 +405%
vs 157	vs 39,956	vs 5,798	vs 14.5%	vs 815

Key numbers – H1, FY 15-16

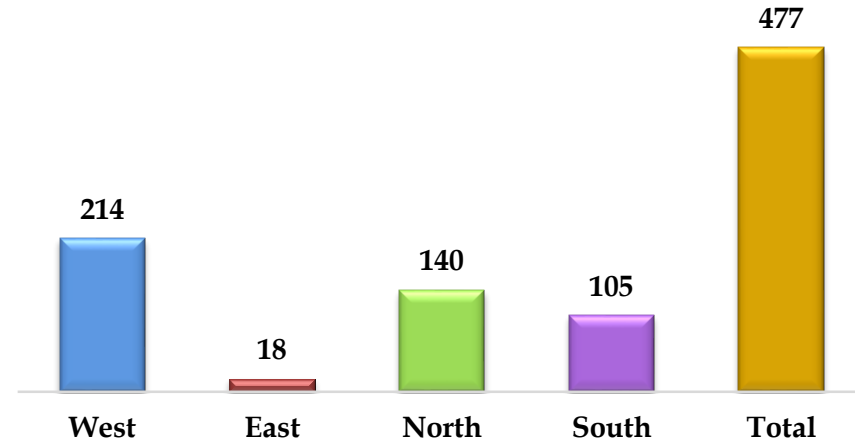
Admits Lacs	Revenue Lacs	EBITDA Lacs	EBITDA Margin	PAT Lacs
378 +22%	97,093 +27%	21,330 +87%	22.0% +7.1%	9,958 +538%
vs 309	vs 76,300	vs 11,388	vs 14.9%	vs 1,561

Screen Portfolio – As on date

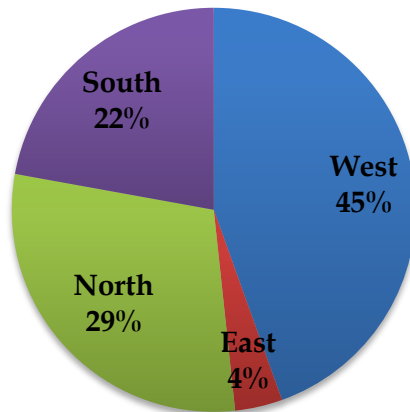
Properties



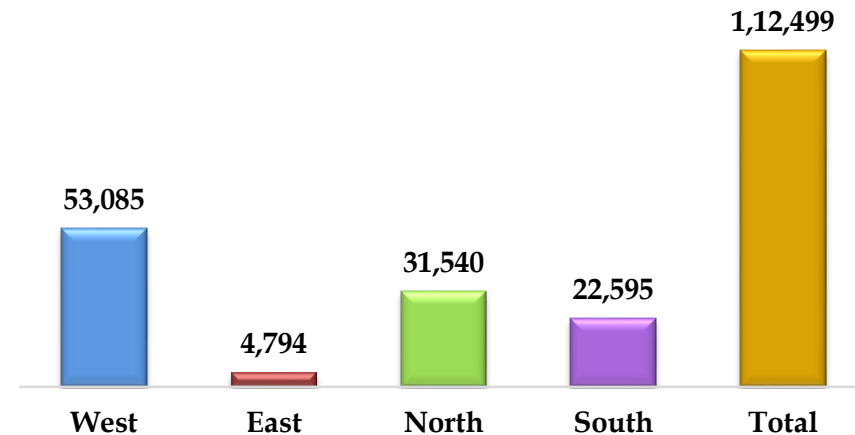
Screens



Screen Distribution



Seats



Consolidated - Results Snapshot

Particulars (Rs Lacs)	Q2			H1		
	FY 15-16	FY 14-15	Growth	FY 15-16	FY 14-15	Growth
Income	47,460	39,892	19%	96,062	76,118	26%
Expenses	38,406	34,158	12%	75,763	64,912	17%
Operating Profit	9,054	5,734	58%	20,299	11,206	81%
Operating Margin	19.1%	14.4%	4.7%	21.1%	14.7%	6.4%
Other Income	949	64	1383%	1,031	182	466%
EBITDA	10,003	5,798	73%	21,330	11,388	87%
EBITDA Margin	20.7%	14.5%	6.2%	22.0%	14.9%	7.1%
Depreciation	2,977	3,049	-2%	5,897	5,963	-1%
EBIT	7,026	2,749	156%	15,433	5,425	184%
Finance Cost	2,062	1,937	6%	4,241	3,861	10%
PBT before Exceptional item	4,964	812	511%	11,192	1,564	616%
Exceptional Item ¹	-	-	-	(326)	-	-
PBT after Exceptional item	4,964	812	511%	10,866	1,564	595%
Tax	851	(3)	28267%	908	3	30167%
PAT	4,113	815	405%	9,958	1,561	538%

[1] Exceptional item include loss on write off of cinema under construction during the period ended June 30, 2015.

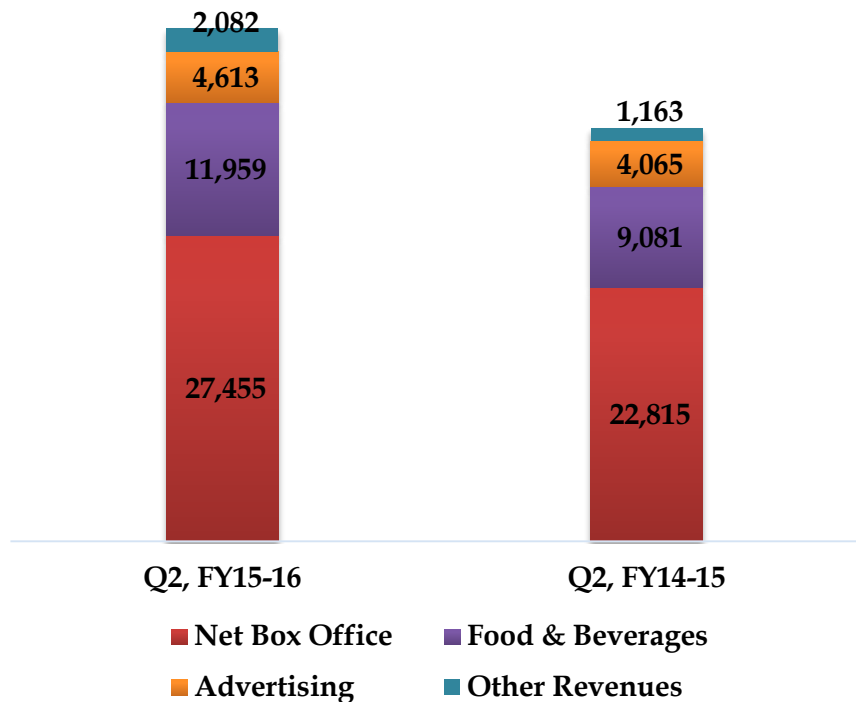
Standalone (Exhibition) - Results Snapshot

Particulars (Rs Lacs)	Q2			H1		
	FY 2015-16	FY 2014-15	Growth	FY 2015-16	FY 2014-15	Growth
Income	45,196	37,100	22%	91,413	71,371	28%
Expense	36,459	31,775	15%	72,072	60,961	18%
Operating Profit	8,737	5,325	64%	19,341	10,410	86%
Operating Margin	19.3%	14.4%	4.9%	21.2%	14.6%	6.6%
Other Income	913	23	3870%	978	76	1187%
EBITDA	9,650	5,348	80%	20,319	10,486	94%
EBITDA Margin	20.9%	14.4%	6.5%	22.0%	14.7%	7.3%
Depreciation	2,548	2,608	-2%	5,061	5,029	1%
EBIT	7,102	2,740	159%	15,258	5,457	180%
Finance Cost	2,043	1,882	9%	4,214	3,752	12%
PBT before Exceptional item	5,059	858	490%	11,044	1,705	548%
Exceptional Item	-	-	-	(318)	-	-
PBT after Exceptional item	5,059	858	490%	10,726	1,705	529%
Tax	1,213	-	-	1,213	-	-
PAT	3,846	858	348%	9,513	1,705	458%

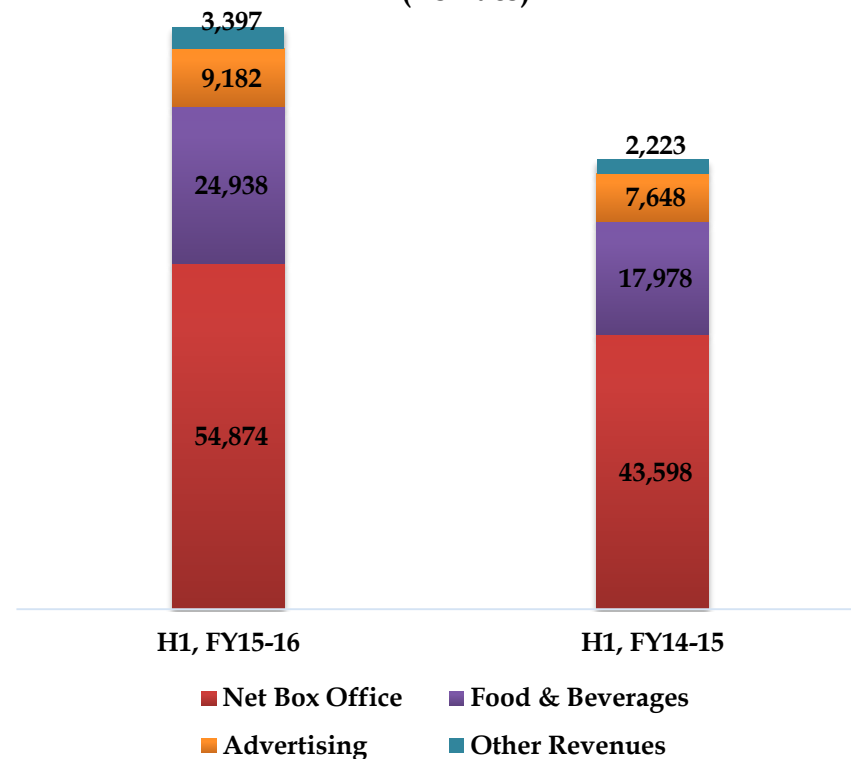
Location	106	101	5%	106	101	5%
Screens	474	445	7%	474	445	7%
Seats	1,11,763	1,05,668	6%	1,11,763	1,05,668	6%
Footfalls (Lacs)	188	157	20%	378	309	22%
Occupancy %	37%	32%	5%	38%	32%	6%
ATP (Rs)	187	181	3%	185	179	3%
SPH (Rs)	68	63	9%	71	63	13%
Sponsorship Income (Rs Lacs)	4,613	4,065	13%	9,182	7,648	20%

Revenues Analysis

Q2 (Rs Lacs)



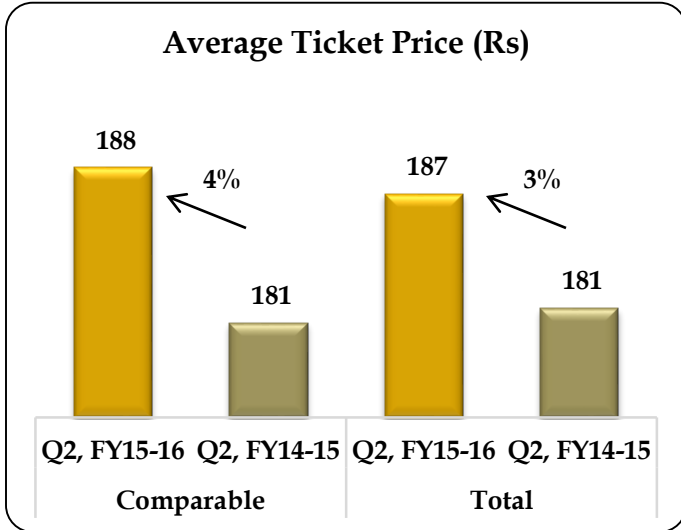
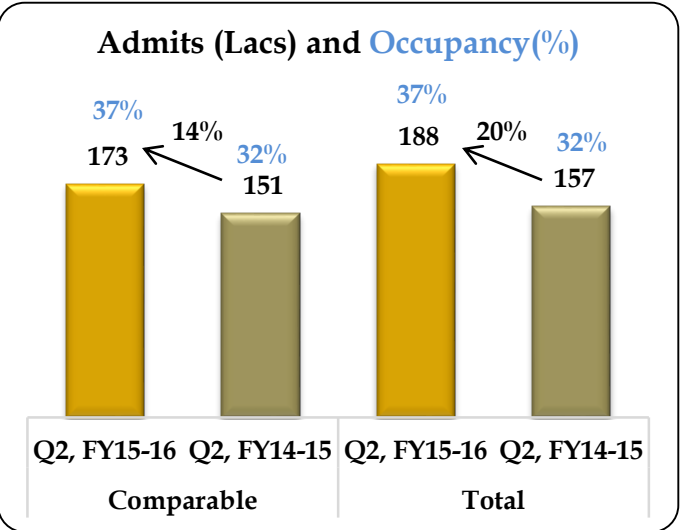
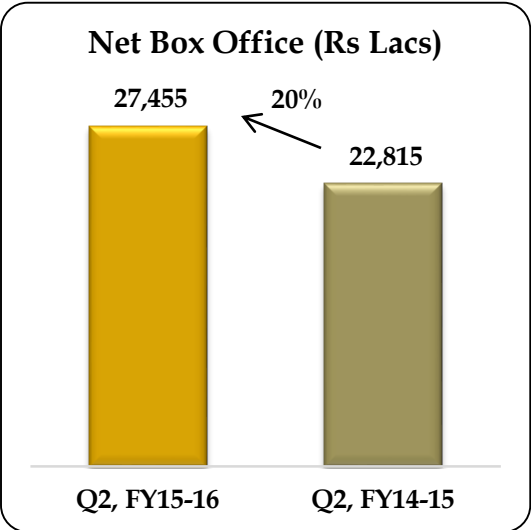
H1 (Rs Lacs)



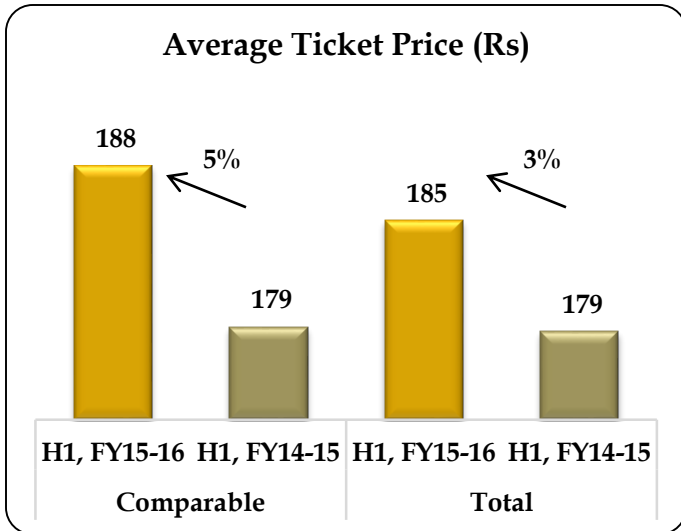
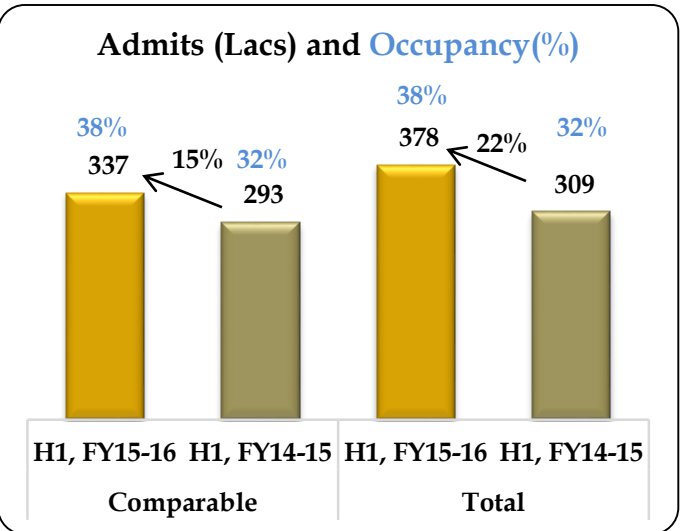
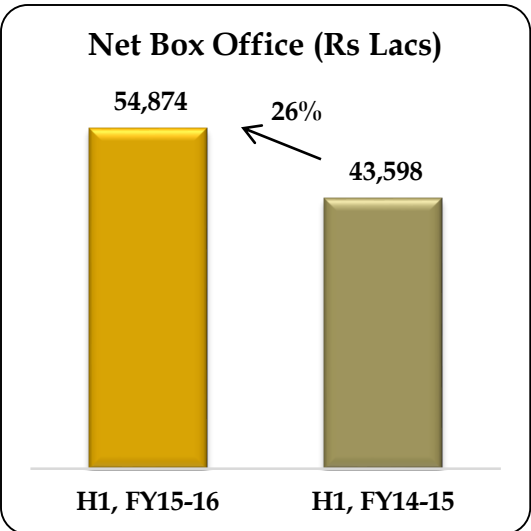
% Share	Q2, FY 15-16	Q2, FY 14-15
Net Box Office	59.5%	61.5%
Food & Beverages	25.9%	24.5%
Advertising	10.0%	10.9%
Other Revenues	4.5%	3.1%

% Share	H1, FY 15-16	H1, FY 14-15
Net Box Office	59.4%	61.0%
Food & Beverages	27.0%	25.2%
Advertising	9.9%	10.7%
Other Revenues	3.7%	3.1%

Box Office – Q2, FY 15-16

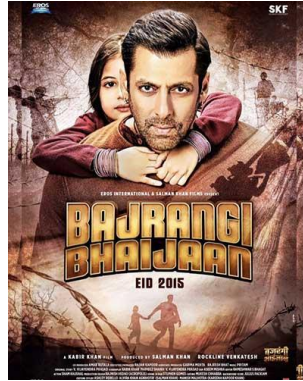


Box Office – H1, FY 15-16



*ATP includes 3D Glasses upcharge

Box office - Top 5 Movies – Q2, FY 15-16



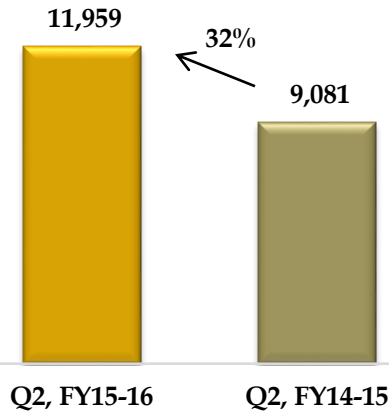
Q2, FY2015-16	Bajrangi Bhaijaan	Baahubali-The Beginning	Welcome Back	Drishyam	MI Rogue Nation
Gross Box Office (Rs Lacs)	7,202	4,854	2,216	1,874	1,799
Net Box Office (Rs Lacs)	5,271	3,608	1,592	1,340	1,307
Admits (Lacs)	34.8	27.9	11.5	10.3	8.5
ATP (Rs) ¹	207	174	193	183	212

Top 5 Movies contributed 51% of Net Box office for the quarter

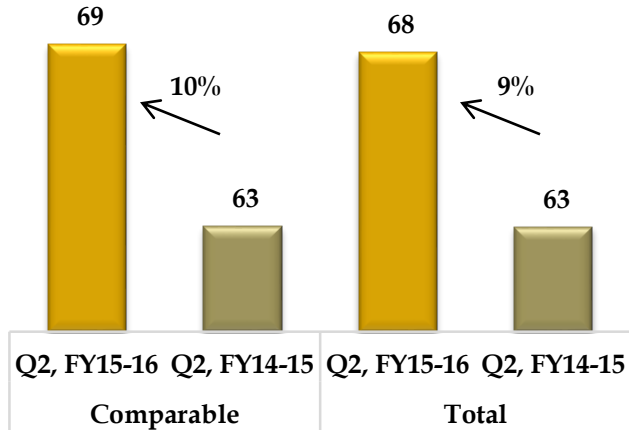
[1] ATP includes 3D Glasses upcharge

F&B – Q2, FY 15-16

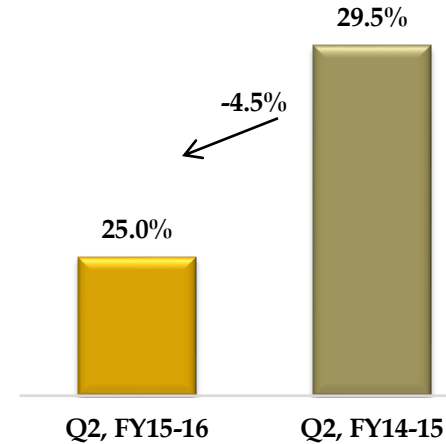
Net F&B (Rs Lacs)



Spend Per Head (Rs)

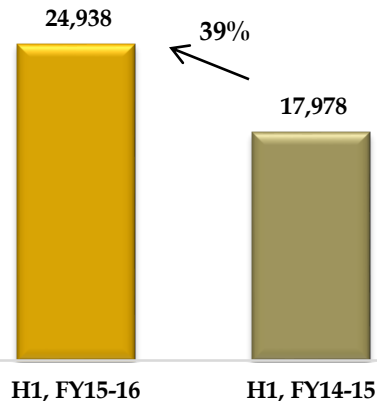


COGS

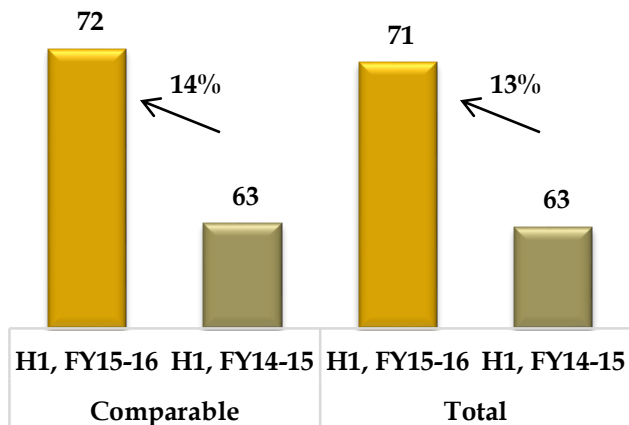


F&B – H1, FY 15-16

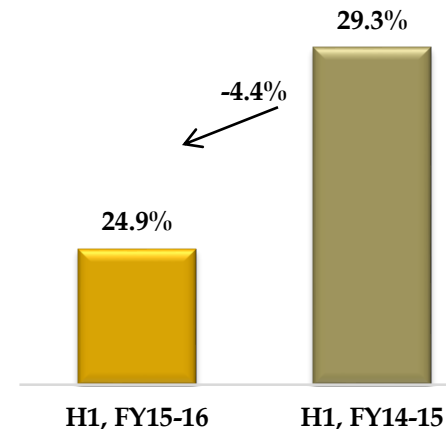
Net F&B (Rs Lacs)



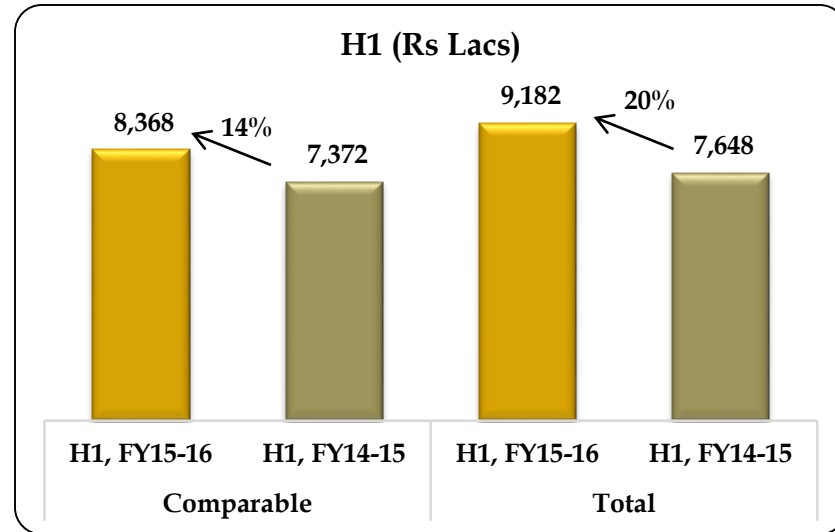
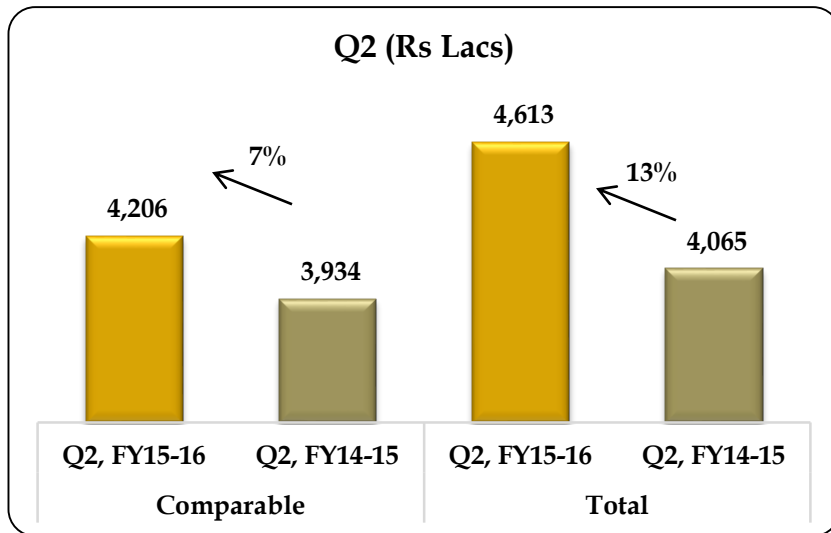
Spend Per Head (Rs)



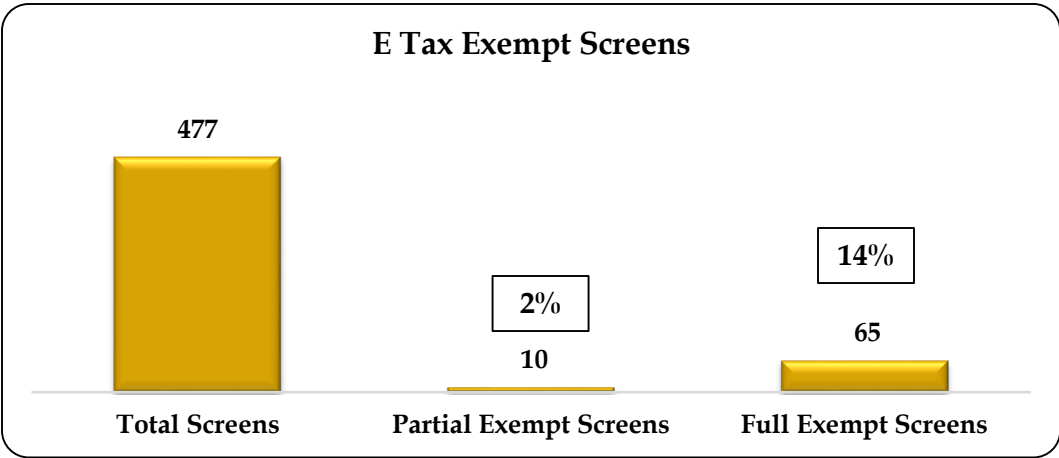
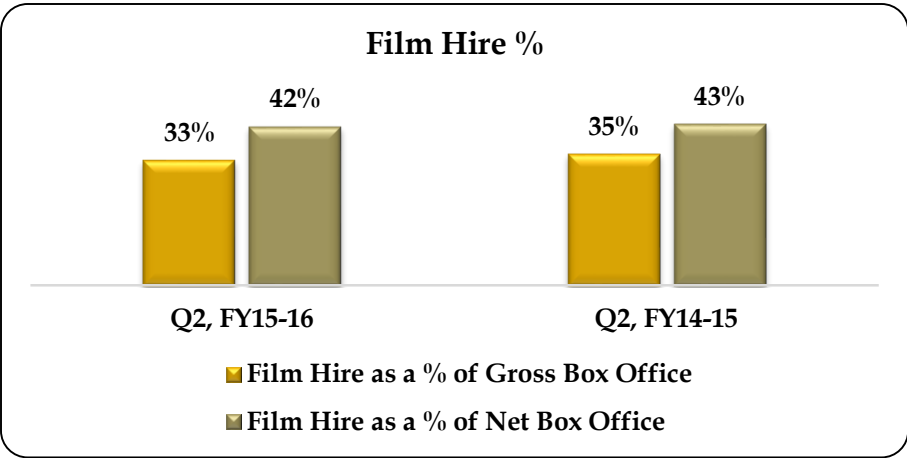
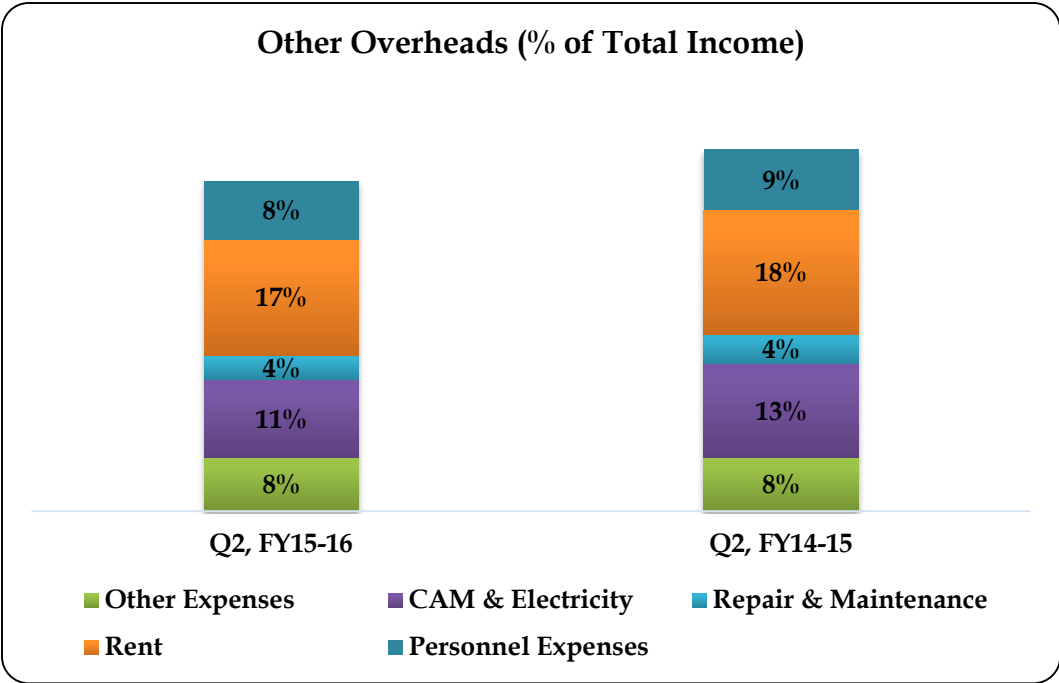
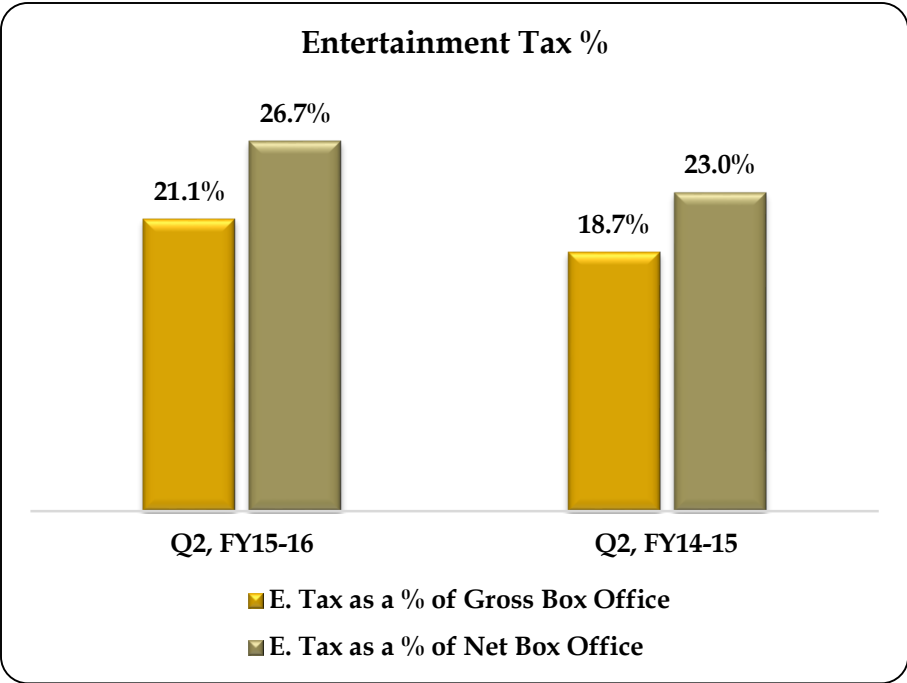
COGS



Sponsorship Revenues



Expenditure Analysis – Q2, FY 2015-16



Properties Openings – FY 2015-16

Particulars	Q1 FY2015-16	Q2 FY2015-16	Q3 FY2015-16 (Estimated)	Q4 FY2015-16 (Estimated)	Total FY2015-16 (Estimated)
Properties	1	2	3	4	10
Screens	3	10	18	31	62

**Expected Screens
as on 31st
March'16 - 526**

PVR Bokaro, Jharkhand: 17th April, 2015



PVR Trans Cube Plaza, Vadodara: 9th July, 2015



PVR DYP City, Kolhapur: 22nd October, 2015



ROCE Analysis – Exhibition Business

1. Screens Operational > 2 years - Stabilized Screens
2. Screens Operational < 2 years – Yet to Stabilize
3. Screens under construction

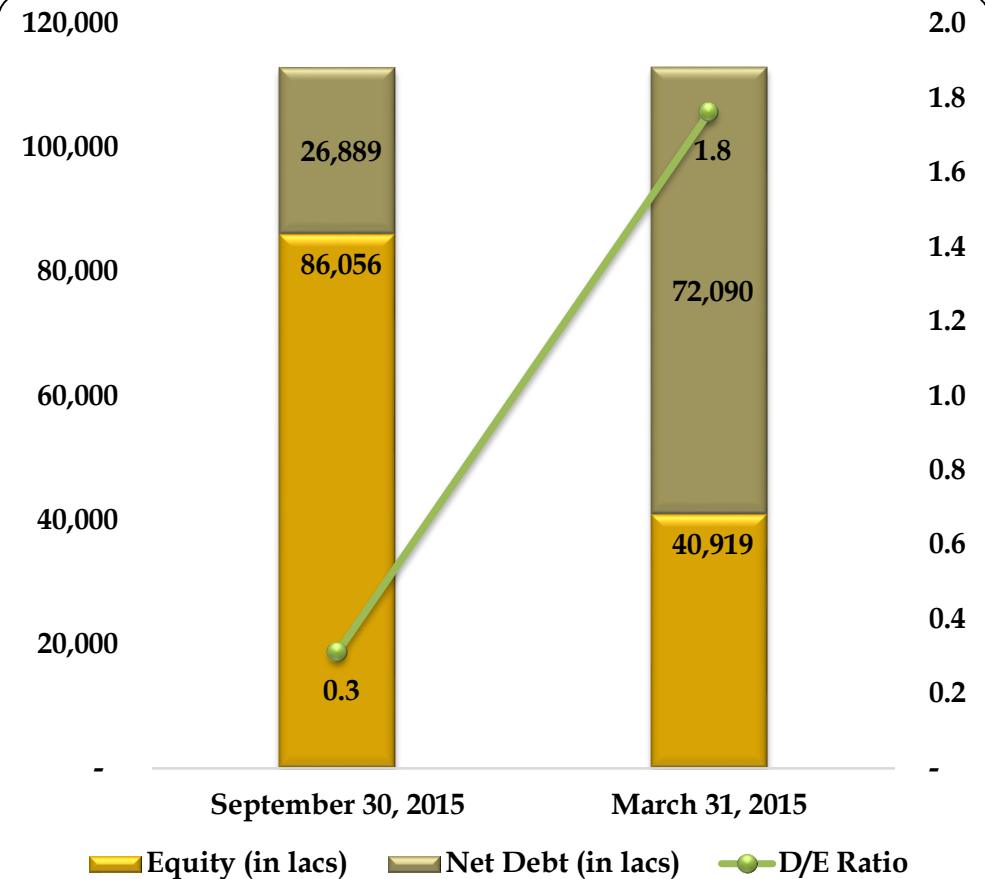
Particulars (Rs Lacs)	No of Screens	Net Capital Employed	Property Level			After Allocation of Corporate Overheads	
			EBIT	ROCE		EBIT	ROCE
Screen Operational > 2 years (A)	393	89,891	23,256	25.9%		17,910	19.9%
Screen Operational < 2 years (B)	81	17,564	2,194	12.5%		1,149	6.5%
Operational Screens Total (A+B+C)	474	107,455	25,450	23.7%		19,059	17.7%
Screens under construction (D)		8,435					
Grand Total (A+B+C+D)		115,890	25,450	22.0%		19,059	16.4%
Cash and Cash Equivalents (E)		37,122					
Company Total (A+B+C+D+E)		153,012	25,450	16.6%		19,059	12.5%

[1] EBIT based on trailing 12 months from Sept 30, 2015 has been considered.

[2] Net Capital Employed is as on 30th Sept, 2015 . Net Capital Employed = Shareholders' funds + Debt + Non current liabilities

Consolidated Balance Sheet

Particulars (In Lacs)	September 30, 2015	March 31, 2015
Total Shareholder funds	86,056	40,919
Share Capital	4,657	4,153
Reserves & Surplus	81,399	36,766
Minority Interest & Others	3,997	3,832
Total Debt ¹	66,455	74,701
Other Non Current Liabilities	2,421	1,309
Total Sources of Funds	1,58,928	1,20,761
Net Fixed Assets	93,849	94,075
Long-term loans and advances	33,028	30,748
Deferred tax assets	389	-
Other Non Current Assets	2,705	2,372
Cash & Cash Equivalents ²	39,566	2,611
Current Assets	17,281	13,077
Less: Current Liabilities	27,889	22,122
Net Current Assets	(10,608)	(9,046)
Total Assets	1,58,928	1,20,761



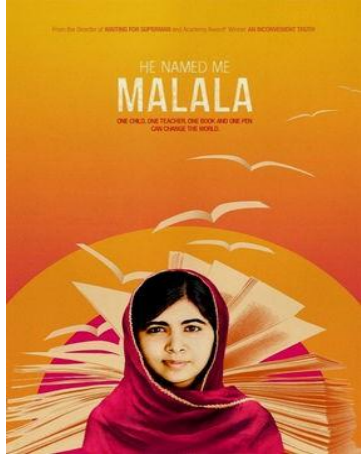
[1] Current Portion of Long Term Liabilities amounting to Rs 7,500 lacs has been added in Total Debt.

[2] Money lying in Escrow Account relating to DT acquisition has been reclassified from Capital Advance to Cash & Cash Equivalents

Content Pipeline

Content Pipeline

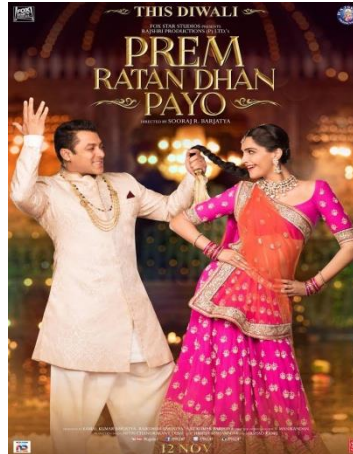
He Named Me Malala



Cast: Malala Yousafzai, Mobin Khan
Director: David Guggenheim

06 NOV' 15

Prem Ratan Dhan Payo



Cast: Salman Khan, Sonam Kapoor
Director: Sooraj Barjatya

12 NOV' 15

Vedalam (Tamil)



Cast: Ajith Kumar, Santhanam, Shruti Hassan
Director: J. Siva Kumar

12 NOV' 15

Thoongavanam (Tamil)



Cast: Kamal Hassan, Trisha, Prakash Raj
Director: Rajesh M. Selva

12 NOV' 15

Spectre (Imax)



Cast: Daniel Craig, Monica Bellucci
Director: Sam Mendes

20 NOV' 15

The Good Dinosaur



Cast: Neil Patrick Harris, Judy Greer, Bill Hader
Director: Peter Sohn

27 NOV' 15

Content Pipeline

Tamasha



Cast: Ranbir Kapoor
Deepika Padukone
Director: Imtiaz Ali

27 NOV' 15

The Hunger Game: Mocking jay 2



Cast: Jennifer Lawrence, Josh Hutcherson
Director: Francis Lawrence

27 NOV' 15

Victor Frankenstein



Cast: Daniel Radcliffe
Director: Paul McGuigan

27 NOV' 15

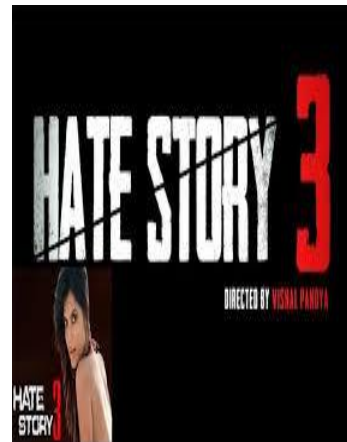
In The Heart Of The Sea



Cast: Chris Hemsworth, Cillian Murphy
Director: Ron Howard

04 DEC' 15

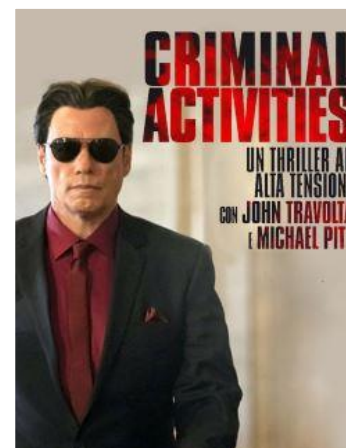
Hate Story 3



Cast: Sharman Joshi, Zarine Khan
Director: Vishal Pandya

04 DEC' 15

Criminal Activities



Cast: John Travolta, Dan Stevens
Director: Jackie Earle Haley

04 DEC' 15

Content Pipeline

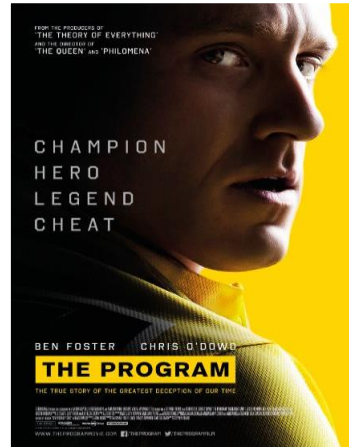
Snoopy and Charlie Brown: The Peanuts Movie



Cast: Bill Melendez
Director: Steve Martino

11 DEC' 15

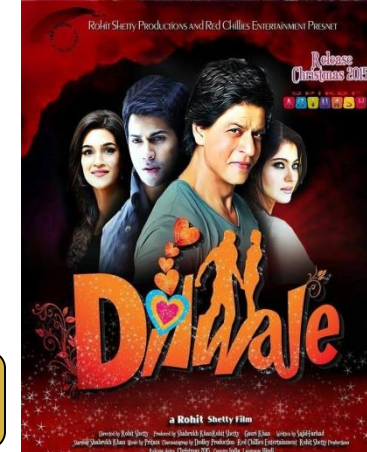
The Program



Cast: Teresa Palmer, Luke Bracey, Ray Winstone
Director: Ericson Core

11 DEC' 15

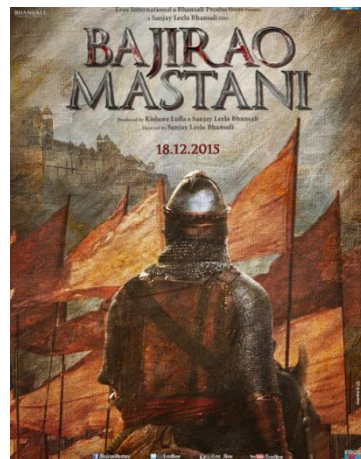
Dilwale



Cast: SRK, Kajol, Kriti Sanon, Varun Dhawan
Director: Rohit Shetty

18 DEC' 15

Bajirao Mastani



Cast: Deepika Padukone, Ranveer Singh
Director: Sanjay L Bhansali

18 DEC' 15

Star Wars



Cast: Oscar Isaac, Carrie Fisher, Harrison Ford
Director: J J Abrams

25 DEC' 15

Point Break



Cast: Teresa Palmer, Luke Bracey, Ray Winstone
Director: Ericson Core

01 JAN' 16

Content Pipeline

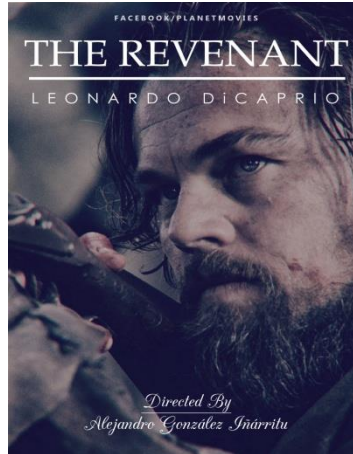
Alvin and The Chipmunks 4



Cast: Jason Lee
Justin Long
Matthew Gray Gubler
Director: Walt Becker

01 JAN' 16

The Revenant



Cast: Tom Hardy,
Leonardo DiCaprio,
Domhnall Gleeson
Director: Alejandro
González Iñárritu

08 JAN' 16

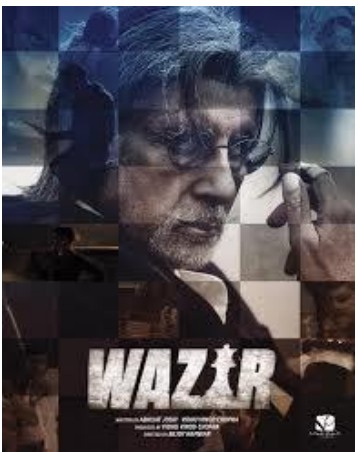
Our Brand Is Crisis



Cast: Sandra
Bullock, Billy Bob
Thorton
Director: David
Gordon Green

08 JAN' 16

Wazir



Cast: Amitabh
Bachchan, Farhan
Akhtar
Director: Bejoy
Nambiar

08 JAN' 16

The Danish Girl



Cast: Amber Heard,
Alicia Vikander
Director: Tom
Hooper

08 JAN' 16

The Hateful Eight



Cast: Channing
Tatum, Kurt Russel,
Samuel L Jackson
Director: Quentin
Tarantino

15 JAN' 16

Content Pipeline

Ghayal Once Again



Cast: Sunny Deol
Director: Sunny Deol

15 JAN' 16

The 33



Cast: Naomi Scott, Cote de Pablo
Director: Patricia Riggan

15 JAN' 16

13 Hours- The Secret Soldiers Of Benghazi



Cast: John Krasinski, Pabalo Schreiber
Director: Michael Bey

15 JAN' 16

Airlift



Cast: Akshay Kumar, Nimrat Kaur
Director: Raja Krishna Menon

22 JAN' 15

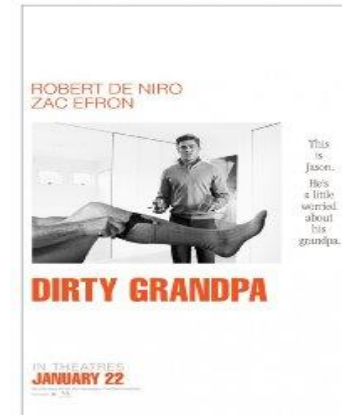
Joy



Cast: David O Russell
Director: Jennifer Lawrence, Bradley Cooper

22 JAN' 15

Dirty Grandpa



Cast: Zac Efron, Julianne Hough
Director: Dan mazer

22 JAN' 15

Thank You