



# Shri Balaji Valve Components Ltd

(Formerly known as Shri Balaji Valve Components Pvt Ltd)

Manufacturing of Precision Machined & Valve Components.

CIN: L29220PN2011PLC141370

GST No: 27AAQCS607681Z2

Date: 05/12/2025

To,  
The General Manager  
DCS-CRD  
(Corporate Relationship Department)  
BSE Ltd.  
Rotunda Building  
P.J. Tower, Dalal Street, Fort  
Mumbai-400001

BSE SCRIP Code: SBVCL | 544074|

**SUBJECT: SUBMISSION OF INVESTOR PRESENTATION ON UNAUDITED FINANCIAL RESULTS FOR THE HALF YEAR ENDED SEPTEMBER 30, 2025. PURSUANT TO REGULATION 30 OF THE SEBI (LODR) REGULATIONS, 2015.**

Pursuant to Regulation 30 of the Securities and Exchange Board of India (Listing Obligations and Disclosure Requirements) Regulations, 2015 ("SEBI LODR Regulations"), we hereby submit the Investor Presentation on the Unaudited Financial Results of the Company for the half year ended **30<sup>th</sup> September 2025.**

The said presentation covers the performance highlights and financial results for the period and is intended for use in interactions with investors, analysts, and other stakeholders.

We further confirm that the aforesaid Investor Presentation is also being simultaneously uploaded on the Company's official website at [www.balajivalvecomponents.com](http://www.balajivalvecomponents.com) for the information of the public.

Kindly take the above information on your record and disseminate the same appropriately.

Thanking you.

**FOR SHRI BALAJI VALVE COMPONENTS LTD**

SHRINIVAS LAXMIKANT KOLE  
Whole Time Director & CFO  
DIN: - 10119216

Date: 05/12/2025

Place: Pune

Encl: Investor Presentation

**Registered office**

Plot No: PAP B 31, Chakan MIDC,  
Phase-2, Bhamboli, Tal. Khed  
Pune- 410501, Maharashtra, India.

✉ [info@balajivalvecomponents.com](mailto:info@balajivalvecomponents.com)

🌐 [www.balajivalvecomponents.com](http://www.balajivalvecomponents.com)

☎ **+91-9765565409**

# H1FY26

Earnings Presentation



**Shri Balaji Valve  
Components Limited**





# COMPANY OVERVIEW





# AN INSIGHT INTO US



## One-stop solution for all your Assembly Needs

At Shri Balaji Valve Component Ltd, we develop and manufacture customized valve components of highest quality to make even your most critical applications superior and entirely safe. Our company’s state-of-the-art facility is equipped to consistently meet and exceed the customers’ needs and expectations. This extraordinary ability has helped us grow in leaps and bounds.



30+ Years of Experience  
in Machining Streams



2011  
Incorporation



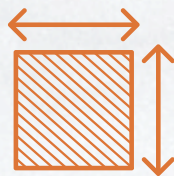
2 Plants



300+ Strength of  
Human Resources



3 Forging Hammer



70,000+  
Manufacturing  
Area (Sq. ft.)



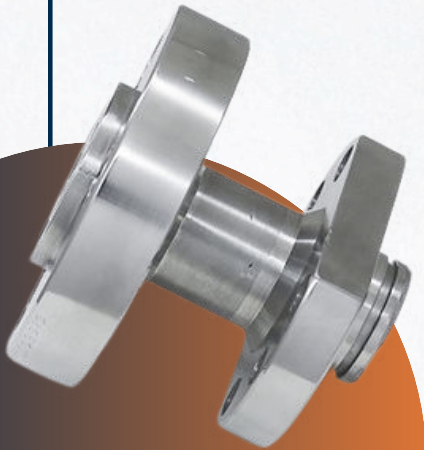
14 Countries, 6  
Continents Global  
Supply



Certificates-  
ISO 9001:2015  
PED 2014/68/EU  
AD 2000 MERKBLATT  
WO



130+ Machines





# ALL FACILITIES UNDER ONE ROOF

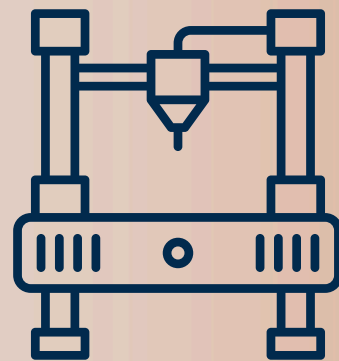


Shri Balaji Valve Components Ltd's state-of-the-art Pune facilities are equipped with over 130+ advanced machines and supported by cutting-edge inspection and testing systems. A team of 300+ highly qualified and progressive engineers spearhead the company's design, development, and engineering operations, ensuring precision, innovation, and excellence at every stage.

**Forging-** Our forging facility is PED certified and is equipped with Closed Hammer, Trimming Press, Oil Fired Furnace, and Closed Die Forging.



**Machining-** Our nonpareil machining capability is unparalleled with an array CNC Vertical Turret Lathe, VMC, and Special Purpose machines.



**Heat Treatment-** Our heat treatment facility is PED certified and is outfitted with Continuous furnace, Electric & PLC Control for annealing, Solution Annealing, Age Hardening, Quenching & Tempering.



**Quality Control Process-** Our quality control process is supported by Inspection Tools such as Trimos and 2D Master.





# OUR PRODUCT PORTFOLIO



Our company is engaged in the business of manufacturing ready to assemble valves components catering to different industries. These components along with other part can be assembled into Valve which are used for on-off or throttling control of non-corrosive or mildly corrosive substances.

## Valve Components



**Stem**  
Range: 1/2" - 60"  
Class: 150 PSI - 2500 PSI



**Actuator Stem**  
Range: 1 1/2" - 36"  
Class: 150 PSI - 2500 PSI



**Spline Shaft**  
Range: 2" - 48"  
Class: 150 PSI - 2500 PSI



**Trunnion Plate**  
Range: 2" - 36"  
Class: 150 PSI - 2500 PSI



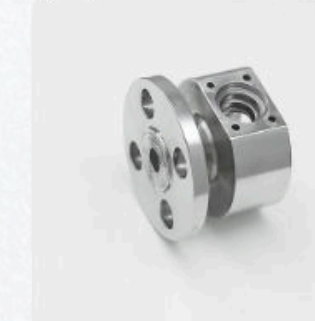
**Packing Gland**  
Range: 1/2" - 6"  
Class: 150 PSI - 2500 PSI



**Body Adaptor**  
Range: 1 1/2" - 16"  
Class: 150 PSI - 2500 PSI



**Stem Housing**  
Range: 1 1/2" - 36"  
Class: 150 PSI - 2500 PSI



**Body**  
Range: 1 1/2" - 16"  
Class: 150 PSI - 2500 PSI



**Sleeve**  
Range: 2"-20"  
Class: 150 PSI - 2500 PSI



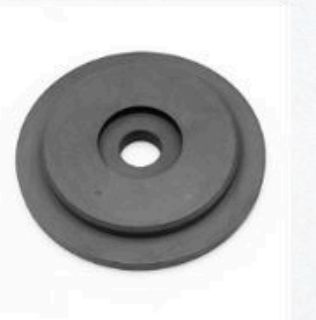
**One Piece TMBV Ball**  
Range: 1/2" - 6"  
Class: 150 PSI - 2500 PSI



**Bonnet**  
Range: 1 1/2" - 36"  
Class: 150 PSI - 2500 PSI



**Seat Ring**  
Range: 1 1/2" - 12"  
Class: 150 PSI - 2500 PSI



**Spring Button**  
Range: 1 1/2" - 36"  
Class: 150 PSI - 2500 PSI



**Lifting Lug**  
Range: 1/2" - 6"  
Class: 150 PSI - 2500 PSI



**Plug**  
Range: 1/2" - 6"  
Class: 150 PSI - 2500 PSI



**Gear Box Flange**  
Range: 1 1/2" - 36"  
Class: 150 PSI - 2500 PSI



**ISO Pad**  
Range: 1/2" - 6"  
Class: 150 PSI - 2500 PSI







# Forging Product



**Bonnet**  
Range: 1 1/2" - 36"  
Class: 150 PSI - 2500 PSI



**Clamp**  
Range: 1 1/2" - 36"  
Class: 150 PSI - 2500 PSI



**Coupling**  
Range: 1 1/2" - 36"  
Class: 150 PSI - 2500 PSI



**Elbow**  
Range: 1 1/2" - 36"  
Class: 150 PSI - 2500 PSI



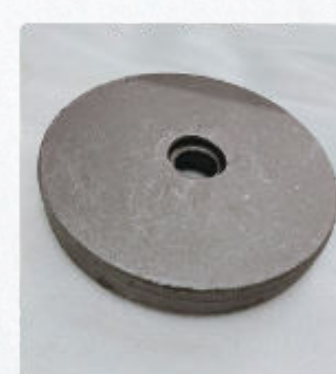
**Hinges**  
Range: 1 1/2" - 36"  
Class: 150 PSI - 2500 PSI



**Elbow Tee**  
Range: 1 1/2" - 36"  
Class: 150 PSI - 2500 PSI



**Inner Ring**  
Range: 1 1/2" - 36"  
Class: 150 PSI - 2500 PSI



**ISO Pad**  
Range: 1 1/2"  
Class: 150 PSI - 2500 PSI



**Trunnion**  
Range: 1 1/2" - 36"  
Class: 150 PSI - 2500 PSI



**Trunnion Plate**  
Range: 1 1/2" - 36"  
Class: 150 PSI - 2500 PSI



**Ball**  
Range: 1 1/2"  
Class: 150 PSI - 2500 PSI



# BUILDING SUCCESS-YEAR BY YEAR, BRICK BY BRICK



Established of  
Shrinivas Engineering

Commissioned inhouse  
forging plant initiating  
backward integration

Launched Chakan machining  
facility to enhance precision  
capabilities.

Expanded Forging Plant In  
Chakan; listed on BSE SME

2004

2014

2022

2024

1989

2011

2020-21

2023

2025

Establishment of  
Balaji Enterprises,  
the foundation of  
our expertise

Incorporated as  
Shri Balaji Valve  
Components  
Private Limited

Acquired key assets  
from Balaji  
Enterprises and  
Shrinivas  
Engineering

Converted to a  
Public Limited  
Company and  
successfully  
launched IPOO

Strengthened international  
presence amid challenging  
markets; continued  
operational and  
technology advancements  
to sustain competitive  
edge.  
Final Stages of Plant 3  
commissioning





## KEY INDUSTRIES SERVED



**Oil & Gas**



**Petrochemical**



**Power Generation**



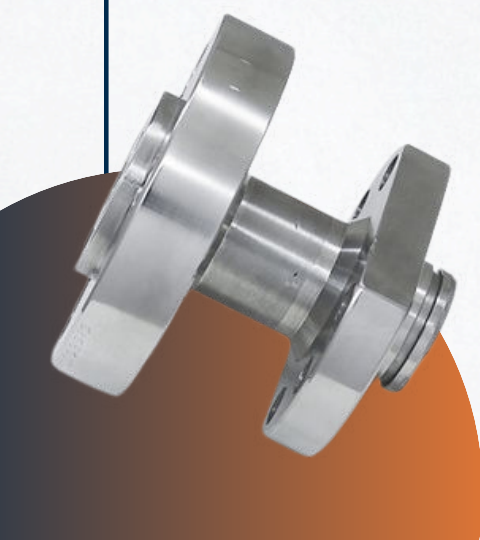
**Food & Beverage**



**Defense**



**Pharmaceuticals**





# THE MINDS THAT MOVE THE MISSION FORWARD



**Mr. Laxmikant Sadashiv Kole**  
*Chairman & Managing Director*

With over four decades in the manufacturing industry, Mr. Kole offers extensive operational and strategic leadership. Having led through various technological and regulatory shifts, he focuses on driving strategic growth, enhancing efficiency, and fostering innovation to strengthen productivity and profitability.



**Mr. Shrinivas Laxmikant Kole**  
*Whole-Time Director & CFO*

Mr. Kole combines modern business acumen with a passion for operational excellence. A Post Graduate Certificate holder in Manufacturing Management & Analytics from IIM Trichy, he leads initiatives to improve sales, customer satisfaction, and employee engagement while ensuring business continuity and strategic progress.



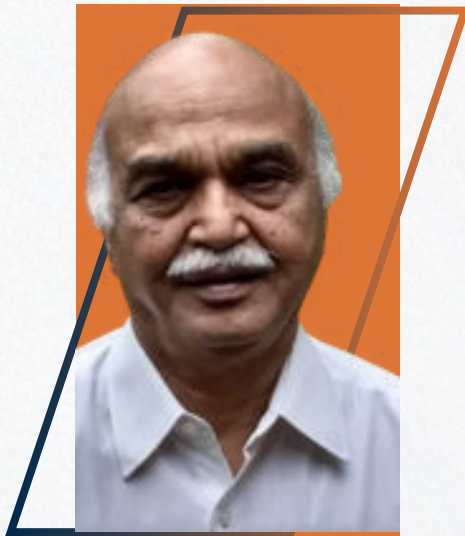
**Ms. Madhuri Laxmikant Kole**  
*Non-Executive Director*

Ms. Kole brings strong expertise in administration and human resource management. She oversees infrastructure and operational functions while nurturing a positive workplace culture. Her focus on talent development and people-centric leadership supports the company's long-term growth objectives.



**Mr. Sanker Parameswaran**  
*Independent Director*

A veteran corporate lawyer with over three decades of experience, Mr. Parameswaran has served as General Counsel & Company Secretary at ICICI Bank and currently advises RBL Bank. His expertise in legal, regulatory, and governance matters strengthens the company's compliance and strategic oversight.



**Mr. Vasudeo Ganpatdas Gujrathi**  
*Independent Director*

Mr. Gujrathi brings valuable experience in evaluating manufacturing processes, resource optimization, and implementing best practices. His independent perspective adds balance to decision-making and supports innovation and sustainable growth within the organization.



# DRIVING GROWTH THROUGH INNOVATION AND EFFICIENCY



## Enhancing Operational Efficiencies to Improve Returns

The company delivers high-quality, cost-effective products through efficient manufacturing, local sourcing, and continuous R&D, ensuring operational excellence and consistent quality



## Investing in Manufacturing Capabilities for Global Growth

The company is setting up new plants to boost growth, enhancing efficiency to meet global demand, and pursuing expansion through modernization, technology upgrades, and strategic alliances.



## Growing Geographical Presence Across India

Based in Pune, Maharashtra, the company is expanding its marketing and sales network across regions, strengthening customer relationships through local presence, and ensuring consistent value with quality, timely delivery, and reliability.



## Expanding and Deepening Customer Relationships

The company builds lasting customer relationships through customized solutions, expands its base with technology expertise, extends presence beyond key regions, and ensures quality, timely delivery, and competitive pricing.



## Commitment to Quality and Customer specifications

The company ensures strict adherence to quality standards through continuous inspections and timely corrections, building customer trust and long-term relationships based on consistent excellence and reliability.





# DOMESTIC AND INTERNATIONAL PRESENCE



This global footprint underscores SBVCL's commitment to delivering high-quality valve components to a diverse customer base.



# OUR MANUFACTURING FACILITY



Two manufacturing facilities in Pune: Bhosari & Chakan MIDC.

## Machining Plant Capacity

Particulars	FY 2023-24	FY 2024-25	H1FY25	H1FY26
Installed Capacity (In Nos)	3,93,800	3,93,800	1,96,900	2,36,280
Actual Production (In Nos)	3,06,768	2,61,901	1,10,344	1,86,795
Capacity Utilization (in %)	77.90%	66.51%	56.04%	79.06%

## Forging & Heat Treatment Plant Capacity

Particulars	FY 2023-24	FY 2024-25	H1FY25	H1FY26
Installed Capacity (In Kg)	11,00,000	21,60,000	10,80,000	10,80,000
Actual Production (In Kg)	6,50,573	5,90,097	2,77,464	5,59,540
Capacity Utilization (in %)	59.14%	27.32%	25.69%	51.81%





# INDUSTRY OVERVIEW



## GROWTH DRIVERS OF THE INDIAN & GLOBAL VALVE INDUSTRY



### Government investment in Water & Waste-water Projects

Govt. programs (Jal Jeevan Mission, AMRUT 2.0) boosting demand for gate, globe & butterfly valves.



### Power Sector Growth

Super- critical thermal plants and renewable projects (500 GW by 2030) spurring valve demand.



### Infrastructure Expansion

Massive investments in water networks, expressways & energy systems increasing demand for durable, smart valves.



### Industrial Automation

Shift toward AI-enabled and IoT-integrated smart valves improving performance monitoring & predictive maintenance.



### Oil & Gas Expansion

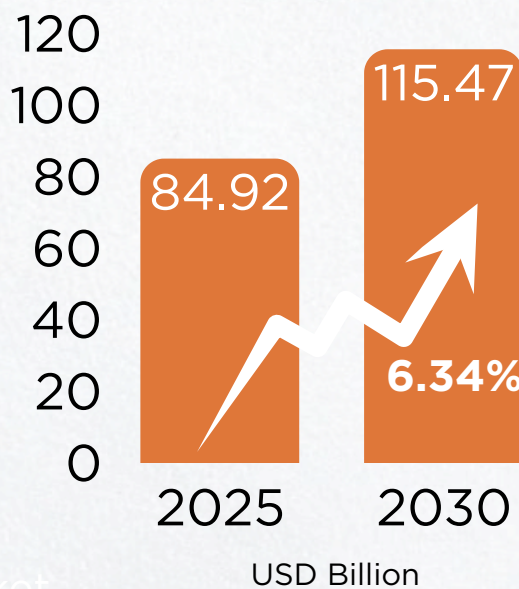
Rising upstream & midstream investments driving need for high-pressure, emission-compliant, and sensor-equipped valves.



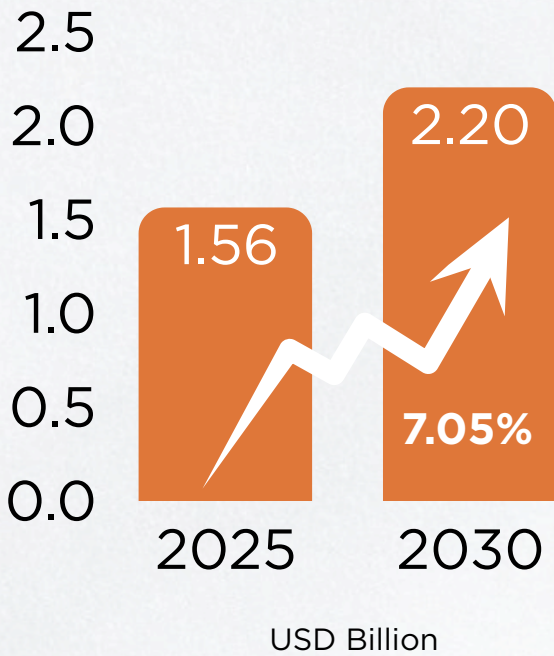
### Chemical & Process Industry

USD 142 B downstream investments creating demand for specialty and corrosion-resistant valves.

## GLOBAL INDUSTRIAL VALVE MARKET



## INDIA INDUSTRIAL VALVE MARKET



Source: <https://www.mordorintelligence.com/industry-reports/india-industrial-valves-market>  
<https://www.mordorintelligence.com/industry-reports/global-valves-market>



# EMERGING SECTORS



## Smart Valves and IIoT

### Integration of Sensors & Data Analytics

Enhancing control and monitoring capabilities through Industrial IoT (IIoT) technologies.



## Sustainability and Efficiency

### Focus on Eco-friendly Designs

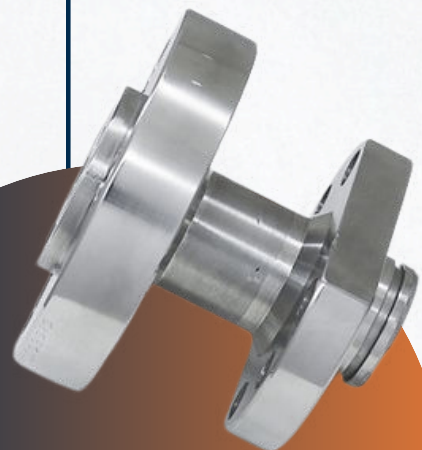
Increasing emphasis on reducing emissions and minimizing energy consumption through innovative materials.



## Customization and Speciality Valves

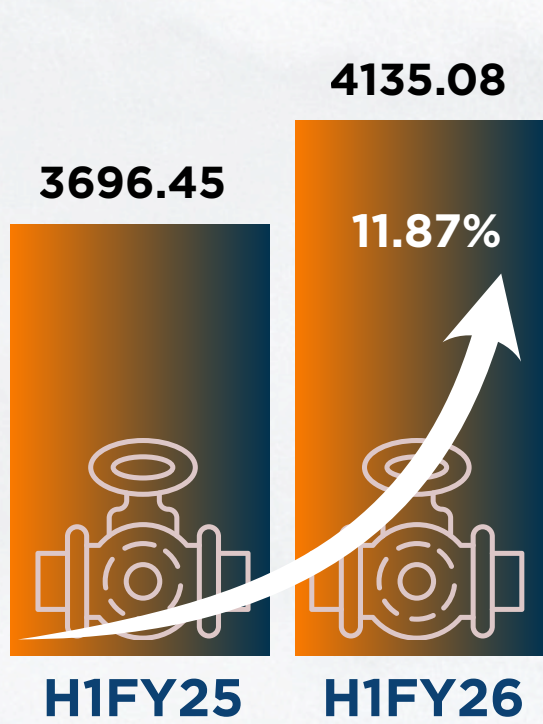
### Tailored Solutions

Growing demand for specialized and custom-designed valves to meet unique industry needs.

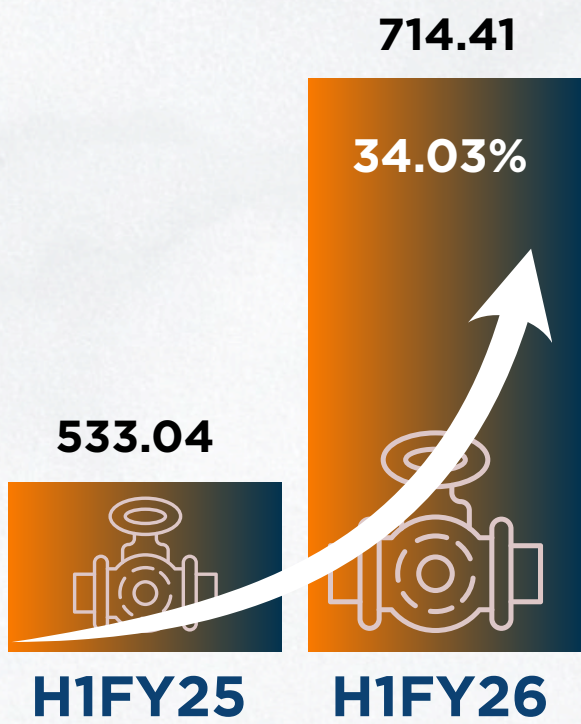




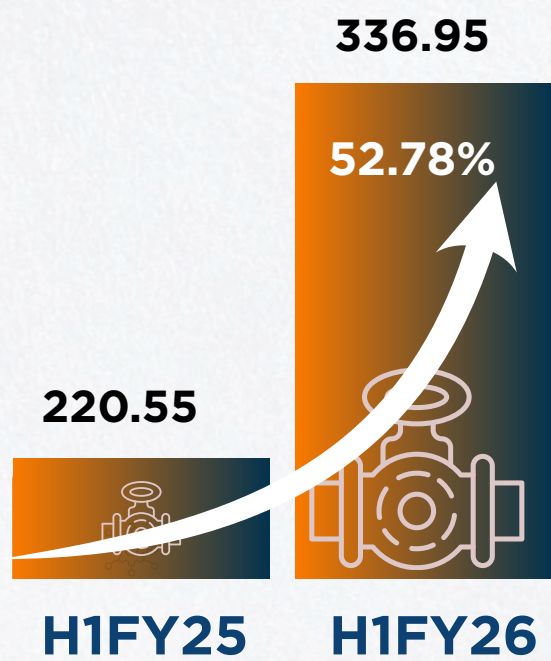
# FINANCIAL PERFORMANCE SNAPSHOT



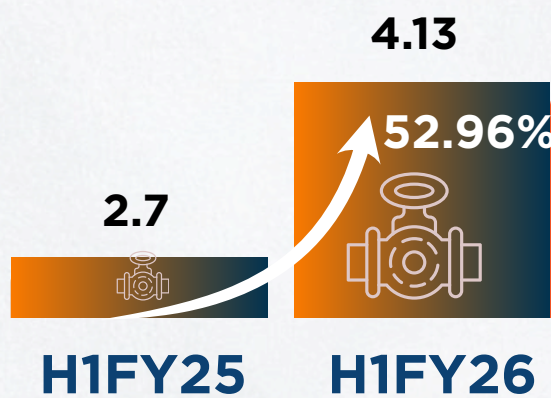
**REVENUE FROM OPERATIONS**  
(₹ in Lakhs)



**EBITDA**  
(₹ in Lakhs)



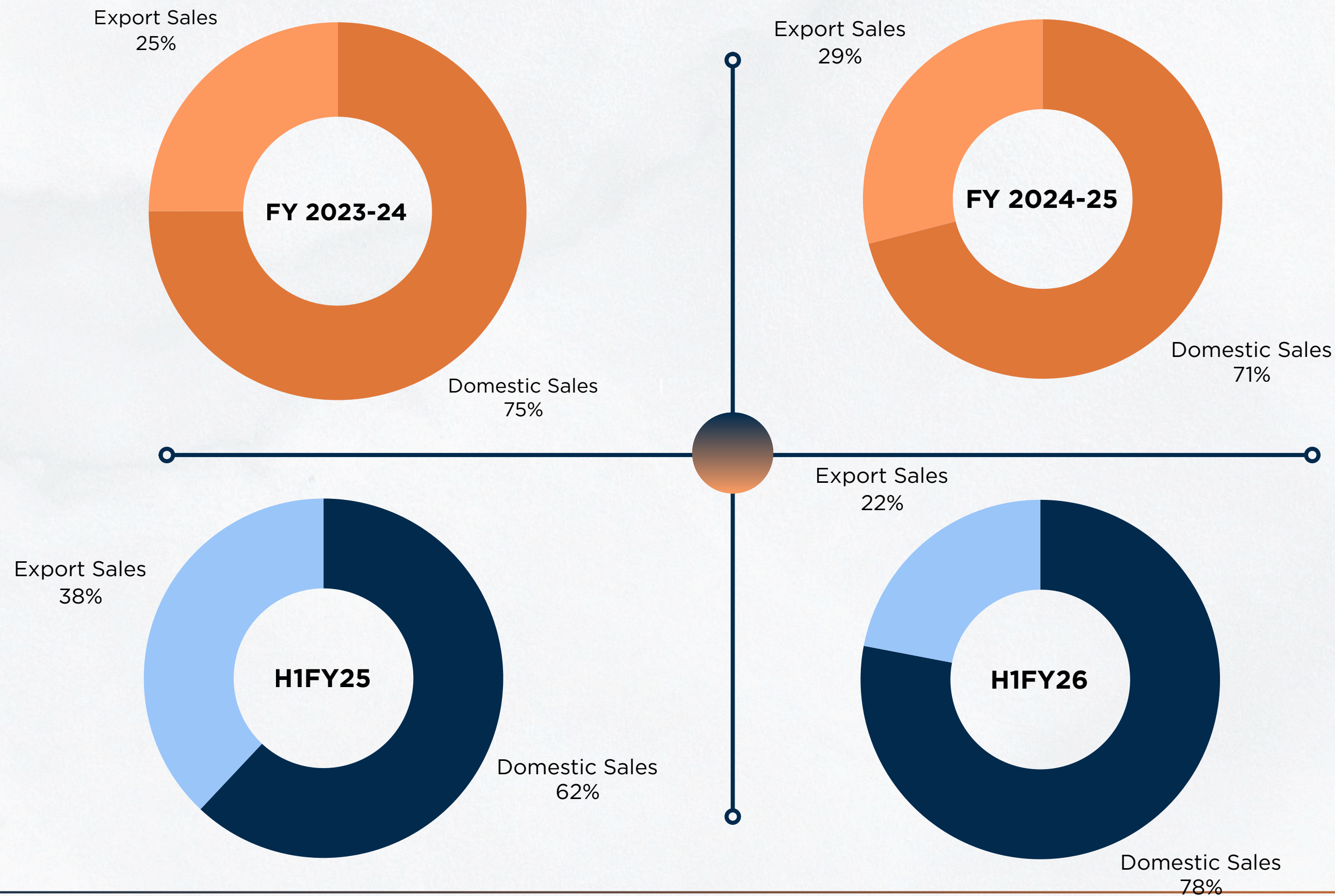
**PAT**  
(₹ in Lakhs)



**EPS**  
(₹)



# REVENUE BIFURCATION





# H1FY26 Results: Strong YoY Momentum



(₹ in Lakhs)

Particulars	H1FY25	H1FY26	YoY%
<b>Revenue from Operations</b>	<b>3696.45</b>	<b>4135.08</b>	<b>11.87</b>
Other Income	51.09	62.38	22.1
Total Income	3747.54	4197.46	12.01
COGS	2215.9	2415.46	9.01
<b>Gross Profit</b>	<b>1531.64</b>	<b>1782</b>	<b>16.35</b>
<b>Gross Profit %</b>	<b>41.44</b>	<b>43.09</b>	<b>4</b>
Operating & Other Expenses	998.6	1067.59	6.91
<b>EBITDA</b>	<b>533.04</b>	<b>714.41</b>	<b>34.03</b>
<b>EBITDA %</b>	<b>14.42</b>	<b>17.28</b>	<b>19.81</b>
Depreciation	164.41	187.55	14.07
Finance Cost	76.22	69.92	-8.27
<b>Profit Before Tax</b>	<b>292.41</b>	<b>456.94</b>	<b>28.22</b>
PBT %	7.91	11.05	237.79
Tax Expenses	71.86	119.99	66.98
<b>Profit After Tax</b>	<b>220.55</b>	<b>336.95</b>	<b>52.78</b>
<b>PAT %</b>	<b>5.97</b>	<b>8.15</b>	<b>36.57</b>
EPS	2.7	4.13	52.96

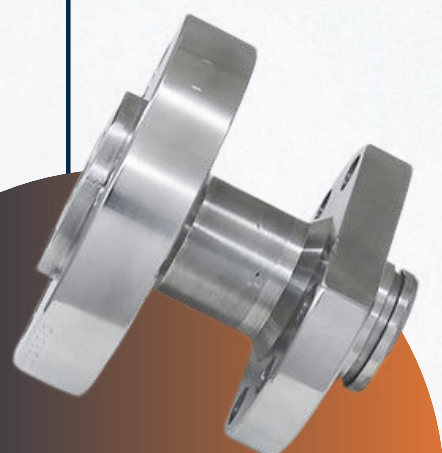


This presentation and the accompanying slides (the "Presentation"), which have been prepared by Shri Balaji Valve Components Limited (the "Company"), have been prepared solely for information purposes and do not constitute any offer, recommendation or invitation to purchase or subscribe for any securities, and shall not form the basis or be relied on in connection with any contract or binding commitment whatsoever. No offering of securities of the Company will be made except by means of a statutory offering document containing detailed information about the Company.

This Presentation has been prepared by the Company based on information and data which the Company considers reliable, but the Company makes no representation or warranty, express or implied, whatsoever, and no reliance shall be placed on the truth, accuracy, completeness, fairness and reasonableness of the contents of this Presentation. This Presentation may not be all inclusive and may not contain all of the information that you may consider material. Any liability in respect of the contents of, or any omission from, this Presentation is expressly excluded.

Certain matters discussed in this Presentation may contain statements regarding the Company's market opportunity and business prospects that are individually and collectively forward-looking statements. Such forward-looking statements are not guarantees of future performance and are subject to known and unknown risks, uncertainties and assumptions that are difficult to predict. These risks and uncertainties include, but are not limited to the performance of the Indian economy and of the economies of various international markets, the performance of the industry in India and world-wide, competition, the Company's ability to successfully implement its strategy, the Company's future levels of growth and expansion, technological implementation, changes and advancements, changes in revenue, income or cashflows, the Company's market preferences and its exposure to market risks, as well as other risks. The Company's actual results, levels of activity, performance or achievements could differ materially and adversely from results expressed in or implied by this Presentation. The Company assumes no obligation to update any forward-looking information contained in this Presentation. Any forward-looking statements and projections made by third parties included in this Presentation are not adopted by the Company and the Company is not responsible for such third-party statements and projections. All Maps used in Presentation are not to scale.

All data, information and maps are provided 'as is' without warranty or any representation of accuracy, timeliness or completeness



Abhishek Bhutra | Himanshu Jain  
+91 80006 85556 , +91 89051 81853  
investorrelation@finportal.in.com





**THANK YOU**