

**Date: March 22, 2026**

**To,**  
**National Stock Exchange of India Limited**  
Exchange Plaza, Plot No. C/1, G-Block Bandra  
Kurla Complex, Bandra (E) Mumbai – 400 051

**To,**  
**BSE Limited**  
Phiroze Jeejeebhoy Towers Dalal Street  
Mumbai – 400001

**Trading Symbol: CEINSYS**

**Scrip Code: 538734**

**Subject: -** Submission of Investor Presentation

**Reference:** Regulation 30 of Securities and Exchange Board of India (Listing Obligations & Disclosure Requirements) Regulations, 2015 ('Listing Regulations').

**Dear Sir/Madam,**

Further to our letter dated March 16, 2026, and pursuant to regulation 30 of SEBI (Listing Obligations and Disclosure Requirements), Regulations 2015, as amended, please find enclosed herewith Investor Presentation that will be made by the representatives of the Company at the meeting of Investor/ Analyst scheduled to be held tomorrow i.e. on Monday, March 23, 2026.

This is for your information and record.

**Thanking You,  
For Ceinsys Tech Limited**

**Pooja Karande  
Company Secretary &  
Compliance Officer  
M. No. A54401**

**Place: Nagpur**

**Encl: As above**



# Investor Presentation

March 2026

## Ceinsys Tech Ltd.

Registered Office:

10/5, IT Park, Opposite VNIT, Nagpur 440022, Maharashtra,  
India

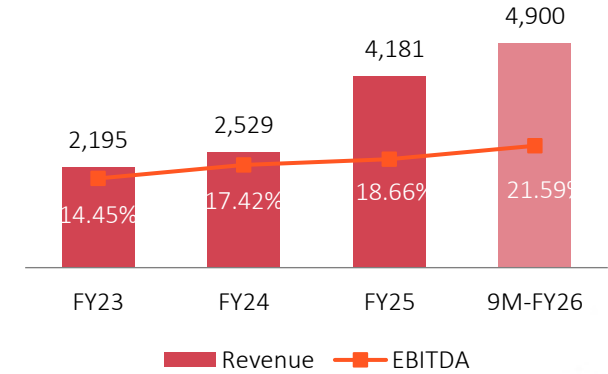
CIN: L72300MH1998PLC114790



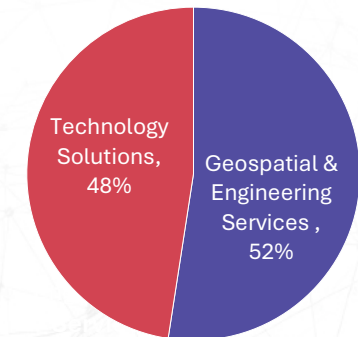
# CS TECH Ai Overview

- **27-year legacy of innovation** – incorporated in 1998 and BSE-listed, CMMI-Level 5 firm focused on high-impact technology services.
- **Pure-play focus on Geospatial, Mobility & Emerging Tech** – end-to-end GIS data services, enterprise Web GIS/DSS, and full-vehicle product & industrial automation engineering create a seamless geo-mobility value chain.
- **Strategic expansion** – AllyGrow Technologies(a specialized player in Mobility product-engineering & industrial-automation) was acquired in 2022 to launch the Mobility vertical; the 2024 addition of US-based reality-capture business of VTS brings 3D scanning, digital-twin capability, and a North-American delivery base.
- **Global footprint** – 1,200+ professionals across India, United States, United Kingdom and Germany provide follow-the-sun support and local market proximity.
- **Flagship national programs** – GIS-driven water-infrastructure and equitable-distribution solutions for complex initiatives such as Jal Jeevan Mission, backed by proprietary Decision Support Systems.
- **Marquee client roster** – trusted by global utilities, transport authorities, telecom operators, manufacturing OEMs and public agencies for mission-critical projects.
- **Deep, continuing investment in Emerging Tech** – dedicated “Tech-Play” unit advancing AI, ML, IoT, VR/AR, digital twins and embedded electronics for industry-ready platforms.
- **Proven scale & impact** – 15,500+ miles of water network mapped, 650 k miles of hi-res imagery processed, and 5.5 million engineering hours executed for global clients.
- **Comprehensive Manufacturing Solutions** – concept-to-plant services for passenger cars, CVs, off-highway and 2 wheelers accelerate electrification and digital manufacturing programs.
- **Sustainable, future-ready outlook** – Internal investments prioritized for AI-powered automation, smart-city digital twins and next-gen embedded mobility electronics, enabling clients to move up the value chain.

**Business Performance \*  
Operational Revenue (INR Mn) and EBITDA  
Margins (%)**



**9M-FY26 Revenue Break Up (%)**



\* This business performance will differ from Consolidated Numbers due to intercompany transaction adjustments. JV business performance is not reflected in the company's consolidated numbers







# Repeatable, Predictable, Proven. Consistent Growth driven by Delivery and Demand

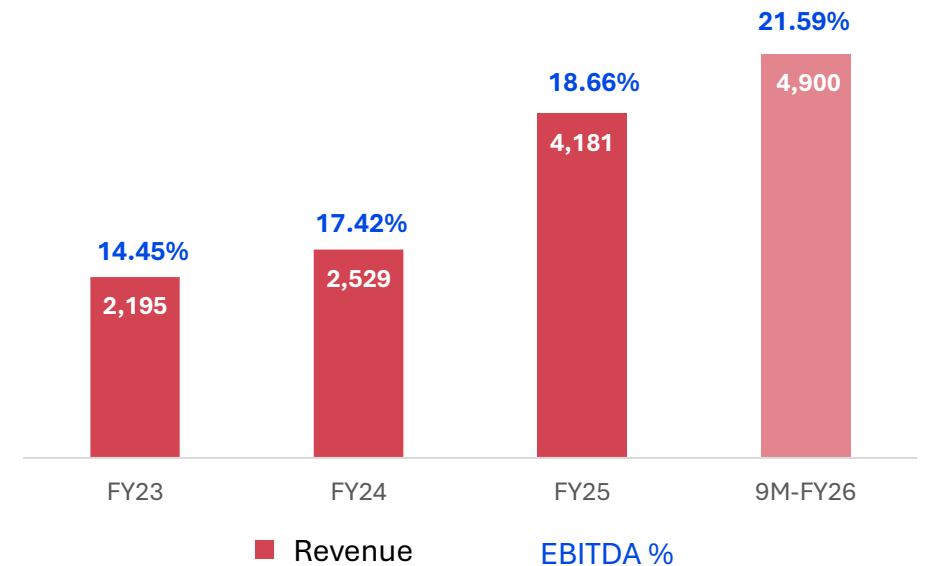
All figures in INR Million

## Consistent Results in an Inconsistent Market

While most players are struggling with slow procurement cycles, funding winter, and delayed decision-making:

-  CS TECH Ai has delivered continuous years of positive revenue growth
-  100+ projects being executed with zero client churn
-  Healthy pipeline across Government, PSU, and Infra Enterprises
-  Early international traction in MEA despite macro headwinds

Business Performance  
Operational  
Revenue & EBITDA Margins (%)

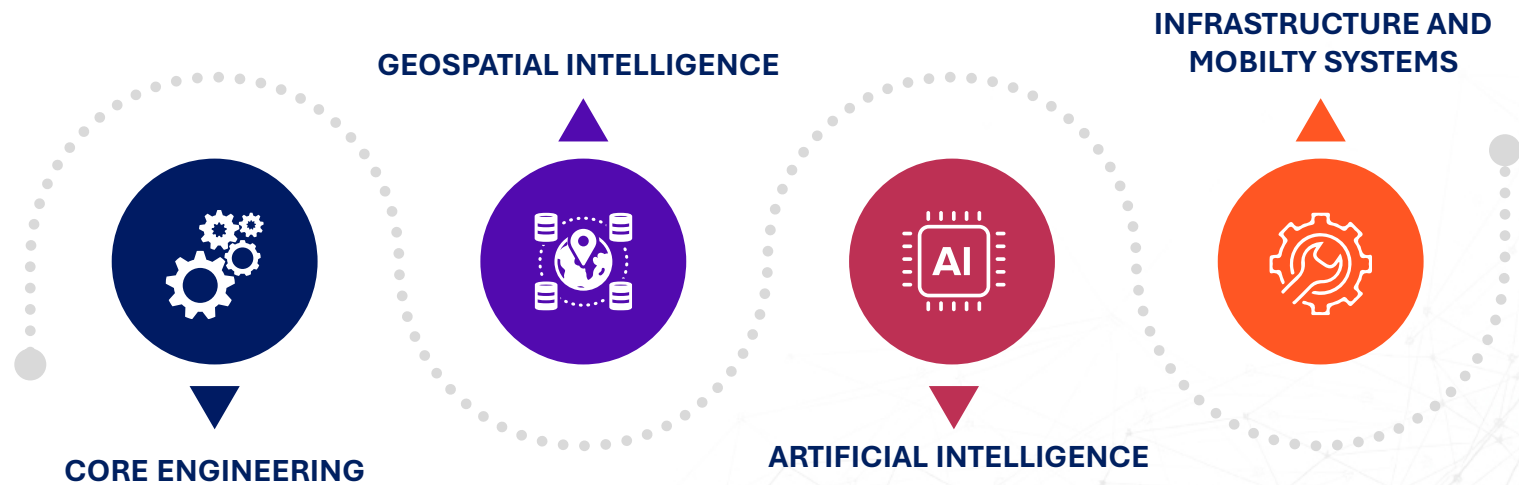


# The Current Scenario: The World is Urbanizing, Ageing, and Digitizing Infrastructure must keep up

Today's decisions about cities, utilities, and transport demand real-time, intelligent, and predictive support.

That's where **CS TECH Ai** comes in - transforming how infrastructure is imagined, built, and maintained.

Unlike any other player, we operate at the intersection of:



**CS TECH Ai** delivers high-impact solutions for governments, smart cities, utilities, mobility, and industrial assets.

# Business credentials & market potential



**27+** Years  
of Proven Performance



**200+ Customers**  
50% business from  
repeat Customers



**1,200+**  
Dedicated and technically  
qualified employees



**Pure-Play**  
GIS and TS  
Services Company



**Global Footprint**  
Presence across US, UK,  
Germany & India



GIS

**100K+ Miles**  
Electrical Network  
Processed & analyzed



GIS / ES

**35K+ Miles**  
of Water Network  
Designed & Implemented



GIS

**650K+ Miles**  
High Resolution Image Data  
for Business Intelligence



GIS

**2.2 Mn Sq. Ft.**  
Infrastructure analyzed



ES

**7 Mn+ Hours**  
of Engineering Services  
delivered



**Order Book**  
to be executed **INR 9,990 Mn.**  
as of 31<sup>st</sup> December 2025



GIS

**Awarded**  
Prestigious River Linking  
Project of **INR 3,810 Mn.**

## Finance Budget 2025-26 Announcements for Geospatial Sector-



**Jal Jeevan Mission**  
Extended till 2028 to  
achieve 100% coverage



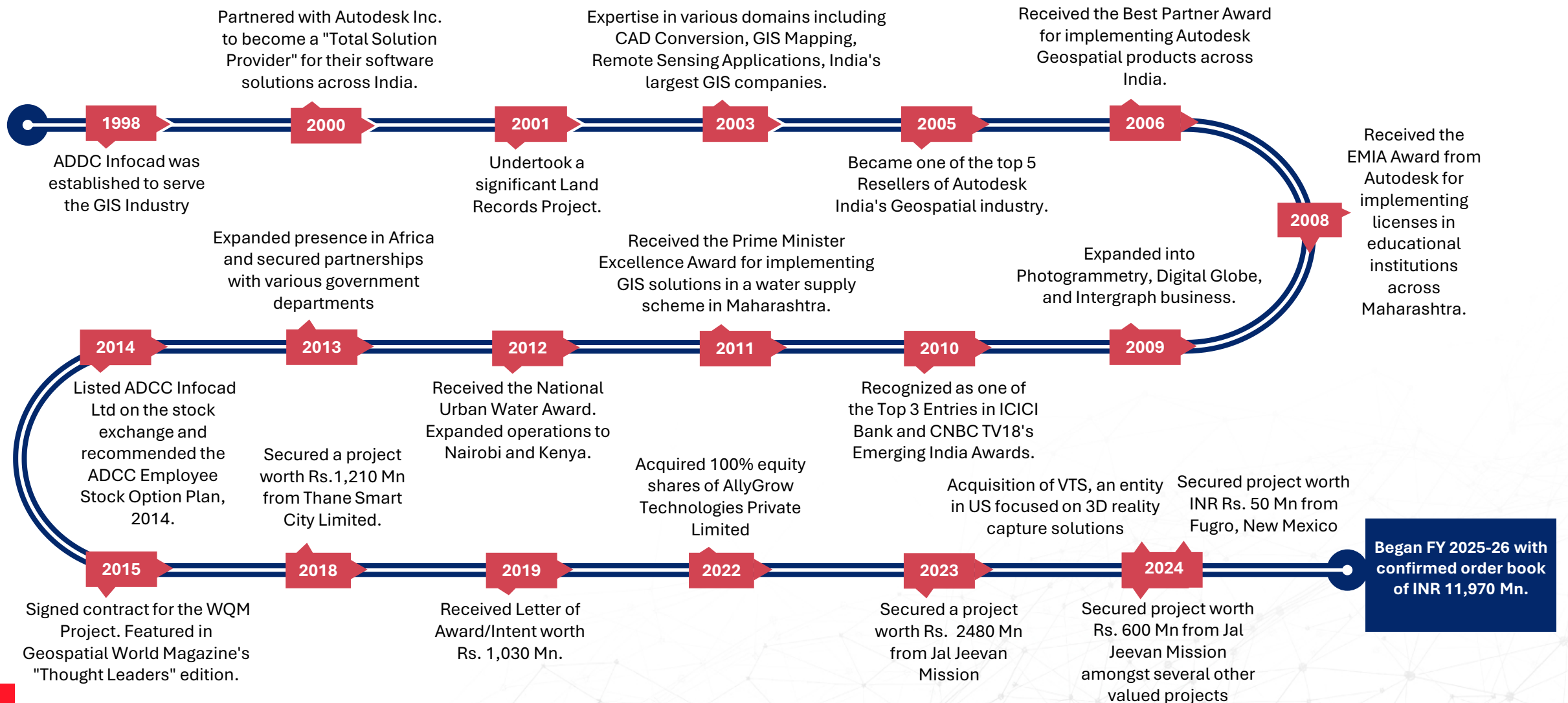
Modernization of land  
records, Urban Planning  
Design of infrastructure

National Geospatial  
mission to be started using  
PM Gati Shakti  
And many more initiatives  
with high funds allocation

# Strategic Partners



# Key Milestones



# Board of Directors & Leadership team



## Mr. Sagar Meghe- Chairman and Whole time Director

Sagar Meghe brings a distinguished legacy of entrepreneurship and institution-building, with deep-rooted experience across education, healthcare, and governance. As Chairman of CS TECH Ai, he plays a key role in shaping the company's strategic direction and institutional alignment. With a long-standing commitment to technology-led development, he champions the company's mission of delivering impactful solutions across geospatial, mobility, and AI-powered infrastructure domains. Sagar is also known for his philanthropic initiatives and belief in enhancing possibilities through inclusive progress, education, and public service.



## Mr. Prashant Kamat – Additional Director under Non-Executive, Non-Independent Category

Prashant Kamat is a proven techno-commercial leader with deep expertise in engineering, manufacturing, & digital transformation. Over a career spanning nearly three decades, he has held leadership roles across global delivery, operations, & business growth. He previously led Mahindra Engineering Services & founded AllyGrow Technologies, a specialized product engineering and manufacturing services firm later acquired by CS TECH Ai. Here, Prashant has been instrumental in expanding the company's presence across geospatial, mobility, & emerging technologies, while aligning execution excellence with long-term strategic priorities.



## Mr. Kaushik Khona - Managing Director, India Operations

Kaushik Khona brings a broad & accomplished leadership background with over three decades of experience across aviation, pharmaceuticals, agro-processing, textiles, and energy. A Chartered Accountant, Company Secretary, Cost Accountant, & Law graduate, he is known for his strategic foresight, turnaround management capabilities, & disciplined execution. At CS TECH Ai, he leads India operations with a focus on operational efficiency, governance, & business growth. Kaushik previously served as CEO of Go Air & has held senior leadership roles in several flagship companies of the Wadia Group and other industrial conglomerates.



## Dr. Abhay Kimmatkar - Managing Director

Abhay Kimmatkar is a business leader with over two decades of experience in geospatial and infrastructure related technologies. He has played a pivotal role in driving innovation, forging strategic partnerships, and delivering impactful solutions at CS TECH Ai. Abhay has championed the adoption of technologies like GeoBIM, AIoT, and 3D City Mapping, significantly improving operational efficiency. A seasoned technocrat with a PhD in Business and Marketing, he has led initiatives that strengthened the company's position across India's public and private sector ecosystems.

# Independent Directors



## CA Dhruv Subodh Kaji

C.A. Dhruv Subodh Kaji is a distinguished Chartered Accountant known for his strategic leadership across finance, governance, and business advisory. He has held senior roles including Finance Director at Raymond Ltd. and Executive Director at Pinesworth Holdings. His board affiliations include HDFC Asset Management Co. Ltd., TV18 Broadcast Ltd., CS TECH Ai, and several Welspun entities. With deep expertise in evaluating complex business initiatives, he continues to offer strategic counsel across industries such as media, infrastructure, chemicals, and energy.



## Dr. Satish Wate

Dr. Satish Wate is a distinguished environmental expert and policy advisor with over four decades of experience in environmental science, health, and sustainability. A former Director of CSIR-NEERI, he has advised various ministries on public health and environmental strategies. His work spans advanced research in water quality, solid waste management, and environmental biotechnology. He serves on expert committees of the WHO, Ministry of Jal Shakti, and MoEFCC. At CS TECH Ai, he contributes his domain expertise to guide large-scale infrastructure and sustainability-focused initiatives across sectors.



## Mr. Kishore P. Dewani

Kishore P. Dewani brings over four decades of leadership experience across the pharmaceutical, medical, and life sciences industries. He previously held senior positions at global firms like Pfizer and served as CEO at Ranbaxy Malaysia and President-APAC at Terumo India. His career includes driving growth strategies, market expansion, and operational excellence across international markets. At CS TECH Ai, he provides strategic guidance on global expansion, regulatory alignment, and customer-centric execution, particularly in high-compliance industries where quality, innovation, and governance are critical to success.



## Mr. Phaneesh Murthy - Non-Executive Independent Director

Phaneesh Murthy is a global business leader with over three decades of experience in the IT services and consulting industry. He played a pivotal role in transforming Infosys into a global powerhouse and later led iGATE Corporation as CEO, steering its turnaround and growth before its acquisition by Capgemini. At CS TECH Ai, he provides strategic guidance on global expansion, operational scalability, and digital transformation. His expertise lies in driving growth through innovation, client-centric delivery models, and building agile, globally competitive service organizations.



## Mrs. Maya Swaminathan Sinha

Maya Swaminathan Sinha is a seasoned civil servant and corporate strategist with extensive experience across trade, infrastructure, and investment promotion. A former Indian Revenue Service officer, she has served with distinction in government roles before transitioning to leadership positions in companies such as IL&FS and the National Investment Promotion and Facilitation Agency (Invest India). At CS TECH Ai, she brings a unique blend of public policy insight and corporate governance acumen, advising on regulatory strategy, ESG frameworks, and sustainable growth initiatives across geographies.

# Key Managerial Personnel



## **Mr. Rahul Joharapurkar – COO**

Rahul Joharapurkar brings over two decades of experience in geospatial and engineering technology operations. At CS TECH Ai, he oversees India-based delivery, ensuring streamlined execution across Telecom, Utilities, Smart Infrastructure, and AEC sectors. He plays a key role in operationalizing advanced technologies such as LiDAR, BIM, and AI-powered spatial analytics. Known for his execution focus and client-centric mindset, Rahul has been instrumental in scaling teams, improving delivery processes, and ensuring high-impact outcomes across mission-critical projects.



## **Amita Saxena – CFO**

Amita Saxena, a Chartered Accountant, is a finance and strategy leader with 18+ years across infrastructure, real estate, education, healthcare, and technology. As CFO of CS TECH Ai, she oversees treasury, controllership, FP&A, and compliance, driving governance, forecasting, and disciplined capital allocation. She has executed complex M&A and joint ventures, including the DMIHER-Adani Foundation collaboration, and led ERP and compliance initiatives. Previously with Meghe Group, Godrej Properties, and SMS Group, she aligned financial strategy with growth while building high-performing finance teams.



## **Dr. Manish Ingle – Vice President (Water)**

Dr. Manish Ingle has accumulated over 24 years of professional experience. He holds a PhD in Commerce and Management along with a Bachelors degree in Electronics Engineering. He is a member of Institute of Engineers, India (IEI), IWA and IWWA. As a Water Business Unit Head at CS TECH Ai, he plays a significant role in business strategies, conceptualization of new projects on upcoming technologies and team building for water business unit. Throughout his career, he has managed multiple projects, showcasing his capability in handling complex tasks and leading initiatives within the industry.



## **Mr. Prakash Yadav – Senior Vice President (Energy)**

Prakash Yadav, Senior Vice President, Energy, is an experienced business and domain expert, specialized in creating business value through technology solutions for Utilities. He comes with more than 22 years of experience in T&D and Power Generation business, and has contributed to the success of business strategies and technology investments. His comprehensive understanding of the operations, regulations, policies, and technologies enables him to deliver enterprise-grade Geospatial and Engineering solutions.



## **Mr. Anand Paranjape – Vice President (Mobility Operations)**

Anand Paranjape leads the Mobility delivery/operations at CS TECH Ai, bringing over 30 years of experience in engineering services, product development, and manufacturing services. He has held leadership roles at Bajaj Auto, Mahindra Engineering, and Tech Mahindra, and was instrumental in the growth of AllyGrow Technologies where he led the presales activities. Anand is known for establishing client-centric delivery models & executing them with operational precision.



## **Mr. Tarun Bisht- Vice President (Product Solutions)**

Tarun Bisht has over 10 years of work experience, he has spent more than 5 years at CS TECH Ai as Vice President (Business Development), where he heads the software sales business leading a team of 25 plus- growing to 50 employees. He collaborates closely with various OEMs like Autodesk, Bentley, Siemens, ESRI etc, leveraging his skills to drive growth and innovation. He is passionate about fostering strong business relationships and continuously seeks to expand his knowledge in the industry.

# Our Human Capital - A Key strength



**Average Age of Employees** – 33 years  
**Well Qualified team:** 82% Engrs, PhD, M.Tech, MS,  
18% - ITI-Diploma holder



## Continuous learning and development:

- Over 17k manhours of training in a year
- More than 600 Professional certifications and MDP for key members of CS TECH Ai



## Ethics and Values:

- Believe in power of collaboration
- Respect diverse perspectives
- Non- negotiated Integrity



## Our culture: Where we encourage unconventional thinking

Because we are passionate about building strong connections that fuel our shared success



## Recognition of Performance of employees by:

- Issue of ESOPs to Employees
- Performance Linked Incentives paid year on year- in addition to fixed compensation



**Training efficiency Index:** 100%

**Employee Satisfaction score-** 3.9/5 and improving



## We commit to client partnership

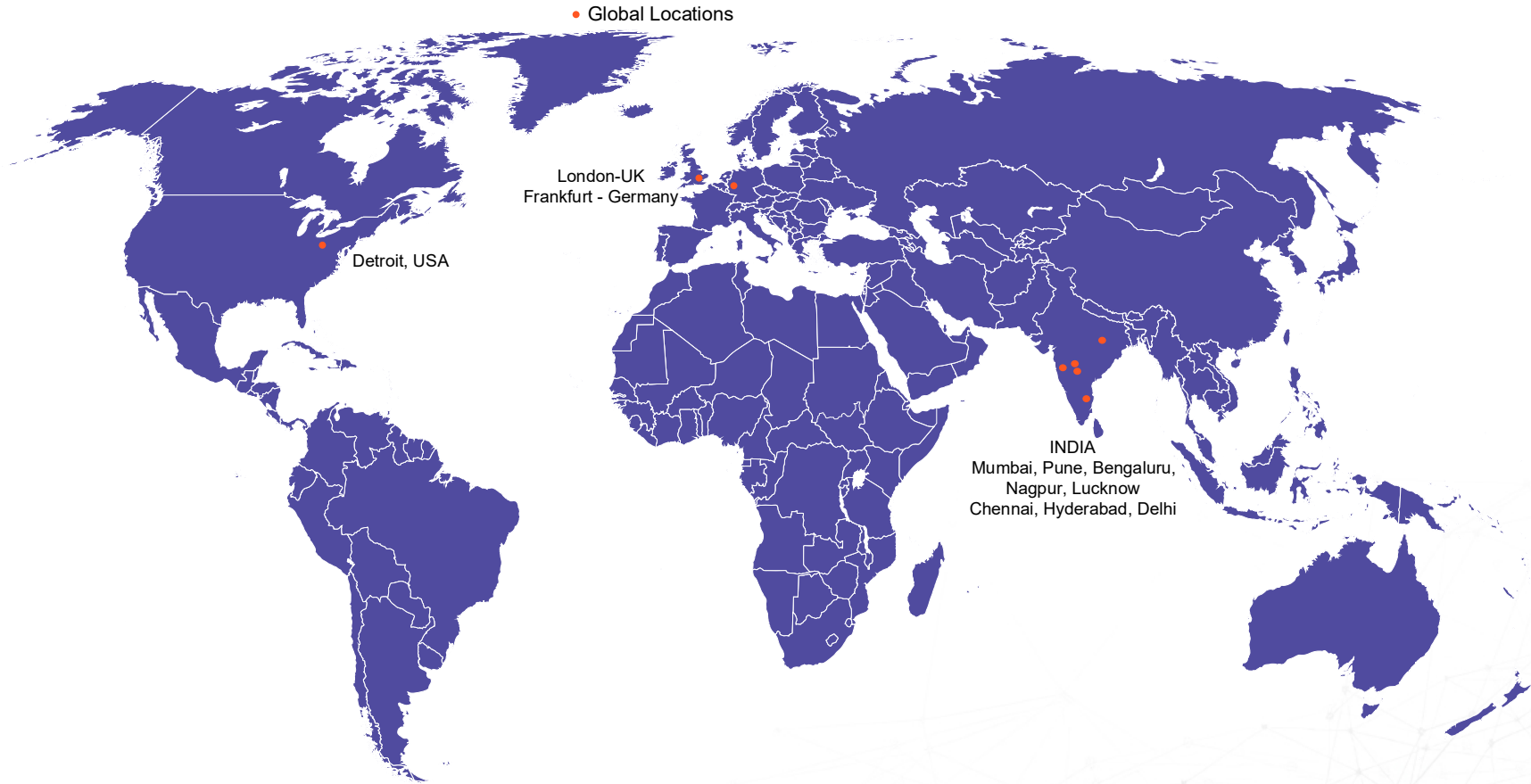
Because we know our creativity and ingenuity can help us translate ambitions into reality



## Great Place To Work® Certified™

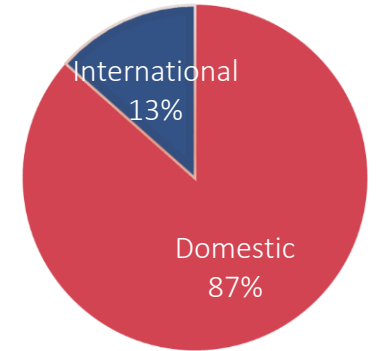
Certification based on employee experience and feedback, reaffirming our commitment to a strong and inclusive workplace culture.

# Geographical Presence



## REVENUE SPLIT – FY25

### GEOSPATIAL & ENGINEERING SERVICES



### TECHNOLOGY SOLUTIONS



# Sector and Services Overview

# Problem & Opportunity



**1** Infrastructure planning is outdated, slow, and fragmented

**2** GIS systems are passive and underutilized

**3** Data sources (satellites, drones, IoT) are under-leveraged

**4** Manual decision-making leads to cost, inefficiency, and risk



**Opportunity**

We use **AI + Geospatial Intelligence** to drive smarter and faster decisions at scale

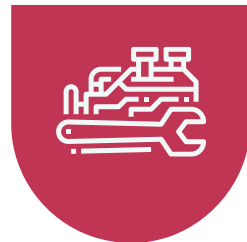


# What we do differently

A full-stack geospatial AI platform powering intelligent infrastructure.



Real-time Data Integration  
from drones, satellites,  
sensors



Actionable insights for  
planning, maintenance, and  
operations



AI-driven **Digital Twins** of  
assets, cities, utilities



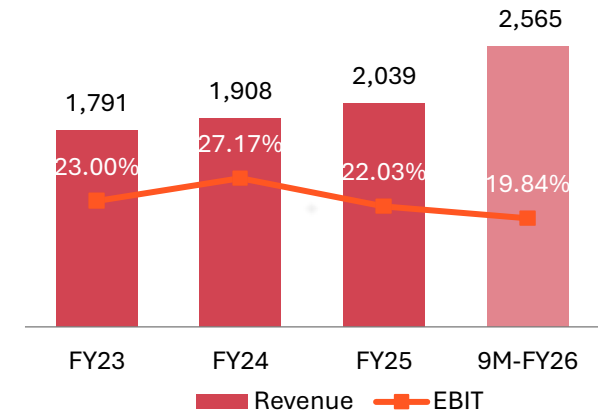
Visual dashboards for  
Smart Decisioning

We don't just build tech –we engineer outcomes.

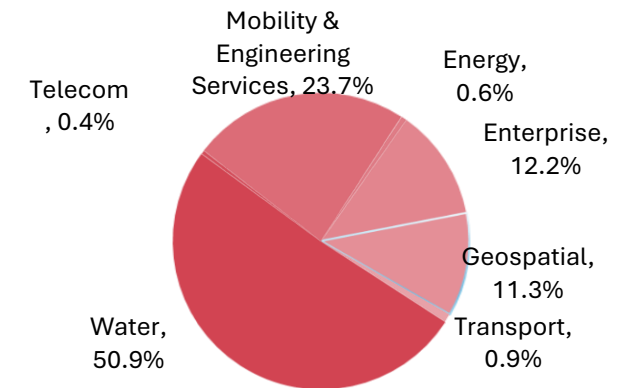
# Services Overview: Geospatial, Mobility, Emerging Tech

- Over two decades, CS TECH Ai has helped governments and enterprises worldwide harness spatial intelligence for planning, compliance, and asset management.
- Geographic information and geospatial analytics now underpin how organizations comprehend, monitor, and model real-world change.
- Core industries served on the geospatial side include Water, Energy, Transportation, Oil & Gas, Telecom, and Land & Natural Resources.
- The firm designs and deploys tailored geospatial platforms that turn location data into faster, more informed operational decisions.
- In parallel, its Mobility vertical delivers full-cycle vehicle and manufacturing engineering—concept design, CAE validation, digital factory planning, and robotics—for 2/3-wheelers, passenger cars, CVs, and off-highway equipment.
- The mobility vertical also specializes in automotive seatings & interior development. These services are also offered in a form of Joint Venture – AllyGram (70% owned by CS TECH Ai & 30% by Grammer AG) to Grammer AG.
- Advanced capture technologies such as LiDAR, UAV photogrammetry, laser scanning, and high-density mapping ensure precision inputs for every geospatial engagement.
- Ongoing investment in digital twins, AI/ML, connected-vehicle IoT, and embedded electronics keeps both geospatial and mobility offerings future-ready.

**Business Performance**  
Operational Revenue (INR Mn ) And EBIT Margins (%)



**FY25 Geospatial & Engineering Services Segmental Mix**



# Geospatial : Industries covered



## Water

- Non-Revenue Water Management
- IoT Solutions for Water Supply Management
- Water Infrastructure Management
- Project Management Consultancy
- Detailed Design & Consultancy



## Energy

- Powerline Design & Modelling
- Digital Twin
- Grid Automation
- Operational Data Infrastructure
- Vegetation/ROW Management
- Managed Services



## AEC & BIM

- Infrastructure Modeling
- BIM
- Infrastructure Management
- Digital Project Management System



## Oil & Gas

- GIS & Engineering
- Delivery Route Optimization
- Operational Analytics
- Unified Pipeline data management enterprise solution
- Digital Twin



## Transportation

- Asset Monitoring & Management System
- GIS & Engineering
- Detailed Design & Consultancy
- Project Supervision & Audit
- Digital Project Management System
- Digital Navigation



## Telecom

- Network & Fibre Planning
- GIS & Engineering
- Digital Twin
- WebGIS Enterprise Solution

# Geospatial : Service offerings



## Geospatial Services

- Feasibility Modelling
- Predictive Analytics & Risk Estimation
- Change Management
- Impact Analytics



## Geospatial Analytics

- Feasibility Modelling
- Predictive Analytics & Risk Estimation
- Change Management
- Impact Analytics



## Engineering Support

- As-Built Drawings
- Base Map Creation
- L-Section & Cross Section creation
- Quantity Take Off
- Design & Planning
- 3D Model, Elevation & Sections



## Digital Enterprise

- Application Design, Development & Management
- Intelligent Decision Support Systems
- Geoportals & Dashboards
- Cutting Edge Technology Implementations: Big Data, IoT, AI/ML



## Consulting Services

- Energy Management Consultancy
- Project Management Consultancy
- BIM Management Consultancy
- Water Management Consultancy

# Geospatial: Equipment & Technology Used

## Via Tech Lidar Technology

Digital Video Recorder  
Asset & Pavement View Cameras



Global Positioning System



Aerial LiDAR Mapping



3D Road Geometry Maps

ViaPPS : POS LV from Applanix



ViaPhoto360 specifications



Front Laser Mounting Beam along with Side Projection lasers

- Enables full Traverse Profiles

# Geospatial : Featured Offerings for Smart Cities

## Smart Connectivity

- Transport**
  - Traffic Planning
  - DPR
  - Road Asset Management
  - Digital Twin
- Telecom**
  - 5G Network Modeling
  - Integrated 3D Models
  - Digital Twin
  - Utility Dashboards



## Urban Planning

- City Development Plan
- BIM
- Digital Twin
- Master Plan



## Energy Management

- Network Planning
- 3D Line Maps
- ODI
- IoT
- Street furniture & Vegetation Management



## Water Management

- Water Infrastructure Management
- Non-Revenue Water Management
- Water Quality Management
- IoT



## E-Governance

- Cadastral Data management-Parcel Modernization
- Fleet Management
- Municipal/City GIS
- Natural Resources Management



## Disaster Management

- Emergency Planning
- Emergency Response
- Recovery Support
- Hazard Mitigation Planning



GIS & Engineering Surveys | Data acquisition, Modelling & Simulation | Base Maps | Scan to Model | Image Interpretation and classification

Structural design & Strategic Planning| As-Built Mapping | Corridor Design & Network Modelling & Mapping | Asset Management | Vehicle Tracking System | Decision Support System

Network Modeling| Road Asset Management | Pavement, corridor & Bridge Management | Asset monetization

Comprehensive Development Plan

D/O MS implementation | DR & Roll-up | Operational Data Infrastructure| Grid Automation

Hydraulic Modelling | PMC| Water Audit

Data model & development| E-integration | Change Detection| Enterprise Security| DC-DR|Geoportal

Risk Analytics | Change Management | ImpactAnalytics

Digital Project Management System | SCADA | IoT Based Command Control Center | Capacity Planning | Facility Management System

Customized web-based Enterprise Solutions

Partners



SIEMENS

Platforms





# Technology Solutions



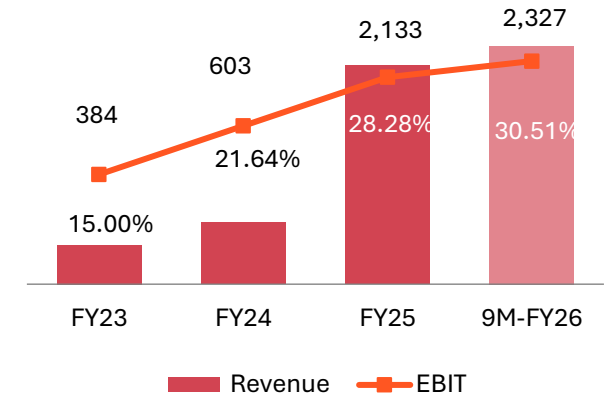
# Technology Solutions Overview

## Technology Solutions include IoT, Products and Platform Services, Manufacturing solutions and DATA

CS TECH Ai has developed and adapted to various tech solutions including IoT that merges live sensor feeds with project data for a 360° view of operations, risk, and progress. The company also provides various tech solutions on the Tech platforms of Autodesk, Bentley, Esri, Aviva and others. It has also tied up with various technology partners for providing manufacturing solutions and Data driven BI dashboarding and data mining and processing capabilities.

- **Smart-utility IoT suite** monitors water, powerlines, pipelines, and city assets in real time—leak detection, asset-health, and predictive maintenance—via edge sensors, SCADA links, and cloud dashboards.
- **Open, device-agnostic architecture** blends legacy SCADA with new LPWAN/LoRa nodes, streaming into WebGIS analytics for planners, operators, and mobile field crews.
- **Proven scale:** national NRW programs, and state-wide water networks already run on our IoT platform, reducing losses and boosting uptime.
- **Integrated Command Control Centre (ICCC)** – role-based dashboards, mobile alerts and real-time KPIs enable rapid decisions during routine ops or emergency events.
- **Digital Project Management System (DPMS)** creates a Common Data Environment that fuses 3D/4D/5D models, schedule, and cost—driving transparency on megaprojects
- **Core DPMS modules** – analytical dashboards, resource & asset management, PMIS, and LiDAR-based corridor mapping – shorten decision cycles and cut rework across infrastructure and transport builds.
- **Continuous R&D in AI/ML & digital twins** along with immersive 4D/5D visualization keeps platforms evolving and tightly integrated for end-to-end lifecycle insight.

**Business Performance (Technology Solutions)**  
Operational Revenue (INR Mn) and EBIT Margins (%)



### Tech stack

IOT/IIOT implementation

### Technology Partner



Product & Platform Solutions



Data Engineering





# Mobility, Embedded and AI- ML



# Mobility : Industries covered



## Passenger Vehicles

- Interior Systems
- Complete Seat Systems
- Body Systems
- Exterior Systems



## Commercial Vehicles

- Cabin Interiors
- Seat Mechanisms and Structure
- Cabin Systems
- Vehicle Frames



## Off-Highway Vehicles

- Agricultural, Construction, Material-handling equipment
- Cabin Interiors Design
- Seating Systems
- BIW Cabin Structures
- Powertrain Mounting Systems



## Two/Three Wheelers

- Vehicle Body
- Vehicle Aggregates
- Electrical / Electronic Systems

# Mobility : Service offerings



## Styling

- Benchmarking
- Style Definitions
- Sketching
- Rendering
- Regulatory Compliance



## Concept Development

- Concept Definitions
- Engineering Feasibility
- Surface Development
- Ergonomic Checks
- Fixing Strategy



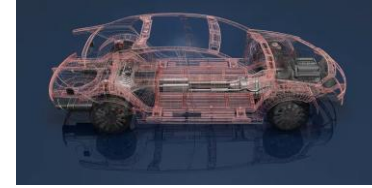
## Design & Validation

- Engineering Design
- GD&T Plan
- Virtual Validation
- Engineering Proto Release



## Manufacturing Engineering

- Tolerance Analysis
- Pre-Series Manufacturing
- Pre-Production Support
- Plant Layout
- Processing Studies
- Process Validation



## PLM

- Strategy
- Implementation
- Integration
- Migration



## Industrial Automation

- Assembly Line Design
- Detailing
- BOM
- Build Support

# Mobility : Featured Offerings – End to End Product Development Solutions



**Benchmarking, Style Definitions, Sketching, Rendering, Document Regulatory Requirements**

**Concept Definitions, Engineering Feasibility Checks, A Surface Development, Ergonomic Checks**

**A Surface Check, Packaging Studies, DMU, Master and feasibility section creation, RPS Check, Fit Function Requirement Check**

**Engineering Design (DFM, DFA, DFS checks), GD&T Plan , Virtual Validation, Engineering Proto Release**

**Design Modifications, CAD Modelling, Re-Validation, Tooling Release**

**Pre-Series Manufacturing, Pre-Production Support**

**Plant Layout, Processing and Cycle Time Studies, Process Validation**

**Assembly Line Design and Simulation, Detailing, BoM, Build and Installation Support**

# Emerging Tech : Featured Offering: AI/ML based platform\*

## The Process



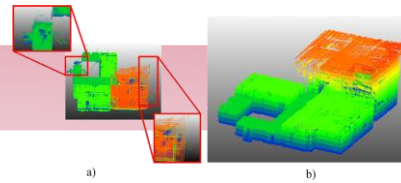
### Point Cloud Upload

Upload and manage scan data



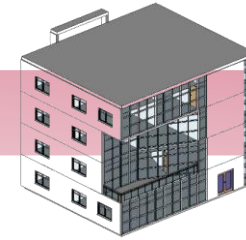
### Validation

Ensure accuracy and quality



### Automated Processing

Clean and prepare point clouds



### BIM Generation

Convert to 3D building models



### Deliverables

Digital Twin

## Targeted Industry Segments



GIS- Road, Telecom



ACE/BIM



AEC-MEP



Medical



Gaming



Other Industrial

\*Note – All Images are representative \* Platform Under Development



# Strategic Overview

# Go To Market Approach



## Market Penetration Plans ▼

- INDIA:
  - Expand Empanelment for tapping various opportunities under different Government schemes
  - Infra & Mobility sector partnerships
- INTERNATIONAL:
  - Strategic alliances in MEA, ASEAN
  - GIS consulting firms as channel partners
  - Initiating to set up presence in Saudi and Dubai



## Leverage specific Government Initiatives: ▼

- Jal Jeevan Mission receives continued government funding and has been extended till 2028 to achieve 100% rural water coverage.
- National Geospatial Mission to build core geospatial infrastructure and datasets.
- Government push to modernize land records, urban planning, and infrastructure design.
- Lot of Captive Initiatives for application of AI- ML for development of Products, Solutions and enhancing efficiency of operations. The captive data for various projects enable tech enabled initiatives
- India targets 340 GW of renewable capacity by 2030, driving demand in water and clean energy sectors.



## Key Acquisitions to support future growth: ▼

- Investing in emerging tech—AI solutions and embedded electronics—to fuel future growth
- Build technical and strategic partnership with Domain experts
- Business acquisition of VTS in USA established our presence in the US geospatial -telecom sector and enhanced overall presence in Geospatial domain in USA.
- Additional acquisitions planned across Geospatial, Mobility, and Tech domains.
- Driving excellence through initiatives in embedded technology to cater to Mobility and other strategic sectors



# Financial Overview

# Historical Consolidated Financial Performance

PARTICULARS (INR Mn)	FY23	FY24	FY25	9M-FY26
<b>Operational Revenue</b>	<b>2,195</b>	<b>2,529</b>	<b>4,181</b>	<b>4,900</b>
Total Expenses	1,878	2,089	3,402	3,842
<b>EBITDA</b>	<b>317</b>	<b>440</b>	<b>779</b>	<b>1,058</b>
<b>EBITDA Margins (%)</b>	<b>14.44%</b>	<b>17.40%</b>	<b>18.63%</b>	<b>21.59%</b>
Other Income	24	36	117	136
Depreciation	45	52	82	87
Finance Cost	84	47	25	41
<b>Profit Before Share of Profit of joint Venture &amp; Tax</b>	<b>212</b>	<b>377</b>	<b>789</b>	<b>1,066</b>
Share in Profit of joint Venture	77	118	106	89
<b>PBT (Before Exceptional items)</b>	<b>289</b>	<b>495</b>	<b>895</b>	<b>1,155</b>
Exceptional items	-	-	-	12
<b>PBT (After Exceptional items )</b>	<b>289</b>	<b>495</b>	<b>895</b>	<b>1,143</b>
Tax	(20)	147	263	180
<b>PAT</b>	<b>309</b>	<b>348</b>	<b>632</b>	<b>963</b>
<b>PAT Margins (%)</b>	<b>14.08%</b>	<b>13.76%</b>	<b>15.12%</b>	<b>19.65%</b>
Other Comprehensive Income	19	3	4	1
<b>Total Comprehensive Income</b>	<b>328</b>	<b>351</b>	<b>636</b>	<b>964</b>
Diluted EPS (INR)	20.02	22.52	35.27	48.76

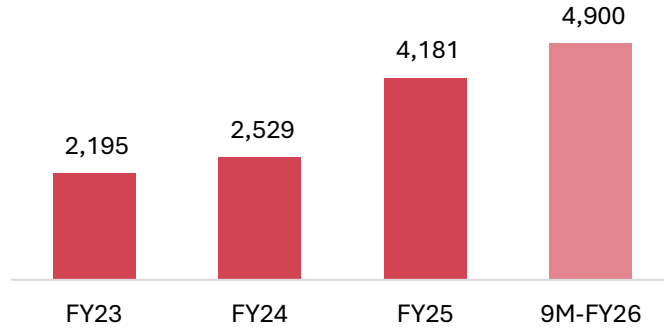
# Historical Consolidated Balance Sheet

PARTICULARS (INR Mn)	FY24	FY25	H1-FY26
<b>Assets</b>			
<b>(1) Non-current Assets</b>			
(A) Property, Plant And Equipment	238	447	490
(B) Capital Work-in-Progress	-	8	-
(C) Investment Property	-	8	8
(D) Goodwill	200	262	264
(E) Other Intangible Assets	1	83	79
(F) Other Intangible Under Development	-	21	61
(G) Financial Assets			
(i) Investments	267	220	164
(ii) Trade Receivables	31	25	14
(iii) Other Financial Assets	22	78	174
(H) Non-current Tax Assets (Net)	85	-	-
(I) Deferred Tax Assets (Net)	107	155	175
(J) Other Non-current Assets	19	13	13
<b>Total Non-current Assets</b>	<b>970</b>	<b>1,320</b>	<b>1,442</b>
<b>(2) Current Assets</b>			
(A) Inventories	6	5	8
(B) Financial Assets			
(i) Investments	170	-	-
(ii) Trade Receivables	1,666	2,533	4,192
(ii) Cash And Cash Equivalentents	111	125	55
(iii) Bank Balances Other Than (ii) above	180	1,499	1,467
(iv) Loans	-	-	-
(v) Other Financial Assets	33	55	40
(C) Current Tax Assets (Net)	57	76	14
(D) Other Current Assets	65	164	167
<b>Total Current Assets</b>	<b>2,289</b>	<b>4,457</b>	<b>5,943</b>
<b>Assets held for sale</b>	<b>2</b>	<b>-</b>	<b>-</b>
<b>Total Assets (1+2)</b>	<b>3,261</b>	<b>5,777</b>	<b>7,385</b>

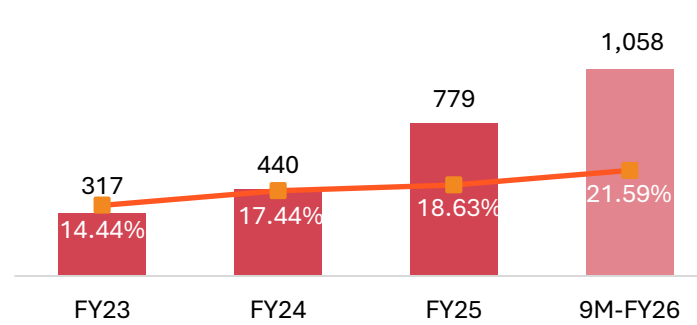
PARTICULARS (INR Mn)	FY24	FY25	H1-FY26
<b>Equity And Liabilities</b>			
<b>(1) Equity</b>	<b>2,341</b>	<b>4,119</b>	<b>4,667</b>
(A) Equity Share Capital	163	175	178
(B) Other Equity	2,178	3,944	4,489
(C) Non-Controlling Interest	-	-	-
<b>(2) Non-current Liabilities</b>			
(A) Financial Liabilities			
(i) Borrowings	8	8	35
(ii) Lease Liabilities	24	55	86
(B) Provisions	10	13	13
<b>Total Non-current Liabilities</b>	<b>42</b>	<b>76</b>	<b>134</b>
<b>(3) Current Liabilities</b>			
(A) Financial Liabilities			
(i) Borrowings	39	399	607
(ii) Lease Liabilities	20	30	26
(iii) Trade Payables	505	747	1,326
(iv) Other Financial Liabilities	116	160	207
(B) Provisions	29	44	52
(C) Current Tax Liabilities (Net)	2	158	294
(D) Other Current Liabilities	167	44	72
<b>Total Current Liabilities</b>	<b>878</b>	<b>1,582</b>	<b>2,584</b>
<b>Total Equity And Liabilities (1+2+3)</b>	<b>3,261</b>	<b>5,777</b>	<b>7,385</b>

# Consolidated Financial Performance

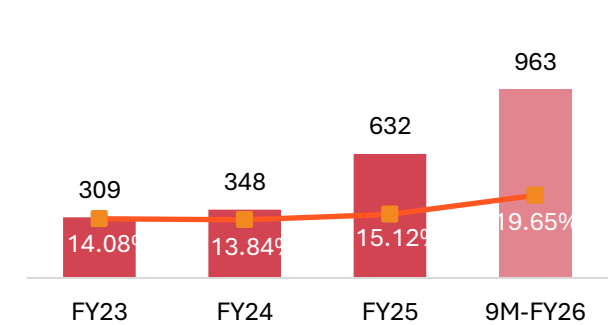
REVENUES (INR Mn)



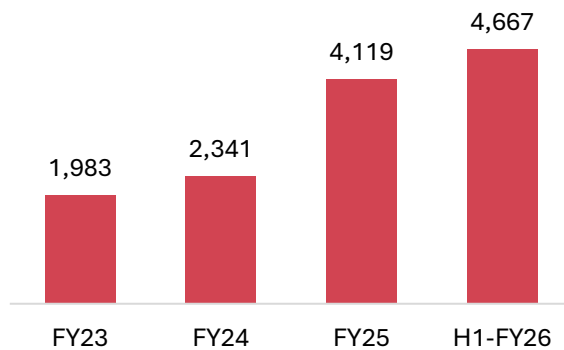
EBITDA (INR Mn) & EBITDA MARGINS (%)



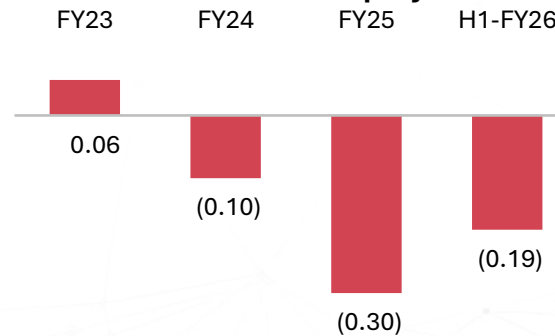
PAT (INR Mn) & PAT MARGINS (%)



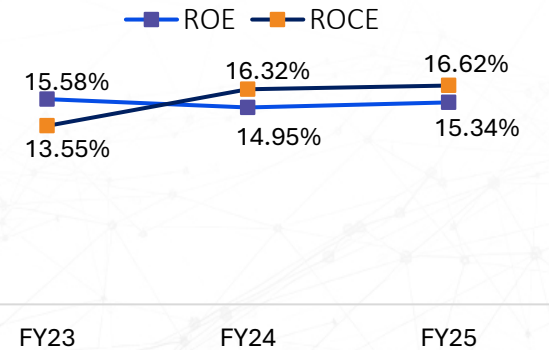
Net worth (INR Mn)



Net Debt to Equity



ROCE & ROE (%)



# Recent Corporate & Market Developments



## NOW ALSO LISTED ON NSE

Further broadening investor access, liquidity, and market visibility, with trading on NSE under the symbol CEINSYS from 19 February 2026.



## WARRANT CONVERSION COMPLETED

All outstanding warrants have been converted into equity shares, with the full balance consideration received.



## CAPITAL BASE STRENGTHENED

Paid-up equity capital increased from ₹17.84 crore to ₹20.94 crore following the conversion. With the receipt of the balance amount towards warrants, the company now has Investible surplus of Rs. 235 cr.



## EXPANDING MARKET VISIBILITY

Capital-market visibility is supported through external institutional engagement, including Aditya Birla Money, Arihant Capital, and Exencial Research Partners.

# Recent Developments



## JJM EXTENDED TO 2028

Jal Jeevan Mission 2.0 has been extended till December 2028 with enhanced outlay, supporting long-term opportunity in the water segment.

**The Union Cabinet has approved the extension of the Jal Jeevan Mission (JJM) 2.0 until December 2028, with an enhanced total outlay of ₹8.69 lakh crore, focusing on sustainable rural tap water supply. The scheme will shift focus from infrastructure creation to service delivery and functionality, with key MoUs signed with states like Uttar Pradesh and Madhya Pradesh for reform-linked implementation.**

### Key updates include:

**Mission Extension and Budget:** The Cabinet approved JJM 2.0 with a new deadline of Dec 2028. Total financial outlay reaches ₹8.69 lakh crore.

**Target Coverage:** The goal remains to cover 100% of rural households with potable water, with current coverage at approximately 81%.

**Focus on Sustainability (JJM 2.0):** The initiative now emphasizes long-term sustainability, focusing on functional tap connections (FHTC) rather than just installation.

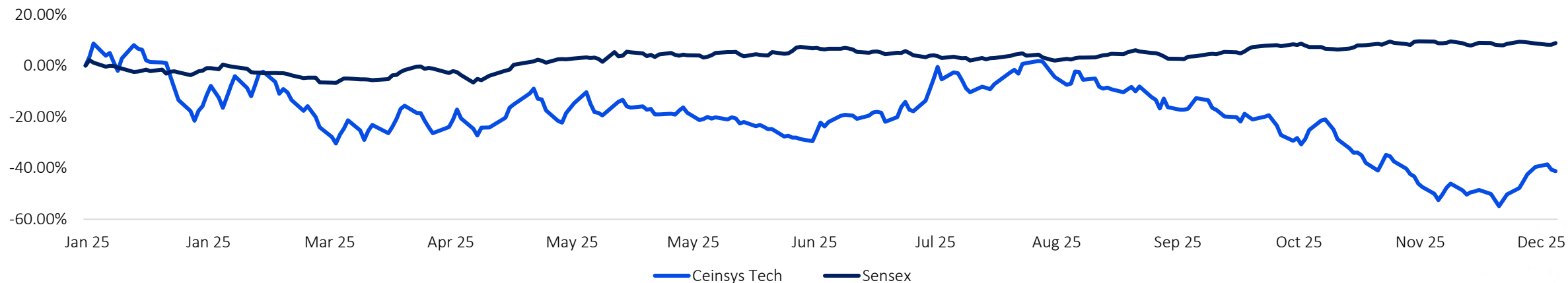
**Digital Governance:** A nationwide "Sujalam Bharat" digital framework will be implemented to monitor the drinking water infrastructure from source to tap.

**Community Ownership:** Increased role for Gram Panchayats in operating, maintaining, and certifying the "Har Ghar Jal" status.

**State-wise MoUs:** Uttar Pradesh, Madhya Pradesh, and other states are signing Memorandums of Understanding (MoUs) with the Center for implementing these new reforms

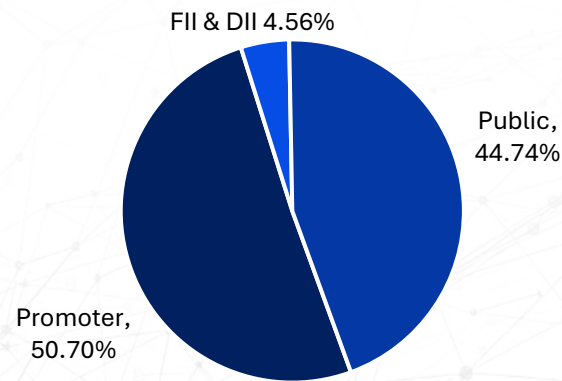
# Capital Market Information

1 Year Stock Performance up to 31<sup>st</sup> December, 2025



Price Data (As On 31 <sup>st</sup> December, 2025)	INR
Face Value	10.0
CMP	1,088.5
52 Week H/L	2,105.0/796.8
Market Cap (INR Mn)	19,419.2
Shares O/S (Mn)	17.8
Avg. Vol. ('000)	60.2
Number of Shareholders other than Promoter	27,318

Shareholding Pattern (As on 31<sup>st</sup> December, 2025)



# Disclaimer

## Ceinsys Tech Limited

*No representation or warranty, express or implied, is made as to, and no reliance should be placed on, the fairness, accuracy, completeness or correctness of the information or opinions contained in this presentation. Such information and opinions are in all events not current after the date of this presentation. Certain statements made in this presentation may not be based on historical information or facts and may be "forward looking statements" based on the currently held beliefs and assumptions of the management Ceinsys Tech Limited ("Company"), which are expressed in good faith and in their opinion reasonable, including those relating to the Company's general business plans and strategy, its future financial condition and growth prospects and future developments in its industry and its competitive and regulatory environment.*

*Forward-looking statements involve known and unknown risks, uncertainties and other factors, which may cause the actual results, financial condition, performance or achievements of the Company or industry results to differ materially from the results, financial condition, performance or achievements expressed or implied by such forward-looking statements, including future changes or developments in the Company's business, its competitive environment and political, economic, legal and social conditions. Further, past performance is not necessarily indicative of future results. Given these risks, uncertainties and other factors, viewers of this presentation are cautioned not to place undue reliance on these forward-looking statements. The Company disclaims any obligation to update these forward-looking statements to reflect future events or developments.*

*This presentation is for general information purposes only, without regard to any specific objectives, financial situations or informational needs of any particular person. This presentation does not constitute an offer or invitation to purchase or subscribe for any securities in any jurisdiction, including the United States. No part of it should form the basis of or be relied upon in connection with any investment decision or any contract or commitment to purchase or subscribe for any securities. None of our securities may be offered or sold in the United States, without registration under the U.S. Securities Act of 1933, as amended, or pursuant to an exemption from registration there from.*

*This presentation is confidential and may not be copied or disseminated, in whole or in part, and in any manner.*

## Valorem Advisors Disclaimer:

*Valorem Advisors is an Independent Investor Relations Management Service company. This Presentation has been prepared by Valorem Advisors based on information and data which the Company considers reliable, but Valorem Advisors and the Company makes no representation or warranty, express or implied, whatsoever, and no reliance shall be placed on, the truth, accuracy, completeness, fairness and reasonableness of the contents of this Presentation. This Presentation may not be all inclusive and may not contain all of the information that you may consider material. Any liability in respect of the contents of, or any omission from, this Presentation is expressly excluded.*

*Valorem Advisors also hereby certifies that the directors or employees of Valorem Advisors do not own any stock in personal or company capacity of the Company under review.*



VALOREM ADVISORS

"Your Partners in Value Creation"

For further details please contact our Investor Relations Representatives:

VALOREM ADVISORS

Mr. Anuj Sonpal

Tel: +91-22-49039500

Email: [ceinsys@valoremadvisors.com](mailto:ceinsys@valoremadvisors.com)

Investor Kit link: <https://valoremadvisors.com/ceinsys>



# Thank You

**Global**

USA, UK, Germany

---

**India**

Mumbai, Pune, Nagpur, Hyderabad,  
Bengaluru, Lucknow, Delhi, Chennai

