

Kovilpatti Lakshmi Roller Flour Mills Limited

Regd.Office & Flour Mill
75/8, Benares Cape Road
Gangaikondan – 627352
Tirunelveli District

Tamil Nadu

CIN : L15314TN1961PLC004674

Phone:+91 462 248 6532 (4 Lines)

Mobile:+ 91 944 337 5445

Fax : +91 462 248 6132

E-Mail: ho@klrf.in

Web : www.klrf.in

GSTN : 33AAACK6029N1ZF

REF/BSE/2025-26/

11th November 2025

BSE Limited

BSE's Corporate Relationship Department

First Floor, New Trading Ring

Rotunda Building, P. J. Towers

Dalal Street, Mumbai – 400001.

Dear Sir/Madam,

Scrip Code: 507598

Sub : Submission of presentation prepared for Q2 FY 2025-26 under Regulation 30 of SEBI (Listing Obligations and Disclosure Requirements) Regulations, 2015 (“Listing Regulations”)

Pursuant to Regulation 30 of the SEBI (Listing Obligations and Disclosure Requirements) Regulations, 2015 (“Listing Regulations”), we hereby voluntarily submit the presentation prepared by the Company for Q2 FY 2025-26 for the general information of all the shareholders. The said presentation is also available on the Company's website www.klrf.in.

We would like to inform you that the above presentation is being submitted voluntarily for wider dissemination of information to the shareholders and no analysts or investors meeting, earnings call, conference call, group meetings or any other discussion or interaction with any investor is proposed to be conducted in connection with the above presentation.

This is for your information and record.

Thanking you,

Yours faithfully,

For Kovilpatti Lakshmi Roller Flour Mills Limited

S.Piramuthu

Company Secretary and Compliance Officer

Membership No: FCS 9142

Kovilpatti Lakshmi Roller Flour Mills Limited

Investor Presentation

Company Profile

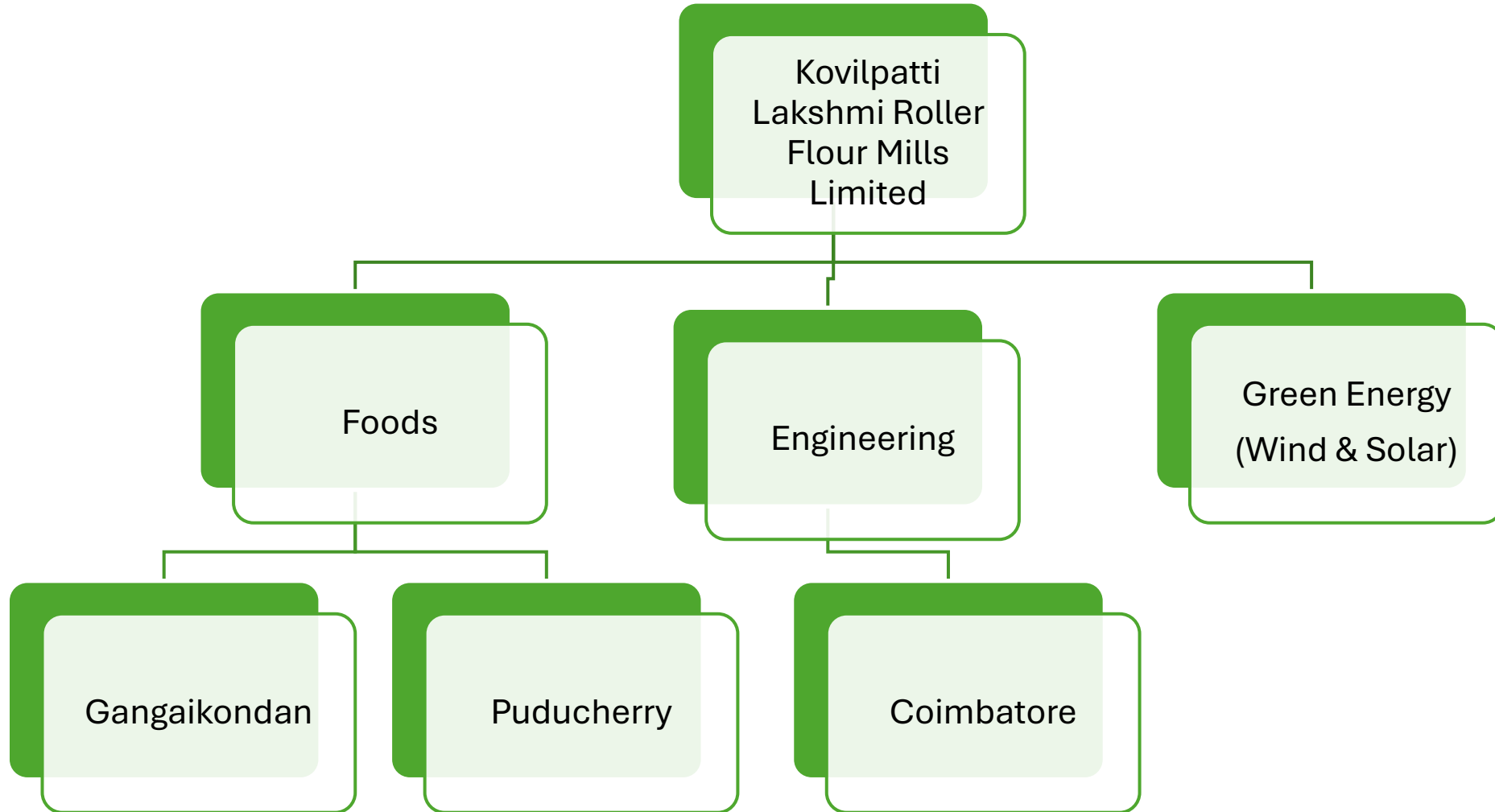
Since
1964

Kovilpatti Lakshmi
Roller Flour Mills
Limited.

Diverse
Business

We started as a
flourmill and
expanded into Iron
casting, Sheet metal
fabrication ,
Renewable energy.

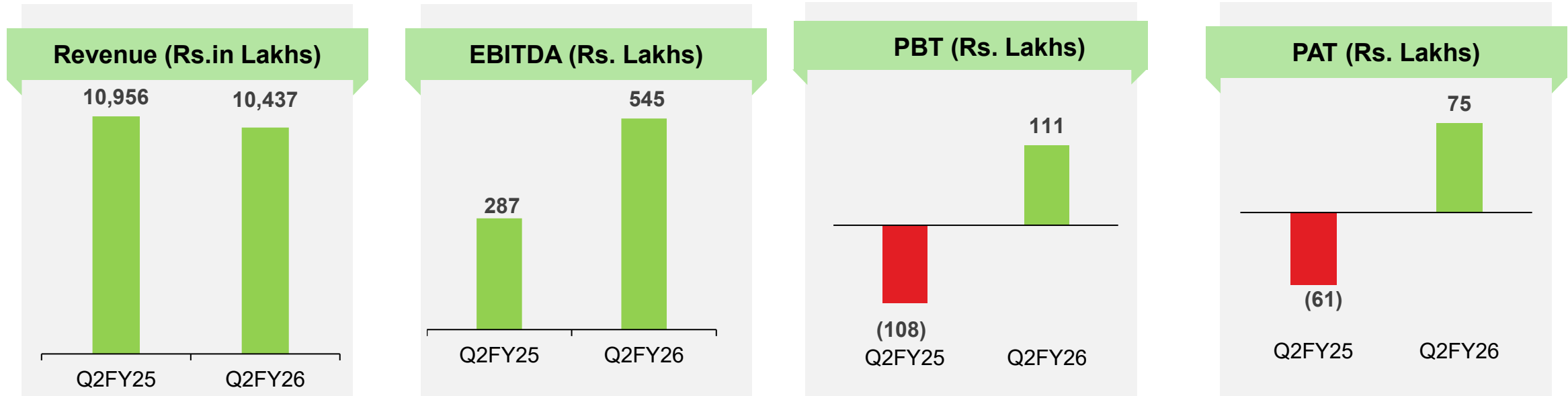
Company Overview



Our Values



Q2 FY26 Financial Highlights



- Total Income (Net) during Q2 FY26 stood at Rs. 10,437 lakhs, as against Rs. 10,956 lakhs in Q2 FY25.
- EBITDA during Q2 FY26 stood at Rs. 545 lakhs, as against Rs. 287 lakhs in Q2 FY25.
- PBT increased to Rs. 111 lakhs in Q2 FY26, as against loss of Rs. 108 Lakhs in Q2 FY25.
- PAT stood at Rs. 75 Lakhs in Q2 FY26, as against loss of Rs. 61 Lakhs in Q2 FY25.

Q2 FY26- Abridged Profit & Loss Statment

Particulars (Rs. In Lakhs)	Q2 FY 26	Q2 FY 25	
Total Revenue	10,437	10,956	Revenue decreased by 4.7%.
-Revenue from Operations	10,385	10,904	
-Other Income	52	52	
Material Cost	7,595	8,512	Gross Margin improved.
-Cost of Materials Consumed	7,548	8,519	
-Purchase of Traded Goods	69	115	
-Changes in Inventories of Finished Goods	-22	-122	Increased due to arrears and one-time settlements.
Gross Profit	2,841	2,444	
Gross Margin %	27.4%	22.4%	
-Employee Benefits Expense	715	497	EBIDTA margin improved.
-Other Expenses	1,581	1,661	
EBITDA	545	287	
EBITDA Margin %	5.2%	2.6%	
-Depreciation and Amortisation Expense	181	167	
-Finance Costs	253	227	
Profit Before Tax	111	-108	
PBT Margin %	1.1%	-1.0%	

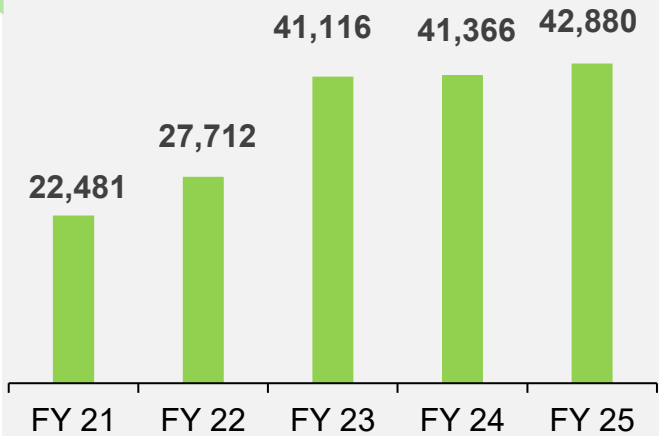
Segment wise Revenue



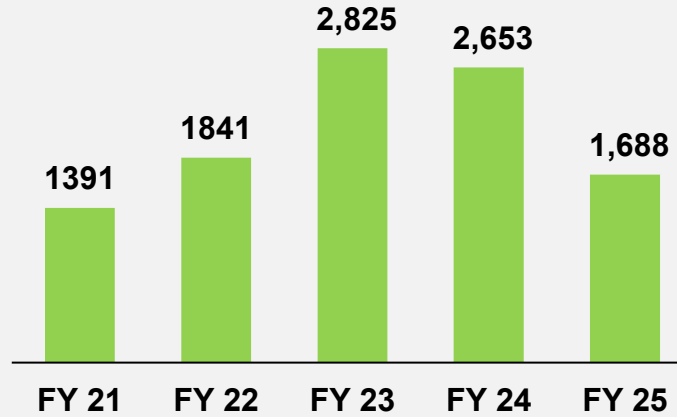
Particulars (Rs. Lakhs)	Q2FY25	Q2FY26	YoY Growth
Food Division	8,514	7,772	-8.72%
Engineering Division	2,443	2,665	9.09%
Total	10,957	10,437	-4.75%

Key Financials

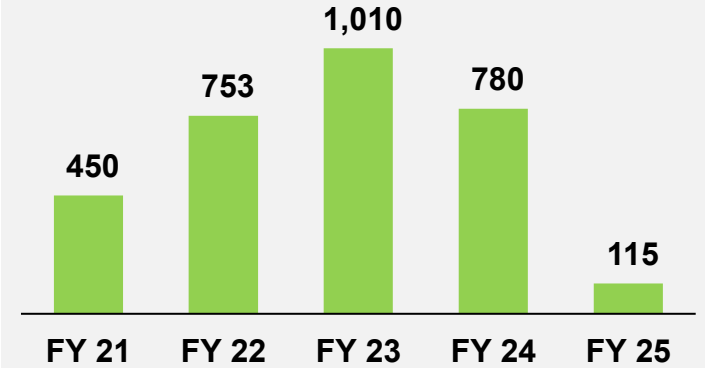
Total Income (Rs. In Lakhs)



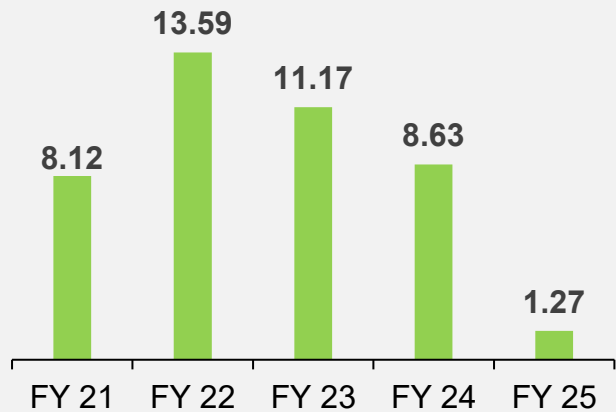
EBITDA (Rs. Lakhs)



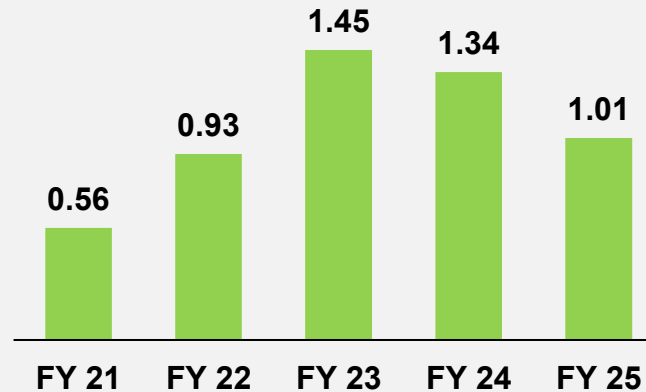
PAT (Rs. Lakhs)



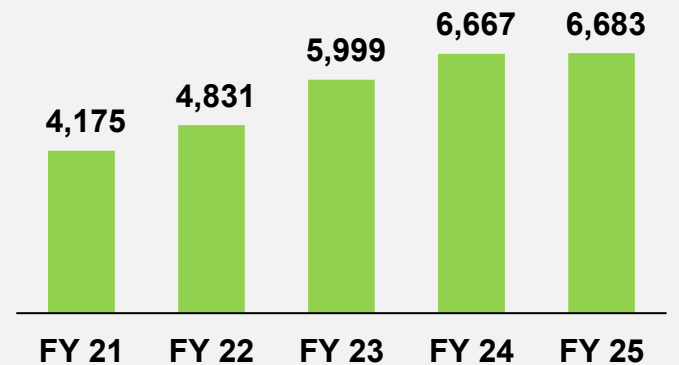
EPS (In Rs.)



Debt Equity Ratio



Net worth (Rs. Lakhs)



Historical Profit/Loss

Particulars (Rs. Lakhs)	FY21	FY22	FY23	FY24	FY25
Total Income	22,481	27,712	41,116	41,366	42,880
- Revenue from Operations	22,392	27,335	40,541	41,091	42,659
- Other Income	89	377	575	275	221
Material Cost	15,710	18,929	29,948	30,633	32,753
- Cost of Materials Consumed	15,410	18,750	29,272	29,565	31,768
- Purchases of Stock-in-Trade	218	288	525	1,070	1,167
- Changes in Inventories	82	-109	152	-2	-182
Gross Profit	6,771	8,783	11,168	10,733	10,127
<i>Gross Margin (%)</i>	30.1%	31.7%	27.2%	25.9%	23.6%
Employee Expenses	1,305	1,423	1,916	1,865	1,850
Other Expenses	4,076	5,519	6,427	6,215	6,589
EBITDA	1,390	1,841	2,825	2,653	1,688
<i>EBITDA Margin (%)</i>	6.2%	6.6%	6.9%	6.4%	3.9%
Depreciation	341	401	631	643	680
Finance Cost	422	406	775	959	854
Profit Before Tax	627	1,034	1,419	1,051	154

Balance Sheet Trends

Particulars (Rs. In Lakhs)		FY 21	FY 22	FY 23	FY 24	FY 25
ASSETS						
Non-Current Assets		2,816	5,439	8,321	8,586	8,674
	Property, Plant and Equipment	2,634	5,119	7,704	7,770	8,151
	Intangible Assets	15	11	9	6	3
	Capital work in Progress	3	50	62	258	22
	Intangible Assets under Development			9	7	136
	Financial assets					
	Investments	46	46	45	0	0
	Other Financial Assets	117	206	355	289	245
	Other Non-Current Assets	1	8	137	257	116
Current Assets		6,085	6,909	8,712	9,275	8,082
	Inventories	4,075	4,718	6,466	7,325	5,172
	Financial assets					
	Trade Receivables	1,573	1,630	1,771	1,519	2,264
	Cash and Cash Equivalents	18	21	14	11	20
	Bank Balances other than above	1	3	4	6	6
	Other Current Assets	418	538	457	415	621
Total Assets		8,901	12,348	17,034	17,862	16,757

Balance Sheet Trends

Particulars (Rs. In Lakhs)		FY 21	FY 22	FY 23	FY 24	FY 25
EQUITY AND LIABILITIES						
Share Holders Funds		4,175	4,831	5,999	6,667	6,683
Non-Current Liabilities (NCL)		907	2,686	5,767	5,125	4,217
	Financial liabilities					
	-Borrowings	682	2,367	5,312	4,628	3,723
Deferred Tax Liabilities (Net)		225	318	455	496	494
Current Liabilities		3,818	4,831	5,267	6,070	5,857
	Financial Liabilities					
	-Borrowings	1,861	2,139	3,399	4,321	3,014
	-Trade Payables					
	- Dues to Micro and Small Enterprises	358	315	293	315	303
	- Dues to Others	951	975	787	692	2,150
	Short Term Provisions	202	181	248	229	49
	Other Current Liabilities	446	1,221	540	512	341
Total Equity and Liabilities		8,901	12,348	17,034	17,862	16,757

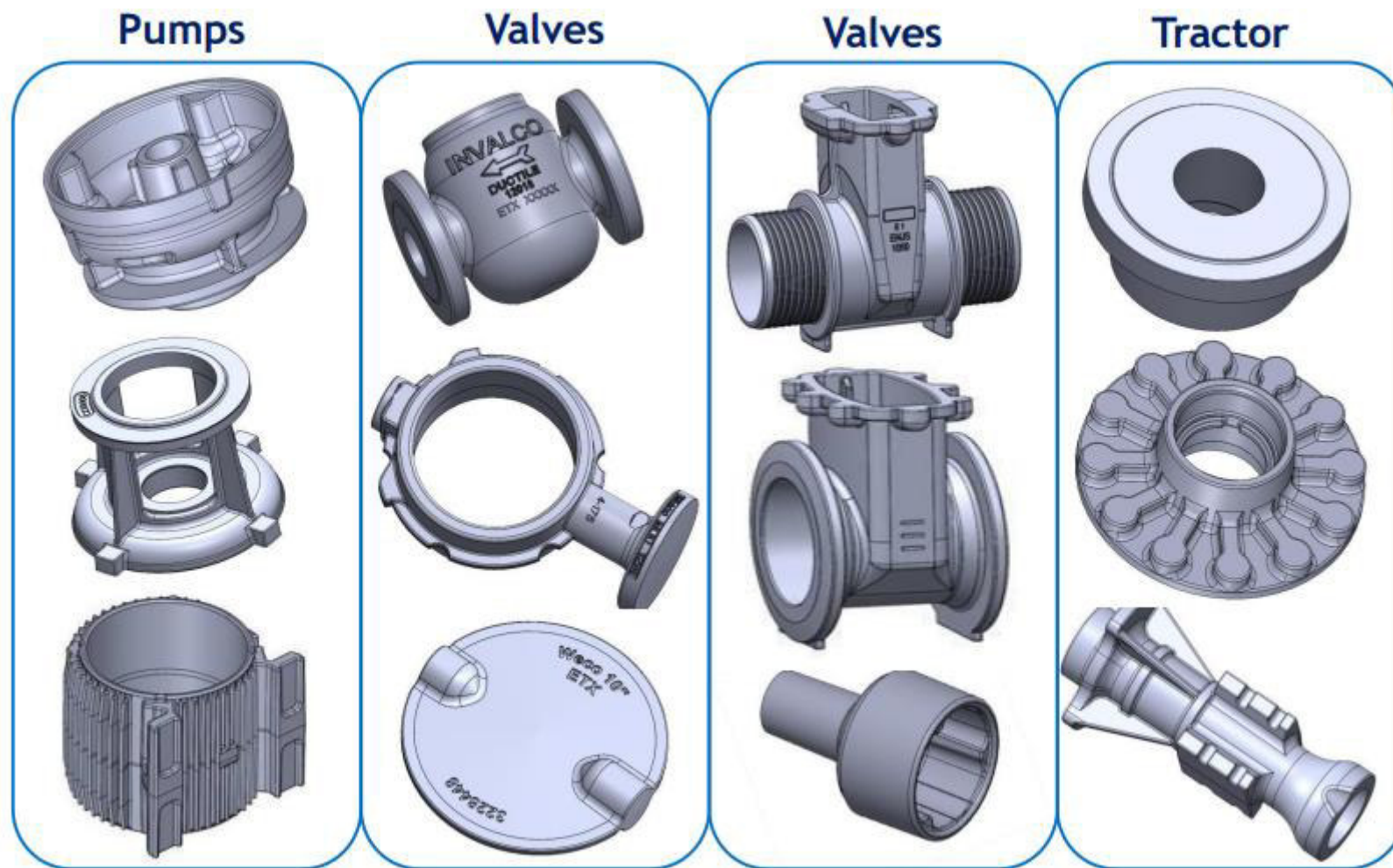
Our Products-Foods



Our Products-Foods

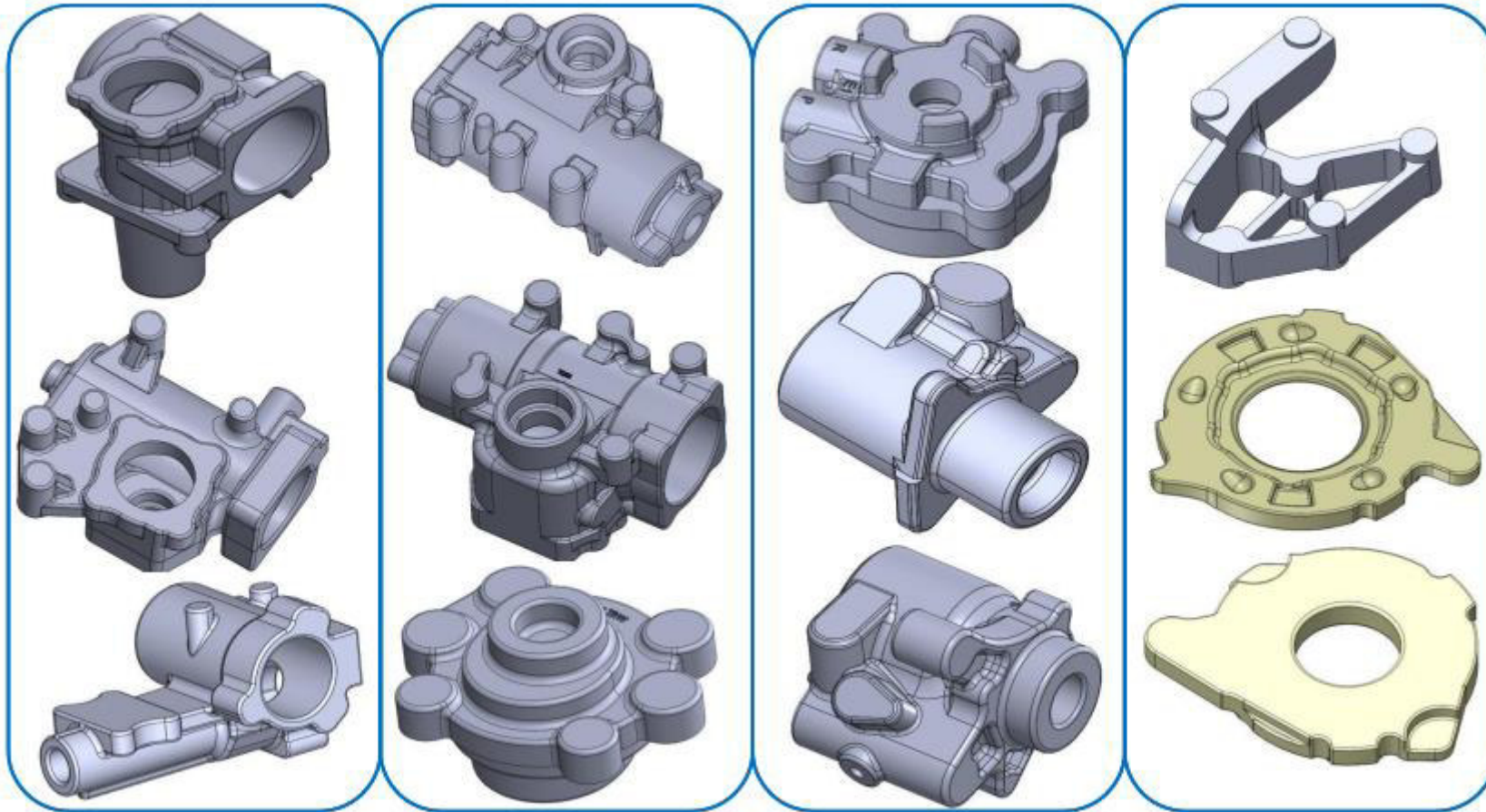


Our Products-Engineering



Our Products-Engineering

Automotive & Hydraulics - Steering Housings, Valve Housing, Pump Housing, Side Cover & Mounting Bracket



Our Customers



Automotive



Farm Equipment



Machine Tool



Pumps



Valves



Textiles

